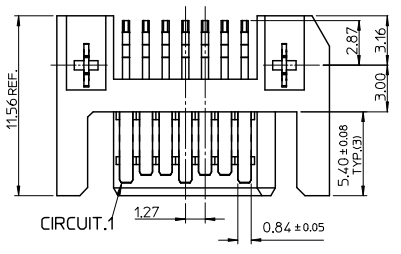
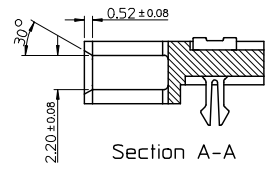


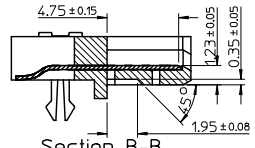
P/N	CONTACT AREA PLATING	REMARK	PACKAGE
67490-3220	GOLD FLASH	PURE TIN	PK-67490-001 (TRAY)
67490-3221	0.76 MICRONS GOLD PLATED		
67490-3225	0.38 MICRONS GOLD PLATED	PURE TIN	PK-67490-005 (TAPE&REEL)
67490-3230	GOLD FLASH		
67490-3231	0.76 MICRONS GOLD PLATED		
67490-3235	0.38 MICRONS GOLD PLATED		



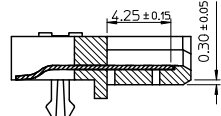
NOTES:  
 1. MATERIAL:  
 HOUSING: HIGH TEMPERATURE THERMAL PLASTIC  
 GLASS FILLED, UL94V-0, COLOR: BLACK  
 TERMINAL/FORKLOCK: COPPER ALLOY  
 MYLAR: ADHESIVE MYLAR 4.5MM X 15.5MM  
 2. TERMINAL PLATING:  
 CONTACT AREA: GOLD PLATED  
 SOLDERING TAIL: 1.27 MICRONS MINIMUM TIN PLATED  
 UNDER PLATE: NICKEL 1.27 MICRONS MINIMUM NICKEL PLATED  
 3. FORKLOCK PLATING:  
 1.27 MICRONS MINIMUM TIN PLATED OVERALL 1.27 MICRONS MINIMUM NICKEL PLATED  
 4. PACKAGING SPECIFICATION REFER TO PK-67490-00\*  
 5. PRODUCT SPECIFICATION REFER TO PS-67490-001  
 6. MATING PART: 67538,67489  
 7. PRODUCT COMPLIANT TO RoHS DIRECTIVE 2002/95/EC AND ELV 2000/53/EC.



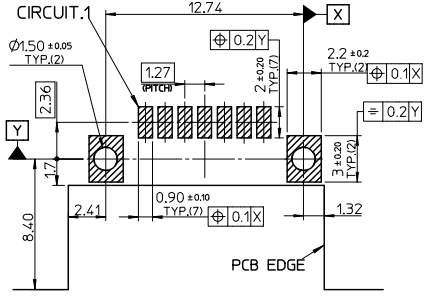
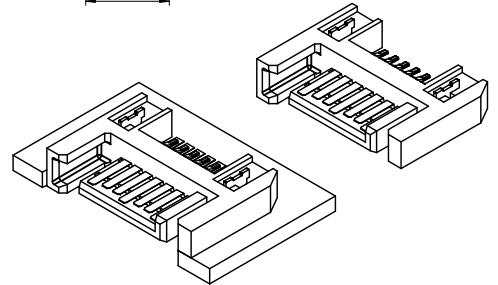
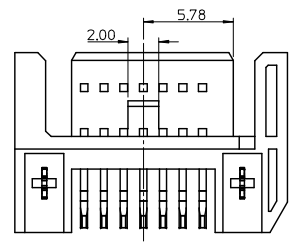
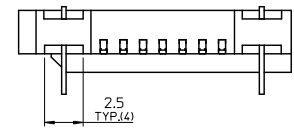
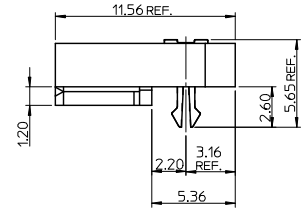
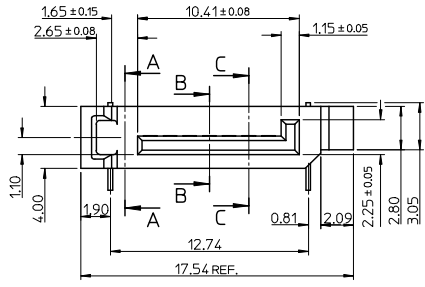
Section A-A



Section B-B



Section C-C



RECOMMEND PCB LAYOUT (t=1.6)

ADD PART NUMBER EC NO: SH2008-0665 DRAWN: SONG09 2008/08/07 CHECK: ISONG 2008/08/13 APPR: HMANG 2008/09/01 REV DESCRIPTION	QUALITY SYMBOLS	GENERAL TOLERANCES (UNLESS SPECIFIED)	DIMENSION STYLE	SCALE	DESIGN UNITS	THIRD ANGLE PROJECTION
	▽=0	mm INCH	MM ONLY	4:1	METRIC	
	▽=0	4 PLACES ± --- ± ---	DRAWN BY DATE	TITLE		
		3 PLACES ± --- ± ---	RICHARD '01/05/28	SATA SYSTEM PLUG R/A REVERSE TYPE		
	2 PLACES ± 0.15 ± ---	CHECKED BY DATE	MOLEX INCORPORATED			
	1 PLACE ± 0.25 ± ---	VINCENT '01/05/28	DOCUMENT NO.			
	ANGULAR ± 3°	APPROVED BY DATE	SD-67490-001			
		ERICK '01/05/28	SHEET NO.			
			1 OF 1			
			MATERIAL NO. SEE TABLE			
			SIZE A 3 THIS DRAWING CONTAINS INFORMATION THAT IS PROPRIETARY TO MOLEX INCORPORATED AND SHOULD NOT BE USED WITHOUT WRITTEN PERMISSION			