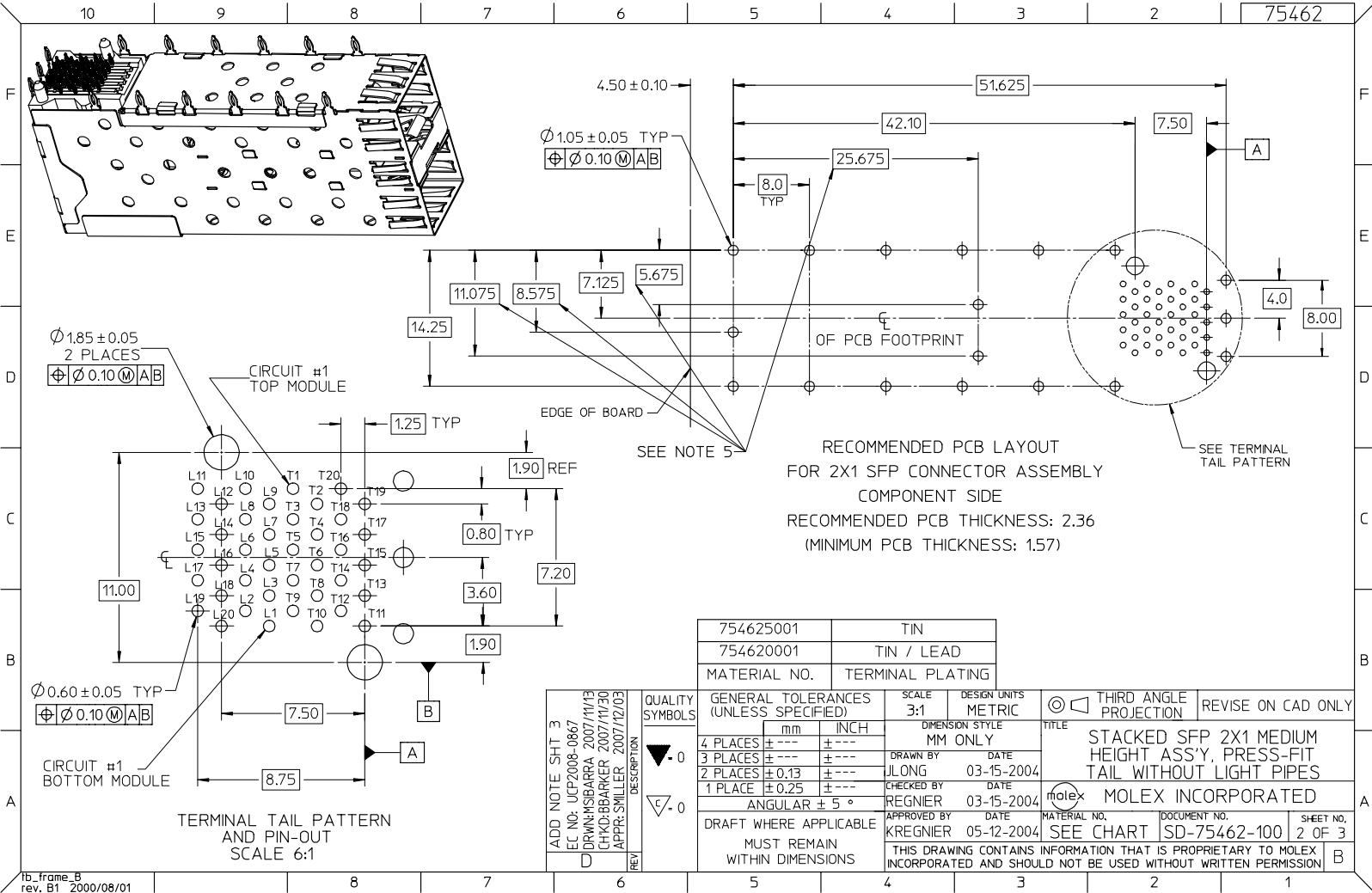


- NOTES:
1. MATERIAL:
 CAGE: NICKEL SILVER, THICKNESS: 0.25MM
 SFP HOUSING: GLASS FILLED HIGH TEMP PLASTIC.
 UL: 94 V-0, COLOR: BLACK
 OVER-MOLDED TERMINALS: GLASS FILLED HIGH TEMP PLASTIC.
 UL: 94 V-0, COLOR: BLACK
 TERMINALS: BRASS
 2. FINISH:
 TERMINALS:
 CONTACT AREA: 0.76 MICRONS MIN. HARD GOLD
 OVER 1.27 MICRONS MIN. NICKEL.
 COMPLIANT TAIL - TIN/LEAD OPTION: 0.76 - 152 MICRONS 90/10 TIN/LEAD
 OVER 0.76 - 152 MICRONS NICKEL.
 COMPLIANT TAIL - TIN OPTION: 0.76 - 152 MICRONS TIN
 OVER 0.76 - 152 MICRONS NICKEL.
 3. REFER TO PS-75310-001 FOR ALL ELECTRICAL,
 MECHANICAL AND ENVIRONMENTAL SPECIFICATIONS.
 4. REFER TO PK-75462-001 FOR ALL PACKAGING SPECIFICATIONS.
 5. THE CURVED TAILS THAT GO INTO THE HOLES LOCATED BY THESE DIMENSIONS
 ARE BEING ELIMINATED. TO ACCOMMODATE THIS CONVERSION, IT IS RECOMMENDED
 THAT BOARDS DESIGNED TO THIS PRINT REVISION INCLUDE THESE HOLES.

ADD NOTE SHT 3 EC NO: UCP2008-0867 DRWN:MSBARRA 2007/11/13 CHCK:BBARKER 2007/11/30 APPR:SMILLER 2007/12/03	QUALITY SYMBOLS	GENERAL TOLERANCES (UNLESS SPECIFIED)	SCALE 3:1	DESIGN UNITS METRIC	THIRD ANGLE PROJECTION	REVISE ON CAD ONLY															
	0 0	<table border="1"> <tr> <th></th> <th>mm</th> <th>INCH</th> </tr> <tr> <td>4 PLACES</td> <td>± ---</td> <td>± ---</td> </tr> <tr> <td>3 PLACES</td> <td>± ---</td> <td>± ---</td> </tr> <tr> <td>2 PLACES</td> <td>± 0.13</td> <td>± ---</td> </tr> <tr> <td>1 PLACE</td> <td>± 0.25</td> <td>± ---</td> </tr> </table>		mm	INCH	4 PLACES	± ---	± ---	3 PLACES	± ---	± ---	2 PLACES	± 0.13	± ---	1 PLACE	± 0.25	± ---	DIMENSION STYLE MM ONLY	TITLE	STACKED SFP 2X1 MEDIUM HEIGHT ASSY, PRESS-FIT TAIL WITHOUT LIGHT PIPES	
			mm	INCH																	
		4 PLACES	± ---	± ---																	
3 PLACES	± ---	± ---																			
2 PLACES	± 0.13	± ---																			
1 PLACE	± 0.25	± ---																			
DRAFT WHERE APPLICABLE MUST REMAIN WITHIN DIMENSIONS	DRAWN BY JLONG 03-15-2004 CHECKED BY REGNIER 03-15-2004 APPROVED BY KREGNIER 05-12-2004	MOLEX INCORPORATED SEE CHART SD-75462-100	SHEET NO. 1 OF 3 DOCUMENT NO. SD-75462-100																		
REV	THIS DRAWING CONTAINS INFORMATION THAT IS PROPRIETARY TO MOLEX INCORPORATED AND SHOULD NOT BE USED WITHOUT WRITTEN PERMISSION																				



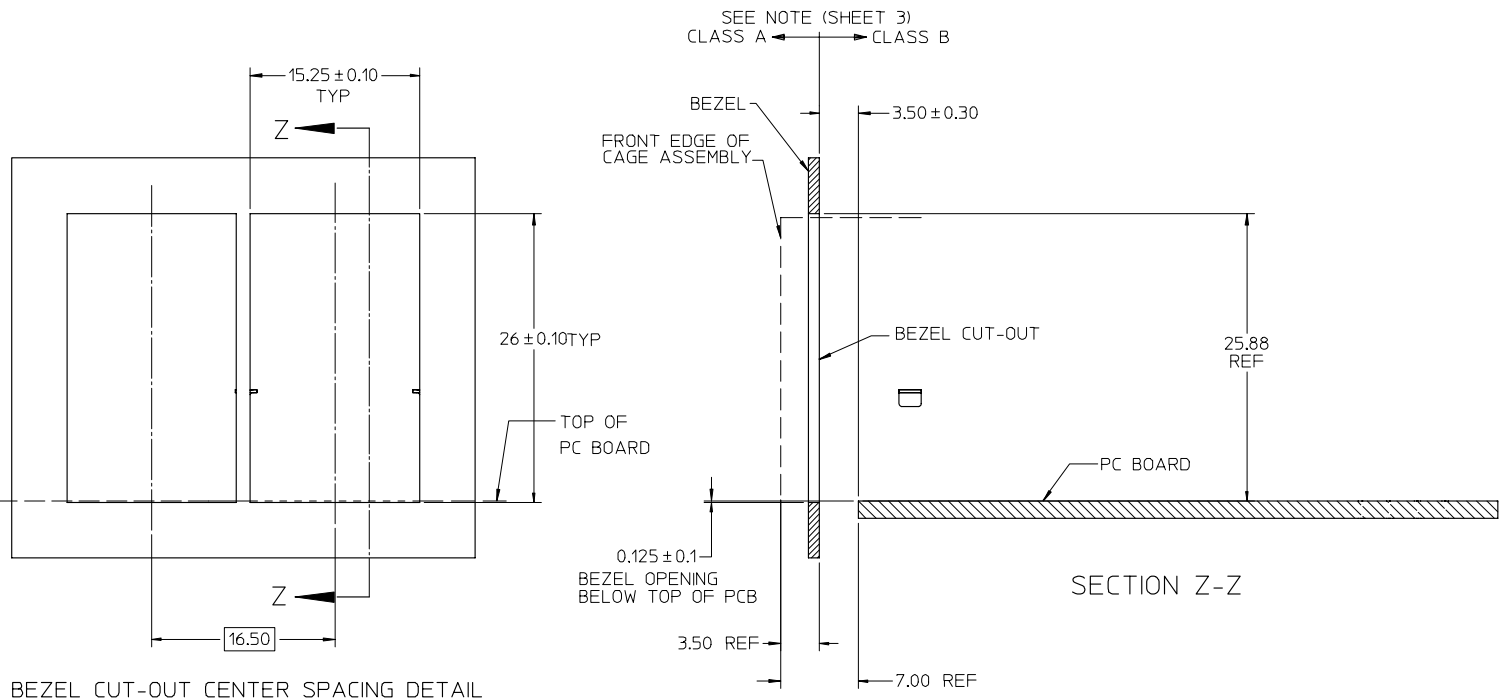
RECOMMENDED PCB LAYOUT
FOR 2X1 SFP CONNECTOR ASSEMBLY
COMPONENT SIDE
RECOMMENDED PCB THICKNESS: 2.36
(MINIMUM PCB THICKNESS: 1.57)

754625001	TIN
754620001	TIN / LEAD
MATERIAL NO.	TERMINAL PLATING

ADD NOTE SHT 3	DESCRIPTION
EC NO: UCP2008-0867	
DRWNS/BARRA 2007/11/13	
CHKD/BARKER 2007/11/30	
APPR. SMILLER 2007/12/03	
REV	DESCRIPTION
D	

QUALITY SYMBOLS	GENERAL TOLERANCES (UNLESS SPECIFIED)	SCALE 3:1	DESIGN UNITS METRIC	THIRD ANGLE PROJECTION	REVISE ON CAD ONLY
▽-0	4 PLACES ± --- ± ---	DIMENSION STYLE MM ONLY	TITLE	STACKED SFP 2X1 MEDIUM HEIGHT ASSY, PRESS-FIT TAIL WITHOUT LIGHT PIPES	
▽-0	3 PLACES ± --- ± ---	DRAWN BY JLONG	DATE 03-15-2004	MOLEX INCORPORATED	
	2 PLACES ± 0.13 ± ---	CHECKED BY REGNIER	DATE 03-15-2004	MATERIAL NO.	DOCUMENT NO.
	1 PLACE ± 0.25 ± ---	APPROVED BY KREGNIER	DATE 05-12-2004	SEE CHART SD-75462-100	SHEET NO. 2 OF 3
	ANGULAR ± 5 °	THIS DRAWING CONTAINS INFORMATION THAT IS PROPRIETARY TO MOLEX INCORPORATED AND SHOULD NOT BE USED WITHOUT WRITTEN PERMISSION			
	DRAFT WHERE APPLICABLE MUST REMAIN WITHIN DIMENSIONS				

TERMINAL TAIL PATTERN AND PIN-OUT SCALE 6:1



BEZEL CUT-OUT CENTER SPACING DETAIL
BEZEL THICKNESS 0.8 - 2.6

NOTE:
PART COMPLIES WITH COSMETIC SPECIFICATION PS-45499-002.
SEE SECTION Z-Z FOR SURFACE CLASSIFICATIONS.
UNDERSIDE OF CAGE COMPLIES WITH CLASS 'C'.

ADD NOTE EC NO: UCP2008-0867 DRWN:MSBARRA 2007/11/13 CHKD:BBARKER 2007/11/30 APPR:SMILLER 2007/12/03	QUALITY SYMBOLS	GENERAL TOLERANCES (UNLESS SPECIFIED)	SCALE 3:1	DESIGN UNITS METRIC	THIRD ANGLE PROJECTION	REVISE ON CAD ONLY
	▽ 0 ▽ 0	4 PLACES ± --- ± ---	mm INCH	DIMENSION STYLE MM ONLY		TITLE STACKED SFP 2X1 MEDIUM HEIGHT ASSY, PRESS-FIT TAIL WITHOUT LIGHT PIPES
		3 PLACES ± --- ± ---		DRAWN BY JLONG	DATE 03-15-2004	
		2 PLACES ± 0.13 ± ---		CHECKED BY REGNIER	DATE 03-15-2004	MOLEX INCORPORATED MATERIAL NO. SEE CHART SD-75462-100
1 PLACE ± 0.25 ± ---		ANGULAR ± 5 °	APPROVED BY KREGNIER	DATE 05-12-2004	DOCUMENT NO. SD-75462-100	SHEET NO. 3 OF 3
REV D	DESCRIPTION	DRAFT WHERE APPLICABLE MUST REMAIN WITHIN DIMENSIONS	THIS DRAWING CONTAINS INFORMATION THAT IS PROPRIETARY TO MOLEX INCORPORATED AND SHOULD NOT BE USED WITHOUT WRITTEN PERMISSION			