

TECHNICAL CHARACTERISTICS

MATERIAL
 INSULATOR: NYLON 9T
 FLAMABILITY RATING: UL94-V0
 COLOR: BLACK
 CONTACT MATERIAL: COPPER ALLOYS
 CONTACT TYPE: STAMPED
 CONTACT PLATING: SELECTIVE GOLD
 SHIELDING: BRASS NI PLATED
 QUALITY CLASS: 1500 MATING CYCLE

ENVIRONMENTAL
 OPERATING TEMPERATURE: -40 UP TO 105°C
 COMPLIANCE: LEAD FREE AND ROHS

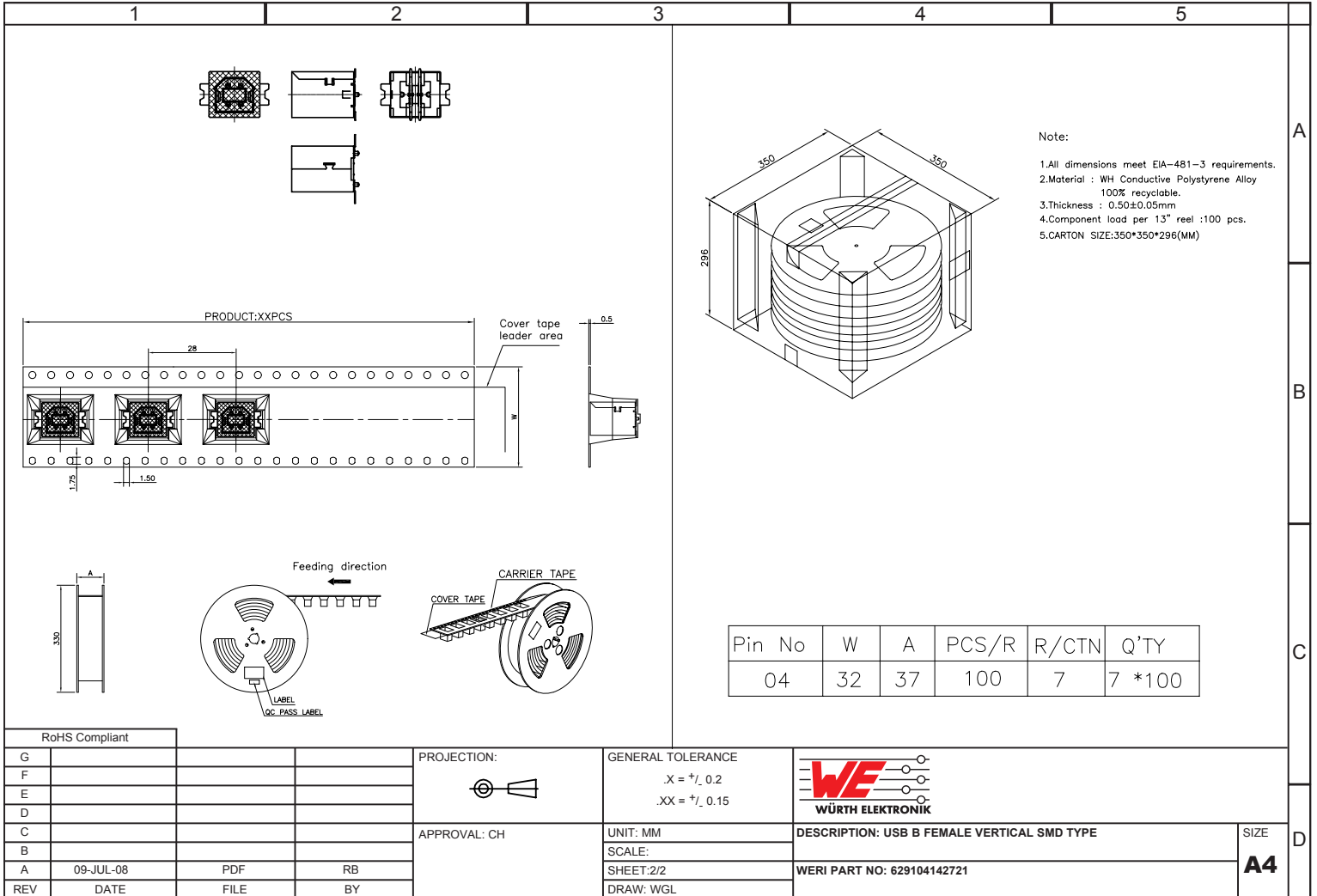
ELECTRICAL
 CURRENT RATING: 1A MAX
 WORKING VOLTAGE: 30V
 INSULATOR RESISTANCE: >1000 MOHM
 DIELECTRIC WITHSTANDING VOLTAGE: 750V AC/MN
 CONTACT RESISTANCE: 20 mOHM MAX

SOLDERING
 REFLOW PROCESS ONLY

PACKAGING
 TAPE & REEL

PCB LAYOUT - COMPONENT VIEW

| | | | | | | | | |
|----------------|-----------|------|----|-----------------|---|--|---|-----------|
| RoHS Compliant | | | | PROJECTION: | GENERAL TOLERANCE .X = +/_ 0.2 .XX = +/_ 0.15 | | DESCRIPTION: USB B FEMALE VERTICAL SMD TYPE | SIZE |
| G | | | | | | | | A4 |
| F | | | | | | | | |
| E | | | | | | | | |
| D | | | | | | | | |
| C | | | | | | | | |
| APPROVAL: CH | | | | UNIT: MM | WÜRTH ELEKTRONIK | | | |
| B | | | | SCALE: | WÜRTH ELEKTRONIK | | | |
| A | 09-JUL-08 | PDF | RB | SHEET: 1/2 | WERI PART NO: 629104142721 | | | |
| REV | DATE | FILE | BY | DRAW: PDJ | | | | |



| Pin No | W | A | PCS/R | R/CTN | Q'TY |
|--------|----|----|-------|-------|--------|
| 04 | 32 | 37 | 100 | 7 | 7 *100 |

RoHS Compliant

| | | | |
|-----|-----------|------|----|
| G | | | |
| F | | | |
| E | | | |
| D | | | |
| C | | | |
| B | | | |
| A | 09-JUL-08 | PDF | RB |
| REV | DATE | FILE | BY |

| | |
|-------------|----|
| PROJECTION: | |
| APPROVAL: | CH |

| | |
|-------------------|--------------------------------|
| GENERAL TOLERANCE | .X = +/- 0.2 .XX = +/- 0.15 |
| UNIT: | MM |
| SCALE: | |
| SHEET: | 2/2 |
| DRAW: | WGL |

| | |
|----------------------------|---|
| | DESCRIPTION: USB B FEMALE VERTICAL SMD TYPE |
| WERI PART NO: 629104142721 | SIZE |
| | A4 |