

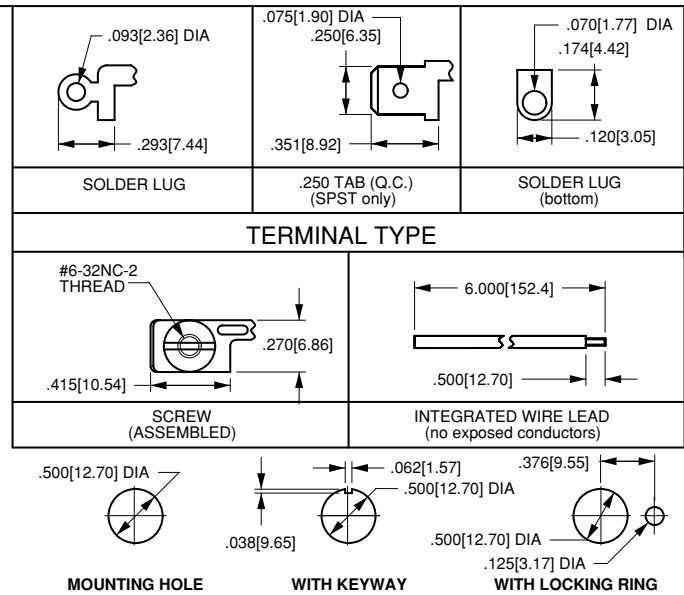
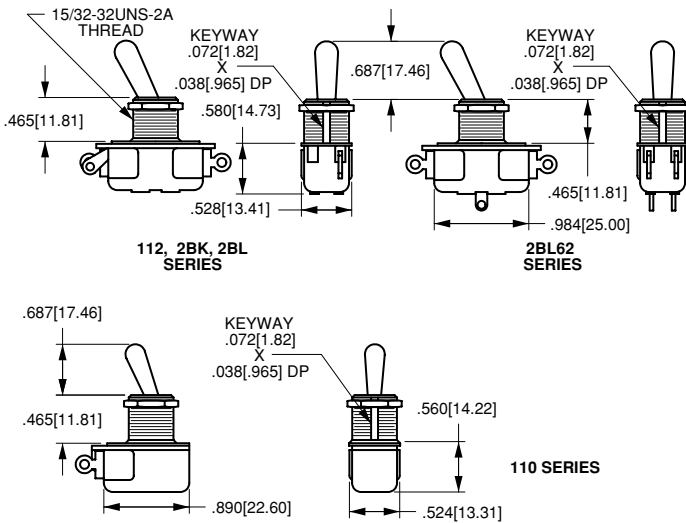
110-Series Heavy Action Toggle Switches



The 110-Series is a compactly designed, versatile metal construction toggle switch. Features include single or double pole options, maintained or momentary construction with termination choices including solder lug end or bottom, wire leads and .250 tab terminals. The quick make/quick break contact mechanism makes the switch suitable for high voltage (125-250 volt) applications. This switch is popular within the Small Appliance, Floor Maintenance, and most low current AC/DC market segments.

Dielectric Strength
UL/CSA: 1000 - live to dead metal & opposite polarity
Electrical Life
25,000 cycles
Mechanical Life
15,000 cycles
Operating Temperature
0°F to 150°F (-17.8°C to +65.6°C)

110-Series Dimensional Specifications: in.[mm]



110-S - 73

1 Base Part Number 2 Toggle /Bushing Length

1 BASE PART NUMBER: SERIES/POLES/CIRCUITRY/RATING/TERMINATION ¹					
	3A 250V, 6A 125V, AC/DC	solder lug (end)	solder lug (bottom)	screw term.	wire leads
single pole					
ON-NONE-OFF	110	110-B	110-S	111-16	
(ON)-NONE-OFF	110-M-NO	110-BM-NO	110-SM-NO	111-16M-NO	
ON-NONE-(OFF)	110-M-NC	110-BM-NC	110-SM-NC	111-16M-NC	
double pole					
ON-NONE-OFF	2BK62	-	-	2BK65	
ON-NONE-ON	2BL62	-	-	2BL65	
	1A 250V, 3A 250V, AC/DC	solder lug (end)	solder lug (bottom)	screw term.	wire leads
single pole					
ON-NONE-ON	112	-	-	112-A	
ON-NONE-(ON)	112-M	-	-	112-M-A	

2 BAT TOGGLE/BUSHING LENGTH			
unsealed	sealed	toggle length	bushing length
52	57	0.375	0.343
63	68	0.500	0.465
73	78	0.687	0.465

NOTE 1 .250 tab termination also available. Consult factory for catalog number callout.