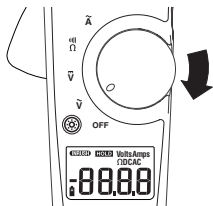


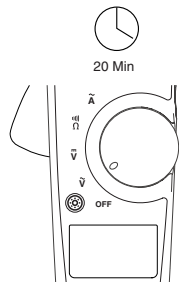
FLUKE®
334, and 335
Clamp Meter
Instruction Card

Clamp Meter
 r.
 335, 336, 337
 Utiliser cet appareil.
 oggere
 7 Clamp Meter
 die
 334, 335, 336, 337
 uridad "333, 334,
 meet" antes de
 Meter Safety
 amp Meter Safety
 t
 Meter Safety Sheet
 37 Clamp Meter
 umentet i brug.
 Meter Safety
 .
 335, 336, 337
 u använder
 , 336, 337 Clamp
 36, 337 クランプ
 みください。
 , 335, 336, 337
 試しよ。
 335, 336, 337
 335, 336, 337
 335, 336, 337
 Safety Sheet

On/Off

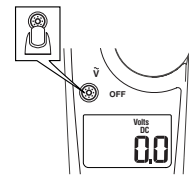
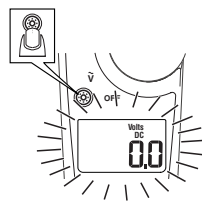


Automatic Off



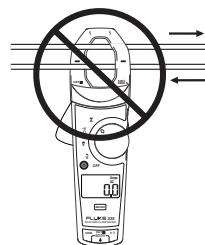
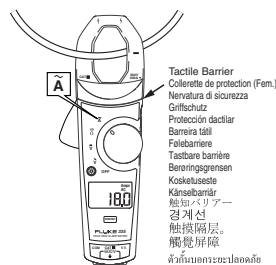
Backlight

334, 335



~

Fluke 333 0 - 400 A
 Fluke 334, 335 0 - 600 A



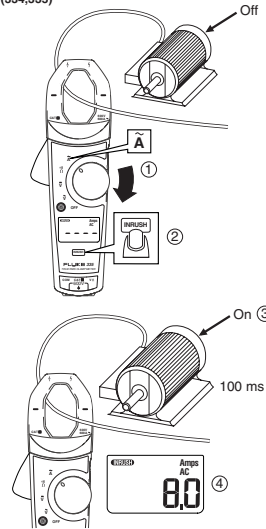
Currents Cancel

Les courants s'annulent, Le correnti si cancellano,
 Ströme abbrechen, Se cancelan las corrientes,
 Cancelamento de correntes, Strömen kompensieren
 elkaar, Strömufjævning, Strømstyrkeannullering
 Strömstyrker udbalancerer, Virta pois, Avbryt ström
 電流のキャンセル, 전류 상쇄, 電流互相取消,
 電流互相取消, 取消電流

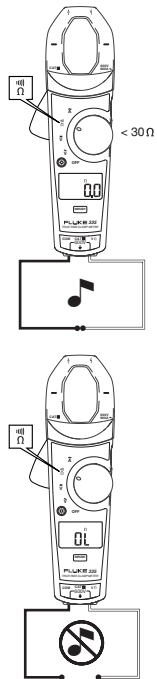
Inrush Current

Appel de courant, Corrente di spunto,
 Einschaltstoßstrom, Corrente de entrada, Corrente
 de partida, Inkomende stroom,
 Innkopplingsströmspiss, Sekundær
 tomgangsströmstyrke, Tasoitettu virta, Inström,
 突入電流, 유입 전류, 湧流, 涌流, 涌流

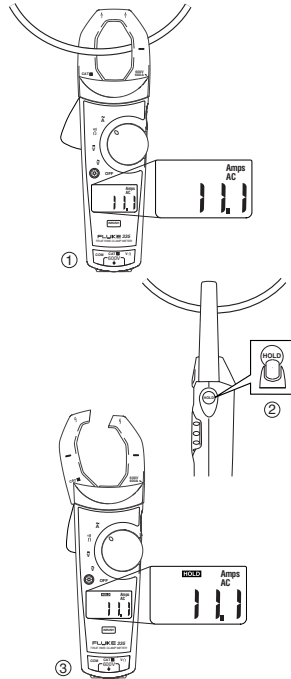
(334,335)



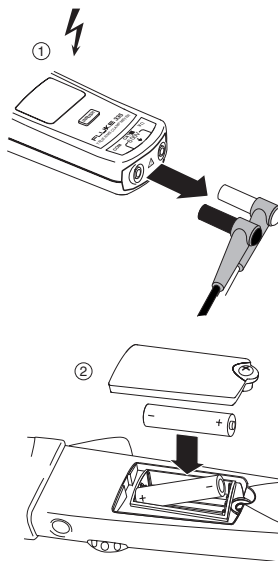
Continuity $\text{m}\Omega$



Hold



Battery Replacement



Specifications

* @ 23 °C ± 5 °C, 0 - 90% RH		333	334	335
\bar{I} (50/60 Hz)	Range	0 - 400.0 A	0 - 600.0 A	
	Accuracy	2 % ± 5 counts		
	Crest Factor add 2% for CF > 2	—	2.4 @ 500 A 2.0 @ 600 A	
	AC Response	Avg	rms	
Inrush	Integration Time	—	100 ms	
\bar{V} , \bar{V}	Range	0 - 600.0 V		
	Accuracy	1 % ± 5 counts		
Ω	Range	0 - 600.0 Ω	0 - 600.0 Ω 600 - 6000 Ω	
	Accuracy	1.5 % ± 5 counts		
	Continuity	$\text{m}\Omega$	≤ 30 Ω	
Storage Temperature	-40 °C to 60 °C			
Operating Temperature	-10 °C to 50 °C			
Altitude	2500 m			
EMC - instrument unspecified for use in EMC field ≥ 0.5 V/m				
CAT III 600V, pollution degree II: CAT III equipment is designed to protect against transients in equipment in fixed - equipment installations, such as distribution panels, feeders and short branch circuits, and lighting systems in large buildings.				
* < 18 °C, > 28 °C add 0.1 x (specified accuracy) / °C				