

**Power Inlet Connectors**

# SR Series



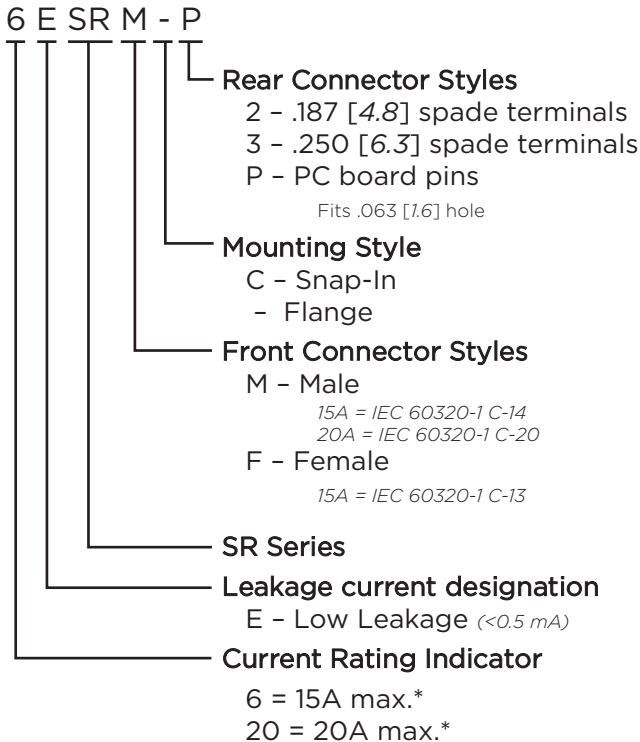
UL Recognized  
CSA Certified  
VDE Approved\*



## SR Series

- Full Line of popular AC receptacles
- Male and female power line connectors
- Snap-in and flange mount versions
- IEC60320-1 C-13 & C14 inlets rated up to 15A
- IEC60320-1 C-19 & C-20 inlets rated up to 20A

## Ordering Information



\*15A versions are tested by Underwriters Laboratories to US and Canadian requirements and are VDE approved at 10A, 250VAC  
20A versions are tested by Underwriters Laboratories to US and Canadian requirements and are VDE approved at 16A, 250VAC

## Specifications

**Rated Voltage (max.):** 250 VAC

**Materials:**

**Insulator:** Thermoplastic UL 94V-0 flame rating

**Prongs:** Solid brass, nickel plated

**Terminals:** Brass, tin plated

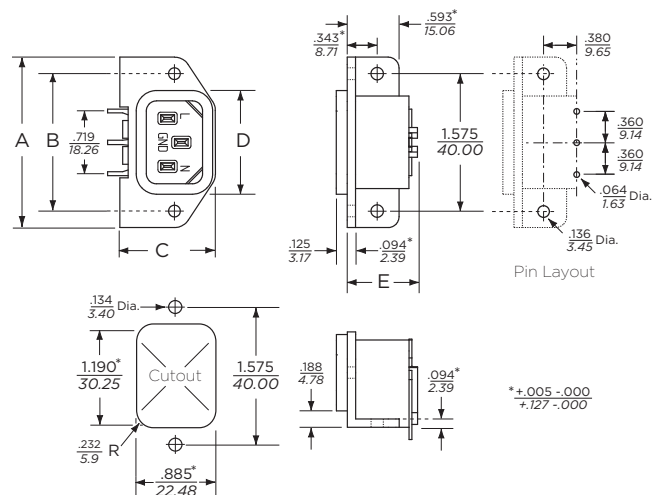
**Temperature Rating:** For "cold" connections, 65°C

## Available Part Numbers

Type	Male Connector	Female Connector
PC Pins	6ESRM-P	
Snap-In	6ESRMC2	6ESRFC3
Flange Mount	6ESRM-3	6ESRF-3
Snap-In	20ESRMC2	
Flange Mount	20ESRM-3	

## Case Styles

### 6ESRM-P



3

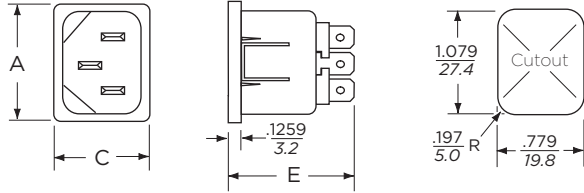
Power Inlet Filters & Power Entry Modules

**Power Inlet Connectors** (continued)

# SR Series

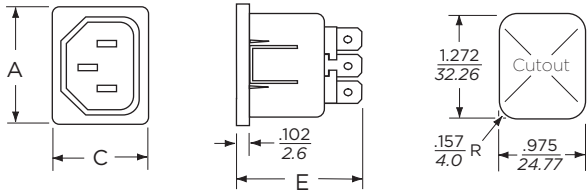
**Case Styles** (continued)

**6ESRMC2**



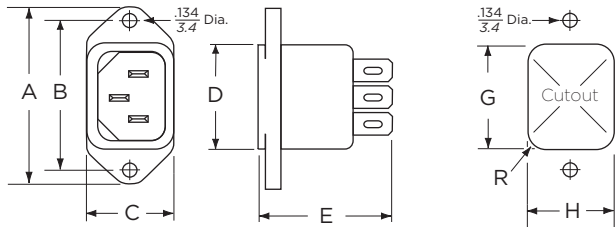
Typical Dimensions:  
Front Connector: IEC 60320-1 C14  
Rear Terminals: .187 [4.8] with .07 [1.8] Dia. hole

**6ESRFC3**



Typical Dimensions:  
Front Connector: IEC 60320-1 C13  
Rear Terminals: .25 [6.3] with .07 [1.8] Dia. hole

**6ESRM-3**

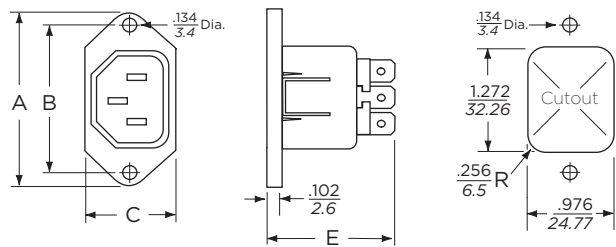


Cutout Dimensions:

	Rear Mount	Front Mount
G:	1.19 [30.23]	1.079 [27.4]
H:	0.894 [22.7]	0.779 [19.8]
R:	0.232 [5.9]	0.197 [5.0]

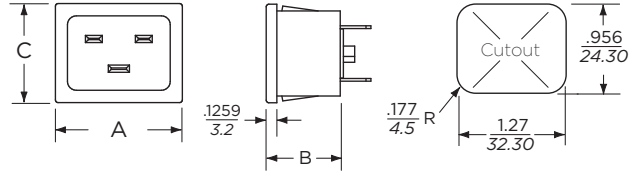
Typical Dimensions:  
Front Connector: IEC 60320-1 C14  
Rear Terminals: .25 [6.3] with .07 [1.8] Dia. hole

**6ESRF-3**



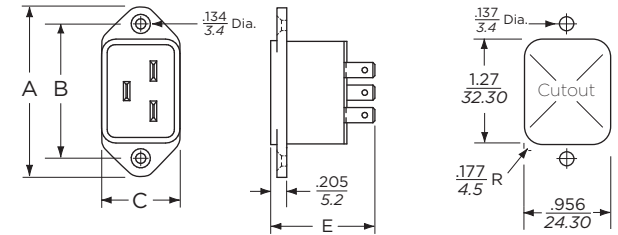
Typical Dimensions:  
Front Connector: IEC 60320-1 C13  
Rear Terminals: .25 [6.3] with .07 [1.8] Dia. hole

**20ESRMC2**



Typical Dimensions:  
Front Connector: IEC 60320-1 C20  
Rear Terminals: .25 [6.3] with .07 [1.8] Dia. hole

**20ESRM-3**



Typical Dimensions:  
Front Connector: IEC 60320-1 C20  
Rear Terminals: .25 [6.3] with .07 [1.8] Dia. hole

**Case Dimensions**

Part No.	A (max.)	B <i>+0.17 -0.006</i> <i>+43 -15</i>	C (max.)	D (max.)	E (max.)
6ESRM-P	<b>1.96</b> 49.8	<b>1.575</b> 40.0	<b>1.094</b> 27.8	<b>1.118</b> 28.39	<b>.807</b> 20.5
6ESRMC2	<b>1.182</b> 30.00	-	<b>.885</b> 22.5	-	<b>1.192</b> 30.3
6ESRFC3	<b>1.39</b> 35.5	-	<b>1.09</b> 27.8	-	<b>1.496</b> 38.0
6ESRM-3	<b>1.96</b> 49.8	<b>1.575</b> 40.0	<b>.885</b> 22.5	<b>1.19</b> 30.23	<b>1.275</b> 32.4
6ESRF-3	<b>1.953</b> 49.6	<b>1.575</b> 40.0	<b>1.133</b> 28.8	-	<b>1.496</b> 38.0
20ESRMC2	<b>1.377</b> 35.0	<b>.921</b> 23.4	<b>1.06</b> 27.0	-	-
20ESRM-3	<b>2.087</b> 53.0	<b>1.653</b> 42.0	<b>.999</b> 25.4	-	<b>1.318</b> 33.5