

# Central<sup>TM</sup> Semiconductor Corp.

145 Adams Avenue, Hauppauge, NY 11788 USA  
Tel: (631) 435-1110 • Fax: (631) 435-1824

Manufacturers of World Class Discrete Semiconductors

CBR1 SERIES  
CBR2 SERIES

SILICON BRIDGE RECTIFIERS

CASE A

## DESCRIPTION

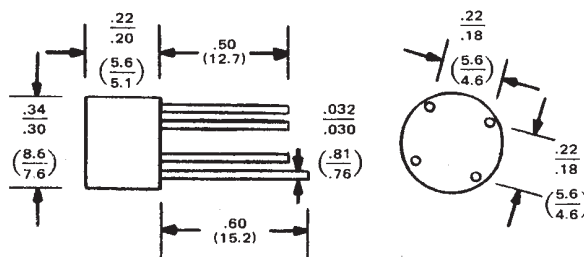
The CENTRAL SEMICONDUCTOR CBR1, CBR2, types are silicon single phase full wave Bridge Rectifiers designed for general purpose applications.

## MAXIMUM RATINGS (T<sub>A</sub>=50°C)

	SYMBOL	CBR1 -010	CBR1 -020	CBR1 -040	CBR1 -060	CBR1 -080	CBR1 -100	UNIT
Peak Repetitive Reverse Voltage	V <sub>R</sub> RRM	100	200	400	600	800	1000	V
DC Blocking Voltage	V <sub>R</sub>	100	200	400	600	800	1000	V
RMS Reverse Voltage	V <sub>R</sub> (RMS)	70	140	280	420	560	700	V
Average Forward Current (CBR1)	I <sub>O</sub>			1.5				A
Average Forward Current (CBR2)	I <sub>O</sub>			2.0				A
Peak Forward Surge Current (CBR1)	I <sub>FSM</sub>			50				A
Peak Forward Surge Current (CBR2)	I <sub>FSM</sub>			60				A
Operating and Storage Junction Temperature	T <sub>J</sub> , T <sub>stg</sub>	-65 TO +150						°C

## ELECTRICAL CHARACTERISTICS (T<sub>A</sub>=25°C)

SYMBOL	TEST CONDITIONS	MIN	MAX	UNIT
V <sub>F</sub> (CBR1 Series)	I <sub>F</sub> =1.0A		1.0	V
V <sub>F</sub> (CBR2 Series)	I <sub>F</sub> =2.0A		1.1	V
I <sub>R</sub>	V <sub>R</sub> =Rated V <sub>R</sub> RRM		10	μA



DIMENSIONS IN INCHES (MILLIMETERS)