



MAX2741 Evaluation Kit

General Description

The MAX2741 evaluation kit (EV kit) simplifies evaluation of the MAX2741 L1-band global positioning system (GPS), radio-frequency (RF), front-end receiver IC. It enables testing of the device's RF performance and requires no additional support circuitry. The EV kit's signal inputs and outputs use SMA connectors to facilitate the connection of RF test equipment.

Features

- ◆ Easy Evaluation of the MAX2741
- ◆ +2.7V to +3.0V Single-Supply Operation
- ◆ All Critical Peripheral Components Included

Ordering Information

PART	TEMP RANGE	IC PACKAGE
MAX2741EVKIT	-40°C to +85°C	28 Thin QFN-EP*

*EP = Exposed paddle.

Component List

DESIGNATION	QTY	DESCRIPTION
C1	1	2.2pF \pm 0.1pF (0402) capacitor Murata GRM1555C1H2R2B
C2, C3, C4, C8, C10, C23, C27, C33, C47, C50–C54, C60	15	0.1 μ F \pm 10% (0402) capacitors Murata GRM155R61A104K
C5, C6, C9, C11, C12, C13, C48	7	100pF \pm 5% (0402) capacitors Murata GRM1555C1H101J
C7, C14, C24, C25, C26, C28, C30, C31	0	Open
C20, C21, C32, C57, C58	5	1000pF \pm 10% (0402) capacitors Murata GRM15571H102K
C22	1	2200pF \pm 10% (0402) capacitor Taiyo Yuden UMK105BJ222KW
C34–C38, C49	6	0.01 μ F \pm 10% (0402) capacitors Murata GRM155R71C103K
C39, C40	2	39pF \pm 5% (0402) capacitors Taiyo Yuden UMK105CH390JW
C41–C44	4	680pF \pm 10% (0402) capacitors Taiyo Yuden UMK105BJ681KW
C45, C46	2	5.6pF \pm 0.5pF (0402) capacitors Murata GRM1555C1H5R6D
C59, C62	2	1.0 μ F \pm 10% (0402) capacitors Murata GRM155R60J105K
J1	1	Connector, DB25, right-angle male AMP 747238-4

DESIGNATION	QTY	DESCRIPTION
J2, J10, J11, J12, J14, J19	6	Connectors, SMA edge mount, round contact Johnson 142-0701-801
J3–J9, J15–J18, J23, J24	13	1 x 2-pin headers, 2-pin inline headers, 100-mil centers Sullins PTC36SAAN
J3–J9, J15–J18, JP1	12	Shunts, shorting jumpers Sullins STC02SYAN
J13	0	Not installed
JP1	1	1 x 3-pin header, 3-pin inline header, 100-mil center Sullins PTC36SAAN
L1	1	6.2nH \pm 5% (0402) inductor Coilcraft CS-6N2XJBW
L2, L3	2	470nH \pm 2% (0603) inductors Murata LQW18ANR47G00
R1	1	36.5k Ω \pm 1% (0402) resistor
R2–R5, R9–R12, R16–R19, R26–R29, R32	17	0 Ω \pm 5% (0402) resistors
R6, R8, R25, R33–R41	12	10k Ω \pm 5% (0402) resistors
R7, R20–R24	0	Open
R30	1	30 Ω \pm 5% (0402) resistor

Evaluates: MAX2741

MAX2741 Evaluation Kit

Component List (continued)

DESIGNATION	QTY	DESCRIPTION
T1, T2, T3	3	Balun transformers, surface-mount TOKO 617DB-1675
TP1, TP2	0	Test points, not installed
U1	1	GPS downconverter Maxim MAX2741ET1
U2, U3	2	Hex buffers/drivers with open drain, 14-pin SOP Texas Instruments SN74LV07ADR
U4	1	Ultra-low-noise, high PSRR, low-dropout linear regulator, SC70 Maxim MAX8510EXK29-T
Y1	1	19.2MHz voltage-controlled TCXO KSS/KYOCERA VC-TCXO-208C5-19P2

Detailed Description

Component Suppliers

SUPPLIER	PHONE	FAX
Alpha	360-647-2360	260-671-4936
ATC	949-583-9119	949-583-9213
Coilcraft	847-639-6400	847-639-1469
Kayama	219-489-1533	219-489-2261
Murata	770-436-1300	770-436-3030

Note: Indicate you are using the MAX2741 when contacting these manufacturers.

The MAX2741 EV kit simplifies evaluation of the MAX2741 GPS RF receiver front-end IC. It enables testing of the device's RF performance and requires no additional support circuitry. The EV kit's signal inputs and outputs use SMA connectors to facilitate the connection of RF test equipment. In this section, detailed descriptions of the EV kit board as well as the control interface/software are given to facilitate better evaluation of the IC.

Input/Output Ports

The MAX2741 EV kit has one RF input port, two IF output ports, one IF input port, one reference clock input port, and a GPS IF output port:

- RFIN (J2) is the GPS RF signal input port with SMA connector
- 1st IFOUT is the output of the 1st stage
- 2nd IFOUT is the output of the 2nd stage
- 2nd IFIN is the input to the 2nd stage

- REFCLK is the external reference clock input to the phase-locked loop
- GPSIF is the digital output after the 3-bit analog-to-digital converter

Measurement Configuration

Important Notice: The EV kit board provides all necessary components to test the entire tuner as one receiver (RF input to the 2nd IF analog output) or to independently test the 1st stage (RF input to 1st IF output) and the 2nd stage (the 2nd IF input to the 2nd IF output). All the required passive components are provided and installed on the board.

To test the entire tuner as one receiver, the user must disconnect the connections to the 1st IF output SMA and the 1st IF input SMA by removing C35, C36, C37, and C38.

To test the 1st stage and the 2nd stage independently, the user must disconnect the connections to the passive, interstage IF filter by removing R12, C39, C40, C41, C42, C44.

Jumper Description

There are eight jumpers on the MAX2741 EV kit. See Table 1.

Table 1. Jumper Functions

JUMPER	STATE	FUNCTION
J3	1-2	Connect the VCC6 pin supply to VCC.
	N.C.	Connect the VCC6 pin to an external supply.
J4	1-2	Connect the VCC1 pin to VCC.
	N.C.	Connect the VCC1 pin to an external supply.
J5	1-2	Connect the VCC2 pin to VCC.
	N.C.	Connect the VCC2 pin to an external supply.
J6	1-2	Connect the VCC3 pin to VCC.
	N.C.	Connect the VCC3 pin to an external supply.
J7	1-2	Connect the VCC4 pin to VCC.
	N.C.	Connect the VCC4 pin to an external supply.
J8	1-2	Connect the VCC5 pin to VCC.
	N.C.	Connect the VCC5 pin to an external supply.
J9	1-2	Connect to VCC.
	N.C.	Connect an external supply.
JP1	1-2	Normal operation.
	2-3	Shut down the MAX2741.
	N.C.	Control the MAX2741 externally.

MAX2741 Evaluation Kit

Quick Start

The MAX2741 EV kit is fully assembled and factory tested. Follow the instructions in the *Connections and Setup* section for proper device evaluation.

Test Equipment Required

This section lists the recommended test equipment to verify operation of the MAX2741. It is intended as a guide only, and some substitutions are possible.

- An RF signal generator capable of delivering RF power as low as -120dBm and as high as 0dBm at the 1575.42MHz operating frequency such as HP E4433B, or equivalent
- An RF spectrum analyzer that covers the MAX2741 operating frequency range, as well as a few harmonics such as FSEB20, or equivalent
- One DC supply capable of up to 100mA at 2.6V to 3.3V
- Power meter capable of measuring up to 0dBm
- One ammeter to measure the supply current (optional)
- A PC with Windows® 98/XP

Connections and Setup

This section provides a step-by-step guide to operating the EV kit and testing the device's functions. This example assumes that you intend to test the tuner as one receiver. (See the *Measurement Configuration* in the *Detailed Description* section.) Ensure that the shunts are across jumpers J3–J9. Connect pin 1 to pin 2 of JP1. **Do not turn on the DC power or RF signal generators until all connections are made:**

- 1) Connect a DC supply set to +2.75V to the VDC and GND terminals on the EV kit. Do not turn on the supply.
- 2) Connect the RF signal generator to the RFIN SMA connector; do not turn on the generator's output. Set the output of the RF signal generator to 1575.42MHz and power level to -90dBm.

- 3) Connect the EV kit to a PC through a parallel cable.
- 4) Download the MAX2741 software from the Maxim website at www.maxim-ic.com. Install and run the software on an IBM-compatible PC.
- 5) Connect the spectrum analyzer to the 2nd IFOUT SMA connector. Set the center frequency to 3.78MHz and the span to 1MHz.
- 6) Turn on the DC power supply. The supply current should read approximately 31mA.
- 7) Enable the RF generator's output. Use the software to set the registers and send to the part. Click on the Test Mode button, then choose Lowpass Filter and ADC, click Next, and choose Observe IF Signal at Output of LPF; then click Finish.
- 8) The spectrum analyzer should display a tone at 3.78MHz at approximately -8dBm.

Layout Issues

A good PC board layout is an essential part of RF circuit design. The EV kit PC board can serve as a guide for laying out a board using the MAX2741. Keep traces carrying RF signals as short as possible to minimize radiation and insertion loss. Use impedance control on all RF signal traces. Bypass the VCC node of the PC board with capacitors to the closest ground.

Windows is a registered trademark of Microsoft Corp.

MAX2741 Evaluation Kit

Evaluates: MAX2741

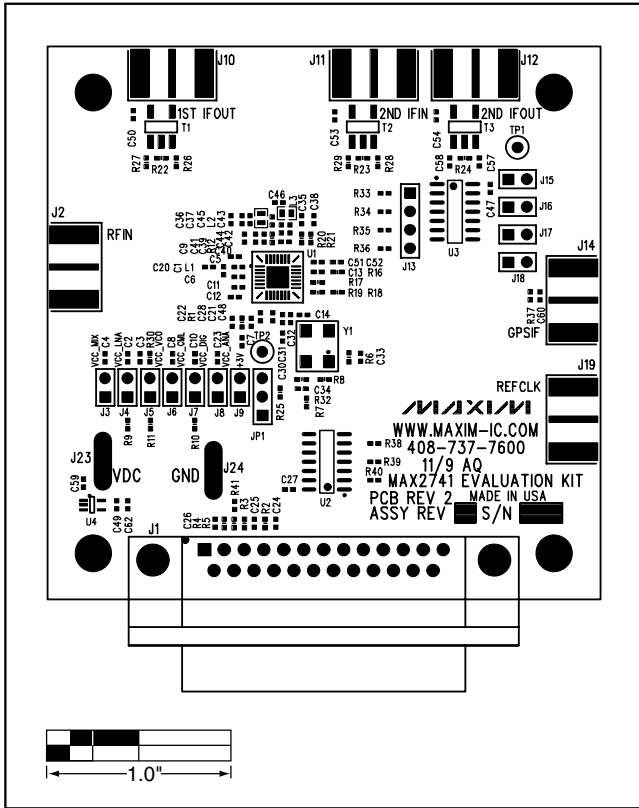


Figure 2. MAX2741 EV Kit Component Placement Guide—Component Side

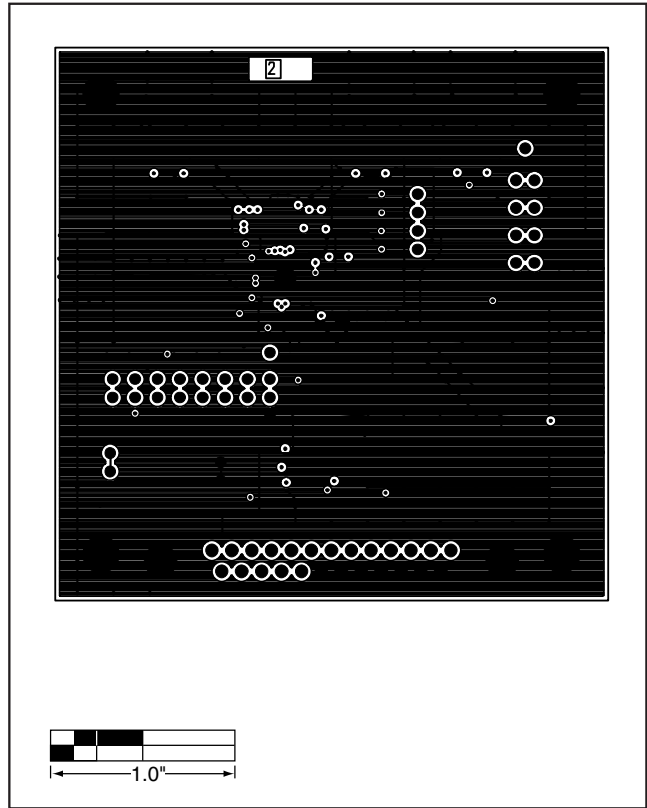


Figure 3. MAX2741 EV Kit PC Board Layout—Layer 2

MAX2741 Evaluation Kit

Evaluates: MAX2741

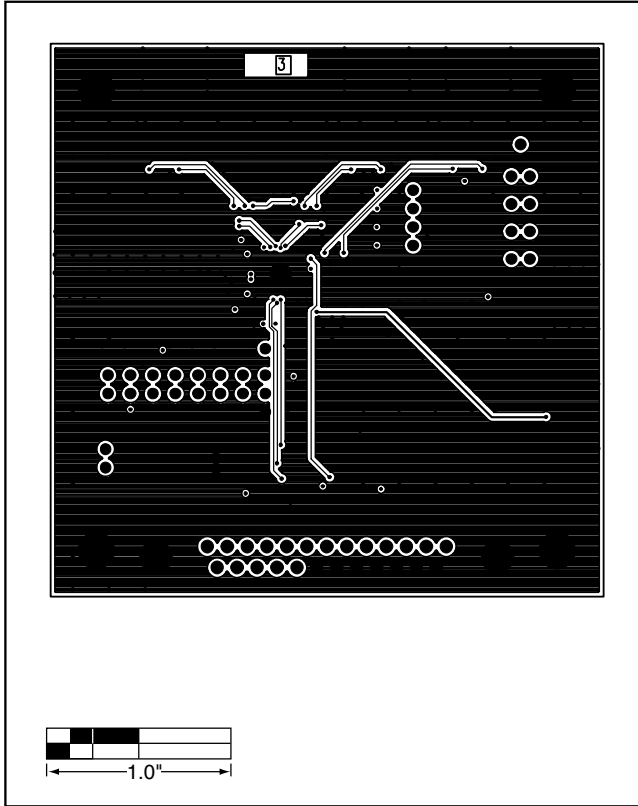


Figure 4. MAX2741 EV Kit PC Board Layout—Layer 3

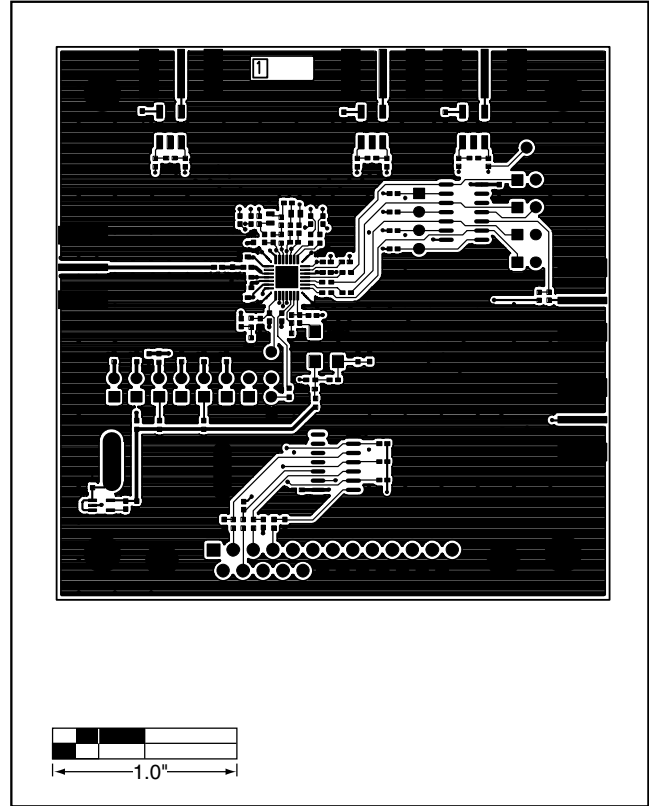


Figure 5. MAX2741 EV Kit PC Board Layout—Component Side

MAX2741 Evaluation Kit

Evaluates: MAX2741

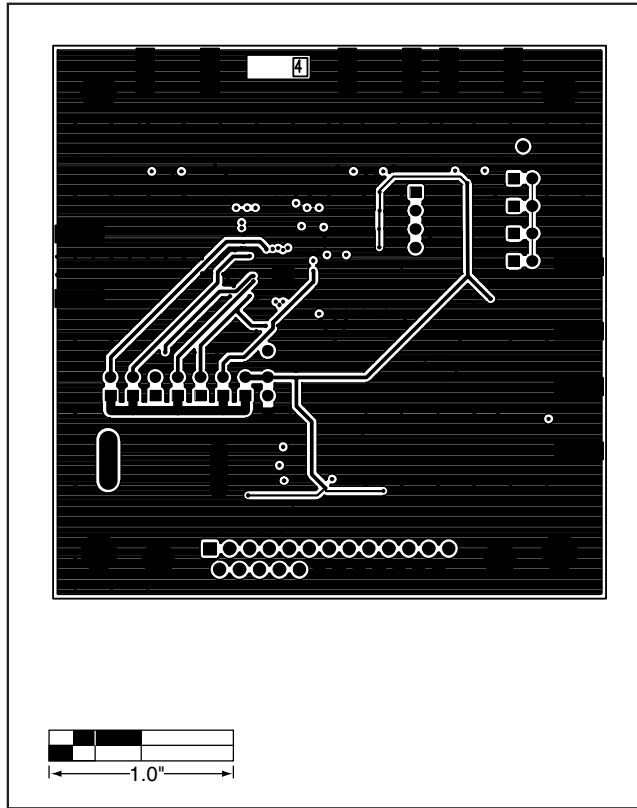


Figure 6. MAX2741 EV Kit PC Board Layout—Secondary Side

Maxim cannot assume responsibility for use of any circuitry other than circuitry entirely embodied in a Maxim product. No circuit patent licenses are implied. Maxim reserves the right to change the circuitry and specifications without notice at any time.

Maxim Integrated Products, 120 San Gabriel Drive, Sunnyvale, CA 94086 408-737-7600 _____ 7

© 2005 Maxim Integrated Products

Printed USA

MAXIM is a registered trademark of Maxim Integrated Products, Inc.