

**THE FASTEST WAY
TO WIRELESS.**

ConnexModem™

PRODUCT OVERVIEW

AeroComm's wireless **ConnexModem** data comm system cuts the cord between computer and phone jack. The combination transceiver/modem device enables dial-up networking from remote areas where phone connections aren't convenient.

Systems integrators and end users alike can set up RS232/RS485/RS422 terminals without wires, making **ConnexModem** suitable for both stationary and mobile communications. The system can be set up in minutes to provide communication over distances of up to 20 miles line-of-sight (900MHz).

AeroComm's proprietary protocol guarantees secure transmissions. And because **ConnexModem** uses FHSS technology, it resists interference even in RF-hostile environments. Use of the license-free 2.4GHz or 900MHz band ensures that no additional agency certification is required.

For volume commercial applications, RF engineering support helps OEMs reduce R&D costs and speed time to market.

- **Simple cable replacement for retro-fits & new installs**
- **Transmits around corners, through walls & obstructions**
- **Reliable communication at data rates up to 56 Kbps**

SETUP & OPERATION

The complete system is comprised of a remote node (**ConnexLink**), which enables local wireless data transmissions, and a telecom node (**ConnexModem**), which bridges the local wireless link to a telecom system for longer range communication.

Each device utilizes an industry-standard interface: **ConnexModem** attaches to a standard phone jack while **ConnexLink** connects to a serial port. Both support a point-to-point configuration; multiple sets can be used in the same area.



Industrial

Dimensions:

4.75 x 2.75 x 1.17 inches (121 x 70 x 30 mm)

Weight:

6.5 ounces (186 g)

Frequency Band:

2.4GHz or 900MHz; FHSS

Interface:

ConnexModem = dual RJ11

ConnexLink = RS232, RS485, or RS422

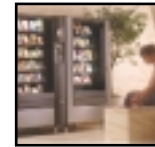


APPLICATION IDEAS



Kiosks & ATMs

When kiosks don't have convenient local access to telecom connections, **ConnexModem** enables communication to lines thousands of feet away.



Vending Machines

Check on the status of vending merchandise or money without getting up from your chair! **ConnexModem** enables machine monitoring via telephone.



Home Gateways

Wirelessly connect your residential internet appliances to unobtrusive phone jacks. **ConnexModem** talks around corners and through walls!



Mobile Internet

Easily connect mobile devices such as email terminals and web café PCs without stringing phone lines. No holes to drill, no wires to hide.

PARAMETERS:

2.4GHz MODEL

900MHz MODEL

Standard Interface	ConnexModem: dual RJ11 ConnexLink: RS232 (DB9 male); RS485 or RS422 (RJ11)	ConnexModem: dual RJ11 ConnexLink: RS232 (DB9 male); RS485 or RS422 (DB(female)
Interface Data Rate	Up to 56 Kbps	Up to 56 Kbps
Output Power	200mW	1000mW
Input Power	6Vdc to 18Vdc	6Vdc to 18Vdc
Power Consumption (typical)	ConnexModem: 600mA ConnexLink: 400mA	ConnexModem: 900mA ConnexLink: 700mA
Power Supply	AC transformer to 6Vdc via 6-foot cable (183 cm)	AC transformer to 6Vdc via 6-foot cable (183 cm)
Electrical Requirements	Line voltage 100–120V (240V outside U.S.); Frequency 50–60 Hz	Line voltage 100–120V (240V outside U.S.); Frequency 50–60 Hz
Transmission Range (typical; actual depends on environment)	Up to 500 feet (152 m) indoors; Up to 3 (5 km) miles line of sight	Up to 1500 feet (450 m) indoors; Up to 20 miles (32 km) line of sight
Operating Environment	–40° to +80° C; 10% to 90% humidity	–40° to +80° C; 10% to 90% humidity
Configuration Software	Optional for ConnexLink; Windows OS	Optional for ConnexLink; Windows OS

www.aerocomm.com

Ordering information is listed on the back of this page. Call AeroComm Sales for pricing & volume discounts.

ConnexModem™ Industrial

2.4GHz MODEL:

	PART NUMBER:
ConnexLink stand-alone 200mW transceiver unit with standard RS232 (DB9 male) interface	CL5124-200-232
ConnexLink stand-alone 200mW transceiver unit with standard RS485 (RJ11) interface	CL5124-200-485
ConnexLink stand-alone 200mW transceiver unit with standard RS422 (RJ11) interface	CL5124-200-422
ConnexModem "Starter Pack" includes one (1) ConnexModem unit and one (1) ConnexLink RS232 unit	CM5124-200-232-SP
ConnexModem "Starter Pack" includes one (1) ConnexModem unit and one (1) ConnexLink RS485 unit	CM5124-200-485-SP
ConnexModem "Starter Pack" includes one (1) ConnexModem unit and one (1) ConnexLink RS422 unit	CM5124-200-422-SP

900MHz MODEL:

ConnexLink stand-alone 1000mW transceiver unit with standard RS232 (DB9 male) interface	CL4490-1000-232
ConnexLink stand-alone 1000mW transceiver unit with standard RS485 (DB9 female) interface	CL4490-1000-485
ConnexLink stand-alone 1000mW transceiver unit with standard RS422 (DB9 female) interface	CL4490-1000-422
ConnexModem "Starter Pack" includes one (1) ConnexModem unit and one (1) ConnexLink RS232 unit	CM4490-1000-232-SP
ConnexModem "Starter Pack" includes one (1) ConnexModem unit and one (1) ConnexLink RS485 unit	CM4490-1000-485-SP
ConnexModem "Starter Pack" includes one (1) ConnexModem unit and one (1) ConnexLink RS422 unit	CM4490-1000-422-SP

Additional ConnexRF product lines for OEMs and end-users are available. Contact your AeroComm Representative for details, sales@aerocomm.com.

