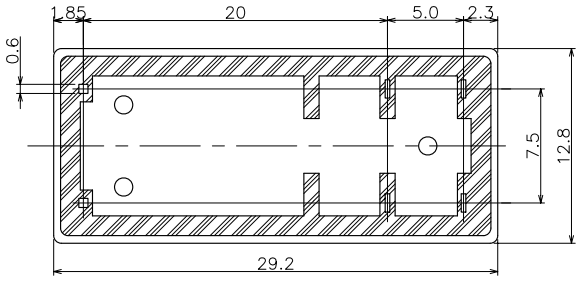
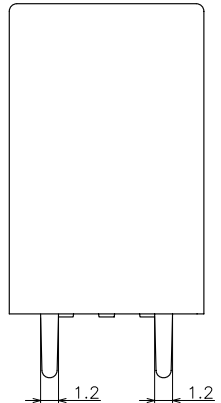
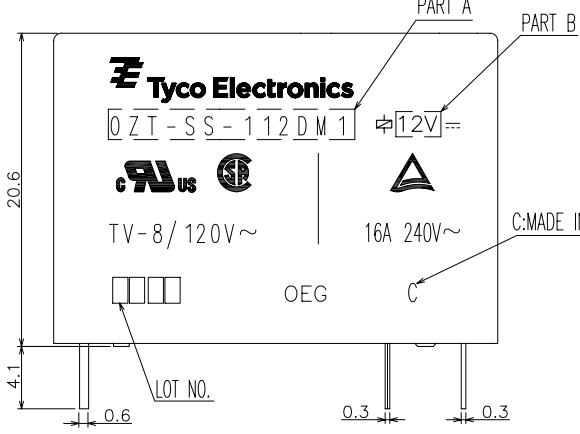
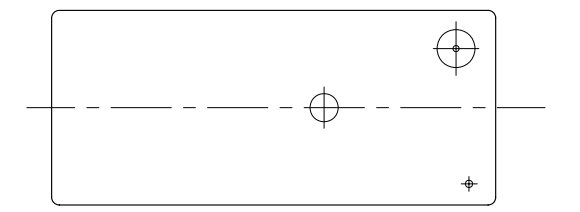


THIS DRAWING IS UNPUBLISHED. RELEASED FOR PUBLICATION
 © COPYRIGHT BY TYCO ELECTRONICS CORPORATION. ALL INTERNATIONAL RIGHTS RESERVED.

| LOC | DIST | REVISIONS | | | |
|-----|------|--------------------|-----------|------|------|
| P | LTR | DESCRIPTION | DATE | DWN | APVD |
| E1 | | CHANGE PART STATUS | 03-AUG-09 | D.L. | BH.Y |



NOTES:
 1. TERMINAL DIMENSION IS NOT INCLUDING SOLDER TIP.
 2. LOT NO. SYSTEM AS FOLLOWING:
 0 8 2 5
 WEEK
 YEAR

3. GENERAL TOLERANCE AS FOLLOW:

| TOLERANCE | |
|------------|------|
| 0~0.99mm | ±0.1 |
| 1mm~2.99mm | ±0.2 |
| 3mm MIN. | ±0.3 |

| | | | | |
|--|---|---------------------------|-------------------------------|--|
| THIS DRAWING IS A CONTROLLED DOCUMENT. | | DWN: LIU, DAVEY 13MAY2009 | Tyco Electronics Corporation | |
| DIMENSIONS: mm | | CHK: BANGHUA, YU | NAME | |
| TOLERANCES UNLESS OTHERWISE SPECIFIED: | | APVD: SUNNY, ZHANG | OZT-D/LM1 CUSTOMER DRAWING | |
| 0 PLC | ± | PRODUCT SPEC | SIZE CAGE CODE DRAWING NO | |
| 1 PLC | ± | APPLICATION SPEC | RESTRICTED TO | |
| 2 PLC | ± | WEIGHT | A3 00779 C=1461254-2 | |
| 3 PLC | ± | MATERIAL | CUSTOMER DRAWING | |
| 4 ANGLES | ± | FINISH | SCALE 4:1 SHEET 1 OF 2 REV E1 | |

4

3

2

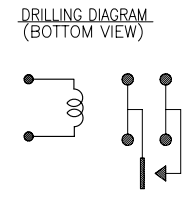
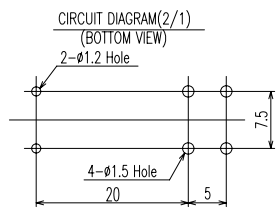
1

THIS DRAWING IS UNPUBLISHED. RELEASED FOR PUBLICATION
 © COPYRIGHT BY TYCO ELECTRONICS CORPORATION. ALL INTERNATIONAL RIGHTS RESERVED.

| LOC | DIST | REVISIONS | | | |
|-----|------|-------------|------|-----|------|
| P | LTR | DESCRIPTION | DATE | OWN | APVD |
| HB | - | A | - | - | - |

| | | | | | | |
|---------------------------|-------------|---------------|---------------|--------|--------|------|
| SUPERCEDED BY 1461392-8 | 9-1419145-2 | OZT-SH-112LM1 | OZT-SH-112LM1 | 12V | 32 | |
| ACTIVE | 2-1419124-7 | OZT-SH-124LM1 | OZT-SH-124LM1 | 24V | 31 | |
| SUPERCEDED BY 3-1440002-8 | 3-1419124-4 | OZT-SS-148LM1 | OZT-SS-148LM1 | 48V | 30 | |
| OBSOLETE | 3-1419124-3 | OZT-SS-124LM1 | OZT-SS-124LM1 | 24V | 29 | |
| OBSOLETE | 3-1419124-2 | OZT-SH-112LM1 | OZT-SS-112LM1 | 12V | 28 | |
| ACTIVE | 1-1461392-2 | OZT-SH-148LM1 | OZT-SH-148LM1 | 48V | 27 | |
| ACTIVE | 1-1461392-1 | OZT-SH-148DM1 | OZT-SH-148DM1 | 48V | 26 | |
| ACTIVE | 1-1461392-0 | OZT-SH-124LM1 | OZT-SH-124LM1 | 24V | 25 | |
| ACTIVE | 1461392-9 | OZT-SH-124DM1 | OZT-SH-124DM1 | 24V | 24 | |
| ACTIVE | 1461392-8 | OZT-SH-112LM1 | OZT-SH-112LM1 | 12V | 23 | |
| ACTIVE | 1461392-7 | OZT-SH-112DM1 | OZT-SH-112DM1 | 12V | 22 | |
| ACTIVE | 1461392-6 | OZT-SH-109LM1 | OZT-SH-109LM1 | 9V | 21 | |
| ACTIVE | 1461392-5 | OZT-SH-109DM1 | OZT-SH-109DM1 | 9V | 20 | |
| ACTIVE | 1461392-4 | OZT-SH-106LM1 | OZT-SH-106LM1 | 6V | 19 | |
| ACTIVE | 1461392-3 | OZT-SH-106DM1 | OZT-SH-106DM1 | 6V | 18 | |
| ACTIVE | 1461392-2 | OZT-SH-105LM1 | OZT-SH-105LM1 | 5V | 17 | |
| ACTIVE | 1461392-1 | OZT-SH-105DM1 | OZT-SH-105DM1 | 5V | 16 | |
| ACTIVE | 1-1461254-0 | OZT-SS-148DM1 | OZT-SS-148DM1 | 48V | 15 | |
| ACTIVE | 1461254-9 | OZT-SS-124DM1 | OZT-SS-124DM1 | 24V | 14 | |
| ACTIVE | 1461254-8 | OZT-SS-109LM1 | OZT-SS-109LM1 | 9V | 13 | |
| ACTIVE | 1461254-7 | OZT-SS-109DM1 | OZT-SS-109DM1 | 9V | 12 | |
| ACTIVE | 1461254-6 | OZT-SS-106LM1 | OZT-SS-106LM1 | 6V | 11 | |
| ACTIVE | 1461254-5 | OZT-SS-106DM1 | OZT-SS-106DM1 | 6V | 10 | |
| ACTIVE | 1461254-4 | OZT-SS-105LM1 | OZT-SS-105LM1 | 5V | 9 | |
| ACTIVE | 1461254-3 | OZT-SS-105DM1 | OZT-SS-105DM1 | 5V | 8 | |
| ACTIVE | 1461254-2 | OZT-SS-112DM1 | OZT-SS-112DM1 | 12V | 7 | |
| ACTIVE | 1461254-1 | OZT-SS-103DM1 | OZT-SS-103DM1 | 3V | 6 | |
| ACTIVE | 3-1440002-8 | OZT-SS-148LM1 | OZT-SS-148LM1 | 48V | 5 | |
| ACTIVE | 3-1440002-7 | OZT-SS-124LM1 | OZT-SS-124LM1 | 24V | 4 | |
| ACTIVE | 3-1440002-6 | OZT-SS-112LM1 | OZT-SS-112LM1 | 12V | 3 | |
| SUPERCEDED BY 1-1461392-0 | 3-1440002-5 | OZT-SH-124LM1 | OZT-SH-124LM1 | 24V | 2 | |
| SUPERCEDED BY 1461392-8 | 3-1440002-4 | OZT-SH-112LM1 | OZT-SH-112LM1 | 12V | 1 | |
| PACKING SPEC. | PART STATUS | TE PART NO | DESCRIPTION | PART A | PART B | ITEM |

107-79006



| | UV RESIN | UV SEAL | ITEM | |
|---------|-------------|--------------------|----------------|---|
| | EPOXY RESIN | SEAL | 15 | |
| | Cu ALLOY | HINGE SPRING | 14 | |
| | PBT | CASE | 13 | |
| | MW79 | MAGNETIC WIRE | 12 | |
| UL94V-0 | PET | BASE | 11 | |
| UL94HB | PBT | BOBBIN | 10 | |
| | SOLDER DIP | Cu ALLOY | COIL TERMINAL | 9 |
| UL94V-0 | PPS | CARD | 8 | |
| | Ag ALLOY | MOVABLE CONTACT | 7 | |
| | Ag ALLOY | STATIONARY CONTACT | 6 | |
| | SOLDER DIP | Cu ALLOY | MOVABLE SPRING | 5 |
| | SOLDER DIP | Cu ALLOY | NO-TERMINAL | 4 |
| | Ni PLATED | STEEL | CORE | 3 |
| | Ni PLATED | STEEL | ARMATURE | 2 |
| | Ni PLATED | STEEL | YOKE | 1 |

RELAY TYPE

THIS DRAWING IS A CONTROLLED DOCUMENT. 13MAY2005

Tyco Electronics Tyco Electronics Corporation

NAME: OZT-D/LM1 CUSTOMER DRAWING

SIZE: A3 CAGE CODE: 00779 DRAWING NO: ©=1461254-2 RESTRICTED TO: -

SCALE: 4:1 SHEET: 2 OF 2 REV: E1

PRODUCT SPEC: - APPLICATION SPEC: - WEIGHT: - CUSTOMER DRAWING

DIMENSIONS: mm TOLERANCES UNLESS OTHERWISE SPECIFIED: 0 PLC ±.05 1 PLC ±.03 2 PLC ±.02 3 PLC ±.01 4 SPC ANGLES ±.05

MATERIAL: - FINISH: -