

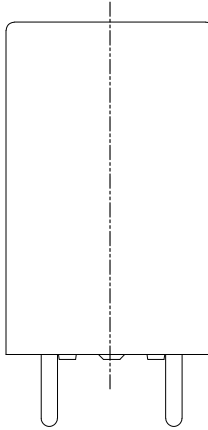
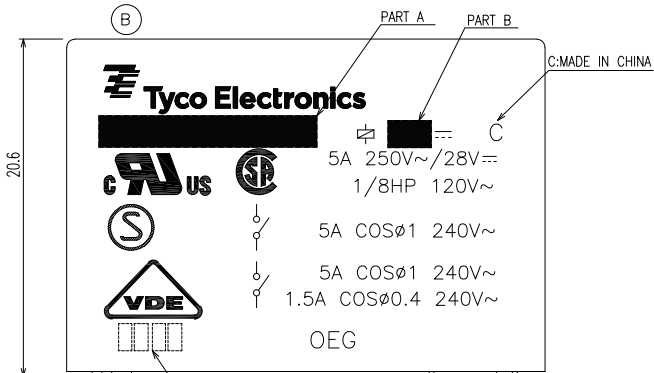
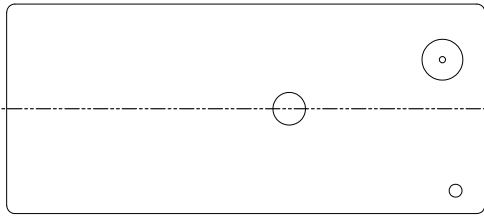
THIS DRAWING IS UNPUBLISHED.
 © COPYRIGHT

RELEASED FOR PUBLICATION
 ALL RIGHTS RESERVED.

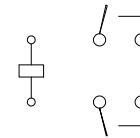
LOC HB
 DIST

REVISIONS

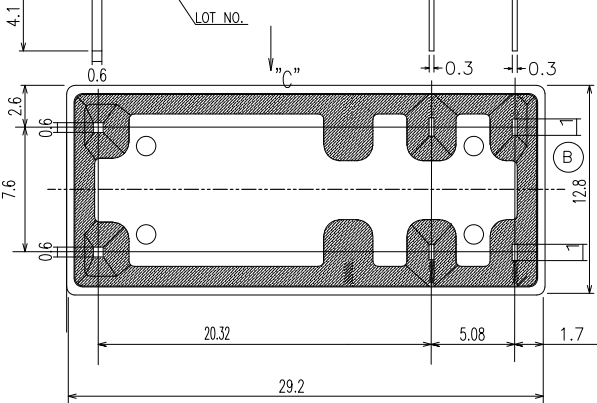
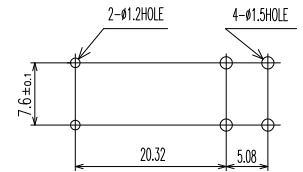
P	LTR	DESCRIPTION	DATE	OWN	APVD
B1		REVISED PER ECO-11-005140	29MAR11	RK	HMR



CONNECTION DIAGRAM
 (BOTTOM VIEW)



DRILLING DIAGRAM(2/1)
 (BOTTOM VIEW)



DIMENSIONS: mm 		TOLERANCES UNLESS OTHERWISE SPECIFIED: 0 PLC 1 PLC 2 PLC 3 PLC 4 PLC ANGLES FINISH		DWN KS.LUO CHK Xiaoning,Zhang APVD C.H.HSU PRODUCT SPEC -- APPLICATION SPEC -- WEIGHT -- CUSTOMER DRAWING	TE Connectivity NAME OMI-D/LM CUSTOMER DRAWING	
MATERIAL		SIZE A3	CAGE CODE 00779	DRAWING NO. 4-1440001-7	RESTRICTED TO	
				SCALE 4:1	SHEET 1 OF 2	REV B1

THIS DRAWING IS UNPUBLISHED.
 © COPYRIGHT

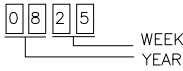
RELEASED FOR PUBLICATION
 ALL RIGHTS RESERVED.

LOC HB DIST

REVISIONS

P	LTR	DESCRIPTION	ECN	DATE	DWN	APVD

NOTES:
 1. LOT NO. SYSTEM AS FOLLOWING:



2. GENERAL TOLERANCE AS FOLLOWING:

TOLERANCE	
0~0.99mm	± 0.1
1mm~2.99mm	± 0.2
3mm MIN.	± 0.3

3. TERMINAL DIMENSION IS NOT INCLUDING SOLDER TIP.
 4. -SH-: WASHABLE TYPE

4-1461451-5	OMI-SH-248LM	OMI-SH-248LM	48V
7-1440001-5	OMI-SS-248LM	OMI-SS-248LM	48V
7-1440001-3	OMI-SS-248DM	OMI-SS-248DM	48V
6-1440001-9	OMI-SS-224LM	OMI-SS-224LM	24V
6-1440001-6	OMI-SH-224DM	OMI-SH-224DM	24V
6-1440001-3	OMI-SS-218DM	OMI-SS-218DM	18V
5-1440001-9	OMI-SS-212LM	OMI-SS-212LM	12V
5-1440001-4	OMI-SS-212DM	OMI-SS-212DM	12V
1461150-2	OMI-SS-209LM	OMI-SS-209LM	9V
1461386-2	OMI-SS-209DM	OMI-SS-209DM	9V
4-1440001-7	OMI-SS-206LM	OMI-SS-206LM	6V
4-1440001-5	OMI-SS-206DM	OMI-SS-206DM	6V
4-1440001-3	OMI-SS-205LM	OMI-SS-205LM	5V
1461386-1	OMI-SS-205DM	OMI-SS-205DM	5V
PART NUMBER	DESCRIPTION	PART A	PART B

RELAY TYPE

		UV RESIN	UV SEAL	17
		EPOXY RESIN	SEAL	16
UL94 V-0		PBT	CASE	15
		--	TAPE	14
CLASS E		UEW	MAGNETIC WIRE	13
UL94 V-0		PET	BASE	12
UL94 V-0		PBT	BOBBIN	11
	SOLDER DIP	CP WIRE	COIL TERMINAL	10
UL94 V-0		PPS	CARD	9
		Ag ALLOY	MOVABLE CONTACT	8
		Ag ALLOY	STATIONARY CONTACT	7
		Cu ALLOY	HINGE SPRING	6
	SOLDER DIP	Cu ALLOY	M TERMINAL	5
	SOLDER DIP	Cu ALLOY	MOVABLE SPRING	4
		STEEL	CORE	3
		STEEL	ARMATURE	2
		STEEL	YOKE	1
INCOMBUSTIBILITY	TREATMENT	MATERIAL	DESCRIPTION	ITEM

DIMENSIONS: mm 	TOLERANCES UNLESS OTHERWISE SPECIFIED: 0 PLC 1 PLC 2 PLC 3 PLC 4 PLC 5 PLCS	DWN	TE Connectivity
		CHK	
MATERIAL	FINISH	APVD	NAME
		PRODUCT SPEC	OMI-D/LM CUSTOMER DRAWING
CUSTOMER DRAWING	WEIGHT	APPLICATION SPEC	SIZE
		WEIGHT	A3
CUSTOMER DRAWING		RESTRICTED TO	CAGE CODE 00779 DRAWING NO 4-1440001-7 SCALE 4:1 SHEET 2 OF 2 REV B1