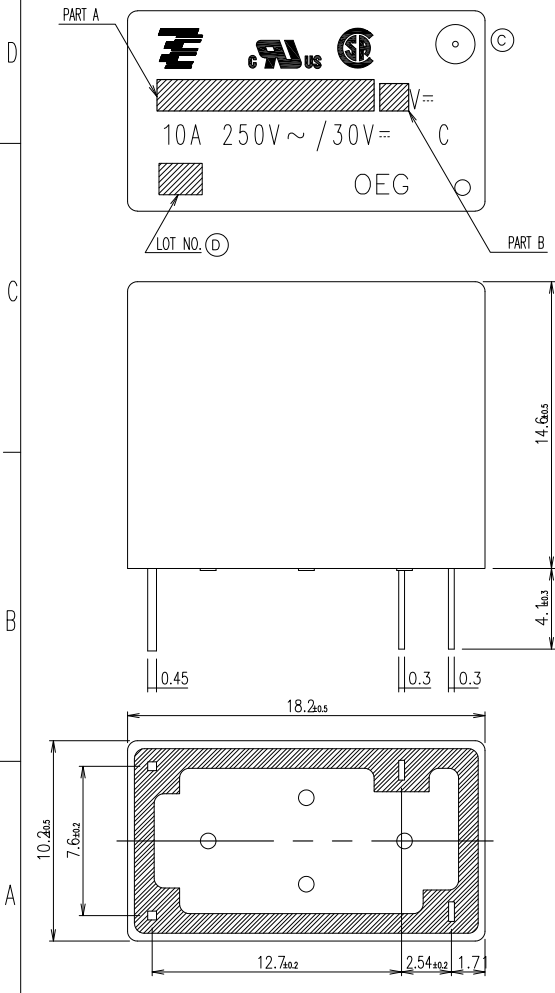


THIS DRAWING IS UNPUBLISHED.
 © COPYRIGHT

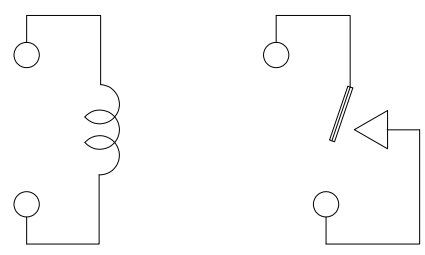
RELEASED FOR PUBLICATION
 ALL RIGHTS RESERVED.

LOC
 HB

REVISONS		DATE	DWN	APVD	
P	LTR	DESCRIPTION	DATE	DWN	APVD
	D1	REVISED PER ECO-11-005140	26MAR11	RK	HMR



NOTES:
 1. LOT NO. SYSTEM AS FOLLOWING:
 (D) (C) 017104
 WEEK:04
 YEAR :07



CONNECTION FIGURE

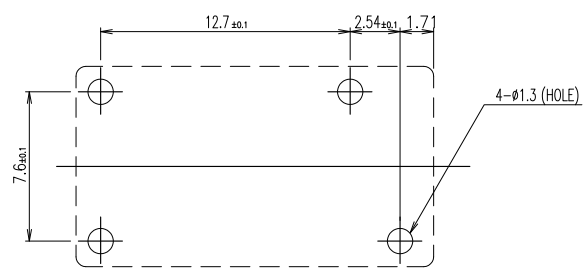


FIGURE FOR PRINTED CIRCUIT BOARD PROCESSING
 (BOTTOM VIEW)

DIMENSIONS: mm 	TOLERANCES UNLESS OTHERWISE SPECIFIED: 0 P/C ± 1 P/C ± 2 P/C ± 3 P/C ± 4 P/C ± 5 P/C ± 6 P/C ± 7 P/C ± 8 P/C ± 9 P/C ± 10 P/C ± 11 P/C ± 12 P/C ± 13 P/C ± 14 P/C ± 15 P/C ± 16 P/C ± 17 P/C ± 18 P/C ± 19 P/C ± 20 P/C ± 21 P/C ± 22 P/C ± 23 P/C ± 24 P/C ± 25 P/C ± 26 P/C ± 27 P/C ± 28 P/C ± 29 P/C ± 30 P/C ± 31 P/C ± 32 P/C ± 33 P/C ± 34 P/C ± 35 P/C ± 36 P/C ± 37 P/C ± 38 P/C ± 39 P/C ± 40 P/C ± 41 P/C ± 42 P/C ± 43 P/C ± 44 P/C ± 45 P/C ± 46 P/C ± 47 P/C ± 48 P/C ± 49 P/C ± 50 P/C ± 51 P/C ± 52 P/C ± 53 P/C ± 54 P/C ± 55 P/C ± 56 P/C ± 57 P/C ± 58 P/C ± 59 P/C ± 60 P/C ± 61 P/C ± 62 P/C ± 63 P/C ± 64 P/C ± 65 P/C ± 66 P/C ± 67 P/C ± 68 P/C ± 69 P/C ± 70 P/C ± 71 P/C ± 72 P/C ± 73 P/C ± 74 P/C ± 75 P/C ± 76 P/C ± 77 P/C ± 78 P/C ± 79 P/C ± 80 P/C ± 81 P/C ± 82 P/C ± 83 P/C ± 84 P/C ± 85 P/C ± 86 P/C ± 87 P/C ± 88 P/C ± 89 P/C ± 90 P/C ± 91 P/C ± 92 P/C ± 93 P/C ± 94 P/C ± 95 P/C ± 96 P/C ± 97 P/C ± 98 P/C ± 99 P/C ± 100 P/C ± 101 P/C ± 102 P/C ± 103 P/C ± 104 P/C ± 105 P/C ± 106 P/C ± 107 P/C ± 108 P/C ± 109 P/C ± 110 P/C ± 111 P/C ± 112 P/C ± 113 P/C ± 114 P/C ± 115 P/C ± 116 P/C ± 117 P/C ± 118 P/C ± 119 P/C ± 120 P/C ± 121 P/C ± 122 P/C ± 123 P/C ± 124 P/C ± 125 P/C ± 126 P/C ± 127 P/C ± 128 P/C ± 129 P/C ± 130 P/C ± 131 P/C ± 132 P/C ± 133 P/C ± 134 P/C ± 135 P/C ± 136 P/C ± 137 P/C ± 138 P/C ± 139 P/C ± 140 P/C ± 141 P/C ± 142 P/C ± 143 P/C ± 144 P/C ± 145 P/C ± 146 P/C ± 147 P/C ± 148 P/C ± 149 P/C ± 150 P/C ± 151 P/C ± 152 P/C ± 153 P/C ± 154 P/C ± 155 P/C ± 156 P/C ± 157 P/C ± 158 P/C ± 159 P/C ± 160 P/C ± 161 P/C ± 162 P/C ± 163 P/C ± 164 P/C ± 165 P/C ± 166 P/C ± 167 P/C ± 168 P/C ± 169 P/C ± 170 P/C ± 171 P/C ± 172 P/C ± 173 P/C ± 174 P/C ± 175 P/C ± 176 P/C ± 177 P/C ± 178 P/C ± 179 P/C ± 180 P/C ± 181 P/C ± 182 P/C ± 183 P/C ± 184 P/C ± 185 P/C ± 186 P/C ± 187 P/C ± 188 P/C ± 189 P/C ± 190 P/C ± 191 P/C ± 192 P/C ± 193 P/C ± 194 P/C ± 195 P/C ± 196 P/C ± 197 P/C ± 198 P/C ± 199 P/C ± 200 P/C ± 201 P/C ± 202 P/C ± 203 P/C ± 204 P/C ± 205 P/C ± 206 P/C ± 207 P/C ± 208 P/C ± 209 P/C ± 210 P/C ± 211 P/C ± 212 P/C ± 213 P/C ± 214 P/C ± 215 P/C ± 216 P/C ± 217 P/C ± 218 P/C ± 219 P/C ± 220 P/C ± 221 P/C ± 222 P/C ± 223 P/C ± 224 P/C ± 225 P/C ± 226 P/C ± 227 P/C ± 228 P/C ± 229 P/C ± 230 P/C ± 231 P/C ± 232 P/C ± 233 P/C ± 234 P/C ± 235 P/C ± 236 P/C ± 237 P/C ± 238 P/C ± 239 P/C ± 240 P/C ± 241 P/C ± 242 P/C ± 243 P/C ± 244 P/C ± 245 P/C ± 246 P/C ± 247 P/C ± 248 P/C ± 249 P/C ± 250 P/C ± 251 P/C ± 252 P/C ± 253 P/C ± 254 P/C ± 255 P/C ± 256 P/C ± 257 P/C ± 258 P/C ± 259 P/C ± 260 P/C ± 261 P/C ± 262 P/C ± 263 P/C ± 264 P/C ± 265 P/C ± 266 P/C ± 267 P/C ± 268 P/C ± 269 P/C ± 270 P/C ± 271 P/C ± 272 P/C ± 273 P/C ± 274 P/C ± 275 P/C ± 276 P/C ± 277 P/C ± 278 P/C ± 279 P/C ± 280 P/C ± 281 P/C ± 282 P/C ± 283 P/C ± 284 P/C ± 285 P/C ± 286 P/C ± 287 P/C ± 288 P/C ± 289 P/C ± 290 P/C ± 291 P/C ± 292 P/C ± 293 P/C ± 294 P/C ± 295 P/C ± 296 P/C ± 297 P/C ± 298 P/C ± 299 P/C ± 300 P/C ± 301 P/C ± 302 P/C ± 303 P/C ± 304 P/C ± 305 P/C ± 306 P/C ± 307 P/C ± 308 P/C ± 309 P/C ± 310 P/C ± 311 P/C ± 312 P/C ± 313 P/C ± 314 P/C ± 315 P/C ± 316 P/C ± 317 P/C ± 318 P/C ± 319 P/C ± 320 P/C ± 321 P/C ± 322 P/C ± 323 P/C ± 324 P/C ± 325 P/C ± 326 P/C ± 327 P/C ± 328 P/C ± 329 P/C ± 330 P/C ± 331 P/C ± 332 P/C ± 333 P/C ± 334 P/C ± 335 P/C ± 336 P/C ± 337 P/C ± 338 P/C ± 339 P/C ± 340 P/C ± 341 P/C ± 342 P/C ± 343 P/C ± 344 P/C ± 345 P/C ± 346 P/C ± 347 P/C ± 348 P/C ± 349 P/C ± 350 P/C ± 351 P/C ± 352 P/C ± 353 P/C ± 354 P/C ± 355 P/C ± 356 P/C ± 357 P/C ± 358 P/C ± 359 P/C ± 360 P/C ± 361 P/C ± 362 P/C ± 363 P/C ± 364 P/C ± 365 P/C ± 366 P/C ± 367 P/C ± 368 P/C ± 369 P/C ± 370 P/C ± 371 P/C ± 372 P/C ± 373 P/C ± 374 P/C ± 375 P/C ± 376 P/C ± 377 P/C ± 378 P/C ± 379 P/C ± 380 P/C ± 381 P/C ± 382 P/C ± 383 P/C ± 384 P/C ± 385 P/C ± 386 P/C ± 387 P/C ± 388 P/C ± 389 P/C ± 390 P/C ± 391 P/C ± 392 P/C ± 393 P/C ± 394 P/C ± 395 P/C ± 396 P/C ± 397 P/C ± 398 P/C ± 399 P/C ± 400 P/C ± 401 P/C ± 402 P/C ± 403 P/C ± 404 P/C ± 405 P/C ± 406 P/C ± 407 P/C ± 408 P/C ± 409 P/C ± 410 P/C ± 411 P/C ± 412 P/C ± 413 P/C ± 414 P/C ± 415 P/C ± 416 P/C ± 417 P/C ± 418 P/C ± 419 P/C ± 420 P/C ± 421 P/C ± 422 P/C ± 423 P/C ± 424 P/C ± 425 P/C ± 426 P/C ± 427 P/C ± 428 P/C ± 429 P/C ± 430 P/C ± 431 P/C ± 432 P/C ± 433 P/C ± 434 P/C ± 435 P/C ± 436 P/C ± 437 P/C ± 438 P/C ± 439 P/C ± 440 P/C ± 441 P/C ± 442 P/C ± 443 P/C ± 444 P/C ± 445 P/C ± 446 P/C ± 447 P/C ± 448 P/C ± 449 P/C ± 450 P/C ± 451 P/C ± 452 P/C ± 453 P/C ± 454 P/C ± 455 P/C ± 456 P/C ± 457 P/C ± 458 P/C ± 459 P/C ± 460 P/C ± 461 P/C ± 462 P/C ± 463 P/C ± 464 P/C ± 465 P/C ± 466 P/C ± 467 P/C ± 468 P/C ± 469 P/C ± 470 P/C ± 471 P/C ± 472 P/C ± 473 P/C ± 474 P/C ± 475 P/C ± 476 P/C ± 477 P/C ± 478 P/C ± 479 P/C ± 480 P/C ± 481 P/C ± 482 P/C ± 483 P/C ± 484 P/C ± 485 P/C ± 486 P/C ± 487 P/C ± 488 P/C ± 489 P/C ± 490 P/C ± 491 P/C ± 492 P/C ± 493 P/C ± 494 P/C ± 495 P/C ± 496 P/C ± 497 P/C ± 498 P/C ± 499 P/C ± 500 P/C ± 501 P/C ± 502 P/C ± 503 P/C ± 504 P/C ± 505 P/C ± 506 P/C ± 507 P/C ± 508 P/C ± 509 P/C ± 510 P/C ± 511 P/C ± 512 P/C ± 513 P/C ± 514 P/C ± 515 P/C ± 516 P/C ± 517 P/C ± 518 P/C ± 519 P/C ± 520 P/C ± 521 P/C ± 522 P/C ± 523 P/C ± 524 P/C ± 525 P/C ± 526 P/C ± 527 P/C ± 528 P/C ± 529 P/C ± 530 P/C ± 531 P/C ± 532 P/C ± 533 P/C ± 534 P/C ± 535 P/C ± 536 P/C ± 537 P/C ± 538 P/C ± 539 P/C ± 540 P/C ± 541 P/C ± 542 P/C ± 543 P/C ± 544 P/C ± 545 P/C ± 546 P/C ± 547 P/C ± 548 P/C ± 549 P/C ± 550 P/C ± 551 P/C ± 552 P/C ± 553 P/C ± 554 P/C ± 555 P/C ± 556 P/C ± 557 P/C ± 558 P/C ± 559 P/C ± 560 P/C ± 561 P/C ± 562 P/C ± 563 P/C ± 564 P/C ± 565 P/C ± 566 P/C ± 567 P/C ± 568 P/C ± 569 P/C ± 570 P/C ± 571 P/C ± 572 P/C ± 573 P/C ± 574 P/C ± 575 P/C ± 576 P/C ± 577 P/C ± 578 P/C ± 579 P/C ± 580 P/C ± 581 P/C ± 582 P/C ± 583 P/C ± 584 P/C ± 585 P/C ± 586 P/C ± 587 P/C ± 588 P/C ± 589 P/C ± 590 P/C ± 591 P/C ± 592 P/C ± 593 P/C ± 594 P/C ± 595 P/C ± 596 P/C ± 597 P/C ± 598 P/C ± 599 P/C ± 600 P/C ± 601 P/C ± 602 P/C ± 603 P/C ± 604 P/C ± 605 P/C ± 606 P/C ± 607 P/C ± 608 P/C ± 609 P/C ± 610 P/C ± 611 P/C ± 612 P/C ± 613 P/C ± 614 P/C ± 615 P/C ± 616 P/C ± 617 P/C ± 618 P/C ± 619 P/C ± 620 P/C ± 621 P/C ± 622 P/C ± 623 P/C ± 624 P/C ± 625 P/C ± 626 P/C ± 627 P/C ± 628 P/C ± 629 P/C ± 630 P/C ± 631 P/C ± 632 P/C ± 633 P/C ± 634 P/C ± 635 P/C ± 636 P/C ± 637 P/C ± 638 P/C ± 639 P/C ± 640 P/C ± 641 P/C ± 642 P/C ± 643 P/C ± 644 P/C ± 645 P/C ± 646 P/C ± 647 P/C ± 648 P/C ± 649 P/C ± 650 P/C ± 651 P/C ± 652 P/C ± 653 P/C ± 654 P/C ± 655 P/C ± 656 P/C ± 657 P/C ± 658 P/C ± 659 P/C ± 660 P/C ± 661 P/C ± 662 P/C ± 663 P/C ± 664 P/C ± 665 P/C ± 666 P/C ± 667 P/C ± 668 P/C ± 669 P/C ± 670 P/C ± 671 P/C ± 672 P/C ± 673 P/C ± 674 P/C ± 675 P/C ± 676 P/C ± 677 P/C ± 678 P/C ± 679 P/C ± 680 P/C ± 681 P/C ± 682 P/C ± 683 P/C ± 684 P/C ± 685 P/C ± 686 P/C ± 687 P/C ± 688 P/C ± 689 P/C ± 690 P/C ± 691 P/C ± 692 P/C ± 693 P/C ± 694 P/C ± 695 P/C ± 696 P/C ± 697 P/C ± 698 P/C ± 699 P/C ± 700 P/C ± 701 P/C ± 702 P/C ± 703 P/C ± 704 P/C ± 705 P/C ± 706 P/C ± 707 P/C ± 708 P/C ± 709 P/C ± 710 P/C ± 711 P/C ± 712 P/C ± 713 P/C ± 714 P/C ± 715 P/C ± 716 P/C ± 717 P/C ± 718 P/C ± 719 P/C ± 720 P/C ± 721 P/C ± 722 P/C ± 723 P/C ± 724 P/C ± 725 P/C ± 726 P/C ± 727 P/C ± 728 P/C ± 729 P/C ± 730 P/C ± 731 P/C ± 732 P/C ± 733 P/C ± 734 P/C ± 735 P/C ± 736 P/C ± 737 P/C ± 738 P/C ± 739 P/C ± 740 P/C ± 741 P/C ± 742 P/C ± 743 P/C ± 744 P/C ± 745 P/C ± 746 P/C ± 747 P/C ± 748 P/C ± 749 P/C ± 750 P/C ± 751 P/C ± 752 P/C ± 753 P/C ± 754 P/C ± 755 P/C ± 756 P/C ± 757 P/C ± 758 P/C ± 759 P/C ± 760 P/C ± 761 P/C ± 762 P/C ± 763 P/C ± 764 P/C ± 765 P/C ± 766 P/C ± 767 P/C ± 768 P/C ± 769 P/C ± 770 P/C ± 771 P/C ± 772 P/C ± 773 P/C ± 774 P/C ± 775 P/C ± 776 P/C ± 777 P/C ± 778 P/C ± 779 P/C ± 780 P/C ± 781 P/C ± 782 P/C ± 783 P/C ± 784 P/C ± 785 P/C ± 786 P/C ± 787 P/C ± 788 P/C ± 789 P/C ± 790 P/C ± 791 P/C ± 792 P/C ± 793 P/C ± 794 P/C ± 795 P/C ± 796 P/C ± 797 P/C ± 798 P/C ± 799 P/C ± 800 P/C ± 801 P/C ± 802 P/C ± 803 P/C ± 804 P/C ± 805 P/C ± 806 P/C ± 807 P/C ± 808 P/C ± 809 P/C ± 810 P/C ± 811 P/C ± 812 P/C ± 813 P/C ± 814 P/C ± 815 P/C ± 816 P/C ± 817 P/C ± 818 P/C ± 819 P/C ± 820 P/C ± 821 P/C ± 822 P/C ± 823 P/C ± 824 P/C ± 825 P/C ± 826 P/C ± 827 P/C ± 828 P/C ± 829 P/C ± 830 P/C ± 831 P/C ± 832 P/C ± 833 P/C ± 834 P/C ± 835 P/C ± 836 P/C ± 837 P/C ± 838 P/C ± 839 P/C ± 840 P/C ± 841 P/C ± 842 P/C ± 843 P/C ± 844 P/C ± 845 P/C ± 846 P/C ± 847 P/C ± 848 P/C ± 849 P/C ± 850 P/C ± 851 P/C ± 852 P/C ± 853 P/C ± 854 P/C ± 855 P/C ± 856 P/C ± 857 P/C ± 858 P/C ± 859 P/C ± 860 P/C ± 861 P/C ± 862 P/C ± 863 P/C ± 864 P/C ± 865 P/C ± 866 P/C ± 867 P/C ± 868 P/C ± 869 P/C ± 870 P/C ± 871 P/C ± 872 P/C ± 873 P/C ± 874 P/C ± 875 P/C ± 876 P/C ± 877 P/C ± 878 P/C ± 879 P/C ± 880 P/C ± 881 P/C ± 882 P/C ± 883 P/C ± 884 P/C ± 885 P/C ± 886 P/C ± 887 P/C ± 888 P/C ± 889 P/C ± 890 P/C ± 891 P/C ± 892 P/C ± 893 P/C ± 894 P/C ± 895 P/C ± 896 P/C ± 897 P/C ± 898 P/C ± 899 P/C ± 900 P/C ± 901 P/C ± 902 P/C ± 903 P/C ± 904 P/C ± 905 P/C ± 906 P/C ± 907 P/C ± 908 P/C ± 909 P/C ± 910 P/C ± 911 P/C ± 912 P/C ± 913 P/C ± 914 P/C ± 915 P/C ± 916 P/C ± 917 P/C ± 918 P/C ± 919 P/C ± 920 P/C ± 921 P/C ± 922 P/C ± 923 P/C ± 924 P/C ± 925 P/C ± 926 P/C ± 927 P/C ± 928 P/C ± 929 P/C ± 930 P/C ± 931 P/C ± 932 P/C ± 933 P/C ± 934 P/C ± 935 P/C ± 936 P/C ± 937 P/C ± 938 P/C ± 939 P/C ± 940 P/C ± 941 P/C ± 942 P/C ±<
-----------------------	--

THIS DRAWING IS UNPUBLISHED.

RELEASED FOR PUBLICATION

© COPYRIGHT

ALL RIGHTS RESERVED.

LOC
HB

DIST

REVISIONS

P	LTR	DESCRIPTION	ECN	DATE	DWN	APVD

1461103-3	OJE-SS-148HM, 000	48V	OJE-SS-148HM	h
6-1419128-4	OJE-SS-124HM, 000	24V	OJE-SS-124HM	g
1461103-2	OJE-SS-118HM, 000	18V	OJE-SS-118HM	f
4-1419128-3	OJE-SS-112HM, 000	12V	OJE-SS-112HM	e
3-1419128-5	OJE-SS-109HM, 000	9V	OJE-SS-109HM	d
3-1419128-2	OJE-SS-106HM, 000	6V	OJE-SS-106HM	c
2-1419128-9	OJE-SS-105HM, 000	5V	OJE-SS-105HM	b
1461103-1	OJE-SS-103HM, 000	3V	OJE-SS-103HM	a
PART NO	DESCRIPTION	PART B	PART A	TYPE

		EPOXY RESIN	SEAL (BASE & BOBBIN)	15
		JUEN	MAGNETIC WIRE	14
94V-0		P.B.T	CASE	13
94V-0		P.B.T	BASE	12
94V-0		P.B.T	BOBBIN	11
	SOLDER DIP	C.P WIRE	COIL TERMINAL	10
94V-0			CARD	9
		Ag ALLOY	MOVABLE CONTACT	8
		Ag	NO CONTACT	7
		STEEL	HINGE SPRING	6
	SOLDER DIP	PBP	NO TERMINAL	5
	SOLDER DIP	Cu ALLOY	MOVABLE SPRING	4
	NIP	STEEL	CORE	3
	NIP	STEEL	ARMATURE	2
	NIP	STEEL	YOKE	1
INCOMBUSTIBILITY	TREATMENT	MATERIAL	DESCRIPTION	ITEM

	DWN		STE TE Connectivity
	CHK		
	APVD		
	PRODUCT SPEC		
	APPLICATION SPEC		NAME OJE-SS-HM SPEC,000
	WEIGHT		SIZE A3
	CUSTOMER DRAWING		CAGE CODE 00779
			DRAWING NO 1461103
			RESTRICTED TO
			SCALE
			SHEET 2 OF 2
			REV D1

	DIMENSIONS:	
	TOLERANCES UNLESS OTHERWISE SPECIFIED:	
	0 P.L.C	+
	1 P.L.C	+
	2 P.L.C	+
	3 P.L.C	+
	4 P.L.C	+
	APPROX	+
	FINISH	+++++
	MATERIAL	

