

TS15P01G - TS15P07G

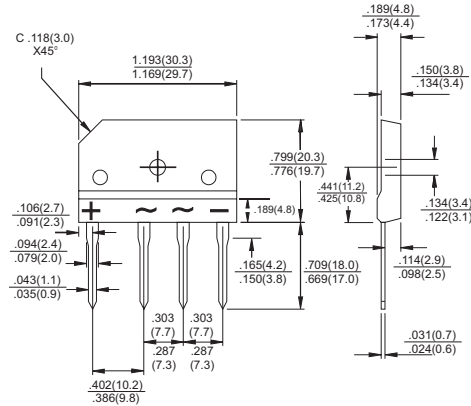
Single Phase 15.0 AMPS.
Glass Passivated Bridge Rectifiers

TS-6P



Features

- ◇ UL Recognized File # E-96005
- ◇ Glass passivated junction
- ◇ Ideal for printed circuit board
- ◇ Reliable low cost construction
- ◇ Plastic material has Underwriters Laboratory Flammability Classification 94V-0
- ◇ Surge overload rating to 200 amperes peak
- ◇ High case dielectric strength of 2000 V_{RMS}
- ◇ Isolated voltage from case to lead over 2500 volts



Mechanical Data

- ◇ Case: Molded plastic
- ◇ Terminals: Leads solderable per MIL-STD-750, Method 2026
- ◇ Weight: 0.3 ounce, 8 grams
- ◇ Mounting torque: 8.17 in. lbs. max.

Dimensions in inches and (millimeters)

Maximum Ratings and Electrical Characteristics

Rating at 25 °C ambient temperature unless otherwise specified.

Single phase, half wave, 60 Hz, resistive or inductive load.

For capacitive load, derate current by 20%

Type Number	Symbol	TS15P01G	TS15P02G	TS15P03G	TS15P04G	TS15P05G	TS15P06G	TS15P07G	Units
Maximum Recurrent Peak Reverse Voltage	V _{RRM}	50	100	200	400	600	800	1000	V
Maximum RMS Voltage	V _{RMS}	35	70	140	280	420	560	700	V
Maximum DC Blocking Voltage	V _{DC}	50	100	200	400	600	800	1000	V
Maximum Average Forward Rectified Current See Fig. 1	I <sub(av)< sub=""></sub(av)<>	15.0							A
Peak Forward Surge Current, 8.3 ms Single Half Sine-wave Superimposed on Rated Load (JEDEC method)	I _{FSM}	240							A
Maximum Instantaneous Forward Voltage @ 7.5A @ 15A	V _F	1.0 1.1							V
Maximum DC Reverse Current @ T _A =25 °C at Rated DC Blocking Voltage @ T _A =125 °C	I _R	10.0 500							uA
Typical Thermal Resistance (Note)	R _{θJC}	0.8							°C/W
Operating Temperature Range	T _J	-55 to +150							°C
Storage Temperature Range	T _{STG}	-55 to + 150							°C

Note: Thermal resistance from Junction to Case with Device Mounted on 300mm x 300mm x 1.6mm Cu Plate Heatsink.

RATINGS AND CHARACTERISTIC CURVES (TS15P01G THRU TS15P07G)

