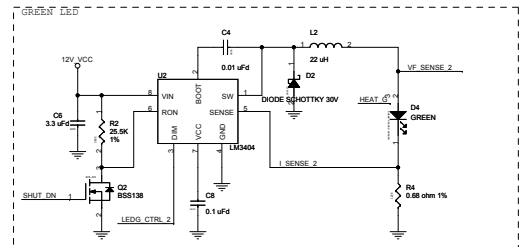
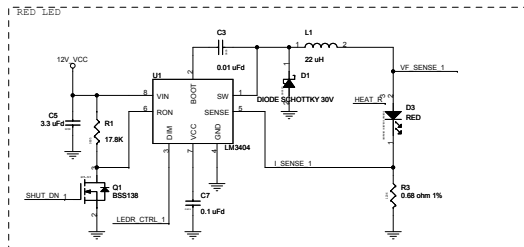
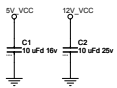
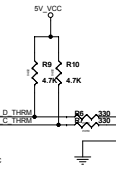
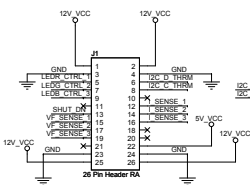


LED Daughter Card

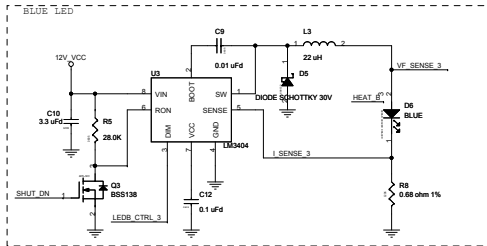


Header (right angle) for connecting daughter card to the main board.



Thermistor should be placed on the same side of the board as the LEDs, and should be placed in the center between the three LEDs.

I2C slave address hard coded to 0x49 hex. The MSB of the address is set internally by the LM75. The LSB is set by A2-A0.



OSRAM PDCR-9442 Rev 2  
DAUGHTER 121R-44200 Rev 2  
CARD

| CYPRESS SEMICONDUCTOR © 2007 |                                  |              |
|------------------------------|----------------------------------|--------------|
| File                         | CY2865-ColorMx-GNO Daughter Card |              |
| Doc                          | Document Number                  | Rev          |
| C                            | REF-1494A                        | 1            |
| Date                         | Friday, April 01, 2006           | Sheet 1 of 3 |