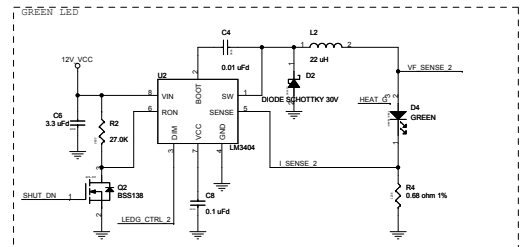
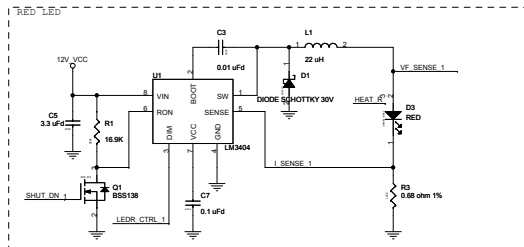
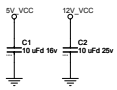
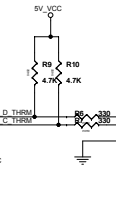
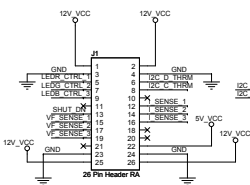


LED Daughter Card

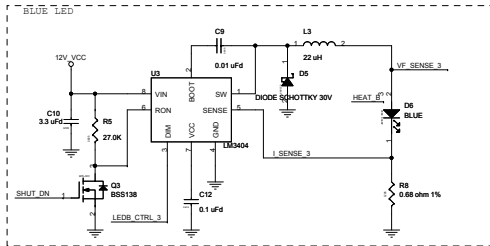


Header (right angle) for connecting daughter card to the main board.



Thermistor should be placed on the same side of the board as the LEDs, and should be placed in the center between the three LEDs.

I2C slave address hard coded to 0x49 hex. The MSB of the address is set internally by the LM75. The LSB is set by A2-A0.



CREE PDCR-9444 Rev **
DAUGHTER 121R-44400 Rev **
CARD

CYPRESS SEMICONDUCTOR © 2007	
File	CY2865-Columbi-ChO Cree Daughter Card
Doc	Document Number
C	REF-14444
Date	Friday, September 12, 2008
Sheet	1 of 3