

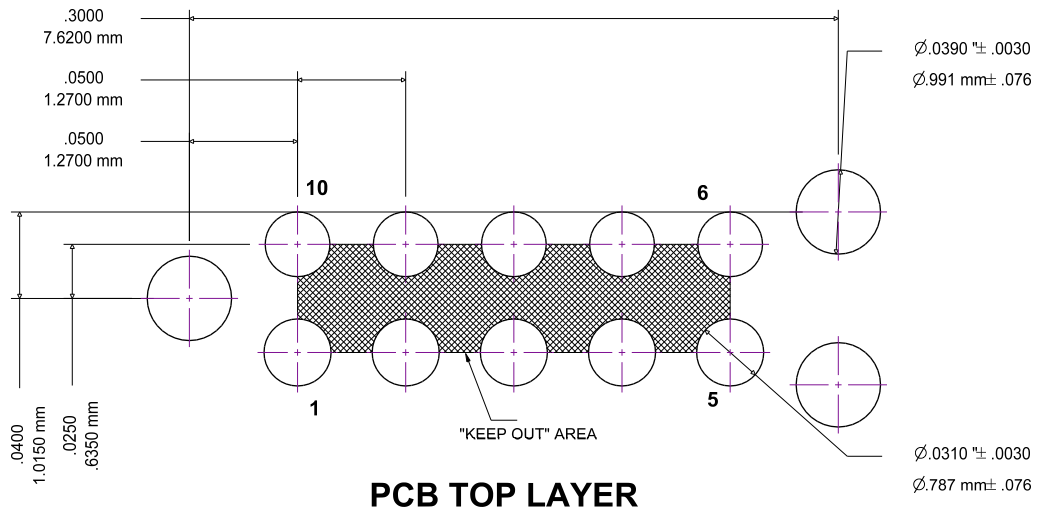
**Notes:**

- 1. No tracks or vias in the shaded "KEEP OUT" AREA.
- 2. No other track or signal within 0.020" of any contact pad.
- 3. Do not allow solder paste on the contact pads. It is essential to eliminate any hole in the solder paste-mask (solder stencil) layer. If this is not possible make the contact pads thru-hole with finished hole size of 0.008" or less.
- 4. To avoid ordering confusion, please specify DNL in your BOM.

**FOOTPRINT FOR TC2050-IDC-430 PLUG OF NAILS(TM) CABLE FOR MSP430**

REV	TC2050-IDC-430-FP	11/29/10	MS
-----	-------------------	----------	----

- 5. The TC2050-CLIP board can attach to the three alignment pins from underneath the PCB to temporarily retain the cable in place.



14-pin Ribbon Pin #	TC2050-IDC-430 Pin #
1	1
2	2
...	...
8	8
9	9
10	(NC)
11	10
12	(NC)
13	(NC)
14	(NC)

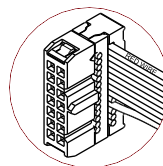
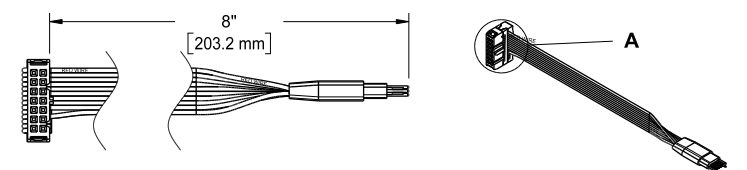
SIZE <b>A</b>	FSCM NO.	DWG NO.	<b>FOOTPRINT FOR TC2050-IDC-430-FP</b>	REV <b>A</b>
SCALE 10:1	www.TAG-CONNECT.com		SHEET 1 OF 3	

# TC2050-IDC-430-NL PLUG-OF-NAILS™ CABLE FOR MSP430

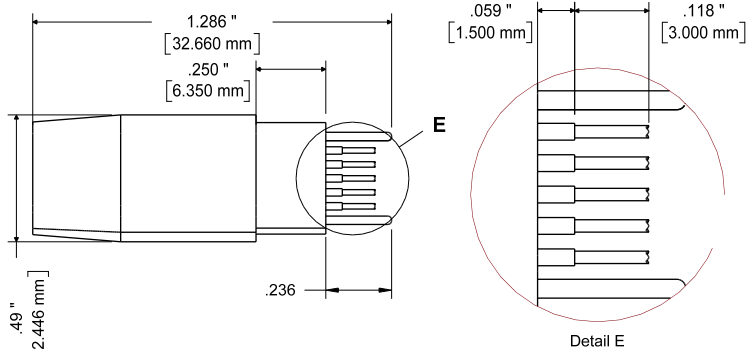
ZONE	REV	TC2050-IDC-430-NL	11/29/10	MS
------	-----	-------------------	----------	----

NOTE:  
Dimensions subject to change

For use with TI MSP-FET and compatible MSP430 JTAG debugger

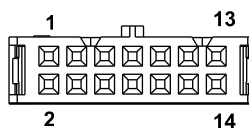


Detail A

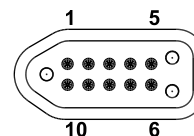


Detail E

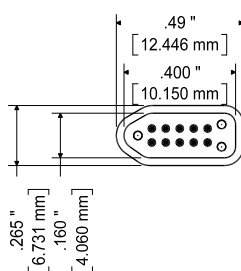
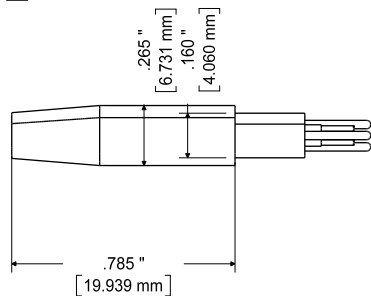
END VIEW  
2x7 .1" IDC CONNECTOR



END VIEW  
10 PIN TAG-CONNECT

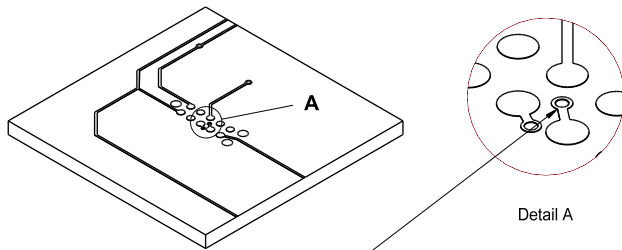


14-pin Ribbon Pin #	TC2050-IDC-430 Pin #
1	1
2	2
...	...
8	8
9	9
10	(NC)
11	10
12	(NC)
13	(NC)
14	(NC)

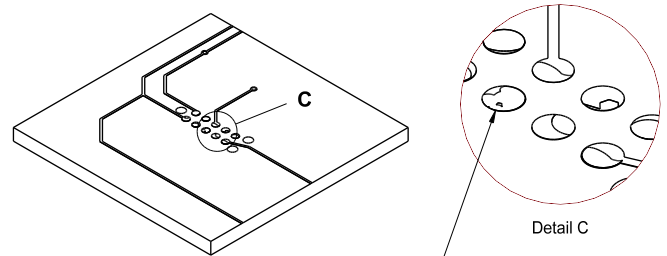


SIZE <b>A</b>	FSCM NO.	DWG NO. <b>TC2050-IDC-430-NL</b>	REV <b>A</b>
SCALE	www.TAG-CONNECT.com		SHEET 2 OF 3

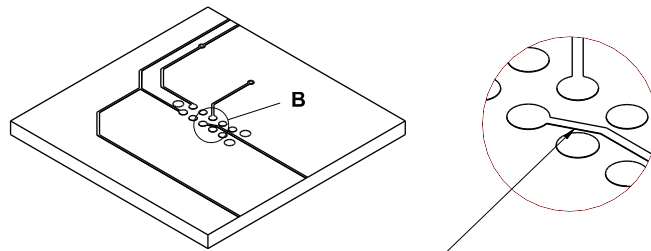
# Layout Problems to Avoid



Vias between contact pads



Do not deposit solder paste on contact pads. View Solder Paste Mask (Solder Stencil) layer in pad-stack and eliminate any hole.



Traces less than .02" away from contact pad or in "KEEP OUT" area