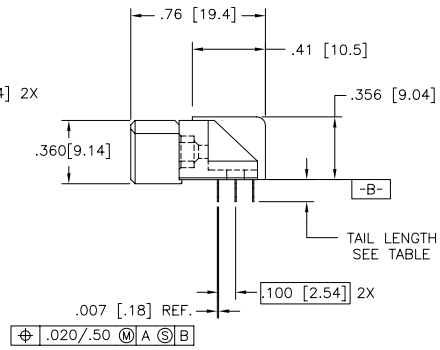
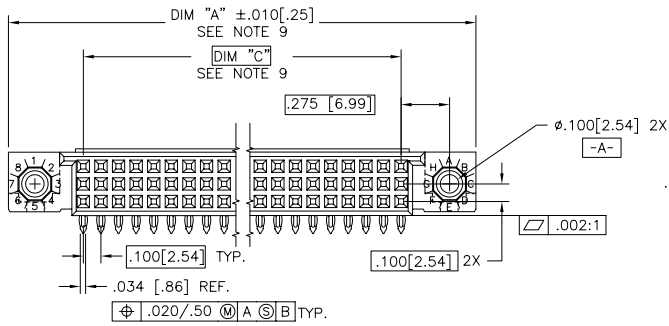
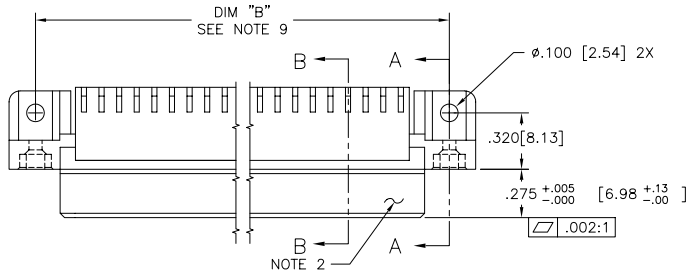


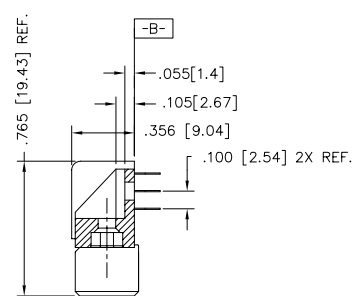
PRODUCT NUMBER
SEE TABLE



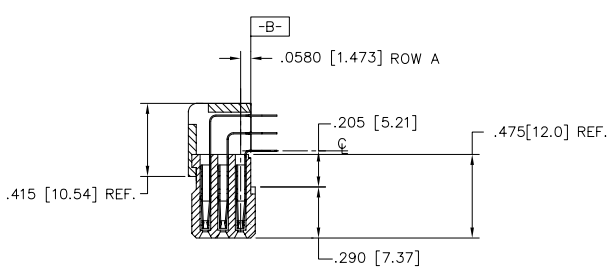
mat'l. code	SEE NOTE 4	surface	ISO 1302 ✓	tolerance	ISO 406	projection	product family
itr	ecn no dr	date	tolerances unless otherwise specified		ISO 1101		HPC
K	V90001	HTB	2/15/99	angles	.xxx±.01/.3	INCH/MM	title
L	V00288	JWS	1/31/00	linear	.xxx±.005/.13	scale 1:1	3 ROW R/A RECEIPT. PRESS FIT, 0 GUIDE PIN
M	V10826	JRW	2/7/01	0°±2'	.xxxx±.0020/.051		dwg no
N	V05-0511	DAI	8/15/05	dr	G.PETERS	6/19/93	sheet 1 of 4 size
P	V05-1054	HTB	11/17/05	enrg	S.CLARK	6/19/93	50645
R	M06-0255	MHT	7/06/06	chr	S.CLARK	6/19/93	A3
S	M07-0099	AGS	2/08/07	appd	S.CLARK	6/19/93	type Product Customer Drawing
sheet	revision	S	S	S	S		
index	sheet	1	2	3	4		

PDM: Rev:S STATUS:Released Printed: Feb 20, 2010

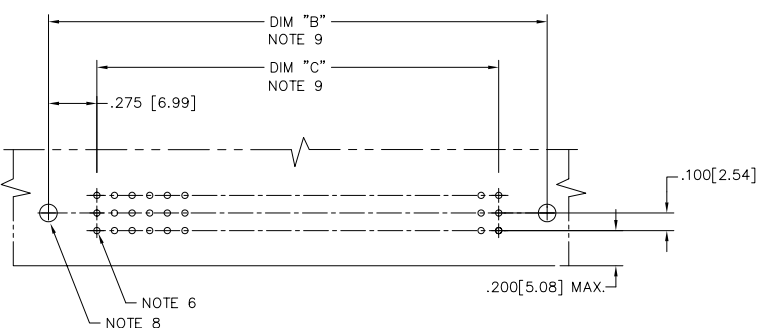
PRODUCT NUMBER
SEE TABLE



SECTION A-A



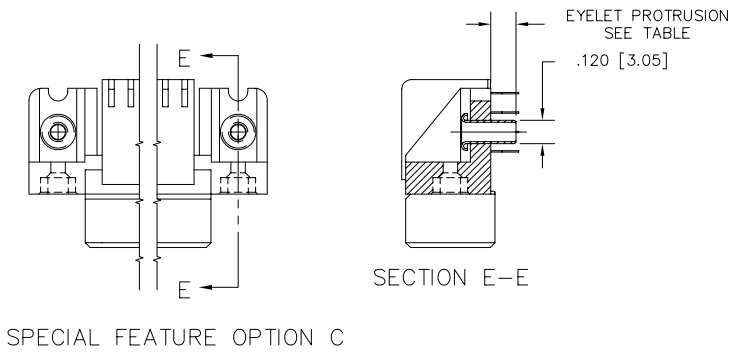
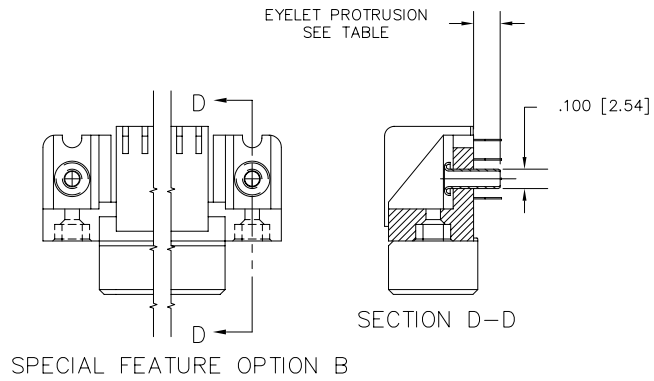
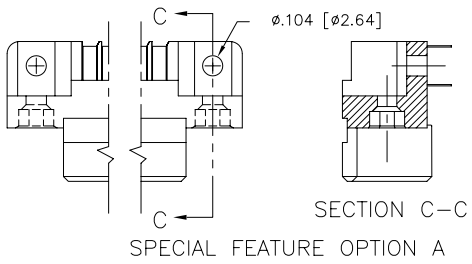
SECTION B-B



RECOMMENDED PCB LAYOUT
(ALL HOLES LOCATED ON .100 [2.54] GRID
UNLESS OTHERWISE SHOWN.)

mat'l. code SEE NOTE 4		surface ISO 1302 ✓	tolerance ISO 406 ISO 1101	projection ASME Y14.5	product family HPC
ltr	ecn no	dr	date	INCH/MM	title 3 ROW R/A RECEPT. PRESS FIT, 0 GUIDE PIN
S				scale 1:1	dwg no 50645
					sheet 2 of 4 size A3
					type Product Customer Drawing
sheet index	revision sheet				

PRODUCT NUMBER
SEE TABLE



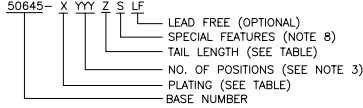
mat'l. code SEE NOTE 4	surface ISO 1302 ✓	tolerance ISO 406 ISO 1101	projection INCH/MM	product family HPC
ltr S	ecn no	dr date	angles linear 0°±2'	tolerances unless otherwise specified XXX±.01/.3 XXXX±.005/.13 XXXXX±.0020/.051
			scale 1:1	title 3 ROW R/A RECEPT. PRESS FIT, 0 GUIDE PIN
		dr G.PETERS 6/19/93	FCJ	dwg no 50645
		enrg S.CLARK 6/19/93		sheet 3 of 4 size A3
		chr S.CLARK 6/19/93		type Product Customer Drawing
sheet index	revision sheet			

PDM: Rev:S STATUS:Released Printed: Feb 20, 2010

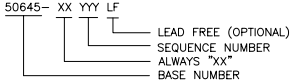
PRODUCT NUMBER NOTE 1	NUMBER OF POSITIONS NOTE 3	TAIL LENGTH ±.010/0.25	SPECIAL FEATURES SEE NOTE 8	SOLDER TAIL PLATING	CONTACT PLATING	EYELET PROTRUSION
50645-1YYYE	YYY	.125/3.18	NONE	TIN-LEAD	30u"/.76u Au	N/A
50645-1YYYELF	YYY	.125/3.18	NONE	TIN	30u"/.76u GXT	N/A
50645-1YYYEA	YYY	.125/3.18	"A"	TIN-LEAD	30u"/.76u Au	N/A
50645-1YYYEALF	YYY	.125/3.18	"A"	TIN	30u"/.76u GXT	N/A
50645-1YYYEB	YYY	.125/3.18	"B"	TIN-LEAD	30u"/.76u Au	.137/3.48
50645-1YYYEBLF	YYY	.125/3.18	"B"	TIN	30u"/.76u GXT	.137/3.48
50645-1YYYEC	YYY	.125/3.18	"C"	TIN-LEAD	30u"/.76u Au	.115/2.92
50645-1YYYECLF	YYY	.125/3.18	"C"	TIN	30u"/.76u GXT	.115/2.92
50645-1YYYF	YYY	.145/3.68	NONE	TIN-LEAD	30u"/.76u Au	N/A
50645-1YYYFLF	YYY	.145/3.68	NONE	TIN	30u"/.76u GXT	N/A
50645-1YYYFA	YYY	.145/3.68	"A"	TIN-LEAD	30u"/.76u Au	N/A
50645-1YYYFALF	YYY	.145/3.68	"A"	TIN	30u"/.76u GXT	N/A
50645-1YYYFC	YYY	.145/3.68	"C"	TIN-LEAD	30u"/.76u Au	.170/4.32
50645-1YYYCLF	YYY	.145/3.68	"C"	TIN	30u"/.76u GXT	.170/4.32

NOTES:

① PRODUCT NUMBERING CODE



PRODUCT NUMBERING CODE FOR SELECT LOAD



② MANUFACTURE'S LOGO, PART NUMBER, AND LOT CODE TO APPEAR ON THIS SURFACE.

③ THIS PRODUCT IS CONFIGURED IN SIZES OF 6 THRU 80 COLUMNS IN INCREMENTS OF ONE, I.E. 6, 7, 8, 9,79, 80.

④ MATERIAL: PRESS BLOCK - HIGH TEMP THERMOPLASTIC HOUSING; GLASS AND MINERAL FILLED HIGH TEMPERATURE THERMOPLASTIC, FLAME RETARDANT PER UL94V-0. COLOR-BLACK CONTACT: BeCu

5. PLATING:
CONTACT AREA: 30u"/0.76 μm Au OR 30u"/0.76μm GXT (FOR LEAD-FREE OPTION)
TAILS: EITHER TIN OR TIN LEAD, SEE TABLE.

⑥ DRILLED HOLE DIA OF .0453±.0010 [1.151±0.025] FINISHED TO .0400±.0030 [1.016±0.076] BY PLATING SnPb OR OTHER PLATING .0003 [0.008] TO .0006 [0.015] THICK WITH A COPPER UNDERPLATE AS NEEDED.

7. INFORMATION DOCUMENT: FOR PCB STAY-AWAY ZONE, SEE TA-0954.

⑧ SPECIAL FEATURES:

- = IF NO SPECIAL FEATURE CODE IS SELECTED, CONNECTOR WILL APPEAR AS SHOWN. PCB MOUNTING HOLE DIMENSION TO BE $\phi.120\pm.003$ [3.05±0.07]

"A" = IF SPECIFIED, CONNECTOR WILL APPEAR AS SHOWN ON SHEET 3. PCB MOUNTING HOLE DIMENSION TO BE $\phi.100\pm.003$ [2.54±0.07].

"B" = IF SPECIFIED, CONNECTOR WILL HAVE PRE-INSTALLED EYELET FOR P.C.B. ATTACHMENT IN A $\phi.100\pm.003$ [2.54±0.07] MOUNTING HOLE. SEE SHEET 3. (AVAILABLE IN "E" TAIL LENGTH. ONLY).

"C" = IF SPECIFIED, CONNECTOR WILL HAVE PRE-INSTALLED EYELET FOR P.C.B. ATTACHMENT IN A $\phi.120\pm.003$ [3.05±0.07] MOUNTING HOLE. SEE SHEET 3.

⑨ DIMENSION "A" CALCULATION = $.100$ (2.54) X NO. OF COLUMNS +.75 (19.1)
DIMENSION "B" CALCULATION = $.100$ (2.54) X NO. OF COLUMNS +.450 (11.43)
DIMENSION "C" CALCULATION = $.100$ (2.54) X NO. OF COLUMNS - .100 (2.54)

10. ALL POSITIONS ARE LOADED EXCEPT FOR -XXYYY ASSEMBLIES WHICH HAVE SELECTIVE LOADING.

11. THIS PRODUCT (WITH "LF" SUFFIX) MEETS EUROPEAN UNION DIRECTIVES AND OTHER COUNTRY REGULATIONS AS DESCRIBED IN GS-22-008.

12. THIS HOUSING WILL WITHSTAND EXPOSURE TO 260°C PEAK TEMPERATURE FOR 10-30 SECONDS IN A CONVECTION, INFRA-RED OR VAPOR PHASE REFLOW OVEN.

mat'l. code SEE NOTE 4		surface ISO 1302 ✓	tolerance ISO 406 ISO 1101	projection	product family HPC
ltr	ecn no/dr	date	tolerances unless otherwise specified	INCH/MM	title 3 ROW R/A RECEPT. PRESS FIT, 0 GUIDE PIN
S			angles linear XXX±.01/.3 ...XXX±.005/.13 0'±2' XXXX±.0020/.051		
dr	G.PETERS	6/19/93	scale 1:1	FCJ	sheet4 of 4 size 50645 A3 type Product Customer Drawing
enrg	S.CLARK	6/19/93			
chr	S.CLARK	6/19/93			
appd	S.CLARK	6/19/93			
sheet index	revision sheet				