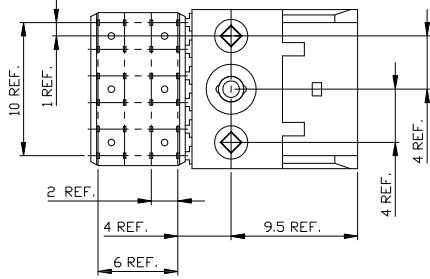
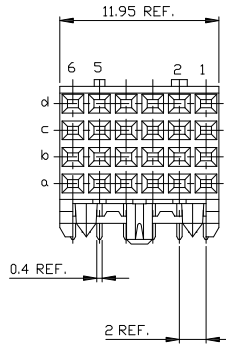
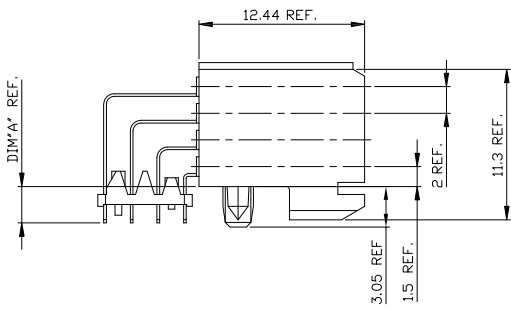
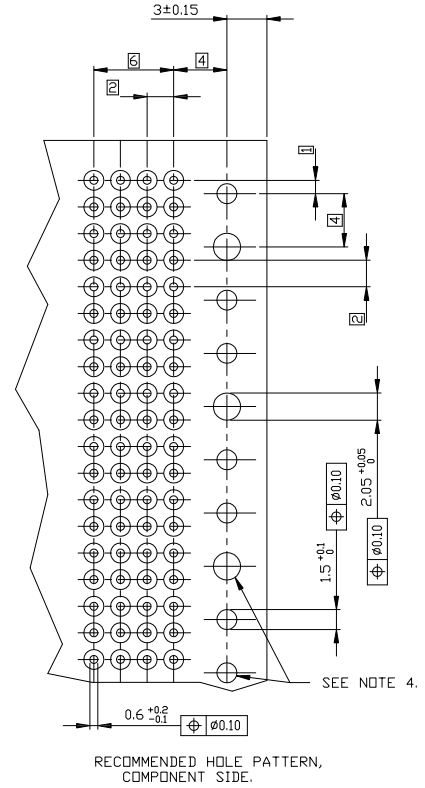
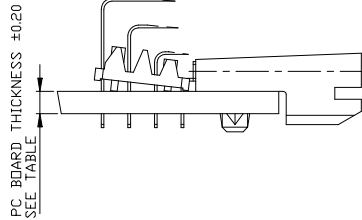


PC BOARD VERSIONS		
PRODUCTNR	PCB THICKNESS	DIM'A*
89035-X01	1,6	2,90
89035-X11	2,4	3,53
89035-X01LF	1,6	2,90
89035-X11LF	2,4	3,53



PRODUCT AFTER PC BOARD APPLICATION.



SEE NOTE 4.

RECOMMENDED HOLE PATTERN, COMPONENT SIDE.

NOTES:

- BODY MAT'L: LIQUID CRYSTAL POLYMER 30% GLASS
- FLAME RETARDANT ACC. UL 94-V0
- TERMINAL MATERIAL: PHOSPHOR BRONZE.
- PLATING SOLDER TAILS 2-8 μm SnPb 90-97 OR 2-8 μm PURE Sn FOR LEAD FREE.
- INDICATED HOLES ARE UNPLATED.
- PRODUCT MARKING: PART NUMBER & BATCH ID.
- THIS PRODUCT MEETS EUROPEAN UNION DIRECTIVES AND OTHER COUNTRY REGULATIONS AS DESCRIBED IN GS-22-008.
- THE HOUSING WILL WITHSTAND EXPOSURE TO 260DEGREE PEAK TEMPERATURE FOR 10 SECONDS IN A WAVE SOLDER APPLICATION.

PLATING CONTACT AREA:

DASH NR:	PERFORMANCE LEVEL
-1YY/1YYLF	TELCORDIA CO
-2YY/2YYLF	CUSTOMER SPECIAL
-3YY/3YYLF	CUSTOMER SPECIAL

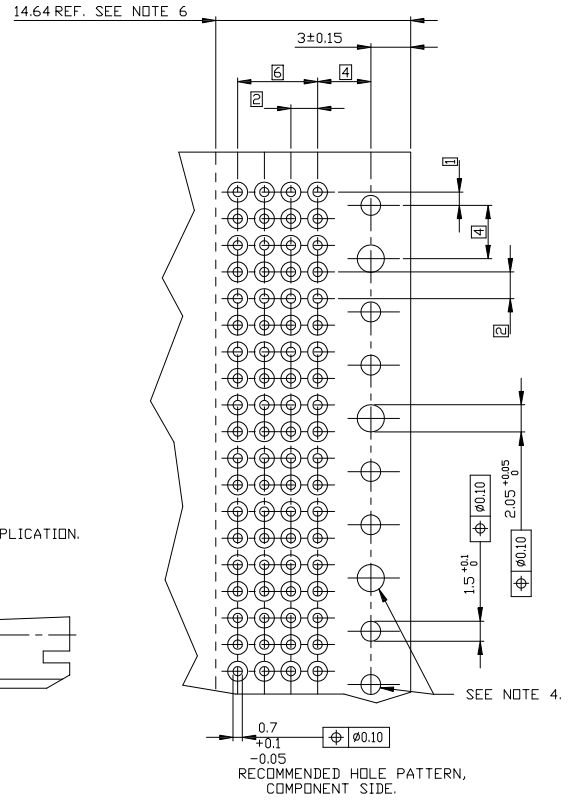
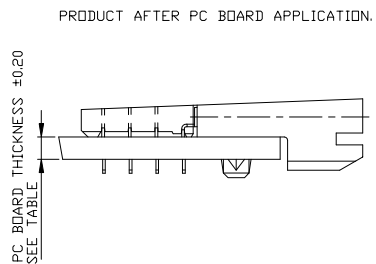
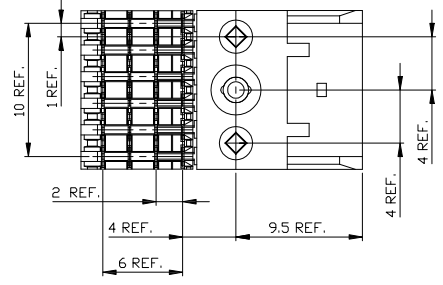
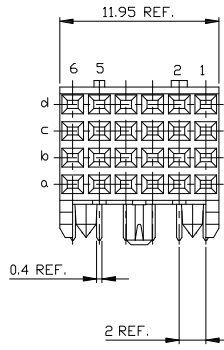
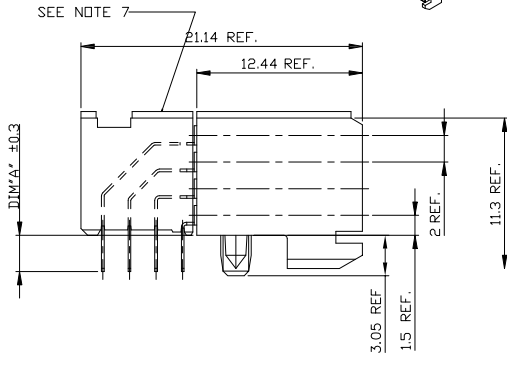
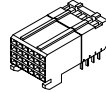
mat'l. code	tolerances unless otherwise specified	CUSTOMER COPY	FCI
lin en ngbr date	linear	projection	www.fciconnection
H 306-001 04 14/09		RA FEMALE SIGNAL	
J 306-001 04 11/23/06		12 mm PRESS PEG	
K 307-001 04 05/23/07	angles		
L 308-001 04 02/26/08	dr h bores mgmt 921216	product family METAL(tn)	code 213
M 309-001 04 06/06/09	dr h bores mgmt 921221	size dwg no	sheet 1 of 3
G 08847 04 00530 app J vnt jps 921222	CFR P Schak 921222	scale	
sheet revision M H W		51	
index sheet 1 2 3		A2	

PDM: Rev.M

STATUS: Released

Printed: Nov. 30, 2009

PC BOARD VERSIONS		
PRODUCTNR	PCB THICKNESS	DIM*A
89035-X02	1,6	2,90
89035-X12	2,4	3,53
89035-X02LF	1,6	2,90
89035-X12LF	2,4	3,53



- NOTES:
- BODY MAT'L: LIQUID CRYSTAL POLYMER 30% GLASS
FLAME RETARDANT ACC. UL 94-V0
 - TERMINAL MATERIAL: PHOSPHOR BRONZE.
 - PLATING SOLDER TAILS 2-8 μ m SnPb 90-97 OR 2-8 μ m PURE Sn
 - INDICATED HOLES ARE UNPLATED.
 - PRODUCT MARKING: PARTNUMBER & BATCH ID.
 - SET BACK FOR PRESS BLOCK.
 - TOP SURFACE OF PRESS BLOCK MAY EXTEND UP TO 0.4MM HIGHER THAN HOUSING. THIS MAY AFFECT THE TAIL LENGTH BEFORE APPLICATION TO A BOARD.
 - THIS PRODUCT MEETS EUROPEAN UNION DIRECTIVES AND OTHER COUNTRY REGULATIONS AS DESCRIBED IN GS-22-008
 - THE HOUSING WILL WITHSTAND EXPOSURE TO 260DEGREE PEAK TEMPERATURE FOR 10 SECONDS IN A WAVE SOLDER APPLICATION.

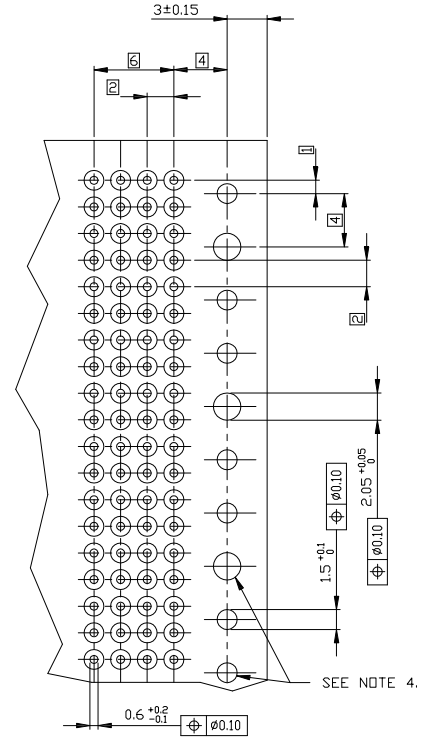
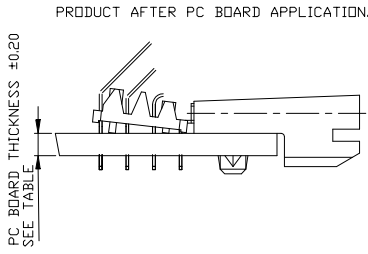
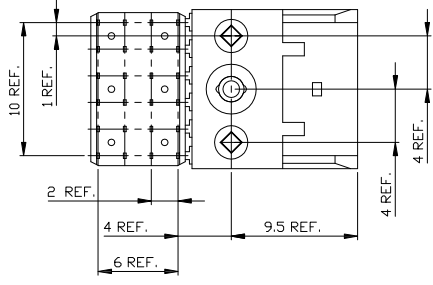
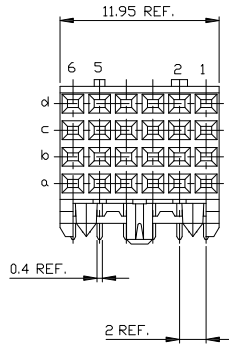
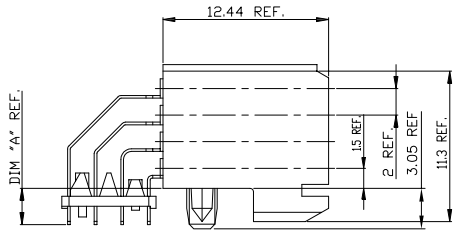
PLATING CONTACT AREA:

DASH NR:	PERFORMANCE LEVEL
-1YY/1YYLF	TELCORDIA CO
-2YY/2YYLF	CUSTOMER SPECIAL
-3YY/3YYLF	CUSTOMER SPECIAL

mat'l. code	tolerances unless otherwise specified	CUSTOMER COPY	FCI
l x	linear	projection	title RA FEMALE SIGNAL
	angles	1	product family METRAL(tn)
dr	l. de ill. 970529	mm	code 213
engr	P. Schuk 970529	scale	size A2
chr	P. Schuk 970529	5:1	89035
app	H. Caspers 970529		sheet 2 of 2
sheet	revision		
index	sheet		

All rights strictly reserved. Reproduction or translation in any form without written permission of FCI is prohibited.

PC BOARD VERSIONS		
PRODUCT NR.	PCB THICKNESS	DIM "A"
89035-X03	1,6	2,90
89035-X13	2,4	3,53
89035-X03LF	1,6	2,90
89035-X13LF	2,4	3,53



- NOTES:
- BODY MAT'L: LIQUID CRYSTAL POLYMER 30% GLASS
FLAME RETARDANT ACC. UL 94-V0
 - TERMINAL MATERIAL: PHOSPHOR BRONZE.
 - PLATING SOLDER TAILS 2-8 um SnPb 90-97 OR 2-8 um PURE Sn FOR LEAD FREE.
 - INDICATED HOLES ARE UNPLATED.
 - PRODUCT MARKING: PART NUMBER & BATCH ID.
 - THIS PRODUCT MEETS EUROPEAN UNION DIRECTIVES AND OTHER COUNTRY REGULATIONS AS DESCRIBED IN GS-22-009
 - THE HOUSING WILL WITHSTAND EXPOSURE TO 260DEGREE PEAK TEMPERATURE FOR 10 SECONDS IN A WAVE SOLDER APPLICATION.

PLATING CONTACT AREA:	
DASH NR:	PERFORMANCE LEVEL
-1YY/1YYLF	TELCORDIA CO
-2YY/2YYLF	CUSTOMER SPECIAL
-3YY/3YYLF	CUSTOMER SPECIAL

mat'l. code		tolerances unless otherwise specified		CUSTOMER COPY		FCI	
tr	ecn	ngdr	date	linear	projection	title	www.fciconnection
						RA FEMALE SIGNAL	
						12 mm PRESS PEG	
				angles		product family	METAL(tm)
				dr	Heaven Cn	11/23/06	code
				engr	Colins Lu	11/23/06	size
				chr	Beer Fu	11/23/06	scale
				appd	Joseph Hls	11/23/06	51
sheet	revision						
index	sheet						
						89035	sheet 3 of 3

All rights strictly reserved. Reproduction or translation without prior written permission of FCI is prohibited. © FCI Inc.