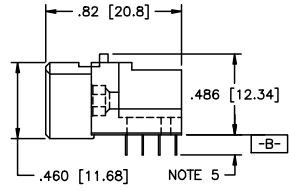
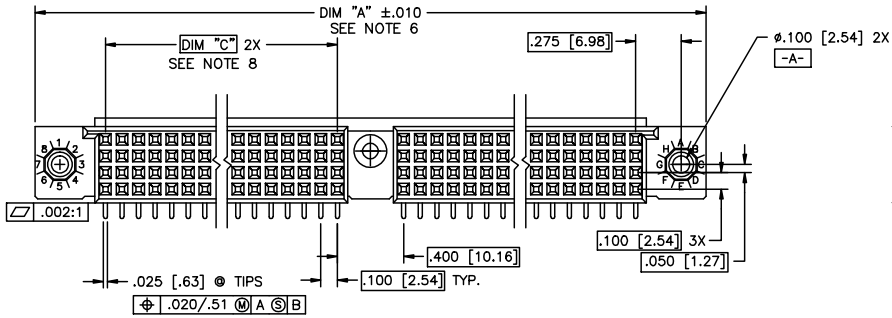
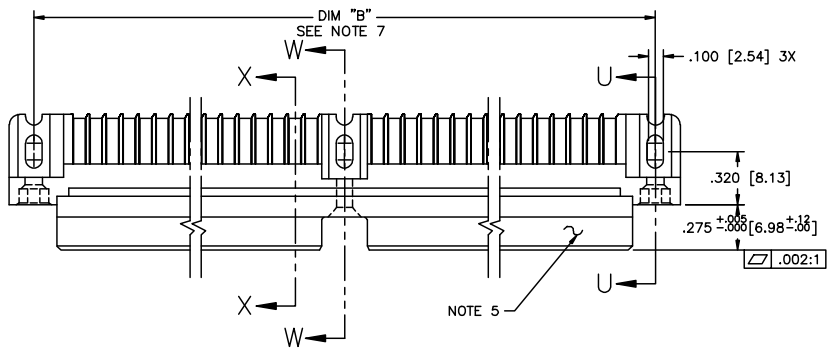


PRODUCT NUMBER
SEE NOTE 1

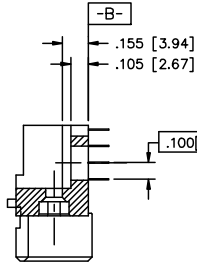


mal'l. code SEE NOTE 3		surface ISO 902	tolerance ISO 406 ISO 1001	projection INCH/MM	product family HPC
ltr	ecr no	dr	date	angles	linear
F	V41511	GAH	10/13/94	XXX/0/XXX	XXX/0/XXX
G	V50266	SAR	9/05/95	XXX/0/XXX	XXX/0/XXX
H	V82251	HTB	12/28/98	XXX/0/XXX	XXX/0/XXX
J	V00253	JWS	1/12/00	dr	D. SHEAFFER
K	V05-0510	LP	7/18/05	eng	S. CLARK
L	M08-0255	EAE	7/06/06	chr	S. CLARK
M	M08-0280	AGS	9/30/08	appd	S. CLARK
sheet	revision	M	M		
index	sheet	1	2		

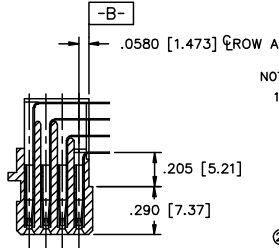
title	4 ROW R/A RECEPTACLE SOLDER TAIL, 1 GUIDE PIN	
dwg no	50004	sheet 1 of 2 size A3
type	Product Customer Drawing	

PDM: Rev:M STATUS:Released Printed: Sep 15, 2009

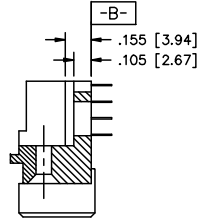
PRODUCT NUMBER SEE NOTE 1	NUMBER OF POSITIONS SEE NOTE 2	"Z" - TAIL LENGTH	SOLDER TAIL PLATING	CONTACT PLATING NOTE 11
50004-1YYYY	YYY	NOTE 4	TIN LEAD	30u"/.76um Au
50004-3YYYY	YYY	NOTE 4	TIN LEAD	50u"/1.27um Au
50004-5YYYY	YYY	NOTE 4	TIN LEAD	30u"/.76um GXT
50004-5YYYYLF	YYY	NOTE 4	TIN	30u"/.76um GXT



SECTION U-U



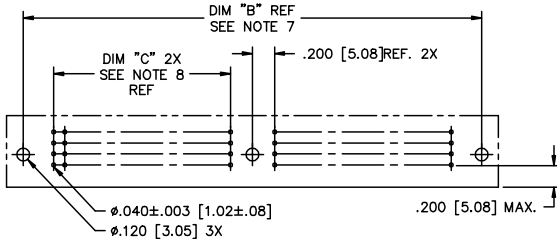
SECTION X-X



SECTION W-W

NOTES:

- PRODUCT NUMBERING CODE:
50004 - X YYY Z LF
LEAD FREE (OPTIONAL WITH GTX VERSION)
TAIL LENGTH (NOTE 4)
NO. OF POSITIONS (NOTE 2)
PLATING (SEE TABLE)
BASE NUMBER
- THIS PRODUCT IS CONFIGURED IN SIZES OF 20 THRU 122 COLUMNS IN INCREMENTS OF TWO.
I.e.: 20,22,24,26.....118,120,122.
- HOUSING MATERIAL: GLASS AND MINERAL FILLED THERMOPLASTIC.
CONTACT MATERIAL: BeCu
- "Z" - TAIL LENGTH OPTIONS:
E = .125±.010 / 3.18±.25
F = .145±.010 / 3.68±.25
H = .180±.010 / 4.57±.25
- COMPANY NAME, PART NUMBER AND LOT CODE TO APPEAR ON THIS SURFACE PER BUS-12-108.
- DIMENSION "A" CALCULATION = .100 (2.54) X NO. OF COLUMNS + 1.05 (26.7)
- DIMENSION "B" CALCULATION = .100 (2.54) X NO. OF COLUMNS + .750 (19.05)
- DIMENSION "C" CALCULATION = .100 (2.54) X NO. OF COLUMNS DIVIDED BY 2 - .100 (2.54)
- PRODUCT WITH "LF" SUFFIX MEETS EUROPEAN UNION DIRECTIVES AND OTHER COUNTRY REGULATIONS AS DESCRIBED IN GS-22-008.
- THIS HOUSING WILL WITHSTAND EXPOSURE TO 260 DEGREES C PEAK TEMPERATURE FOR 10 - 30 SECONDS IN A CONVECTION, INFRA-RED OR VAPOR PHASE REFLOW OVEN.
- PLATING OPTION:
MAY BE EITHER GOLD OR GXT PLATED AT MANUFACTURER'S OPTION.



RECOMMENDED PCB LAYOUT
(ALL HOLES LOCATED ON .100 [2.54] GRID UNLESS OTHERWISE SPECIFIED)

mal't. code		surface		tolerance	projection	product family	
NOTE 3		ISO 1902		ISO 145	INCH/MM	HPC	
				ISO 1001			
lfr	ecm no	dt	date	tolerances unless otherwise specified		title	
M				angles	linear	4 ROW R/A RECEPTACLE SOLDER TAIL, 1 GUIDE PIN	
				σ±z	linear	scale 1:1	
				dt	D. SHEAFFER	1/07/90	
				eng	S. CLARK	1/07/90	
				chr	S. CLARK	1/07/90	
				appd	S. CLARK	1/07/90	
sheet	revision			FCJ		dwg no	sheet 2 of 2 size
index	sheet					50004	A3
						type	Product Customer Drawing