

DRW NO. C-470-1075-500 SH 1 REV M

ZONE	REV	SCR NUMBER	DESCRIPTION	BY	DATE	APPROVED
	D	JMAN-6GPNSV.VER01	WAFER LOAD PATTERNS WERE CORRECTED TO SHOW REALITY. ON P/N'S 470-2075-102, 470-2075-602, 470-2155-101 AND 470-2155-601	HCL	10/01/05	J.MARVIN
	E	DMNA-6K8TZN.VER01	ADDED P/N'S 470-3205-100, 470-3205-600, 470-1155-102, & 470-1155-602	DLM	12/20/05	D.MCNAMARA
	F	JPRX-6S2HPM.VER01	ADDED PART NUMBERS 470-1105-103 AND 470-1105-603	HCL-PR	07/26/06	J.MARVIN
	G	JPRX-6UUNNG.VER01	ADDED P/N'S 470-1205-100, 470-1205-600, 470-2205-100, & 470-2205-600 UPDATED DIMENSIONING SCHEME ADDED NOTE FOR MAX BALL PROTRUSION, MISSING DIMENSION "P" AND A NOTE TO EXPLAIN "REFERENCE" AND "BASIC" DIMENSIONS	HCL-MS	11/06/06	J.MARVIN
SH1.A4 SH1.A4 SH4.A3 SH4.B1 SH2.3 SH2.A3	H	DMAN-6ZRNL6.VER01	CONTACT MAT'L WAS "CU ALLOY" 0.71 DIA WAS 0.76 0.25/0.05 WAS 0.30/0.01 0.125 TOL WAS 0.20 PART NUMBERS REORDERED IN TABLE WAFER 7 POSITION REMOVED FROM 470-1235-XXX	D.MALOON	04/10/07	J.MARVIN
	J	JPRX-788MQP.VER01	ADDED P/N'S 470-1075-101 AND 470-1075-601	HCL AP	10/18/07	J.PROULX
	K	JPRX-7ESPW4.VER01	ADDED P/N 470-1205-101 AND 470-1205-601	HCL-AP	05/15/08	J.PROULX
	L	JPRX-7PNHRT.VER01	ADDED P/Ns 470-3075-101 & 470-3075-601	HCL-RB	03/09/09	J.PROULX
	M	JPRX-7TBGML.VER01	ADDED P/N 470-2235-103 & 470-2235-603 CORRECTED DIM "R" ON SEVERAL PART NUMBERS	HCL-MH	07/02/09	J.PROULX

- ALL DIMENSIONS ARE IN MM.
- MAT'L: HOUSING/WAFERS/VACUUM CAP - LCP
CONTACTS - HIGH PERFORMANCE COPPER ALLOY, PER MTS-506.

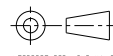
- 0.71 DIA SOLDER SPHERES WILL NOT BE PERFECTLY SPHERICAL AFTER REFLOW ATTACHMENT.
- HOLES REQUIRED IF OPTIONAL HOLD-DOWN PINS ARE USED.
- SOLDERBALL PROTRUSION BELOW HOUSING.
- SEE TECHNICAL BULLETIN TB-2082 FOR DETAILED LAYOUT AND SMT PROCESS RECOMMENDATIONS.
- MAXIMUM CO-PLANARITY OF THE BALL FIELD.
- MAXIMUM RADIAL TRUE POSITION OF ANY SOLDER BALL IN RELATION TO AN IDEAL BEST FIT GRID.
- TOLERANCES DO NOT APPLY TO REFERENCE DIMENSIONS SHOWN IN "()" OR BASIC DIMENSIONS SHOWN IN "□".

TOLERANCES	DESIGN	DATE
0.0	±0.25	02/01/09
0.00	±0.13	06/21/02
0.000	±	06/23/02
ANGLES	±	02/06/2004

Amphenol TCS
A Division of Amphenol Corporation
200 Innovative Way, Nashua, NH 03062 603.879.3000

TITLE: RECEPTACLE MODULE ASSEMBLY
NEXLEV CONNECTOR

UNLESS OTHERWISE SPECIFIED DIMENSIONS ARE IN MM/DECIMAL MARKER IS PERIOD	PART NO. SEE TABLE	REV
INTERPRET PER ASME Y14.5M	DRAWING NO. C-470-1075-500	REV M
CODE IDENT 31413	PROBASSER P1002-PT-HSG-CAP-ASM10X13X30	1.54
	P1002-PD-HSG-CU-W_CAP .dwg	1.70
	SIZE B SCALE 2/1	SHEET 1 OF 9



005-55-101-017-1 (09.04.09)

1.54
1.70

DRW NO. C-470-1075-500 SH 2 REV M

ZONE		REV	SCR NUMBER	DESCRIPTION	BY	DATE	APPROVED	
PART NUMBER		REV	DESCRIPTION	WAFERS INSTALLED	H	N	P	R
470-1075-100	H		10 POS. 7.5 HIGH. REC ASSY - TIN/LEAD BALL	ALL	7.5	9	15.75	21.81
470-1075-101	H		10 POS. 7.5 HIGH. REC ASSY - TIN/LEAD BALL	1, 3, 5, 7, 9	7.5	9	15.75	21.81
470-1075-600	H		10 POS. 7.5 HIGH. REC ASSY - RoHS COMPLIANT BALL	ALL	7.5	9	15.75	21.81
470-1075-601	H		10 POS. 7.5 HIGH. REC ASSY - RoHS COMPLIANT BALL	1, 3, 5, 7, 9	7.5	9	15.75	21.81
470-1105-100	H		10 POS. 10.5 HIGH. REC ASSY - TIN/LEAD BALL	ALL	10.5	9	15.75	21.81
470-1105-102	H		10 POS. 10.5 HIGH. REC ASSY - TIN/LEAD BALL	1,3,5,7,9	10.5	9	15.75	21.81
470-1105-103	H		10 POS. 10.5 HIGH. REC ASSY - TIN/LEAD BALL	1,3,5,7,9,10	10.5	9	15.75	21.81
470-1105-600	H		10 POS. 10.5 HIGH. REC ASSY - RoHS COMPLIANT BALL	ALL	10.5	9	15.75	21.81
470-1105-602	H		10 POS. 10.5 HIGH. REC ASSY - RoHS COMPLIANT BALL	1,3,5,7,9	10.5	9	15.75	21.81
470-1105-603	H		10 POS. 10.5 HIGH. REC ASSY - RoHS COMPLIANT BALL	1,3,5,7,9,10	10.5	9	15.75	21.81
470-1155-100	H		10 POS. 15.5 HIGH. REC ASSY - TIN/LEAD BALL	ALL	15.5	9	15.75	21.81
470-1155-101	H		10 POS. 15.5 HIGH. REC ASSY - TIN/LEAD BALL	1,3,5,7,9	15.5	9	15.75	21.81
470-1155-102	H		10 POS. 15.5 HIGH. REC ASSY - TIN/LEAD BALL	1,3,5,7,9,10	15.5	9	15.75	21.81
470-1155-600	H		10 POS. 15.5 HIGH. REC ASSY - RoHS COMPLIANT BALL	ALL	15.5	9	15.75	21.81
470-1155-601	H		10 POS. 15.5 HIGH. REC ASSY - RoHS COMPLIANT BALL	1,3,5,7,9	15.5	9	15.75	21.81
470-1155-602	H		10 POS. 15.5 HIGH. REC ASSY - RoHS COMPLIANT BALL	1,3,5,7,9,10	15.5	9	15.75	21.81
470-1205-100	H		10 POS. 20.5 HIGH. REC ASSY - TIN/LEAD BALL	ALL	20.5	9	15.75	21.81
470-1205-600	H		10 POS. 20.5 HIGH. REC ASSY - RoHS COMPLIANT BALL	ALL	20.5	9	15.75	21.81
470-1205-101	H		10 POS. 20.5 HIGH. REC ASSY - TIN/LEAD BALL	1,2,3,4,6,7,8,9,10	20.5	9	15.75	21.81
470-1205-601	H		10 POS. 20.5 HIGH. REC ASSY - RoHS COMPLIANT BALL	1,2,3,4,6,7,8,9,10	20.5	9	15.75	21.81
470-1235-100	H		10 POS. 23.5 HIGH. REC ASSY - TIN/LEAD BALL	ALL	23.5	9	15.75	21.81
470-1235-101	H		10 POS. 23.5 HIGH. REC ASSY - TIN/LEAD BALL	1,2,3,4,5,6,8,10	23.5	9	15.75	21.81
470-1235-102	H		10 POS. 23.5 HIGH. REC ASSY - TIN/LEAD BALL	1,3,5,7,9	23.5	9	15.75	21.81
470-1235-600	H		10 POS. 23.5 HIGH. REC ASSY - RoHS COMPLIANT BALL	ALL	23.5	9	15.75	21.81
470-1235-601	H		10 POS. 23.5 HIGH. REC ASSY - RoHS COMPLIANT BALL	1,2,3,4,5,6,8,10	23.5	9	15.75	21.81
470-1235-602	H		10 POS. 23.5 HIGH. REC ASSY - RoHS COMPLIANT BALL	1,3,5,7,9	23.5	9	15.75	21.81
470-2075-100	H		20 POS. 7.5 HIGH. REC ASSY - TIN/LEAD BALL	ALL	7.5	19	33.25	39.31
470-2075-101	H		20 POS. 7.5 HIGH. REC ASSY - TIN/LEAD BALL	1,3,5,7,9,11,13,15,17,19	7.5	19	33.25	39.31
470-2075-102	H		20 POS. 7.5 HIGH. REC ASSY - TIN/LEAD BALL	1,3,5,7,9,11,13,14,15,16,17,18,19,20	7.5	19	33.25	39.31
470-2075-600	H		20 POS. 7.5 HIGH. REC ASSY - RoHS COMPLIANT BALL	ALL	7.5	19	33.25	39.31
470-2075-601	H		20 POS. 7.5 HIGH. REC ASSY - RoHS COMPLIANT BALL	1,3,5,7,9,11,13,15,17,19	7.5	19	33.25	39.31
470-2075-602	H		20 POS. 7.5 HIGH. REC ASSY - RoHS COMPLIANT BALL	1,3,5,7,9,11,13,14,15,16,17,18,19,20	7.5	19	33.25	39.31
470-2105-100	H		20 POS. 10.5 HIGH. REC ASSY - TIN/LEAD BALL	ALL	10.5	19	33.25	39.31
470-2105-101	H		20 POS. 10.5 HIGH. REC ASSY - TIN/LEAD BALL	1,3,5,7,9,11,13,15,17,19	10.5	19	33.25	39.31
470-2105-600	H		20 POS. 10.5 HIGH. REC ASSY - RoHS COMPLIANT BALL	ALL	10.5	19	33.25	39.31
470-2105-601	H		20 POS. 10.5 HIGH. REC ASSY - RoHS COMPLIANT BALL	1,3,5,7,9,11,13,15,17,19	10.5	19	33.25	39.31
470-2155-100	H		20 POS. 15.5 HIGH. REC ASSY - TIN/LEAD BALL	ALL	15.5	19	33.25	39.31
470-2155-101	H		20 POS. 15.5 HIGH. REC ASSY - TIN/LEAD BALL	1,3,5,7,9,11,13,14,15,16,17,18,19,20	15.5	19	33.25	39.31
470-2155-600	H		20 POS. 15.5 HIGH. REC ASSY - RoHS COMPLIANT BALL	ALL	15.5	19	33.25	39.31
470-2155-601	H		20 POS. 15.5 HIGH. REC ASSY - RoHS COMPLIANT BALL	1,3,5,7,9,11,13,14,15,16,17,18,19,20	15.5	19	33.25	39.31
470-2205-100	H		20 POS. 20.5 HIGH. REC ASSY - TIN/LEAD BALL	ALL	20.5	19	33.25	39.31
470-2205-600	H		20 POS. 20.5 HIGH. REC ASSY - RoHS COMPLIANT BALL	ALL	20.5	19	33.25	39.31
470-2235-100	H		20 POS. 23.5 HIGH. REC ASSY - TIN/LEAD BALL	ALL	23.5	19	33.25	39.31
470-2235-101	H		20 POS. 23.5 HIGH. REC ASSY - TIN/LEAD BALL	1,2,4,5,7,8,10,11,13,14,16,17,19,20	23.5	19	33.25	39.31
470-2235-102	H		20 POS. 23.5 HIGH. REC ASSY - TIN/LEAD BALL	1 THRU 16,18,20	23.5	19	33.25	39.31
470-2235-103	H		20 POS. 23.5 HIGH. REC ASSY - TIN/LEAD BALL	1 THRU 12,18,19,20	23.5	19	33.25	39.31
470-2235-600	H		20 POS. 23.5 HIGH. REC ASSY - RoHS COMPLIANT BALL	ALL	23.5	19	33.25	39.31
470-2235-601	H		20 POS. 23.5 HIGH. REC ASSY - RoHS COMPLIANT BALL	1,2,4,5,7,8,10,11,13,14,16,17,19,20	23.5	19	33.25	39.31
470-2235-602	H		20 POS. 23.5 HIGH. REC ASSY - RoHS COMPLIANT BALL	1 THRU 16,18,20	23.5	19	33.25	39.31
470-2235-603	H		20 POS. 23.5 HIGH. REC ASSY - RoHS COMPLIANT BALL	1 THRU 12,18,19,20	23.5	19	33.25	39.31
470-3075-100	H		30 POS. 7.5 HIGH. REC ASSY - TIN/LEAD BALL	ALL	7.5	29	50.75	56.81
470-3075-101	H		30 POS. 7.5 HIGH. REC ASSY - TIN/LEAD BALL	1,3,5,7,9,11,13,15,17,19,21,23,25,27,29	7.5	29	50.75	56.81
470-3075-600	H		30 POS. 7.5 HIGH. REC ASSY - RoHS COMPLIANT BALL	ALL	7.5	29	50.75	56.81
470-3075-601	H		30 POS. 7.5 HIGH. REC ASSY - RoHS COMPLIANT BALL	1,3,5,7,9,11,13,15,17,19,21,23,25,27,29	7.5	29	50.75	56.81
470-3105-100	H		30 POS. 10.5 HIGH. REC ASSY - TIN/LEAD BALL	ALL	10.5	29	50.75	56.81

NOTE: TABLE CONTINUES ON SHEET 3

TOLERANCES		DESIGN 1/01/00 D. MENAMARA	Amphenol TCS A Division of Amphenol Corporation 200 Innovative Way, Nashua, NH 03063 603.879.3000	TITLE RECEPTACLE MODULE ASSEMBLY NEXLEV CONNECTOR	
0.0	±0.25	DRAWN 06/21/02 RJ MCISAAC			PART NO.
0.00	±0.13	CHK 06/21/02 J. MARVIN			REV
0.000	±	APVD 02/06/2004 J. MARVIN	DRAWING NO. C-470-1075-500		
ANGLES ± - UNLESS OTHERWISE SPECIFIED DIMENSIONS ARE IN MM/DECIMAL MARKER IS PERIOD			PREAMSSER P1002-PT-HSG-CAP-ASM10X13X30 P1002-PD-HSG-CU_W_CAP.dwg 1.54 1.70		
INTERPRET PER ASME Y14.5M CODE IDENT 31413		CUSTOMER USE DRAWING			
SIZE B	SCALE 2/1	SHEET 2 OF 9			

000 - 000 - 000 - 000 - 000 - 000

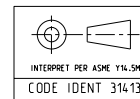
SH 2 REV M

DRW NO. C-470-1075-500 SH 3 REV M

ZONE	REV	SCR NUMBER	DESCRIPTION	BY	DATE	APPROVED
			SEE SHEET 1			

PART NUMBER	REV	DESCRIPTION	WAFERS INSTALLED	H	N	P	R
470-3105-600	H	30 POS. 10.5 HIGH, REC ASSY - RoHS COMPLIANT BALL	ALL	10.5	29	50.75	56.81
470-3155-100	H	30 POS. 15.5 HIGH, REC ASSY - TIN/LEAD BALL	ALL	15.5	29	50.75	56.81
470-3155-600	H	30 POS. 15.5 HIGH, REC ASSY - RoHS COMPLIANT BALL	ALL	15.5	29	50.75	56.81
470-3205-100	H	30 POS. 20.5 HIGH, REC ASSY - TIN/LEAD BALL	ALL	20.5	29	50.75	56.81
470-3205-600	H	30 POS. 20.5 HIGH, REC ASSY - RoHS COMPLIANT BALL	ALL	20.5	29	50.75	56.81
470-3235-100	H	30 POS. 23.5 HIGH, REC ASSY - TIN/LEAD BALL	ALL	23.5	29	50.75	56.81
470-3235-101	H	30 POS. 23.5 HIGH, REC ASSY - TIN/LEAD BALL	1,3,5,7,9,11,13,15,17,19,21,23,25,27,29	23.5	29	50.75	56.81
470-3235-102	H	30 POS. 23.5 HIGH, REC ASSY - TIN/LEAD BALL	1 THRU 26,28,30	23.5	29	50.75	56.81
470-3235-600	H	30 POS. 23.5 HIGH, REC ASSY - RoHS COMPLIANT BALL	ALL	23.5	29	50.75	56.81
470-3235-601	H	30 POS. 23.5 HIGH, REC ASSY - RoHS COMPLIANT BALL	1,3,5,7,9,11,13,15,17,19,21,23,25,27,29	23.5	29	50.75	56.81
470-3235-602	H	30 POS. 23.5 HIGH, REC ASSY - RoHS COMPLIANT BALL	1 THRU 26,28,30	23.5	29	50.75	56.81
470-5105-100	H	25 POS. 10.5 HIGH, REC ASSY - TIN/LEAD BALL	ALL	10.5	24	42.00	48.06
470-5105-600	H	25 POS. 10.5 HIGH, REC ASSY - RoHS COMPLIANT BALL	ALL	10.5	24	42.00	48.06
470-5155-100	H	25 POS. 15.5 HIGH, REC ASSY - TIN/LEAD BALL	ALL	15.5	24	42.00	48.06
470-5155-101	H	25 POS. 15.5 HIGH, REC ASSY - TIN/LEAD BALL	1 THRU 21, 23, 25	15.5	24	42.00	48.06
470-5155-600	H	25 POS. 15.5 HIGH, REC ASSY - RoHS COMPLIANT BALL	ALL	15.5	24	42.00	48.06
470-5155-601	H	25 POS. 15.5 HIGH, REC ASSY - RoHS COMPLIANT BALL	1 THRU 21, 23, 25	15.5	24	42.00	48.06

TOLERANCES	DESIGN 1/201/00 D. MENAMARA	Amphenol TCS A Division of Amphenol Corporation 300 Innovative Way, Nashua, NH 03062 603.879.3000	TITLE	RECEPTACLE MODULE ASSEMBLY NEXLEV CONNECTOR	
0.0 ±0.25	DRAWN 06/21/02 RJ MCISAAC		PART NO.	SEE TABLE	
0.00 ±0.13	CHK 06/23/02 J. MARVIN		DRAWING NO.	C-470-1075-500	
0.000 ± -	APVD 02/06/2004 J. MARVIN		PROCESSOR	P1002-PT-HSG-CAP-ASM10X13X30 P1002-PD-HSG-CU_W_CAP.dwg	
ANGLES ± -	UNLESS OTHERWISE SPECIFIED DIMENSIONS ARE IN MM. DECIMAL MARKER IS PERIOD		SIZE B	SCALE 2/1	SHEET 3 OF 9



CUSTOMER USE
DRAWING

C-470-1075-500

SH 3
REV M

4

3

4

3

2

1

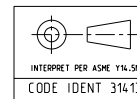
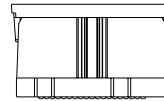
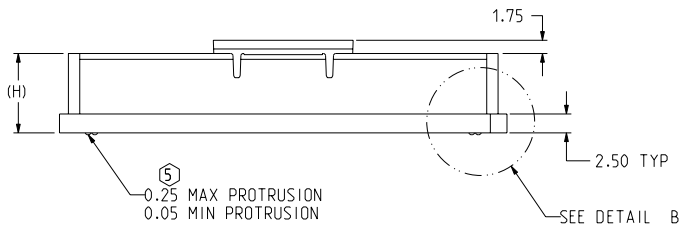
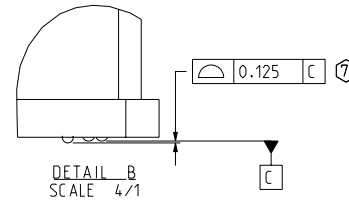
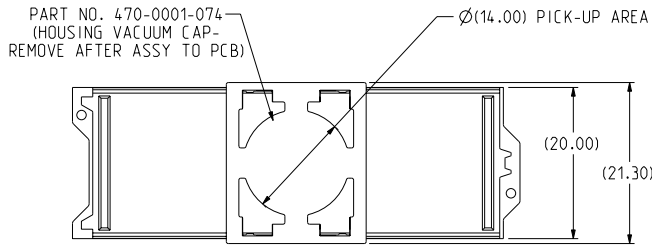
B

B

A

DRW NO. C-470-1075-500 SH 4 REV M

ZONE	REV	SCR NUMBER	DESCRIPTION	BY	DATE	APPROVED
			SEE SHEET 1			



TOLERANCES	DESIGN
0.0	±0.25
0.00	±0.13
0.000	±
ANGLES	±

DESIGN: J. MENAMARA
DRAWN: 06/21/02 R.J. MCISAAC
CHK: 06/23/02 J. MARVIN
APVD: 02/06/2004 J. MARVIN

Amphenol TCS
A Division of Amphenol Corporation
300 Innovative Way, Nashua, NH 03062 603.870.3000

TITLE: RECEPTACLE MODULE ASSEMBLY
NEXLEV CONNECTOR

UNLESS OTHERWISE SPECIFIED DIMENSIONS ARE IN MM. DECIMAL MARKER IS PERIOD

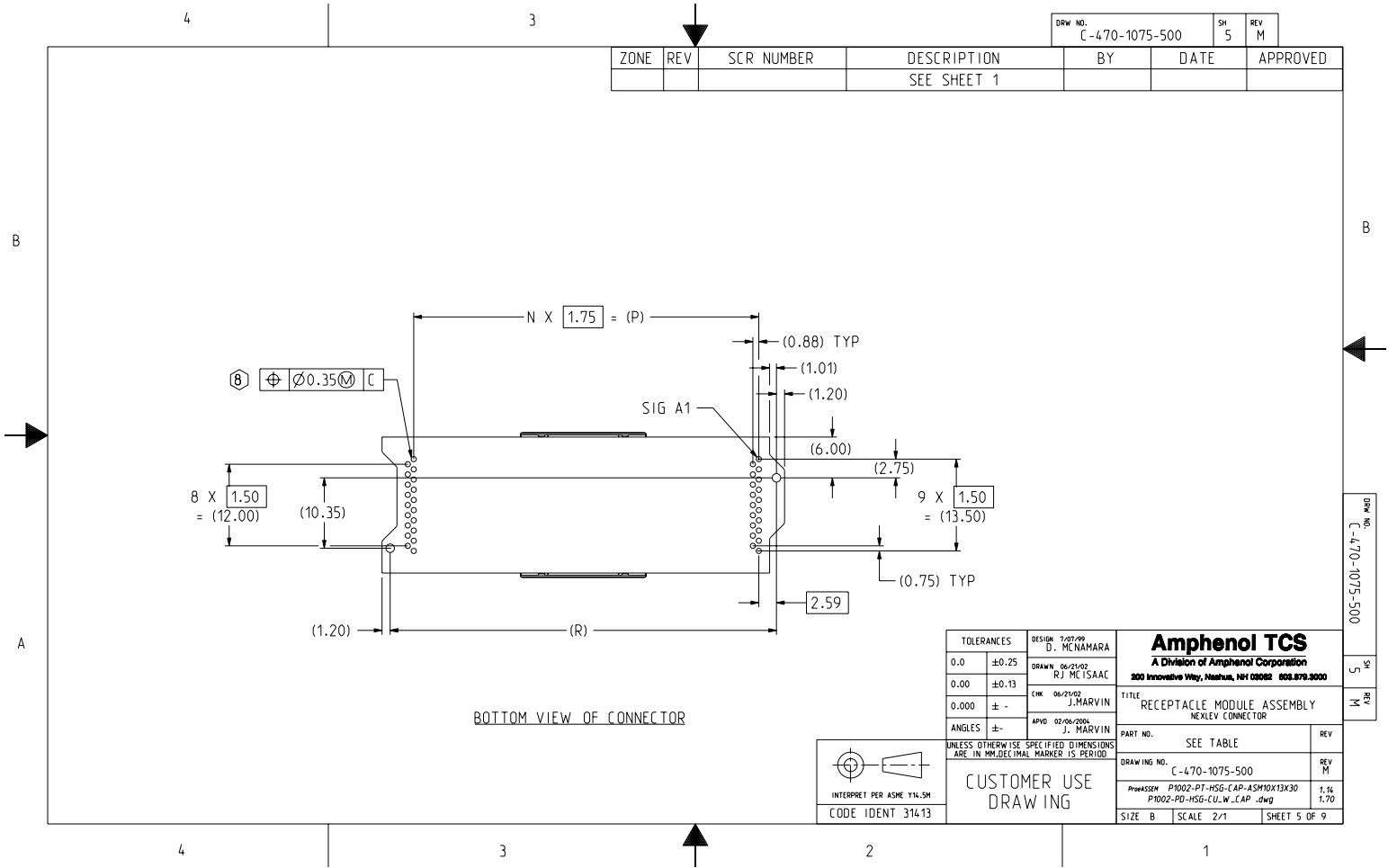
CUSTOMER USE
DRAWING

PART NO.	REV	
SEE TABLE		
DRAWING NO.	REV	
C-470-1075-500	M	
PROCESSOR P1002-PT-HSG-CAP-ASM10X13X30	1.54	
P1002-PD-HSG-CU_W_CAP .dwg	1.70	
SIZE	SCALE	SHEET
B	2/1	4 OF 9

005-5/01-0(L77)

7
HS

K
R38



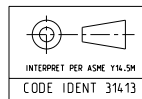
ZONE	REV	SCR NUMBER	DESCRIPTION	BY	DATE	APPROVED
			SEE SHEET 1			

DRW NO.	SH	REV
C-470-1075-500	5	M

BOTTOM VIEW OF CONNECTOR

TOLERANCES	DESIGN
0.0 ±0.25	7/27/99 D. MENAMARA
0.00 ±0.13	DRAWN 06/21/02 R.J. MCISAAC
0.000 ±	CHK 06/23/02 J. MARVIN
ANGLES ±	APVD 02/06/2004 J. MARVIN

Amphenol TCS A Division of Amphenol Corporation 300 Innovative Way, Nashua, NH 03062 603.879.3000	
TITLE RECEPTACLE MODULE ASSEMBLY NEXLEV CONNECTOR	
PART NO.	REV
SEE TABLE	



UNLESS OTHERWISE SPECIFIED DIMENSIONS ARE IN MM. DECIMAL MARKER IS PERIOD

CUSTOMER USE DRAWING

DRAWING NO.	REV
C-470-1075-500	M
PROBASSER P1002-PT-HSG-CAP-ASM10X13X30	1.54
P1002-PD-HSG-CU_W_CAP .dwd	1.70
SIZE B	SHEET 5 OF 9

C-470-1075-500 (DWG) 5/13/04

4

3

2

1

B

B

A

4

3

↑

5

13

M

REV

DATE

BY

APPROVED

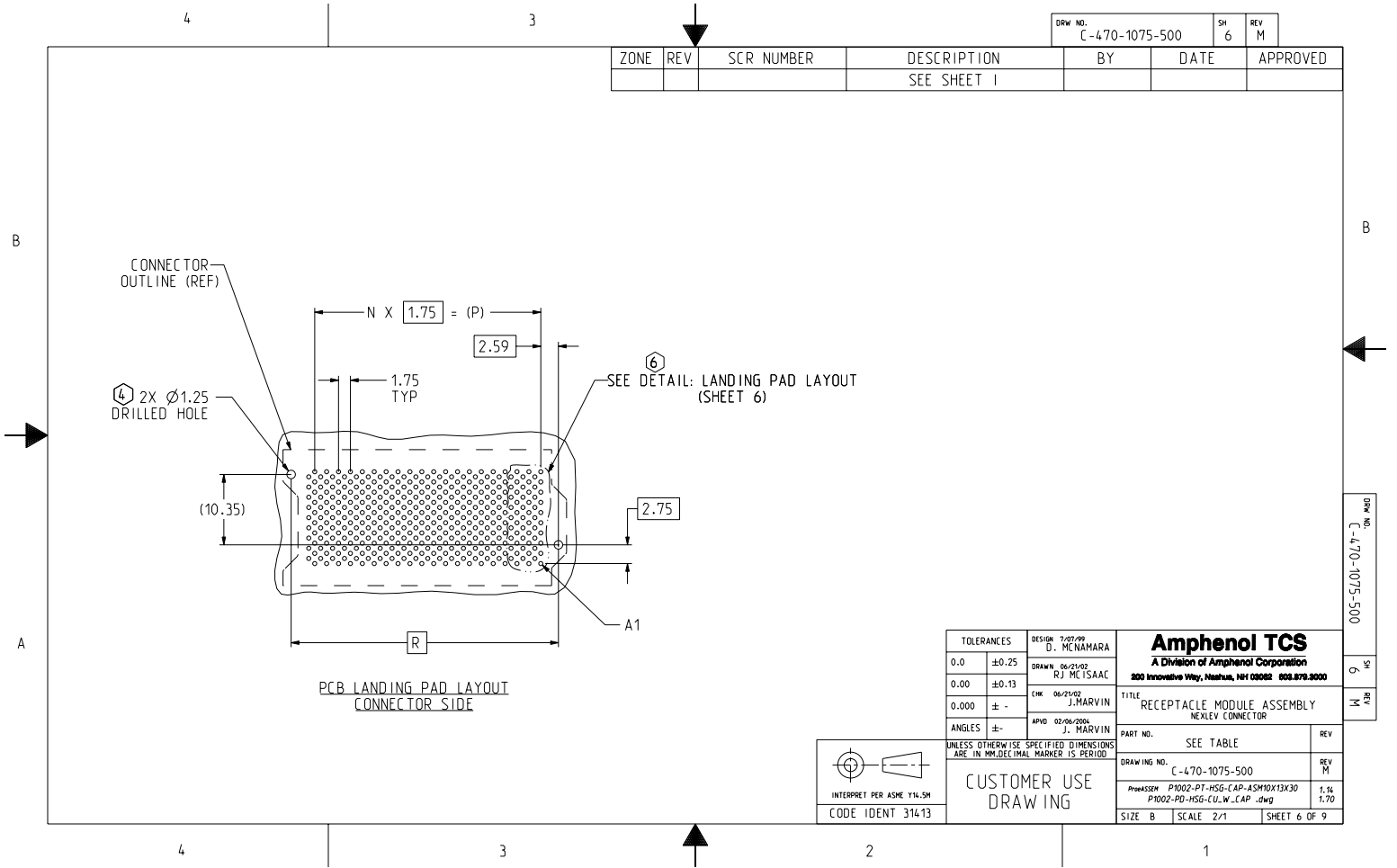
DESCRIPTION

SCR NUMBER

REV

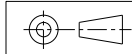
SH

DRW NO.



ZONE	REV	SCR NUMBER	DESCRIPTION	BY	DATE	APPROVED
			SEE SHEET 1			

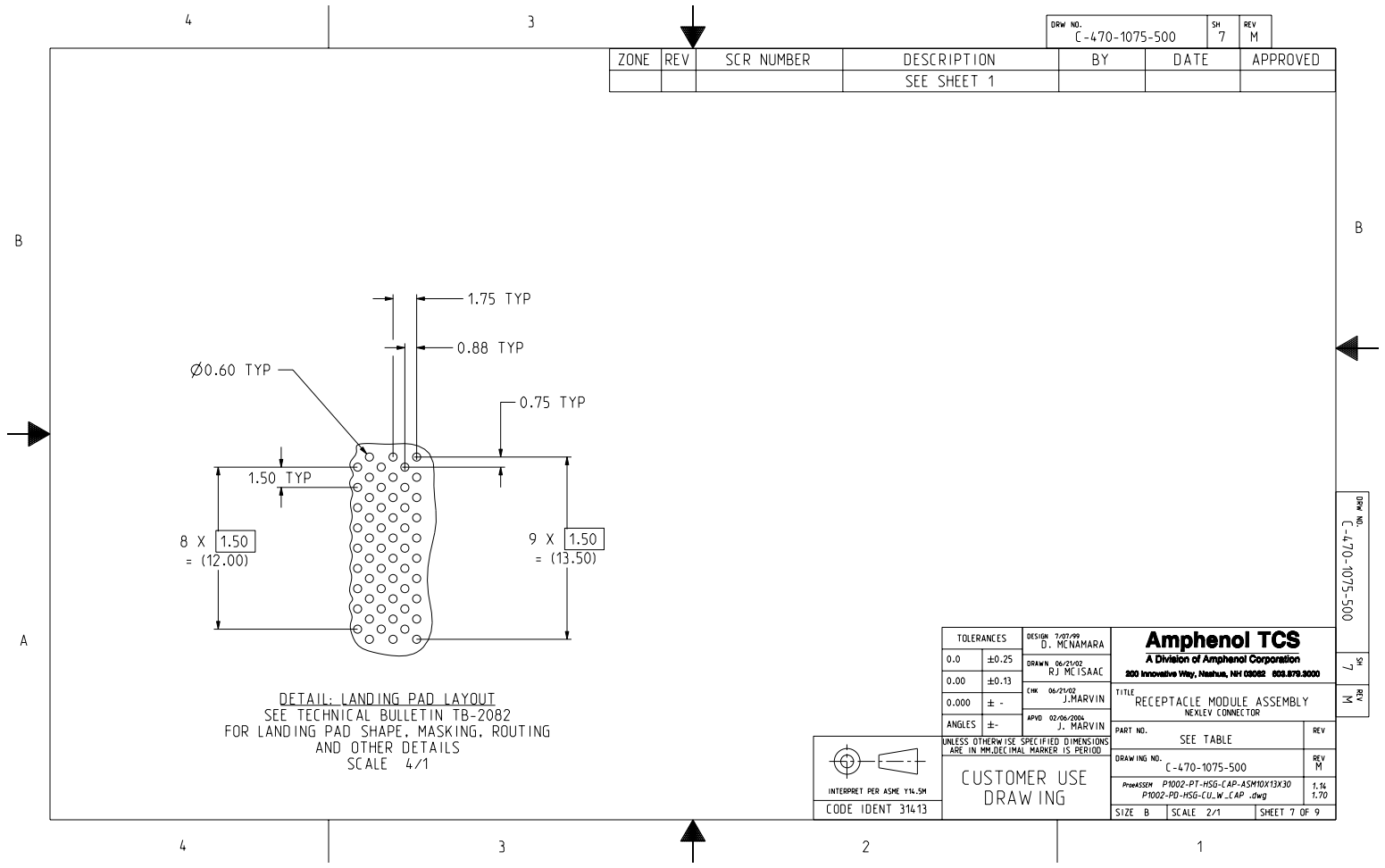
DRW NO. C-470-1075-500 SH 6 REV M

TOLERANCES	DESIGN 1/01/00 D. MENAMARA	Amphenol TCS A Division of Amphenol Corporation 300 Innovative Way, Nashua, NH 03062 603.870.3000	TITLE	RECEPTACLE MODULE ASSEMBLY NEXLEV CONNECTOR
0.0 ±0.25	DRAWN 06/21/02 RJ MCISAAC		PART NO.	SEE TABLE
0.00 ±0.13	CHK 06/23/02 J. MARVIN		DRAWING NO.	C-470-1075-500
0.000 ± -	APVD 02/06/2004 J. MARVIN		PROCESSOR	P1002-PT-HSG-CAP-ASM10X13X30 P1002-PD-HSG-CU_W_CAP .dwd
ANGLES ± -	UNLESS OTHERWISE SPECIFIED DIMENSIONS ARE IN MM. DECIMAL MARKER IS PERIOD		SIZE B	SCALE 2/1
 INTERPRET PER ASME Y14.5M CODE IDENT 31413		CUSTOMER USE DRAWING		SHEET 6 OF 9

C-470-1075-500

REV 9

REV M



DETAIL: LANDING PAD LAYOUT
 SEE TECHNICAL BULLETIN TB-2082
 FOR LANDING PAD SHAPE, MASKING, ROUTING
 AND OTHER DETAILS
 SCALE 4/1

ZONE	REV	SCR NUMBER	DESCRIPTION	BY	DATE	APPROVED
			SEE SHEET 1			

DRW NO. C-470-1075-500	SH 7	REV M
---------------------------	---------	----------

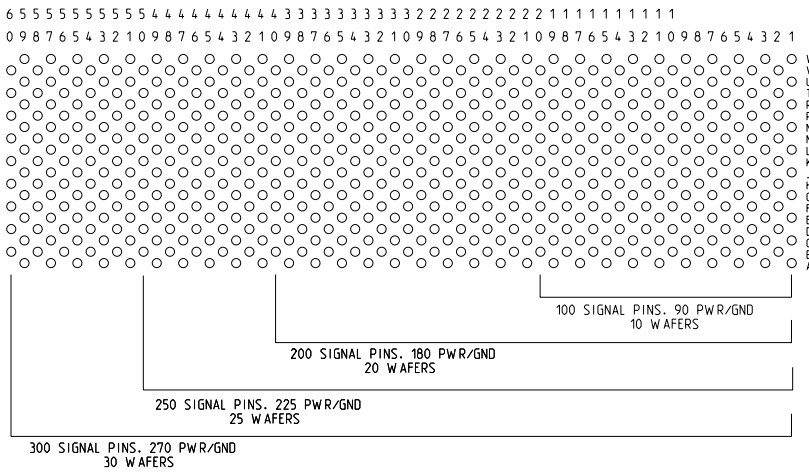
TOLERANCES	DESIGN D. MENAMARA	Amphenol TCS A Division of Amphenol Corporation 300 Innovative Way, Nashua, NH 03062 603.879.3000	TITLE	REV
0.0 ±0.25	DRAWN 06/21/02 RJ MCISAAC		RECEPTACLE MODULE ASSEMBLY	M
0.00 ±0.13	CHK 06/23/02 J. MARVIN		NEXLEV CONNECTOR	M
0.000 ± -	APVD 02/06/2004 J. MARVIN		PART NO. SEE TABLE	REV
ANGLES ± -	UNLESS OTHERWISE SPECIFIED DIMENSIONS ARE IN MM. DECIMAL MARKER IS PERIOD	DRAWING NO. C-470-1075-500	REV M	
INTERPRET PER ASME Y14.5M CODE IDENT 31413		CUSTOMER USE DRAWING		
		PROCESSOR P1002-PT-HSG-CAP-ASM10X13X30 P1002-PD-HSG-CU_W_CAP .dwg	1.54 1.70	
		SIZE B SCALE 2/1	SHEET 7 OF 9	

C-470-1075-500

SH 7
REV M

DRW NO. C-470-1075-500	SH 8	REV M
---------------------------	---------	----------

ZONE	REV	SCR NUMBER	DESCRIPTION	BY	DATE	APPROVED
			SEE SHEET 1			



CONNECTOR SIDE OF PCB
PIN ASSIGNMENT
SCALE: 4/1

TOLERANCES	DESIGN	Amphenol TCS A Division of Amphenol Corporation 300 Innovative Way, Nashua, NH 03062 603.876.3000	
0.0 ±0.25	1/01/99 D. MENAMARA	RECEPTACLE MODULE ASSEMBLY NEXLEV CONNECTOR PART NO. SEE TABLE REV DRAWING NO. C-470-1075-500 PROCESSED P1002-PT-HSG-CAP-ASM10X13X30 P1002-PD-HSG-CU-W_CAP .dwd 1.54 1.70 SIZE B SCALE 2/1 SHEET 8 OF 9	
0.00 ±0.13	DRAWN 06/21/02 RJ MCISAAC		
0.000 ± -	CHK 06/23/02 J. MARVIN		
ANGLES ± -	APVD 02/06/2004 J. MARVIN		
UNLESS OTHERWISE SPECIFIED DIMENSIONS ARE IN MM. DECIMAL MARKER IS PERIOD			
 INTERPRET PER ASME Y14.5M CODE IDENT 314.13		CUSTOMER USE DRAWING	

C-470-1075-500

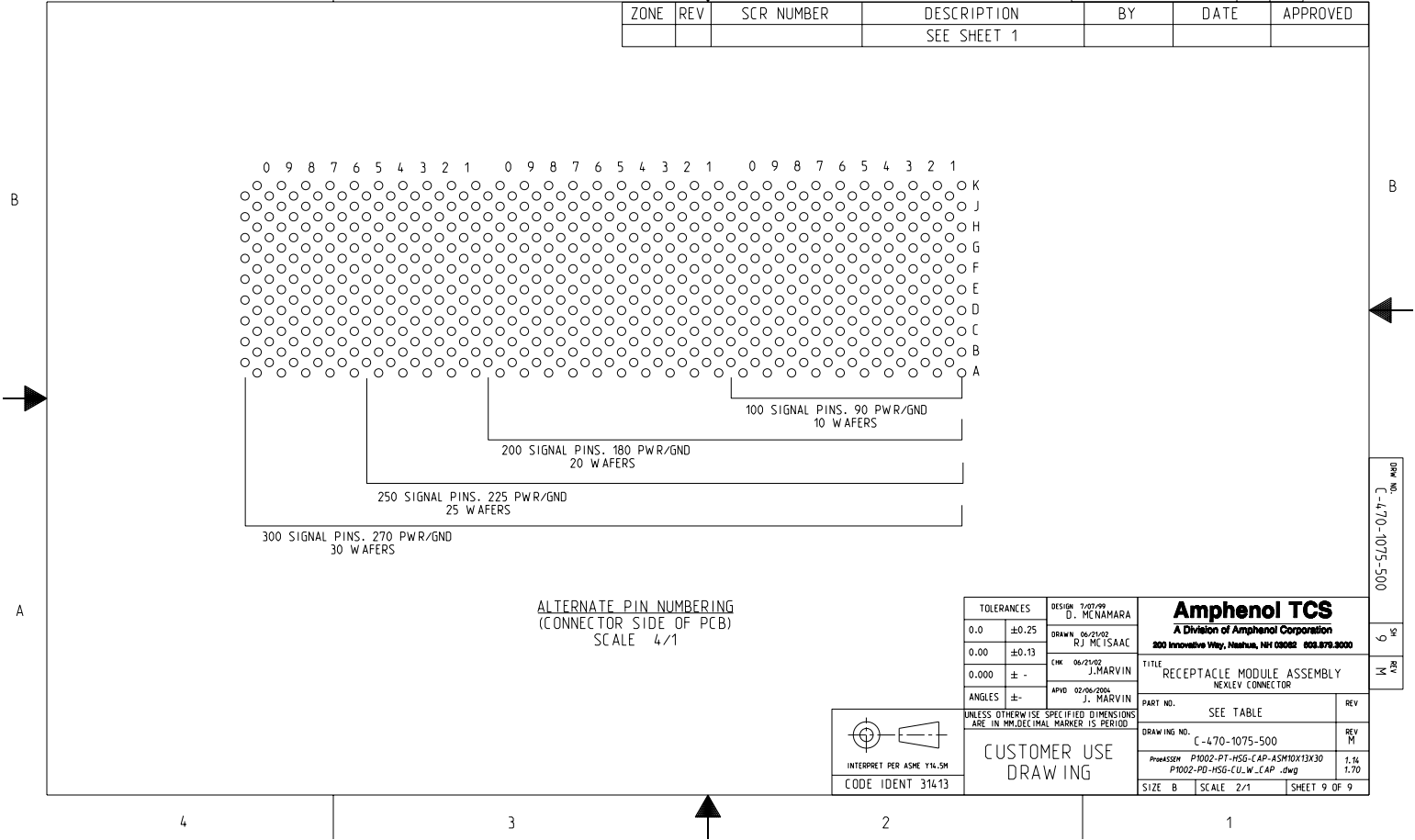
REV
M

4

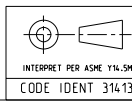
3

DRW NO. C-470-1075-500	SH 9	REV M
---------------------------	---------	----------

ZONE	REV	SCR NUMBER	DESCRIPTION	BY	DATE	APPROVED
			SEE SHEET 1			



ALTERNATE PIN NUMBERING
(CONNECTOR SIDE OF PCB)
SCALE 4/1



TOLERANCES	DESIGN
0.0 ±0.25	1/01/00 D. MENAMARA
0.00 ±0.13	DRAWN 06/21/02 RJ MCISAAC
0.000 ± -	CHK 06/23/02 J. MARVIN
ANGLES ± -	APVD 02/06/2004 J. MARVIN
UNLESS OTHERWISE SPECIFIED DIMENSIONS ARE IN MM. DECIMAL MARKER IS PERIOD	

Amphenol TCS A Division of Amphenol Corporation 300 Innovative Way, Nashua, NH 03062 603.879.3000	
TITLE RECEPTACLE MODULE ASSEMBLY NEXLEV CONNECTOR	
PART NO. SEE TABLE	REV
DRAWING NO. C-470-1075-500	REV M
PROCESSOR P1002-PT-HSG-CAP-ASM10X13X30 P1002-PD-HSG-CU_W_CAP .dwg	1.54 1.70
SIZE B	SHEET 9 OF 9

CUSTOMER USE
DRAWING

4

3

2

1

005.00

6
M
K