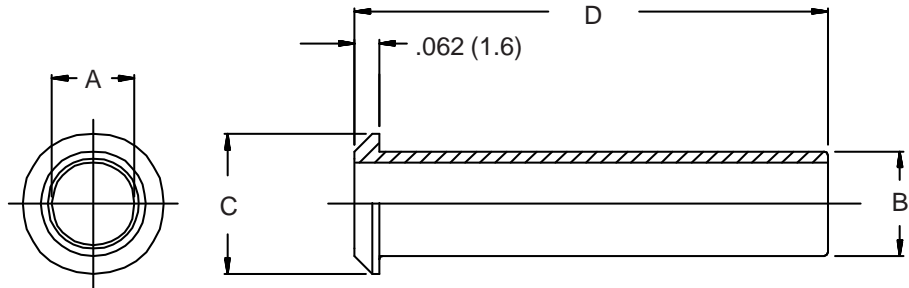
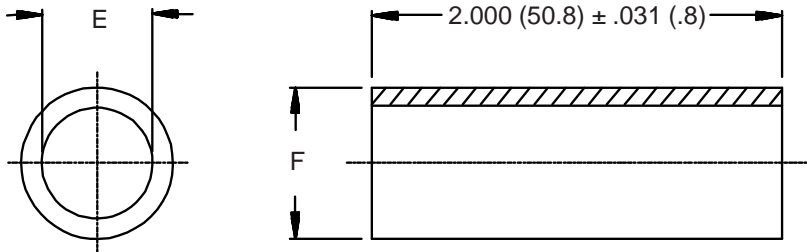


## MS3420 Telescoping Bushing

**MS3420-3**  
Basic Part No. \_\_\_\_\_  
Dash No. \_\_\_\_\_  
Material is Rubber per  
MIL-STD-417



**MS3420-3 L**  
Basic Part No. \_\_\_\_\_  
Dash No. \_\_\_\_\_  
Material \_\_\_\_\_  
A = Rubber per MIL-STD-417  
D = Silicone Rubber  
L = Fluorosilicone Rubber



### TABLE I

| Dash No. | A Dia        | B Dia        | C Dia        | D Dim        | E Dia        | F Dia        |
|----------|--------------|--------------|--------------|--------------|--------------|--------------|
| 3        | .130 (3.3)   | .210 (5.3)   | .379 (9.6)   | 2.875 (73.0) | .125 (3.2)   | .210 (5.3)   |
| 4        | .220 (5.6)   | .302 (7.7)   | .505 (12.8)  | 2.750 (69.9) | .219 (5.6)   | .302 (7.7)   |
| 6        | .312 (7.9)   | .427 (10.8)  | .619 (15.7)  | 2.625 (66.7) | .312 (7.9)   | .427 (10.8)  |
| 8        | .437 (11.1)  | .552 (14.0)  | .744 (18.9)  | 2.500 (63.5) | .438 (11.1)  | .531 (13.5)  |
| 10       | .562 (14.3)  | .615 (15.6)  | .889 (22.6)  | 2.375 (60.3) | .438 (11.1)  | .615 (15.6)  |
| 12       | .625 (15.9)  | .740 (18.8)  | 1.084 (27.5) | 2.250 (57.2) | .541 (13.7)  | .740 (18.8)  |
| 16       | .750 (19.1)  | .927 (23.5)  | 1.314 (33.4) | 2.125 (54.0) | .750 (19.1)  | .927 (23.5)  |
| 18       | n/a          | n/a          | n/a          | n/a          | .938 (23.8)  | 1.115 (28.3) |
| 20       | .937 (23.8)  | 1.240 (31.5) | 1.598 (40.6) | 2.000 (50.8) | .938 (23.8)  | 1.240 (31.5) |
| 24       | 1.250 (31.8) | 1.365 (34.7) | 1.847 (46.9) | 1.875 (47.6) | 1.125 (28.6) | 1.365 (34.7) |
| 28       | 1.375 (34.9) | 1.614 (41.0) | 2.085 (53.0) | 1.750 (44.5) | 1.250 (31.8) | 1.614 (41.0) |
| 32       | 1.624 (41.2) | 1.864 (47.3) | 2.335 (59.3) | 1.625 (41.3) | 1.625 (41.3) | 1.865 (47.4) |
| 40       | 1.874 (47.6) | 2.364 (60.0) | 2.835 (72.0) | 1.500 (38.1) | 1.875 (47.6) | 2.365 (60.1) |

1. For complete dimensions see applicable Military Specification.
2. Metric dimensions (mm) are indicated in parentheses.