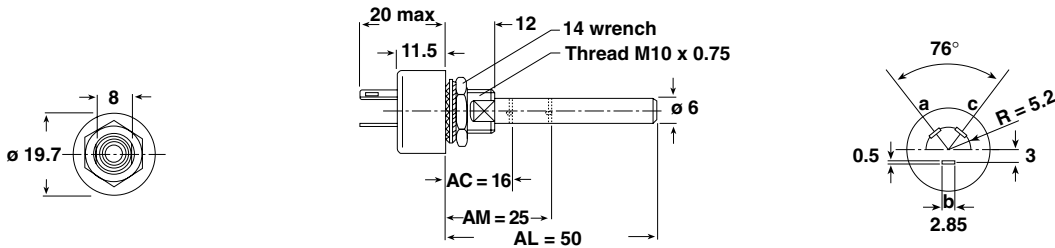
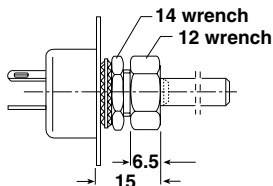
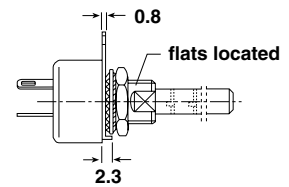
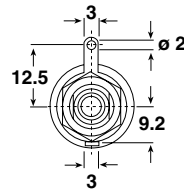
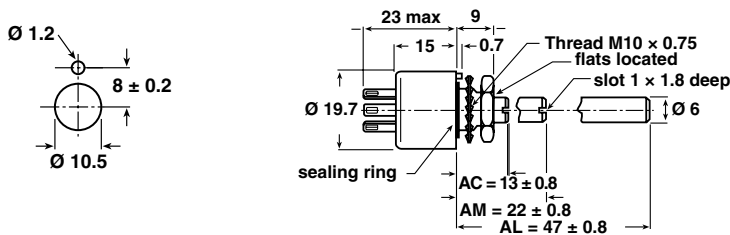
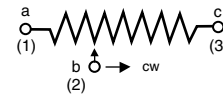


Fully Sealed Container Cermet Potentiometer Military and Professional Grade


FEATURES

- 3 Watt at 70 °C
- High power rating
- Low temperature coefficient (100 ppm/°C typical)
- Full sealing
- Mechanical strength
- Use of faston 2.86 connections
- Tests according to CECC 41 000


**RoHS
COMPLIANT**
DIMENSIONS in millimeters

PE30

DBAN SHAFT LOCKING

PE30 LPRP - WITH LOCATING PEG

Panel sealed version
PE30P - PE30PE
PE: Including locating peg

CIRCUIT DIAGRAM

 Tolerance unless otherwise specified ± 0.5

**SPECIAL FEATURES
COMMAND SHAFT**

Length is measured from the mounting surface to the free end of the shaft. The screwdriver slot is aligned with the wiper within $\pm 10^\circ$. Special shafts are available, in accordance to drawings supplied by customers. We recommend that customers should not machine shafts, in order to avoid damage. Bending or torsion of terminals should also be avoided.

PANEL SEALING: PE30P

The panel sealing device consists of a ring located in a slot on the potentiometer face. Sealing is obtained by tightening the ring against the panel when mounting the potentiometer.

LINEARITY

The typical linearity of linear variation law potentiometers is $\pm 5\%$. Guaranteed linearity on request. Consult VISHAY.

SHAFT LOCKING: DBAN

The shaft locking device consists of a tapered nut tightening a slotted notched washer against both bushing and shaft. DBAN tightening torque is 200 Ncm, shaft locking torque being 30 Ncm.

DBAN is also available with all special types.

This device is normally supplied in a separate bag. Can be pre-mounted on request.

LOCATING PEG: LPRP

Location is obtained by fitting a special washer in 2 holes drilled at 180° in the potentiometer face.

ELECTRICAL SPECIFICATIONS		
Resistive Element		cermet
Electrical Travel		$270^\circ \pm 10^\circ$
Resistance Range	Linear Law	22Ω to $10 \text{ M}\Omega$
	Logarithmic Laws	100Ω to $2.2 \text{ M}\Omega$
Standard series E3		1 - 2.2 - 4.7 and on request 1 - 2 - 5
Tolerance	Standard	$\pm 20\%$
	On Request	$\pm 10\% - \pm 5\%$
Power Rating	Linear	3 W at $+70^\circ\text{C}$
	Logarithmic	1.5 W at $+70^\circ\text{C}$
Temperature Coefficient		See Standard Resistance Element Data
Limiting Element Voltage (Linear Law)		300 V
Contact Resistance Variation		3 % R_n or 3Ω
End Resistance (Typical)		1Ω
Dielectric Strength (RMS)		2500 V
Insulation Resistance (500VDC)		$10^6 \text{ M}\Omega$

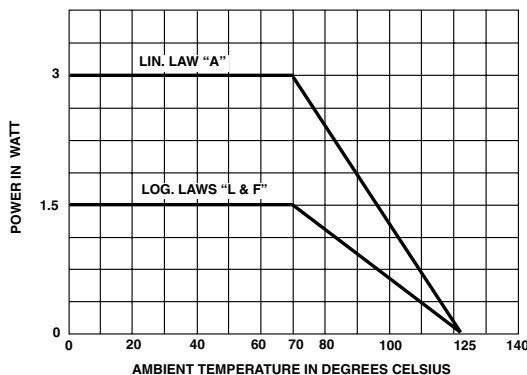
MECHANICAL SPECIFICATIONS

Mechanical Travel $300^\circ \pm 5^\circ$
 Operating Torque (max. Ncm) 3 typical
 End Stop Torque (max. Ncm) 70
 Max Tightening Torque of Mounting Nut (Ncm) 250
 Unit Weight (max. g) 23 to 32

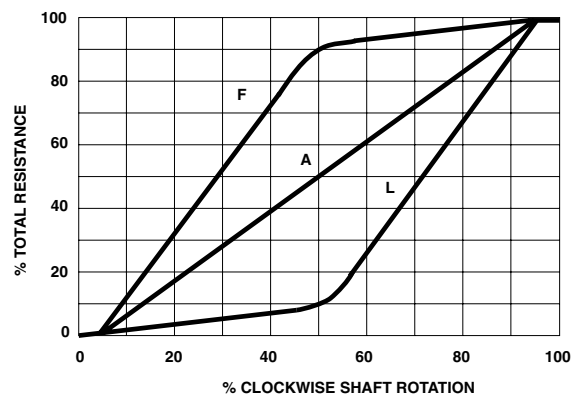
ENVIRONMENTAL SPECIFICATIONS

Temperature Range -55°C to $+125^\circ\text{C}$
 Climatic Category 55/125/56
 Sealing fully sealed container IP67

POWER RATING CHART



RESISTANCE LAWS





Fully Sealed Container Cermet Potentiometer Vishay Sfernice
Military and Professional Grade

PERFORMANCE						
CECC 41 301 - 002					TYPICAL VALUES AND DRIFTS	
TESTS	CONDITIONS	$\frac{\Delta RT}{RT}$ (%)	REQUIREMENTS	$\frac{\Delta R_{1-2}}{R_{1-2}}$ (%)	$\frac{\Delta RT}{RT}$ (%)	$\frac{\Delta R_{1-2}}{R_{1-2}}$ (%)
Climatic Sequence	Phase A dry heat 125 °C Phase B damp heat Phase C cold - 55 °C Phase D damp heat 5 cycles	± 10 %		± 10 %	± 0.5 %	± 1 %
Long Term Damp Heat	56 days 40 °C 93 % HR	± 10 %	Insulation resistance: > 100 MΩ		± 0.5 %	± 1 %
Rotational Life	25 000 cycles	± 10 %	Contact res. variation: < 7 % Rn		± 3 %	Contact res. variation: < 2 % Rn
Load Life	1000 h at rated power 90°/30° - ambient temp. 70 °C	± 10 %	Contact res. variation: < 7 % Rn		± 1 %	Contact res. variation: < 3 % Rn
Rapid Temperature Change	5 cycles - 55 °C at + 125 °C	± 3 %			± 0.5 %	
Shock	50 g at 11 ms 3 successive shocks in 3 directions	± 2 %			± 0.1 %	± 0.2 %
Vibration	10 - 55 Hz 0.75 mm or 10 g during 6 hours	± 2 %			± 0.1 %	± 0.2 %

STANDARD RESISTANCE ELEMENT DATA							
STANDARD RESISTANCE VALUES	LINEAR LAW			LOGS LAW			TCR -55 °C +125 °C ppm/°C
	MAX. POWER AT 70 °C	MAX. WORKING VOLTAGE	MAX. CUR. THROUGH WIPER	MAX. POWER AT 70 °C	MAX. WORKING VOLTAGE	MAX. CUR. THROUGH WIPER	
Ω	W	V	mA	W	V	mA	
22	3	8.12	369				200
47	3	11.87	252				
100	3	17.32	173				± 100
220	3	25.69	116				
470	3	37.55	79				
1K	3	57.44	54	1.5	38.7	38.7	
2.2K	3	81.24	37	1.5	57.4	26.1	
4.7K	3	118.74	25	1.5	83.9	17.9	
10K	3	173.20	17	1.5	122	12.2	
22K	3	256.9	11	1.5	181.6	8.25	
47K	1.91	300	6.3	1.5	265	5.64	
100K	0.90	300	3	0.9	300	3	
220K	0.41	300	1.36	0.41	300	1.36	
470K	0.19	300	0.63	0.19	300	0.63	
1M	0.09	300	0.30	0.09	300	0.30	
2.2M	0.04	300	0.13				
4.7M	0.02	300	0.06				
10M	0.01	300	0.03				

MARKING

- Printed:
- VISHAY trademark
 - model
 - NF types if applicable
 - ohmic value (in Ω, kΩ or MΩ)
 - tolerance (in %)
 - manufacturing date
 - marking of terminals 1, 2, 3 or a, b, c

ORDERING INFORMATION							
PE30	AC	200 kΩ	± 20 %	A	BO	e3	
MODEL	FEATURE	SHAFT LENGTH	OHMIC VALUE	TOLERANCE	LAW	PACKAGING	LEAD FINISH
P	Panel sealing*	AC 16 mm, slotted AM 25 mm, slotted AL 50 mm, plain		± 20 % standard ± 10 % on request	A Linear L clockwise logarithmic inverse F clockwise logarithmic		e3: pure Sn

* PE Panel sealing with locating peg (former designation E108)

SAP PART NUMBERING GUIDELINES																	
P	E	3	0	L	0	F	G	2	0	4	M	A	B				
MODEL			BUSHING OPTION		SHAFT		OHMIC VALUE			TOL	LAW	PACKAGING		SPECIAL (IF APPLICABLE)			

See the end of this data book for conversion tables



Disclaimer

All product specifications and data are subject to change without notice.

Vishay Intertechnology, Inc., its affiliates, agents, and employees, and all persons acting on its or their behalf (collectively, "Vishay"), disclaim any and all liability for any errors, inaccuracies or incompleteness contained herein or in any other disclosure relating to any product.

Vishay disclaims any and all liability arising out of the use or application of any product described herein or of any information provided herein to the maximum extent permitted by law. The product specifications do not expand or otherwise modify Vishay's terms and conditions of purchase, including but not limited to the warranty expressed therein, which apply to these products.

No license, express or implied, by estoppel or otherwise, to any intellectual property rights is granted by this document or by any conduct of Vishay.

The products shown herein are not designed for use in medical, life-saving, or life-sustaining applications unless otherwise expressly indicated. Customers using or selling Vishay products not expressly indicated for use in such applications do so entirely at their own risk and agree to fully indemnify Vishay for any damages arising or resulting from such use or sale. Please contact authorized Vishay personnel to obtain written terms and conditions regarding products designed for such applications.

Product names and markings noted herein may be trademarks of their respective owners.