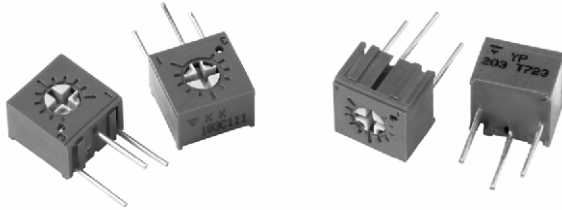


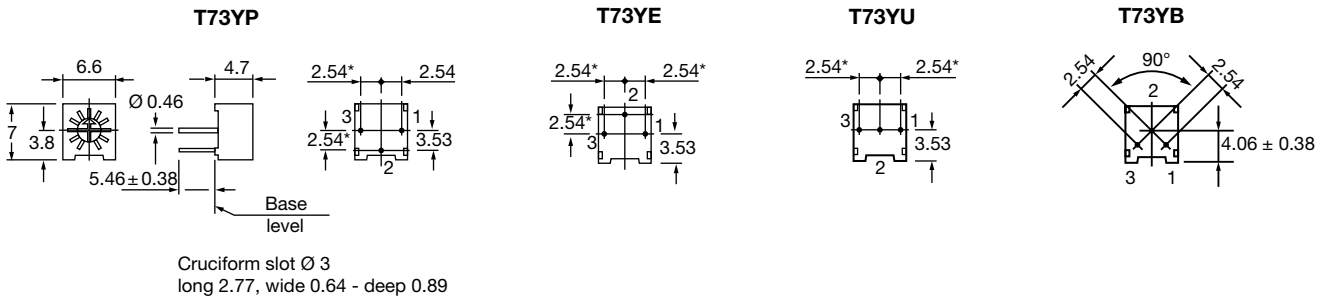
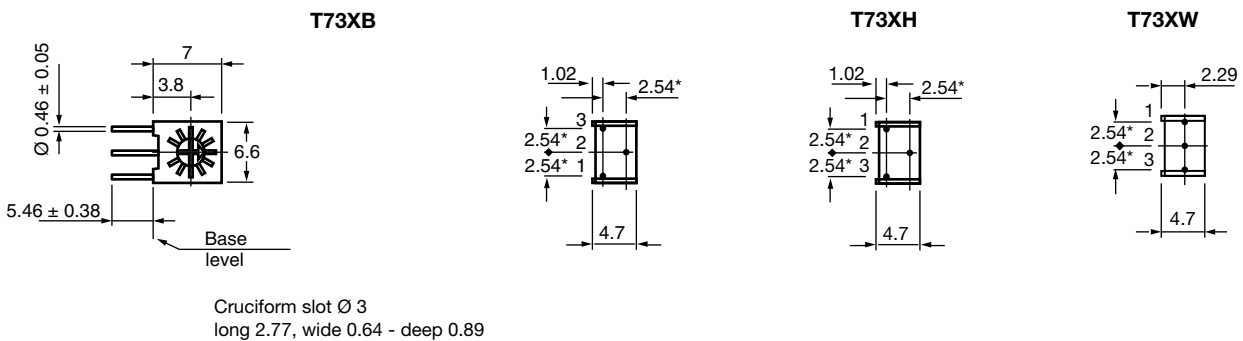
1/4" Square Single-Turn Cermet Sealed Trimmer

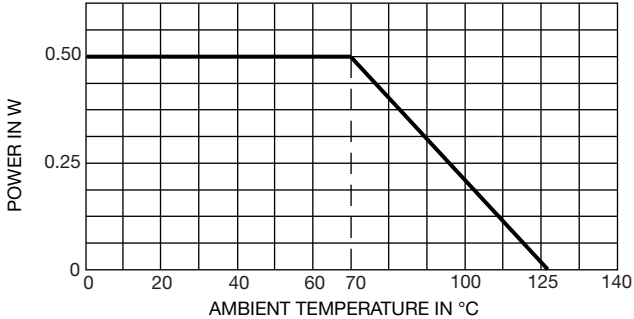
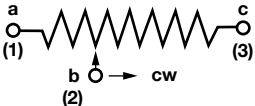

FEATURES

- Industrial grade
- Fully sealed
- Miniature package
- Rotor designed for automatic machine adjust interface
- Withstands harsh environments and immersion cleaning process
- Tests according to CECC 41000 or IEC 60393-1
- Compliant to RoHS Directive 2002/95/EC


RoHS
COMPLIANT

DIMENSIONS in millimeters (± 0.25 mm)

T73Y Top Adjust

T73X Side Adjust


| ELECTRICAL SPECIFICATIONS | |
|--|--|
| Resistive element | Cermet |
| Electrical travel | 240° nominal |
| Resistance range | 10 Ω to 2 M Ω |
| Standard series | 1 - 2 - 5 |
| Tolerance standard | 10 % |
| Power rating | <p>linear</p> <p>0.5 W at + 70 °C</p>  |
| Circuit diagram |  |
| Temperature coefficient | ± 100 ppm/°C |
| Limiting element voltage | 300 V |
| Contact resistance variation | 1 % R _n or 3 Ω max. whichever is greater |
| Absolute minimum resistance | 1 % R _n or 2 Ω max. whichever is greater |
| Adjustability | ± 0.05 % voltage ± 0.15 % resistance |
| Resolution | infinite |
| Insulation resistance (500 V _{DC}) | 10 ³ M Ω minimum |
| Dielectric strength | 900 V _{AC} sea level 350 V _{AC} 80 000 feet |

| MECHANICAL SPECIFICATIONS | |
|-----------------------------|-------------------|
| Mechanical travel | 270° |
| Operating torque (max. Ncm) | 2.1 |
| End stop torque (max. Ncm) | 4.9 |
| Unit weight (max. g) | 0.6 |
| Terminals | Pure Sn (code e3) |

| ENVIRONMENTAL SPECIFICATIONS | |
|------------------------------|---------------------|
| Temperature range | - 55 °C to + 125 °C |
| Climatic category | 55/100/56 |
| Sealing | Fully sealed - IP67 |



| PERFORMANCES | | | |
|-----------------|------------------------------|---------------------------|--|
| TESTS | CONDITIONS | TYPICAL VALUES AND DRIFTS | |
| LOAD LIFE | 1000 h - 0.5 W at + 70 °C | $\Delta R_T/R_T$ (%) | CRV < 3 Ω or 3 % whichever is greater |
| | | 3 % | |
| Shock | 100 g | ± 1 % | $\Delta V/V \leq \pm 1$ % |
| Vibration | 30 g | ± 1 % | $\Delta V/V \leq \pm 1$ % |
| Humidity | MIL-STD202 method 103 - 96 h | ± 2 % | i.R. 10 MΩ |
| Rotational life | 200 cycles | ± 4 % | CRV < 3 Ω or 3 % whichever is greater |

| STANDARD RESISTANCE ELEMENT DATA | | | | |
|----------------------------------|---------------------|----------------------|--------------------|--|
| STANDARD RESISTANCE VALUES | LINEAR LAW | | | TYPICAL TCR - 55 °C + 125 °C ppm/°C |
| | MAX. POWER AT 70 °C | MAX. WORKING VOLTAGE | MAX. WIPER CURRENT | |
| Ω | W | V | mA | |
| 10 | 0.50 | 2.2 | 224 | ± 100 |
| 20 | 0.50 | 3.2 | 160 | |
| 50 | 0.50 | 5.0 | 100 | |
| 100 | 0.50 | 7.1 | 70 | |
| 200 | 0.50 | 10.0 | 50 | |
| 500 | 0.50 | 15.8 | 32 | |
| 1K | 0.50 | 22.4 | 22 | |
| 2K | 0.50 | 31.6 | 16 | |
| 5K | 0.50 | 50 | 10 | |
| 10K | 0.50 | 70.7 | 7.1 | |
| 20K | 0.50 | 100 | 5.0 | |
| 50K | 0.50 | 158.1 | 3.2 | |
| 100K | 0.50 | 223.6 | 2.2 | |
| 200K | 0.45 | 300 | 1.5 | |
| 500K | 0.18 | 300 | 0.60 | |
| 1M | 0.09 | 300 | 0.30 | |
| 2M | 0.05 | 300 | 0.15 | |

| MARKING |
|---|
| <ul style="list-style-type: none"> • Vishay trademark • Resistance code • Terminal numbers • Date code • Model |

| PACKAGING |
|---|
| <ul style="list-style-type: none"> • In tube of 50 pieces code T20 (TU50) • On request: Tape and reel for style YU, code R32 (TR750) and style XW or YE code R15 (TR1000) |



| ORDERING INFORMATION (Part Number) | | | | | | | | | | | | | |
|------------------------------------|--|---|---------------------------------------|---|--------------------------------|---|---|---|---|---|--|--|--|
| T | 7 | 3 | Y | P | 5 0 4 | K | T | 2 | 0 | | | | |
| Model | STYLE | | OHMIC VALUE | | TOLERANCE | | PACKAGING | | | SPECIAL NUMBER | | | |
| T73 | XF XH XW XX YB YE YM YP YU | | From 10 Ω to 2.2 MΩ 103 = 10 kΩ | | K = 10 % on request J = 5 % | | T20 = Tube 50 pieces On request: R15 = reel 1000 pieces for style XW or YE R32 = Reel 750 for style YU | | | (If applicable) Given by Vishay for custom design | | | |

| DESCRIPTION (for information only) | | | | | |
|------------------------------------|-------|-------|-----------|-----------|-------------|
| T73 | YP | 500K | 10 % | TU | e3 |
| MODEL | STYLE | VALUE | TOLERANCE | PACKAGING | LEAD FINISH |



Disclaimer

All product specifications and data are subject to change without notice.

Vishay Intertechnology, Inc., its affiliates, agents, and employees, and all persons acting on its or their behalf (collectively, "Vishay"), disclaim any and all liability for any errors, inaccuracies or incompleteness contained herein or in any other disclosure relating to any product.

Vishay disclaims any and all liability arising out of the use or application of any product described herein or of any information provided herein to the maximum extent permitted by law. The product specifications do not expand or otherwise modify Vishay's terms and conditions of purchase, including but not limited to the warranty expressed therein, which apply to these products.

No license, express or implied, by estoppel or otherwise, to any intellectual property rights is granted by this document or by any conduct of Vishay.

The products shown herein are not designed for use in medical, life-saving, or life-sustaining applications unless otherwise expressly indicated. Customers using or selling Vishay products not expressly indicated for use in such applications do so entirely at their own risk and agree to fully indemnify Vishay for any damages arising or resulting from such use or sale. Please contact authorized Vishay personnel to obtain written terms and conditions regarding products designed for such applications.

Product names and markings noted herein may be trademarks of their respective owners.