

UDS-10-IAP Quick Start

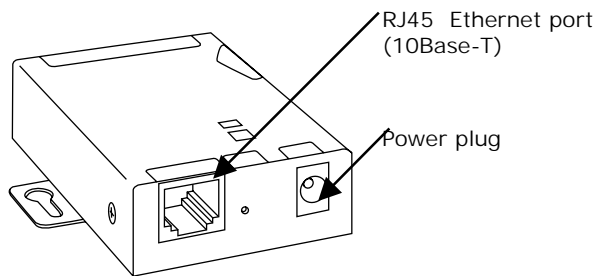
The Unit

UDS-10-IAP is a member of the Lantronix IAP (Industrial Automation Platform) family of Device Servers. IAP devices allow you to install the protocol suitable for your automation application.

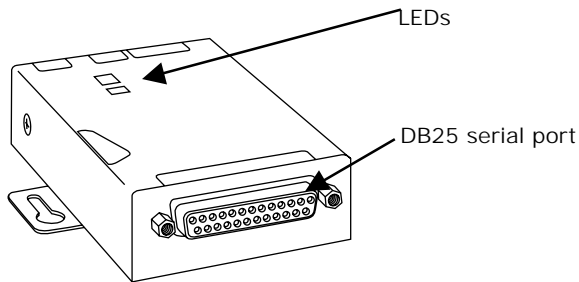
Follow the instructions below to connect your UDS-10-IAP and install the protocol of your choice. After you install the protocol and configure the unit, you can Ethernet-enable a serial device by connecting it to the serial port. (See the UDS-10-IAP User Guide on the APS CD.)

Quick Connect

Network Interface



Serial Interface



1. Connect the UDS-10-IAP to the network through the Ethernet port. (The unit must be on the same network as your computer.)
2. Connect power (9-30 VDC).
3. Verify that the green Link LED is lit.


Install a Protocol

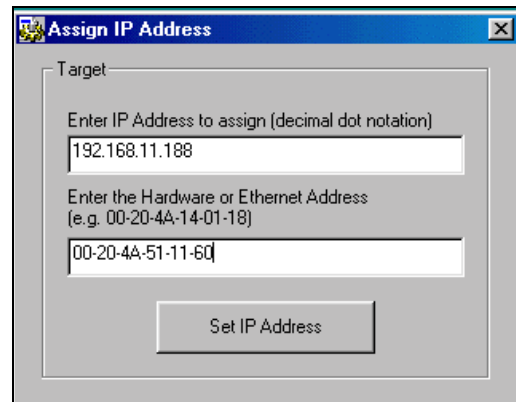
The Device Server comes with the Standard Tunneling protocol installed. Follow these steps to install a different protocol such as MODBUS or DF1.

Step 1: Access the Firmware

1. Insert the APS CD into your CD-ROM drive.
2. Follow the prompts in the installation wizard. The Configuration Utility Window displays.


Step 2: Assign an IP Address

1. Click the **Assign IP** icon.  The Assign IP Address window displays.



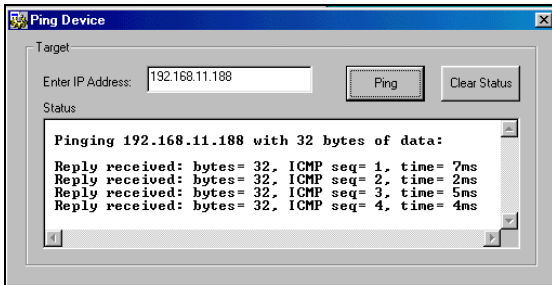
2. In the **Enter IP Address to assign** field, type the IP address of the Device Server (XXX.XXX.XXX.XXX format).
3. In the **Enter the Hardware or Ethernet Address** field, type the Ethernet address (MAC address) listed on the Device Server label (on the bottom of the unit).
4. Click the **Set IP Address** button. The *Assign IP Successful* message displays. Click **OK**.

Step 3: Ping the Device Server


1. Click the **Ping** icon.  The Ping Device window displays.

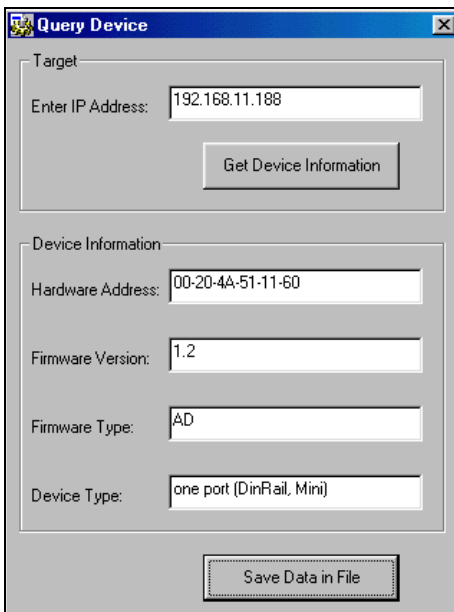


2. Click the **Ping** button. The *Reply received* message displays in the window, indicating that the IP address has been entered successfully.




Step 4: Query the Device Server

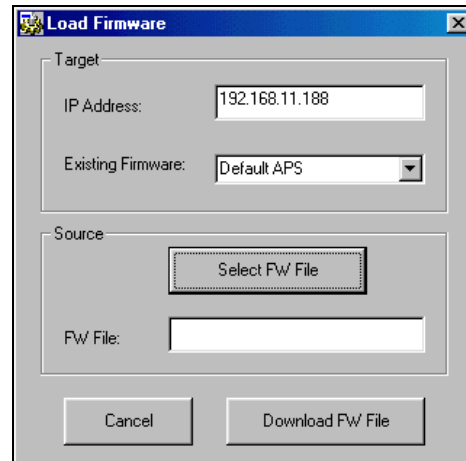
1. Click the **Device Info** icon . The Query Device window displays. The IP address displays at the top.



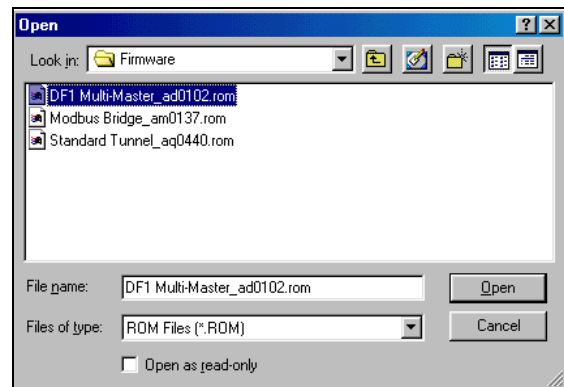
2. Click the **Get Device Information** button to display information. **Firmware Type** displays the protocol that is currently loaded on the device.

Step 5: Load the Protocol

1. Click the **Load** icon . The Load Firmware window displays.



2. Click **Select FW File**. A list of firmware files displays.




3. Select the desired protocol and click **Open**. The selected file displays in the FW File field.
4. Click **Download FW File**. The *File download successful* message displays. Click **OK**.

Note: Run another query to confirm that the protocol has been installed.

Step 6: Telnet to the Device Server

To view or update the Device Server configuration, open a Telnet connection.

1. Click the **Telnet** icon . The Configuration Set-Up window for the protocol displays.
2. Continue with the appropriate configuration procedure for the protocol you installed. (Instructions are on the APS CD.)