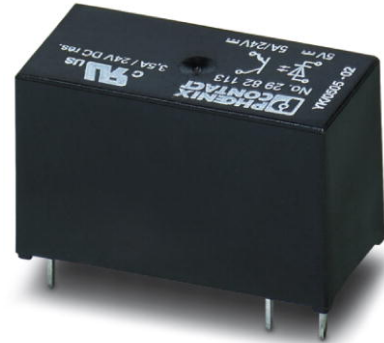


OPT-60DC/ 24DC/ 5


Order No.: 2982126

The illustration shows the version OPT-24DC/24DC/5



<http://eshop.phoenixcontact.de/phoenix/treeViewClick.do?UID=2982126>

Pluggable miniature optocouplers, power optocouplers, input: 60 V DC, output: 3-33 V DC/5 A

Commercial data	
GTIN (EAN)	 4 017918 989767
Note	Made-to-order
sales group	G151
Pack	10 pcs.
Customs tariff	85364190
Catalog page information	Page 95 (IF-2009)

Product notes

WEEE/RoHS-compliant since:
08/28/2006



<http://www.download.phoenixcontact.com>
Please note that the data given here has been taken from the online catalog. For comprehensive information and data, please refer to the user documentation. The General Terms and Conditions of Use apply to Internet downloads.

Technical data

Input data	
Nominal input voltage U_N	60 V DC
Input voltage range in reference to U_N	0.9 ... 1.1
Switching threshold "0" signal, voltage	≤ 20 V DC
Switching threshold "1" signal voltage	≥ 35 V DC

Typical input current at U_N	3 mA
Typical response time	25 μ s
Typical turn-off time	400 μ s
Type of protection	Protection against polarity reversal
Protective circuit/component	Polarity protection diode
Transmission frequency	300 Hz

Output data

Output nominal voltage	24 V DC
Output nominal voltage range	3 V DC ... 33 V DC
Limiting continuous current	5 A (see derating curve)
Maximum inrush current	15 A (10 ms)
Surge voltage protection	> 33 V DC
Voltage drop at max. limiting continuous current	\leq 200 mV
Output circuit	2-wire, floating
Type of protection	Protection against polarity reversal
	Surge protection
Protective circuit/component	Polarity protection diode

General data

Width	12.7 mm
Height	29 mm
Depth	15.7 mm
Ambient temperature (operation)	-25 °C ... 60 °C
Ambient temperature (storage/transport)	-25 °C ... 70 °C
Mounting position	Any
Assembly instructions	In rows with zero spacing
Operating mode	100% operating factor
Degree of protection	IP67
Inflammability class acc. to UL 94	V0
Name	Standards/regulations
Standards/regulations	IEC 60664
	EN 50178
	IEC 62103
Rated surge voltage / insulation	Basic insulation
Rated insulation voltage	100 V DC

Pollution degree	2
Surge voltage category	III

Certificates / Approvals



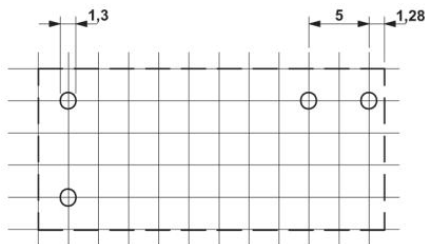
Certification CUL, UL

Additional products

Item	Designation	Description
General		
2967316	PLC-BSC- 60DC/21-21	14 mm PLC basic terminal blocks with screw connection method, input voltage 60 V DC(without relay or optocoupler)
2967808	PLC-BSC- 60DC/21HC	14 mm PLC-HC basic terminal blocks with screw connection method, input voltage 60 V DC(without relay or optocoupler)
2912468	PLC-BSP- 60DC/21-21	14 mm PLC basic terminal blocks with spring-cage connection method, input voltage 60 V DC(without relay or optocoupler)
2912374	PLC-BSP- 60DC/21HC	14 mm PLC basic terminal blocks with spring-cage connection method, input voltage 60 V DC(without relay or optocoupler)

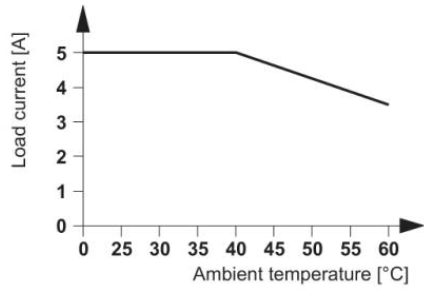
Diagrams/Drawings

Drilling plan/solder pad geometry

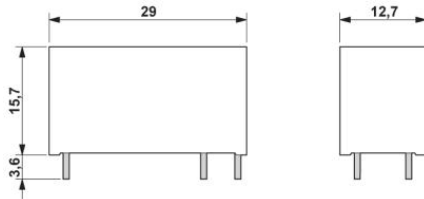


Basic pitch 2.5 mm

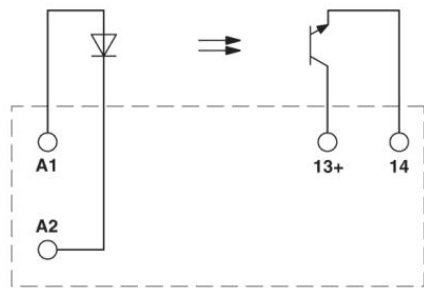
Diagram



Dimensioned drawing



Circuit diagram



Pin assignments: View of the connections

Address

PHOENIX CONTACT Inc., USA
586 Fulling Mill Road
Middletown, PA 17057, USA
Phone (800) 888-7388
Fax (717) 944-1625
<http://www.phoenixcon.com>



© 2011 Phoenix Contact
Technical modifications reserved;