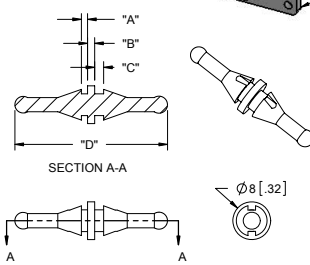
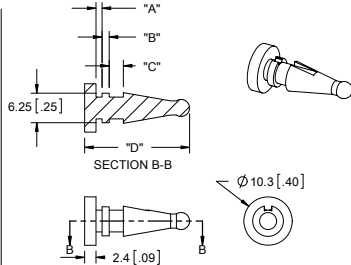


PART NO.	MATERIAL	COLOR	DIM. "A"	DIM. "B"	DIM. "C"	DIM. "D"	STYLE NO.
FM-1	EPDM RUBBER, 30 SHORE A (RMS-166)	BLACK	1.3 [05]	1.5 [06]	1.9 [07]	32.3 [1.27]	1
FM-2	EPDM RUBBER, 40 SHORE A (RMS-180)				3 [12]	22.2 [88]	2
FM-3	EPDM RUBBER, 30 SHORE A (RMS-166)						
FM-4	EPDM RUBBER, 40 SHORE A (RMS-180)		0.7 [03]		18.5 [73]	56 [2.20]	3
FM-5	SILICONE RUBBER, 40 SHORE A (RMS-316)		2.5 [10]	2 [08]	14 [55]	53.8 [2.12]	
FM-6	SILICONE RUBBER, 40 SHORE A (RMS-316)		0.7 [03]	1.5 [06]	24 [94]	73 [2.87]	
FM-7	SILICONE RUBBER, 40 SHORE A (RMS-316)						4
FM-8	EPDM RUBBER, 30 SHORE A (RMS-166)		N/A	N/A	4.3 [17]	21 [83]	
FM-9	EPDM RUBBER, 40 SHORE A (RMS-180)						



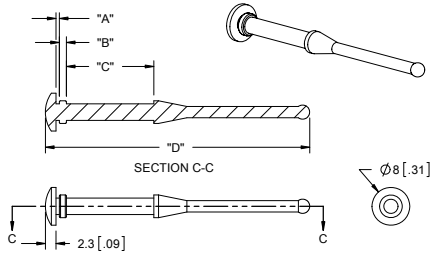
TO PULL THROUGH A  $\varnothing 5 \pm 1 [1.97 \pm 0.039]$  HOLE, WITH MAXIMUM 1.4 [055] PANEL AND 2 [079] FAN THICKNESS

STYLE 1



TO PULL THROUGH A  $\varnothing 5 \pm 1 [1.97 \pm 0.039]$  HOLE, WITH MAXIMUM 1.4 [055] PANEL AND 3.1 [122] FAN THICKNESS

STYLE 2

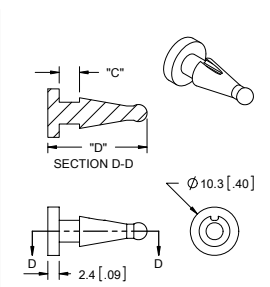


FM-5: TO PULL THROUGH A  $\varnothing 3.5 \pm 1 [138 \pm 0.039]$  HOLE, WITH MAXIMUM 0.8 [031] PANEL AND 20  $\pm 0.5 [787]$  FAN THICKNESS.

FM-6: TO PULL THROUGH A  $\varnothing 4.3 \pm 0.2 [161 \pm 0.008]$  HOLE, WITH MAXIMUM 3 [118] PANEL AND 15 [591] FAN THICKNESS.

FM-7: TO PULL THROUGH A  $\varnothing 3.5 \pm 1 [138 \pm 0.039]$  HOLE, WITH MAXIMUM 0.8 [031] PANEL AND 25-28 [98-1.10] FAN THICKNESS.

STYLE 3



TO PULL THROUGH A  $\varnothing 5 \pm 1 [1.97 \pm 0.039]$  HOLE, WITH 5.4 [213] MAXIMUM TOTAL THICKNESS

STYLE 4

NOTES:  
1. ALTERNATE UNITS FOR REFERENCE ONLY

TITLE: FAN MOUNT				DWG IN mm [IN]		FINAL		PRINT TYPE	
CREATED USING SOLIDWORKS	FILE #: FM-X	DWN: SK	APP: SK	PART #		PRINT TYPE		CA	
TOLERANCES UNLESS NOTED	SHEET: 1 OF 1	SHEET SIZE: B	DT: 08/11/06	CHKD: SJ	SEE TABLE				
0-10 $\pm 0.1$	RE: RICHCO, INC.		RICHCO, INC.						
10.01-30 $\pm 0.3$			ENG@RICHCO-INC.COM						
30.01-50 $\pm 0.5$			(773) 539-4060						
ANG $\pm 1^\circ$									
REV. DESCRIPTION	ENGR. DATE								