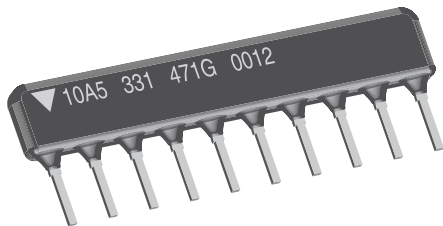


## Thick Film Resistor Networks, Single-In-Line, Conformal Coated SIP



### FEATURES

- Isolated, bussed and dual terminator schematics available
- Body height: "A" profile = 0.195" (4.95 mm) and "B" profile = 0.295" (7.50 mm) standard; custom "C" profile = 0.350" (8.89 mm) also available
- "A" profile standard in 4 thru 12 pins
- Thick film resistive elements
- Reduces total assembly costs
- Resistor elements protected by tough epoxy conformal coating
- Wide resistance range (10 Ω to 2.2 MΩ)
- Available in bulk pack as standard; optional tube pack is also available
- Meets EIA/ECA-CB23 rev. G whisker test requirements for Class 1A products
- Compliant to RoHS directive 2002/95/EC



RoHS\*  
COMPLIANT

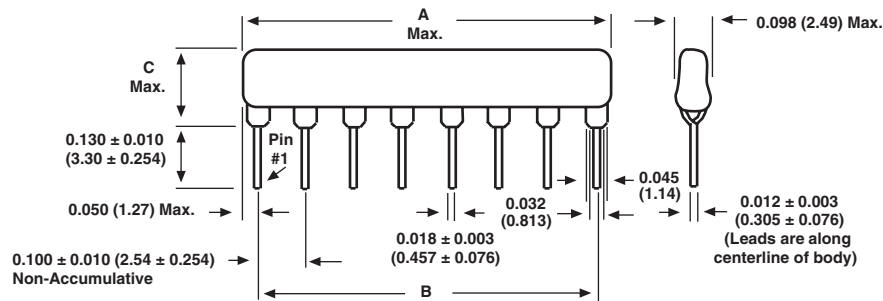
| STANDARD ELECTRICAL SPECIFICATIONS |                |  |                       |  |                            |  |  |
|------------------------------------|----------------|--|-----------------------|--|----------------------------|--|--|
| GLOBAL MODEL/ SCHEMATIC            | PACKAGE HEIGHT | POWER RATING ELEMENT <sup>(1)</sup><br><i>P</i> <sub>70 °C W</sub> | RESISTANCE RANGE<br>Ω | TEMP. COEFFICIENT<br>(- 55 °C to + 125 °C)<br>± ppm/°C | TOL. <sup>(2)</sup><br>± % | TCR TRACKING <sup>(1)</sup><br>(- 55 °C to + 125 °C)<br>± ppm/°C | MAX. WORKING VOLTAGE <sup>(3)</sup><br>V <sub>DC</sub> |
| CSCxxx01                           | A              | 0.20   | 10 to 50              | 250  | 1, 2, 5                    | 50   | 100  |
|                                    | B              | 0.25   | 50.1 to 2.2M          | 100  |                            |  |  |
| CSCxxx03                           | A              | 0.30   | 10 to 50              | 250  | 1, 2, 5                    | 50   | 100  |
|                                    | B              | 0.40   | 50.1 to 2.2M          | 100  |                            |  |  |
| CSCxxx05                           | A              | 0.20   | 10 to 50              | 250  | 1, 2, 5                    | 150  | 100  |
|                                    | B              | 0.25   | 50.1 to 2.2M          | 100  |                            |  |  |

### Notes

- See derating curves for package power rating
- <sup>(1)</sup> For resistor power ratings at + 25 °C see derating curves
- <sup>(2)</sup> ± 2 % standard, ± 1 % and ± 5 % available
- <sup>(3)</sup> Continuous working voltage shall be  $\sqrt{P \times R}$  or maximum working voltage, whichever is less

| GLOBAL PART NUMBER INFORMATION  |   |  |  |  |  |   |  |   |   |   |   |   |   |   |  |  |  |
|---|---|--|--|--|--|---|--|---|---|---|---|---|---|---|--|--|--|
| <b>New Global Part Numbering: CSC08A03100RGEK (preferred part number format)</b>      |   |  |  |  |  |   |  |   |   |   |   |   |   |   |  |  |  |
| C   | S   | C  | 0  | 8  | A  | 0   | 3  | 1 | 0 | 0 | R | G | E | K |  |  |  |
| GLOBAL MODEL<br><b>CSC</b>  | PIN COUNT<br>04 to 12 pin available<br><b>04</b> = 4 pin<br><b>08</b> = 8 pin<br><b>12</b> = 12 pin | PACKAGE HEIGHT<br><b>A</b> = "A" profile<br><b>B</b> = "B" profile | SCHEMATIC<br><b>01</b> = Bussed<br><b>03</b> = Isolated<br><b>00</b> = Special | RESISTANCE VALUE<br><b>R</b> = Ω<br><b>K</b> = kΩ<br><b>M</b> = MΩ<br><b>10R0</b> = 10 Ω<br><b>680K</b> = 680 kΩ<br><b>1M00</b> = 1.0 MΩ | TOLERANCE CODE<br><b>F</b> = ± 1 %<br><b>G</b> = ± 2 %<br><b>J</b> = ± 5 %<br><b>S</b> = Special | PACKAGING<br><b>EK</b> = Lead (Pb)-free, bulk<br><b>PA</b> = Tin/lead, bulk | SPECIAL<br>Blank = Standard (Dash Number) (Up to 3 digits) From <b>1</b> to <b>999</b> as applicable |   |   |   |   |   |   |   |  |  |  |
| <b>Historical Part Number example: CSC08A03101GEK (will continue to be accepted)</b>  |   |  |  |  |  |   |  |   |   |   |   |   |   |   |  |  |  |
| CSC   | 08  | A  | 03   | 101  | G  | EK  |  |   |   |   |   |   |   |   |  |  |  |
| HISTORICAL MODEL  | PIN COUNT   | PACKAGE HEIGHT   | SCHEMATIC  | RESISTANCE VALUE   | TOLERANCE CODE   | PACKAGING   |  |   |   |   |   |   |   |   |  |  |  |
| <b>New Global Part Numbering: CSC08A05131AGEK (preferred part number format)</b>      |   |  |  |  |  |   |  |   |   |   |   |   |   |   |  |  |  |
| C   | S   | C  | 0  | 8  | A  | 0   | 5  | 1 | 3 | 1 | A | G | E | K |  |  |  |
| GLOBAL MODEL<br><b>CSC</b>  | PIN COUNT<br>04 to 12 pin available<br><b>04</b> = 4 pin<br><b>08</b> = 8 pin<br><b>12</b> = 12 pin | PACKAGE HEIGHT<br><b>A</b> = "A" profile<br><b>B</b> = "B" profile | SCHEMATIC<br><b>05</b> = Dual terminator                                       | RESISTANCE VALUE<br>3 digit impedance code, followed by alpha modifier (see impedance codes table)                                       | TOLERANCE CODE<br><b>F</b> = ± 1 %<br><b>G</b> = ± 2 %<br><b>J</b> = ± 5 %                       | PACKAGING<br><b>EK</b> = Lead (Pb)-free, bulk<br><b>PA</b> = Tin/lead, bulk | SPECIAL<br>Blank = Standard (Dash Number) (Up to 3 digits) From <b>1</b> to <b>999</b> as applicable |   |   |   |   |   |   |   |  |  |  |
| <b>Historical Part Number example: CSC08A05131AGEK (will continue to be accepted)</b> |   |  |  |  |  |   |  |   |   |   |   |   |   |   |  |  |  |
| CSC   | 08  | A  | 05   | 221  | 331  | G   | EK   |   |   |   |   |   |   |   |  |  |  |
| HISTORICAL MODEL  | PIN COUNT   | PACKAGE HEIGHT   | SCHEMATIC  | RESISTANCE VALUE 1   | RESISTANCE VALUE 2   | TOLERANCE CODE  | PACKAGING  |   |   |   |   |   |   |   |  |  |  |

| TECHNICAL SPECIFICATIONS            |             |                  |
|-------------------------------------|-------------|------------------|
| PARAMETER                           | UNIT        | CSC SERIES       |
| Voltage Coefficient of Resistance   | $V_{eff}$   | < 50 ppm typical |
| Dielectric Strength                 | $V_{AC}$    | 200              |
| Isolation Resistance (03 Schematic) | $\Omega$    | > 100M           |
| Operating Temperature Range         | $^{\circ}C$ | - 55 to + 125    |

**DIMENSIONS** in inches (millimeters)


| 01 SCHEMATIC | GLOBAL MODEL | NUMBER OF RESISTORS | A (Maximum)   | B             | C (Maximum)   |  |
|--------------|--------------|---------------------|---------------|---------------|---------------|--|
|              |              | CSC04               | 3             | 0.390 (9.91)  | 0.300 (7.62)  | "A" profile = 0.195 (4.95)<br>"B" profile = 0.295 (7.50) |
| CSC05        |              | 4                   | 0.490 (12.45) | 0.400 (10.16) |               |  |
| CSC06        |              | 5                   | 0.590 (14.99) | 0.500 (12.70) |               |  |
| CSC07        |              | 6                   | 0.690 (17.53) | 0.600 (15.24) |               |  |
| CSC08        |              | 7                   | 0.790 (20.07) | 0.700 (17.78) |               |  |
| CSC09        |              | 8                   | 0.890 (22.61) | 0.800 (20.32) |               |  |
| CSC10        |              | 9                   | 0.990 (25.15) | 0.900 (22.86) |               |  |
| CSC11        |              | 10                  | 1.09 (27.69)  | 1.00 (25.40)  |               |  |
| CSC12        |              | 11                  | 1.19 (30.23)  | 1.100 (27.94) |               |  |
| 03 SCHEMATIC | GLOBAL MODEL | NUMBER OF RESISTORS | A (Maximum)   | B             | C (Maximum)   |  |
|              |              | CSC04               | 2             | 0.390 (9.91)  | 0.300 (7.62)  | "A" profile = 0.195 (4.95)<br>"B" profile = 0.295 (7.50) |
|              |              | CSC06               | 3             | 0.590 (14.99) | 0.500 (12.70) |  |
|              |              | CSC08               | 4             | 0.790 (20.07) | 0.700 (17.78) |  |
|              |              | CSC10               | 5             | 0.990 (25.15) | 0.900 (22.86) |  |
|              |              | CSC12               | 6             | 1.19 (30.23)  | 1.100 (27.94) |  |
| CSC12        |              | 6                   | 1.19 (30.23)  | 1.100 (27.94) |               |  |
| 05 SCHEMATIC | GLOBAL MODEL | NUMBER OF RESISTORS | A (Maximum)   | B             | C (Maximum)   |  |
|              |              | CSC04               | 4             | 0.390 (9.91)  | 0.300 (7.62)  | "A" profile = 0.195 (4.95)<br>"B" profile = 0.295 (7.50) |
|              |              | CSC05               | 6             | 0.490 (12.45) | 0.400 (10.16) |  |
|              |              | CSC06               | 8             | 0.590 (14.99) | 0.500 (12.70) |  |
|              |              | CSC07               | 10            | 0.690 (17.53) | 0.600 (15.24) |  |
|              |              | CSC08               | 12            | 0.790 (20.07) | 0.700 (17.78) |  |
|              |              | CSC09               | 14            | 0.890 (22.61) | 0.800 (20.32) |  |
|              |              | CSC10               | 16            | 0.990 (25.15) | 0.900 (22.86) |  |
|              |              | CSC11               | 18            | 1.09 (27.69)  | 1.00 (25.40)  |  |
|              |              | CSC12               | 20            | 1.19 (30.23)  | 1.100 (27.94) |  |

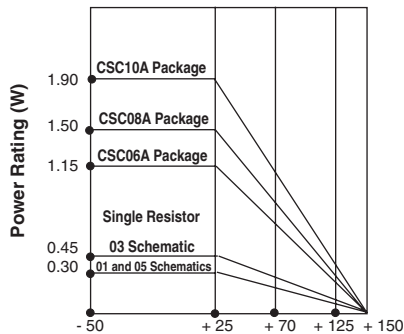
| MECHANICAL SPECIFICATIONS      |  |
|--------------------------------|--|
| Marking Resistance to Solvents | Permanency testing per MIL-STD-202, method 215 |
| Solderability                  | Per MIL-STD-202, method 208E, RMA flux         |
| Body                           | High alumina, epoxy coated                     |
| Terminals                      | Solder plated leads                            |

**STOCKED RESISTANCE VALUES IN OHMS (“G” TOLERANCE)**

Standard E-24 resistance values stocked. Consult factory.  
Many dual terminator resistance values stocked. Consult factory.

| IMPEDANCE CODES |                    |                    |      |                    |                    |
|-----------------|--------------------|--------------------|------|--------------------|--------------------|
| CODE            | R <sub>1</sub> (Ω) | R <sub>2</sub> (Ω) | CODE | R <sub>1</sub> (Ω) | R <sub>2</sub> (Ω) |
| 500B            | 82                 | 130                | 141A | 270                | 270                |
| 750B            | 120                | 200                | 181A | 330                | 390                |
| 800C            | 130                | 210                | 191A | 330                | 470                |
| 990A            | 160                | 260                | 221B | 330                | 680                |
| 101C            | 180                | 240                | 281B | 560                | 560                |
| 111C            | 180                | 270                | 381B | 560                | 1.2K               |
| 121B            | 180                | 390                | 501C | 620                | 2.7K               |
| 121C            | 220                | 270                | 102A | 1.5K               | 3.3K               |
| 131A            | 220                | 330                | 202B | 3K                 | 6.2K               |

**”A” Profile**

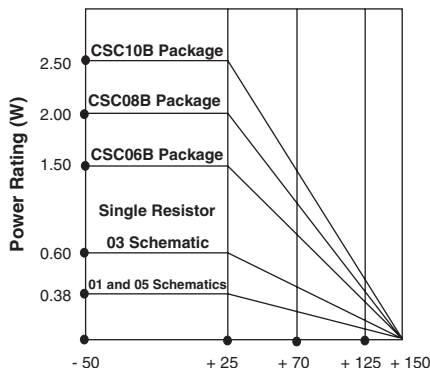


Derating Ambient Temperature °C

**”A” PROFILE + 70 °C PACKAGE RATINGS**

|        |        |
|--------|--------|
| CSC12A | 1.5 W  |
| CSC11A | 1.37 W |
| CSC10A | 1.25 W |
| CSC09A | 1.12 W |
| CSC08A | 1.00 W |
| CSC07A | 0.87 W |
| CSC06A | 0.75 W |
| CSC05A | 0.62 W |
| CSC04A | 0.40 W |

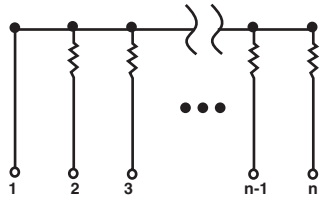
**”B” Profile**



Derating Ambient Temperature °C

**”B” PROFILE + 70 °C PACKAGE RATINGS**

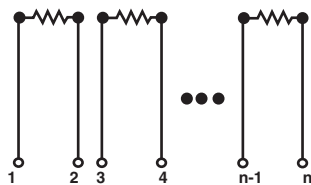
|        |        |
|--------|--------|
| CSC12B | 1.90 W |
| CSC11B | 1.75 W |
| CSC10B | 1.60 W |
| CSC09B | 1.45 W |
| CSC08B | 1.30 W |
| CSC07B | 1.15 W |
| CSC06B | 1.00 W |
| CSC05B | 0.80 W |
| CSC04B | 0.60 W |

**CIRCUIT APPLICATIONS**
**01 Schematic**

**Bussed**

The CSCxxx01 single-in-line resistor networks provide the user with nominally equal resistors, each connected to a common pin (pin no. 1). Commonly used in the following applications:

- “Wired OR” Pull-up
- Power Gate Pull-up
- MOS/ROM Pull-up/Pull-down
- Open Collector Pull-up
- TTL Input Pull-down
- TTL Unused Gate Pull-up

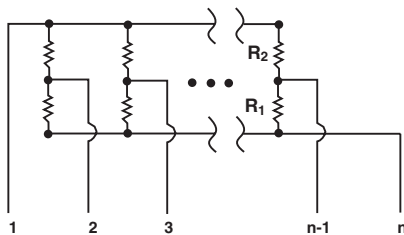
\* “A” profile standard, “B” Profile available.

**03 Schematic**

**Isolated**

The CSCxxx03 single-in-line resistor networks provide the user with nominally equal resistors. Each resistor is isolated from all others. Commonly used in the following applications:

- “Wired OR” Pull-up
- Power Driven Pull-up
- Power Gate Pull-up
- Line Termination
- Long-Line Impedance Balancing
- LED Current Limiting
- ECL Output Pull-down
- TTL Input Pull-down

\* “A” Profile standard, “B” Profile available.

**05 Schematic**

**Dual Terminator**

The CSCxxx05 circuits contain series pairs of resistors. Each series pair is connected between two common lines. The junction of these resistor pairs is connected to the input terminals. The 05 circuits are designed for TTL dual-line termination and pulse squaring.

\* “A” profile standard, “B” Profile available.

**PERFORMANCE**

| TEST                            | CONDITIONS   | MAX. $\Delta R$ (TYPICAL TEST LOTS) |
|---------------------------------|--|-------------------------------------|
| Thermal Shock                   | 5 cycles between - 65 °C and + 125 °C  | $\pm 0.50 \% \Delta R$              |
| Short Time Overload             | 2.5 x rated working voltage, 5 s   | $\pm 0.25 \% \Delta R$              |
| Low Temperature Operation       | 45 min at full rated working voltage at - 65 °C  | $\pm 0.25 \% \Delta R$              |
| Moisture Resistance             | 240 h with humidity ranging from 80 % RH to 98 % RH  | $\pm 1.00 \% \Delta R$              |
| Resistance to Soldering Heat    | Leads immersed in + 350 °C solder to within 1/16" of body for 3 s  | $\pm 0.25 \% \Delta R$              |
| Shock                           | Total of 18 shocks at 100 g's  | $\pm 0.25 \% \Delta R$              |
| Vibration                       | 12 h at maximum of 20 g's between 10 Hz and 2000 Hz  | $\pm 0.25 \% \Delta R$              |
| Load Life                       | 1000 h at + 70 °C, rated power applied 1.5 h “ON”, 0.5 h “OFF” for full 1000 h period. Derated according to the curve. | $\pm 1.00 \% \Delta R$              |
| Terminal Strength               | 4.5 pound pull for 30 s  | $\pm 0.25 \% \Delta R$              |
| Insulation Resistance           | 10 000 M $\Omega$ (minimum)  | -                                   |
| Dielectric Withstanding Voltage | No evidence of arcing or damage (200 V <sub>RMS</sub> for 1 min)   | -                                   |



## Disclaimer

All product specifications and data are subject to change without notice.

Vishay Intertechnology, Inc., its affiliates, agents, and employees, and all persons acting on its or their behalf (collectively, "Vishay"), disclaim any and all liability for any errors, inaccuracies or incompleteness contained herein or in any other disclosure relating to any product.

Vishay disclaims any and all liability arising out of the use or application of any product described herein or of any information provided herein to the maximum extent permitted by law. The product specifications do not expand or otherwise modify Vishay's terms and conditions of purchase, including but not limited to the warranty expressed therein, which apply to these products.

No license, express or implied, by estoppel or otherwise, to any intellectual property rights is granted by this document or by any conduct of Vishay.

The products shown herein are not designed for use in medical, life-saving, or life-sustaining applications unless otherwise expressly indicated. Customers using or selling Vishay products not expressly indicated for use in such applications do so entirely at their own risk and agree to fully indemnify Vishay for any damages arising or resulting from such use or sale. Please contact authorized Vishay personnel to obtain written terms and conditions regarding products designed for such applications.

Product names and markings noted herein may be trademarks of their respective owners.