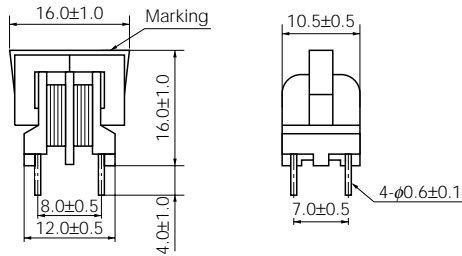


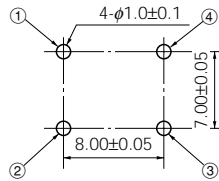
## Series M

### ● Type 11M

Dimensions in mm (not to scale)

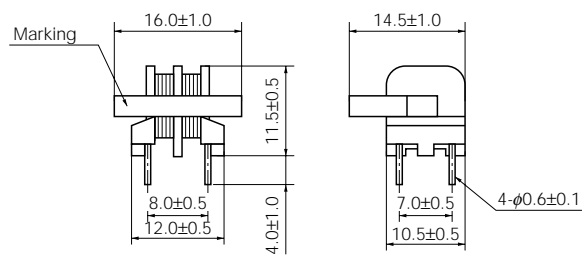


Recommended PWB piercing plan

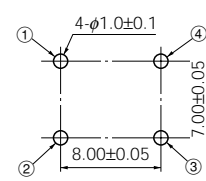


### ● Type 14M

Dimensions in mm (not to scale)



Recommended PWB piercing plan



### ● Standard Parts (Vertical type)

| Part No.   | Marking | Inductance (mH) min. (Tol ±20 %) | *R <sub>DC</sub> (Ω) [at 20 °C] max. | Current (A rms) max. |
|------------|---------|----------------------------------|--------------------------------------|----------------------|
| ELF11M010E | 010E    | 30.0                             | 9.70                                 | 0.1                  |
| ELF11M020E | 020E    | 12.0                             | 4.30                                 | 0.2                  |
| ELF11M030E | 030E    | 6.0                              | 2.30                                 | 0.3                  |
| ELF11M040E | 040E    | 3.5                              | 1.35                                 | 0.4                  |
| ELF11M050E | 050E    | 2.5                              | 0.93                                 | 0.5                  |
| ELF11M060E | 060E    | 1.5                              | 0.58                                 | 0.6                  |
| ELF11M070E | 070E    | 1.0                              | 0.36                                 | 0.7                  |
| ELF11M080E | 080E    | 0.8                              | 0.33                                 | 0.8                  |
| ELF11M090E | 090E    | 0.7                              | 0.28                                 | 0.9                  |
| ELF11M100E | 100E    | 0.5                              | 0.25                                 | 1.0                  |

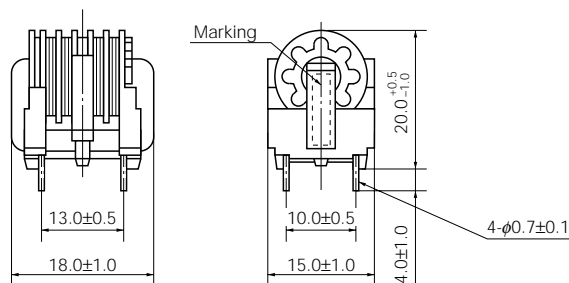
### ● Standard Parts (Horizontal type)

| Part No.   | Marking | Inductance (mH) min. (Tol ±20 %) | *R <sub>DC</sub> (Ω) [at 20 °C] max. | Current (A rms) max. |
|------------|---------|----------------------------------|--------------------------------------|----------------------|
| ELF14M010E | 010E    | 30.0                             | 9.70                                 | 0.1                  |
| ELF14M020E | 020E    | 12.0                             | 4.30                                 | 0.2                  |
| ELF14M030E | 030E    | 6.0                              | 2.30                                 | 0.3                  |
| ELF14M040E | 040E    | 3.5                              | 1.35                                 | 0.4                  |
| ELF14M050E | 050E    | 2.5                              | 0.93                                 | 0.5                  |
| ELF14M060E | 060E    | 1.5                              | 0.58                                 | 0.6                  |
| ELF14M070E | 070E    | 1.0                              | 0.36                                 | 0.7                  |
| ELF14M080E | 080E    | 0.8                              | 0.33                                 | 0.8                  |
| ELF14M090E | 090E    | 0.7                              | 0.28                                 | 0.9                  |
| ELF14M100E | 100E    | 0.5                              | 0.25                                 | 1.0                  |

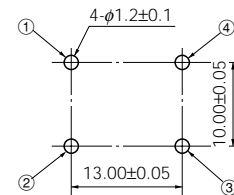
\* DC Resistance

### ● Type 16M

Dimensions in mm (not to scale)



Recommended PWB piercing plan



### ● Standard Parts

| Part No.   | Marking | Inductance (mH) min. (Tol ±20 %) | *R <sub>DC</sub> (Ω) [at 20 °C] max. | Current (A rms) max. | Part No.   | Marking | Inductance (mH) min. (Tol ±20 %) | *R <sub>DC</sub> (Ω) [at 20 °C] max. | Current (A rms) max. |
|------------|---------|----------------------------------|--------------------------------------|----------------------|------------|---------|----------------------------------|--------------------------------------|----------------------|
| ELF16M020A | 020A    | 28.0                             | 3.650                                | 0.2                  | ELF16M080A | 080A    | 3.5                              | 0.400                                | 0.8                  |
| ELF16M030A | 030A    | 20.0                             | 2.700                                | 0.3                  | ELF16M100A | 100A    | 2.0                              | 0.270                                | 1.0                  |
| ELF16M040A | 040A    | 15.0                             | 1.800                                | 0.4                  | ELF16M130A | 130A    | 1.0                              | 0.160                                | 1.3                  |
| ELF16M050A | 050A    | 8.0                              | 0.980                                | 0.5                  | ELF16M150A | 150A    | 0.8                              | 0.110                                | 1.5                  |
| ELF16M060A | 060A    | 7.0                              | 0.800                                | 0.6                  | ELF16M170A | 170A    | 0.6                              | 0.078                                | 1.7                  |
| ELF16M070A | 070A    | 5.0                              | 0.550                                | 0.7                  | ELF16M200A | 200A    | 0.5                              | 0.070                                | 2.0                  |

\* DC Resistance

Design and specifications are each subject to change without notice. Ask factory for the current technical specifications before purchase and/or use. Should a safety concern arise regarding this product, please be sure to contact us immediately.