

## 3-terminal Filters(SMD Array) For Cellular Phone

Conformity to RoHS Directive

### MEA Series MEA1210LC Type

#### FEATURES

- 2-line LC filter are built in one chip for high-density circuit design.
- 0.5mm low profile.
- For improvement of the mobile phone's frame(bit) error rate.
- This product is suitable for the LCD signal lines in mobile phone.

#### APPLICATIONS

For LCD and camera signal lines in mobile phone.

#### TEMPERATURE RANGES

Operating	-40 to +85°C
-----------	--------------

#### PRODUCT IDENTIFICATION

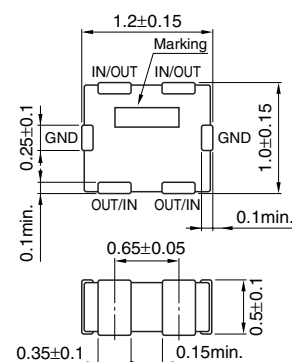
MEA	1210	L	C220	T
(1)	(2)	(3)	(4)	(5)

- |                   |                             |
|-------------------|-----------------------------|
| (1)Series name    | (4)Capacitance (pF)         |
| (2)Dimensions L×W | C220: 22pF                  |
| (3)L type circuit | (5)Packaging style T:Taping |

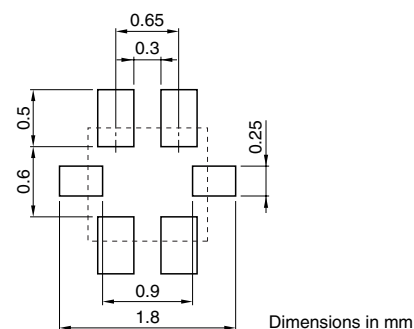
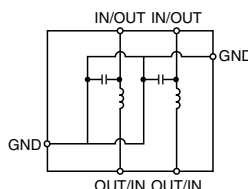
#### PACKAGING STYLE AND QUANTITIES

Packaging style	Quantity
Taping	4000 pieces/reel

#### SHAPES AND DIMENSIONS/CIRCUIT DIAGRAM/RECOMMENDED PC BOARD PATTERN (REFLOW)



Weight: 3.5mg  
Dimensions in mm



Dimensions in mm

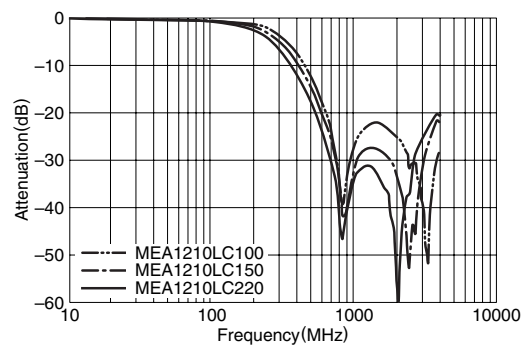
#### ELECTRICAL CHARACTERISTICS

Part No.	Rated voltage (V)max.	Rated current (mA)max.	Capacitance (pF)	Cutoff frequency (MHz)
MEA1210LC100	6.3	100	10	200
MEA1210LC150	6.3	100	15	200
MEA1210LC220	6.3	100	22	200

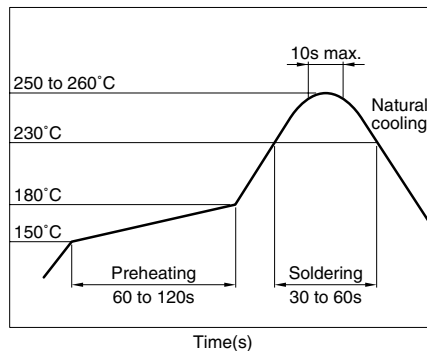
- Conformity to RoHS Directive: This means that, in conformity with EU Directive 2002/95/EC, lead, cadmium, mercury, hexavalent chromium, and specific bromine-based flame retardants, PBB and PBDE, have not been used, except for exempted applications.
- Please contact our Sales office when your application are considered the following:  
The device's failure or malfunction may directly endanger human life (e.g. application for automobile/aircraft/medical/nuclear power devices, etc.)

• All specifications are subject to change without notice.

### TYPICAL ELECTRICAL CHARACTERISTICS ATTENUATION vs. FREQUENCY CHARACTERISTICS



### RECOMMENDED SOLDERING CONDITION REFLOW SOLDERING



• All specifications are subject to change without notice.