





# XDSL SPLITTER FILTER MODULE



-  POTS Central Office Splitter for standard ADSL applications
-  LPF to ISDN 4B3T applications
-  LPF matched to DT complex impedance for POTS applications
-  ADSL2+ compatible

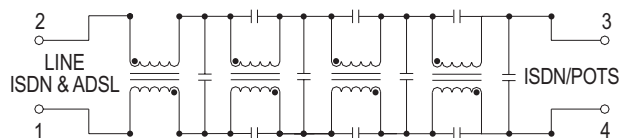
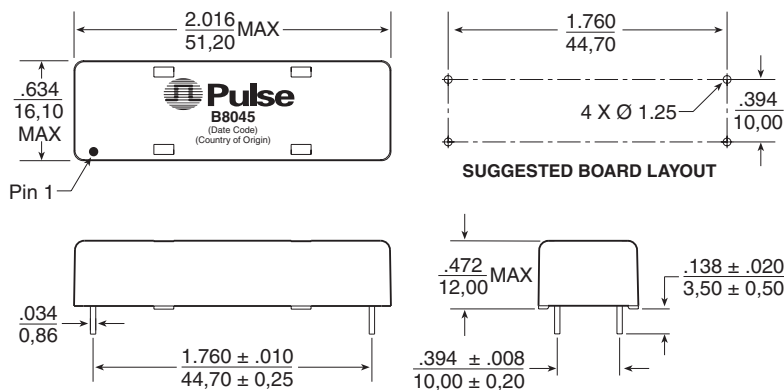
## Electrical Specifications @ 25°C

PARAMETER	FREQUENCY	
ISDN Impedance	1kHz to 80kHz	150Ω MAX
ISDN Insertion Loss	1kHz to 60kHz	-1.2dB MAX
	60kHz to 80kHz	-2.0dB MAX
ISDN Return Loss	1kHz to 80kHz	-14dB MIN
POTS Impedance		220Ω + 820Ω / 115nF
POTS Insertion Loss	300Hz to 600Hz	-1.0dB MAX
	600Hz to 1.6kHz	-0.5dB MAX
	1.6kHz to 3.4kHz	-1.0dB MAX
POTS Return Loss	300Hz to 3.4kHz	-12dB MIN
ADSL Insertion Loss	138kHz to 2.2MHz	-55dB MIN
DC Current		80mA MAX
Total DC Resistance		12.5Ω MAX
<i>For Information - behavior at VDSL frequencies:</i>	2.2MHz to 12MHz	-55dB MIN
ADSL Insertion Loss	12MHz to 30MHz	-45dB MIN

## Mechanical

## Schematic

### B8045



Weight .....11 grams  
 Tray ..... .35/tray

Dimensions: Inches  
 mm

Unless otherwise specified, all tolerances are ± .010  
 0,25

## For More Information:

### Pulse Worldwide Headquarters

12220 World Trade Drive  
 San Diego, CA 92128  
 U.S.A.  
[www.pulseeng.com](http://www.pulseeng.com)  
 TEL: 858 674 8100  
 FAX: 858 674 8262

### Pulse Northern Europe

3 Huxley Road  
 Surrey Research Park  
 Guildford, Surrey GU2 5RE  
 United Kingdom  
 TEL: 44 1483 401700  
 FAX: 44 1483 401701

### Pulse Southern Europe

Zone Industrielle  
 F-39270  
 Orgelet  
 France  
 TEL: 33 3 84 35 04 04  
 FAX: 33 3 84 25 46 41

### Pulse China Headquarters

No. 1  
 Industrial District  
 Changnan, Dongguan  
 China  
 TEL: 86 769 5538070  
 FAX: 86 769 5538870

### Pulse North China

Room 1002  
 No. 819  
 Nanjing West Rd  
 Shanghai  
 China  
 TEL: 86 21 32181071  
 FAX: 86 21 32181396

### Pulse South Asia

150 Kampong Ampat  
 #07-01/02  
 KA Centre  
 Singapore 368324  
 TEL: 65 6287 8998  
 FAX: 65 6280 0080

### Pulse North Asia

3F-4, No. 81, Sec. 1  
 Hsin Tai Wu Road  
 Hsi-Chih  
 Taipei Hsien  
 Taiwan  
 TEL: 886 2 26980228  
 FAX: 886 2 26980948

Performance warranty of products offered on this data sheet is limited to the parameters specified. Data is subject to change without notice. Other brand and product names mentioned herein may be trademarks or registered trademarks of their respective owners.

© Copyright, 2005. Pulse Engineering, Inc. All rights reserved.

[www.pulseeng.com](http://www.pulseeng.com)

B816.B (9/05)