

Ferrite Cores

RHH, R4H, RID, R Series

For Audio-Visual, TV, & Radio Equipment
For Balun Transformer/Choke Coil

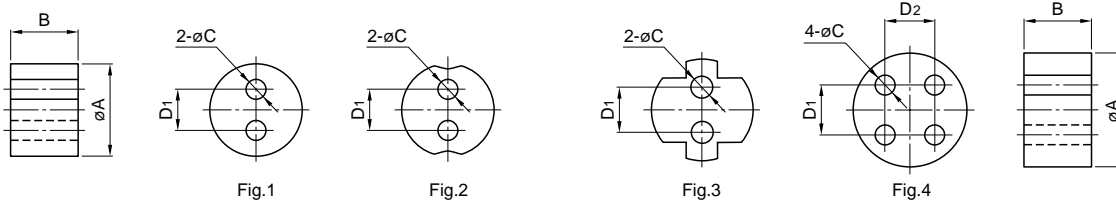
MATERIAL CHARACTERISTICS

Material	Practical frequency (MHz)	Initial permeability μ_i	Relative loss factor $\tan\delta/\mu_i \times 10^{-6}$	Temperature factor of initial permeability $\alpha_{\mu ir} \times 10^{-6}/^\circ\text{C}$ [+20 to +60°C]	Curie temperature T_c (°C)	Saturation magnetic flux density B_s (mT)	Remanant flux density B_r (mT)	Coercive force H_c (A/m)	Electrical resistivity ρ_v ($\Omega\cdot\text{m}$)	Density d_b (kg/m^3)
L6	0.01 to 0.5	1500±25%	<10[0.01MHz] <60[0.5MHz]	1 to 3	>100	280 [1.6kA/m]	105	16	10 ⁵	5×10 ³
L5	0.1 to 1.5	750±25%	<15[0.1MHz] <280[1.5MHz]	1 to 3	>120	310 [1.6kA/m]	105	40	10 ⁵	5×10 ³
L4	0.1 to 1.5	400±25%	<30[0.1MHz] <150[1.5MHz]	3 to 9	>150	330 [1.6kA/m]	110	72	10 ⁵	5×10 ³
Q1C	0.1 to 2	250±25%	<35[0.1MHz] <110[2MHz]	9 to 15	>125	290 [1.6kA/m]	140	119	10 ⁵	5×10 ³
Q5B	0.4 to 20	100±25%	<25[0.4MHz] <180[20MHz]	5 to 12	>300	340 [4kA/m]	190	286	10 ²	4.7×10 ³
M9	0.5 to 30	50±25%	<90[0.5MHz] <280[30MHz]	25 to 65	>300	350 [4kA/m]	215	597	10 ⁵	5×10 ³
M11	3 to 80	25±25%	<220[3MHz] <470[80MHz]	30 to 70	>300	290 [4kA/m]	190	1195	10 ⁵	5×10 ³
M5E	10 to 120	17±25%	<450[10MHz] <1000[120MHz]	40 to 120	>300	300 [8kA/m]	185	1670	10 ⁵	5.1×10 ³

• 1(mT): 10(gauss), 1(A/m): 0.012566(Oersrted)

RHH AND R4H SERIES

CORE SHAPES AND DIMENSIONS



Part No.	Dimensions in mm					
	øA	B	øC	D1	D2	Fig.
Q5BRHH6X5H1.2 L6RHH6X5H1.2	6±0.2	5±0.3	1.2±0.2,-0	2.5		1
Q5BRHH7X5.5H1.5M L6RHH7X5.5H1.5M	7±0.2	5.5±0.3	1.5±0.1	3		2
Q5BRHH7.5X4H1.3M	7.5±0.3	4±0.3	1.3±0.1	2.3		3
Q5BR4H8X5H1.2 L6R4H8X5H1.2	8±0.3	5±0.3	1.2±0.3,-0	3	3	4



△ Specifications which provide more details for the proper and safe use of the described product are available upon request.
All specifications are subject to change without notice.



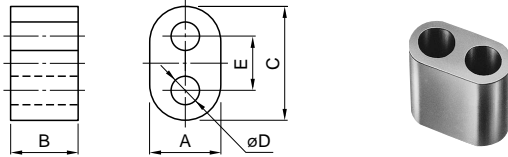
Ferrite Cores

RHH, R4H, RID, R Series

For Audio-Visual, TV, & Radio Equipment
For Balun Transformer/Choke Coil

RID SERIES

CORE SHAPES AND DIMENSIONS

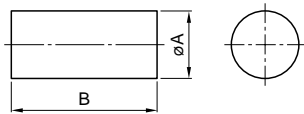


Dimensions in mm

Part No.	A	B	C	øD	E
Q5BRID3X2X5H1.2	3±0.2	2±0.2	5.2±0.3	1.2±0.1	2.6
L6RID3X2X5H1.2					
Q5BRID3X3X5H1.2	3±0.2	3±0.2	5.2±0.3	1.2±0.1	2.6
L6RID3X3X5H1.2					
Q5BRID3X5X5H1.2	3±0.2	5±0.3	5.2±0.3	1.2±0.1	2.6
L6RID3X4X6H1.5	3±0.2	4±0.3	6±0.3	1.5±0.1	3
L6RID3X10X6.5H1	3±0.2	10±0.4	6.5±0.3	1±0.1	3.5
Q5BRID6.5X4X12H3.8	6.5±0.3	4±0.3	12±0.5	3.8±0.25	5.5
Q5BRID7.5X5X13H3.8(R)	7.5±0.3	5±0.3	13.3±0.5	3.8±0.25	5.8
Q5BRID7.5X7X13H3.8(R)	7.5±0.3	7±0.3	13.3±0.5	3.8±0.25	5.8
Q5BRID8X7X15H5	8±0.3	7±0.3	15±0.5	5±0.25	7
Q5BRID8X14X15H5	8±0.3	14±0.5	15±0.5	5±0.25	7

R SERIES

CORE SHAPES AND DIMENSIONS



Dimensions in mm

Part No.	øA	B
M11R3X7.5	3+0.1,-0.2	7.5±0.3
M5ER3X8	3+0.1,-0.2	8±0.3
L4R3X10	3+0.1,-0.2	10±0.3
M9R4X10	4+0.15,-0.2	10±0.5
L5R6X15	6+0.1,-0.2	15±0.5
Q1CR6X30	6+0.1,-0.3	30±1
L4R10X20	10+0.1,-0.25	20±0.7

