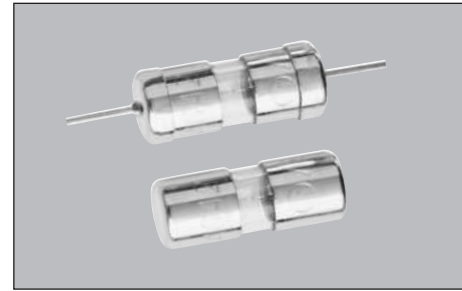


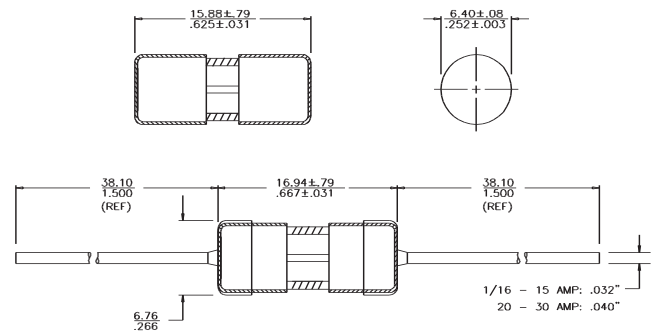
Description

- Fast acting
- 1/4" x 5/8" (6.3mm x 15.9mm) physical size
- Glass tube, nickel-plated brass endcap construction
- Optional leaded version available
- UL Listed product meets standard 248-14

| ELECTRICAL CHARACTERISTICS | | |
|----------------------------|-----------------|---------------------|
| Rated Current | % of Amp Rating | Opening Time |
| 1/16 - 10A | 100% | 4 hours minimum |
| | 135% | 60 minutes maximum |
| | 200% | 120 seconds maximum |



Dimensions ^{mm}/_(inches)



Agency Information

- UL Listed, Guide JDYX, File E19180 (AGA 0-1 1/2A)
- UL Listed, Guide JDYX, File E19180 (AGA-V 0-5A)
- UL Recognized, Guide JDYX2, File E19180 (AGA 2A-12A)
- UL Recognized, Guide JDYX2, File E19180 (AGA-V 6A-12A)

Ordering

- Specify packaging, product, and option code

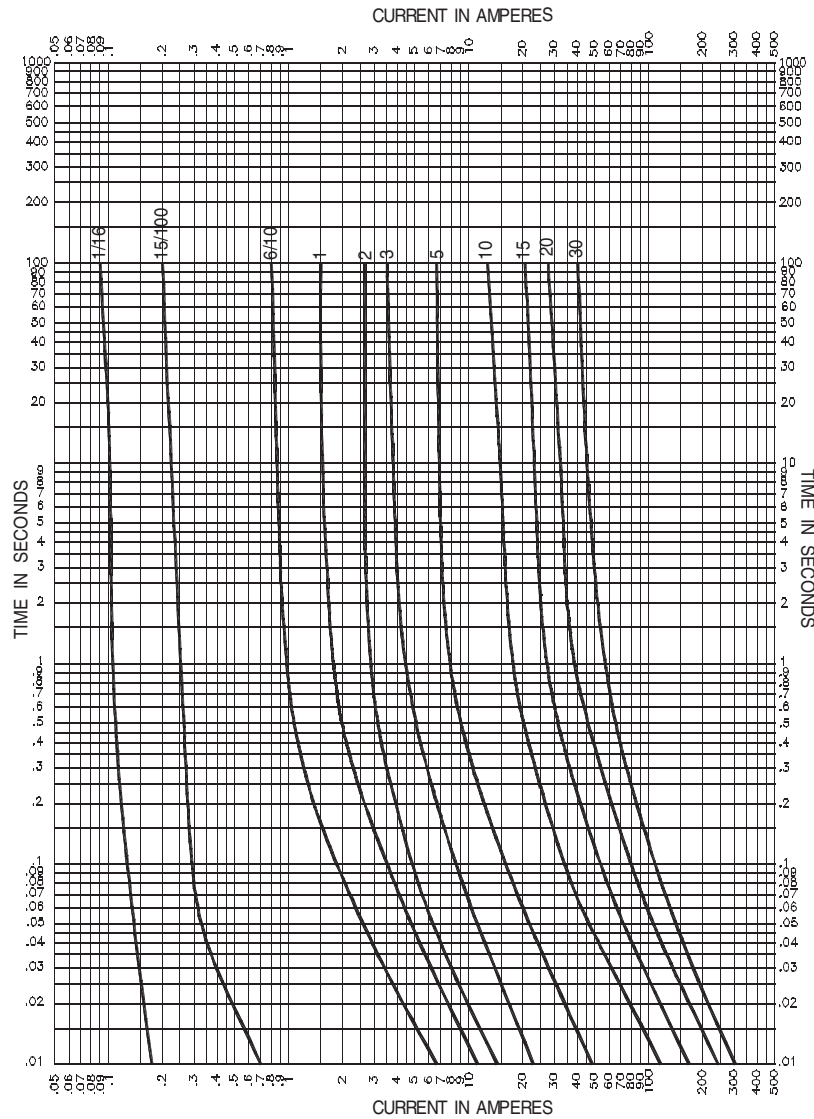
| SPECIFICATIONS | | | | | | | |
|----------------|----------------------|-------------------------|--------|-------------------------------------|--------------|----|---------------------------|
| Product Code | Voltage Rating AC | AC Interrupting Rating* | | Typical DC Cold Resistance (ohms)** | Typical Melt | | Typical Voltage Drop (V)‡ |
| | | 125V | 32V | | AC | DC | |
| AGA-1/16 | 125 V | 10,000A | - | 13.250 | TBD | - | TBD |
| AGA-1/10 | 125 V | 10,000A | - | 6.250 | TBD | - | TBD |
| AGA-1/8 | 125 V | 10,000A | - | 4.000 | TBD | - | TBD |
| AGA-1/4 | 125 V | 10,000A | - | 1.740 | TBD | - | TBD |
| AGA-3/8 | 125 V | 10,000A | - | 0.925 | TBD | - | TBD |
| AGA-1/2 | 125 V | 10,000A | - | 0.300 | TBD | - | TBD |
| AGA-6/10 | 125 V | 10,000A | - | 0.250 | TBD | - | TBD |
| AGA-3/4 | 125 V | 10,000A | - | 0.179 | TBD | - | TBD |
| AGA-1 | 125 V | 10,000A | - | 0.118 | TBD | - | TBD |
| AGA-1-1/2 | 125 V | 10,000A | - | 0.077 | TBD | - | TBD |
| AGA-2 | 125 V | 200A | - | 0.054 | TBD | - | TBD |
| AGA-2-1/2 | 125 V | 200A | - | 0.040 | TBD | - | TBD |
| AGA-3 | 125 V | 200A | - | 0.031 | TBD | - | TBD |
| AGA-5 | 125 V | 200A | - | 0.017 | TBD | - | TBD |
| AGA-6 | 32 V | - | 1,000A | 0.014 | TBD | - | TBD |
| AGA-7 | 32 V | - | 1,000A | 0.012 | TBD | - | TBD |
| AGA-7-1/2 | 32 V | - | 1,000A | 0.010 | TBD | - | TBD |
| AGA-10 | 32 V | - | 1,000A | 0.007 | TBD | - | TBD |
| AGA-15 | 32 V | - | 1,000A | 0.005 | TBD | - | TBD |
| AGA-20 | 32 V | - | 1,000A | 0.003 | TBD | - | TBD |
| AGA-25 | 32 V | - | 1,000A | 0.003 | TBD | - | TBD |
| AGA-30 | 32 V | - | 1,000A | 0.002 | TBD | - | TBD |

* Interrupting Rating: Interrupting ratings for 2A-5A has been measured at 70%-80% power factor. ratings for 5.1A-12A were measured at 80% power factor.

** DC Cold Resistance (Measured at <10% of rated current)

‡ Typical Voltage Drop (Measured at 25°C±3°C ambient temperature at rated current)

TIME CURRENT CURVE



PACKAGING CODE

| Packaging Code | Description |
|----------------|--|
| BK | 100 pieces of fuses packed into a cardboard carton |
| BK8 | 8,000 pieces of fuses packed into a cardboard carton |

OPTION CODE

| Option Code | Description |
|-------------|--|
| B | Board Washable - Hermetically sealed to withstand aqueous cleaning |
| V | Axial leads - copper tinned wire with nickel plated brass overcaps |

North America

Cooper Electronic Technologies
1225 Broken Sound Parkway NW
Suite F
Boca Raton, FL 33487-3533
Tel: 1-561-998-4100
Tel: 1-561-241-6640
Toll Free: 1-888-414-2645

Cooper Bussmann
P.O. Box 14460
St. Louis, MO 63178-4460
Tel: 1-636-394-2877
Fax: 1-800-544-2570

Europe

Cooper Electronic Technologies
Cooper (UK) Limited
Burton-on-the-Wolds
Leicestershire • LE12 5TH UK
Tel: +44 (0) 1509 882 737
Fax: +44 (0) 1509 882 786

Cooper Electronic Technologies
Avda. Santa Eulalia, 290
08223
Terrassa, (Barcelona), Spain
Tel: +34 937 362 812
+34 937 362 813
Fax: +34 937 362 719

Asia Pacific

Cooper Electronic Technologies
1 Jalan Kilang Timor
#06-01 Pacific Tech Centre
Singapore 159303
Tel: +65 278 6151
Fax: +65 270 4160