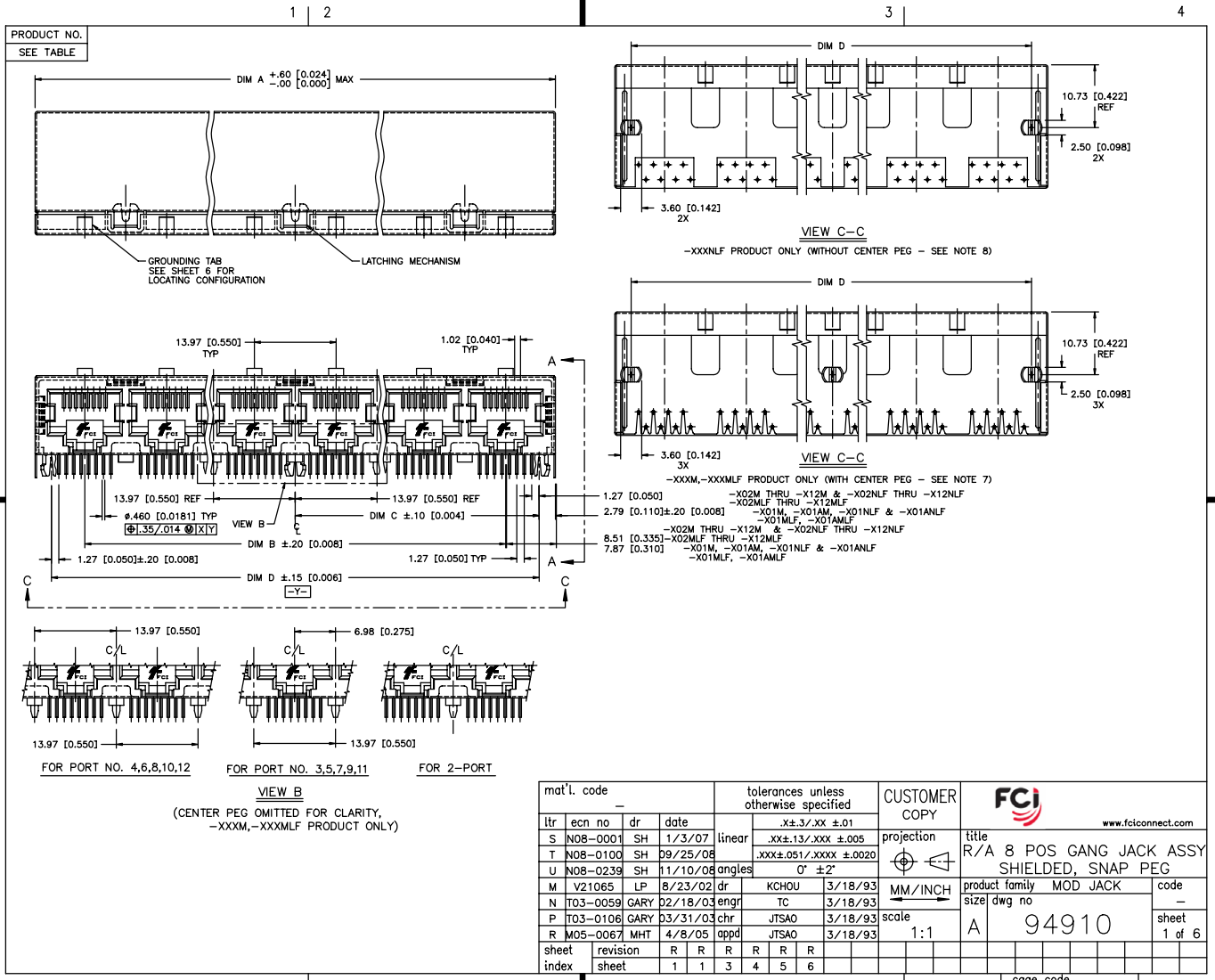


Tous droits strictement réservés. Reproduction ou communication à des tiers interdite sous quelque forme que ce soit sans autorisation écrite du propriétaire. Property of FCI. Droits de reproduction FCI.



All rights strictly reserved. Reproduction or issue to third parties in any form whatever is not permitted without written authority from the proprietor. Property of FCI. Copyright FCI.

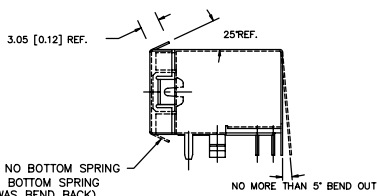
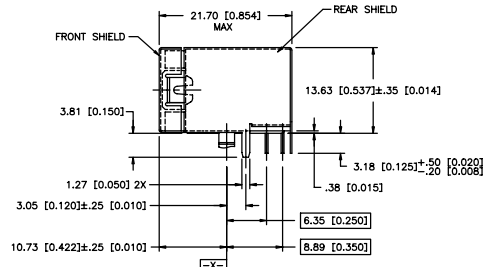
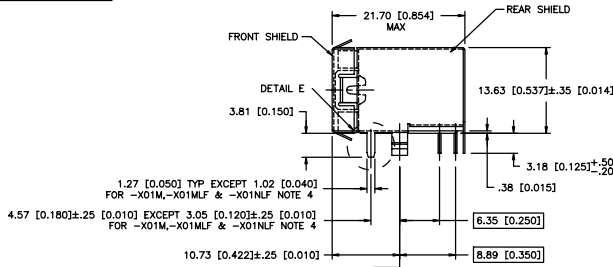


Tous droits strictement réservés. Reproduction ou communication à des tiers interdite sans quelque forme que ce soit sans autorisation écrite du propriétaire. Propriété de c FCI. Droits de reproduction FCI.

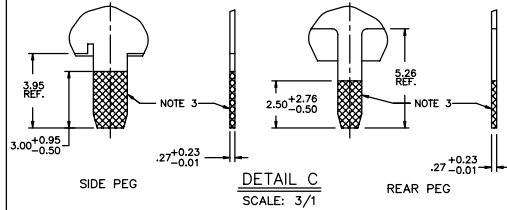


All rights strictly reserved. Reproduction or issue to third parties in any form whatever is not permitted without written authority from the proprietor. Property of FCI. Copyright FCI.

PRODUCT NO
SEE TABLE



P/N-X03N-ALF ONLY



VIEW A-A

NOTE 5

NOTES:

1. RECOMMENDED P.C.B. THICKNESS 1.60 [0.063].
2. CONTACTS: PHOS BRONZE ALLOY UNS-C51000, ϕ 0.460 [0.0181] ROUND WIRE, PLATING SEE TABLE.
- ③ SHIELDING MAT'L: .25 [0.010] THICK BRASS ALLOY. SHIELDING PLATING: FOR 94910-XXXM: 2.54 μ m/100 μ m MIN BRIGHT TIN-LEAD PLATED OVER 0.76 μ m/30 μ m MIN NICKEL UNDERPLATING PER BUS-15-002/M. LEAD FREE OPTION: FOR 94910-XXXNLF: 0.76 μ m/30 μ m MIN NICKEL PLATING, WITH SELECTIVE TIN ON SOLDER TAILS, SEE DETAIL E. SHIELDING PLATING: FOR 94910-XXXMLF: 2.54 μ m/100 μ m MIN BRIGHT PURE TIN PLATED OVER 0.76 μ m/30 μ m MIN NICKEL UNDERPLATING PER BUS-15-002/M.
- ④ SPECIALLY FOR ONE-PORT P/N 94910-X01M, -X01MLF & 94910-X01NLF ONLY. SOLDER TAIL OF SHIELD IS 1.02 [0.040] WIDE, DISTANCE FROM PCB PEG TO THE SOLDER TAIL IS 3.05 [0.120].
- ⑤ SPECIALLY FOR ONE-PORT P/N 94910-X01AM, -X01AMLF & 94910-X01ANLF ONLY. SOLDER TAIL OF SHIELD IS 1.27 [0.050] WIDE, DISTANCE FROM PCB PEG TO THE SOLDER TAIL IS 3.05 [0.120].
6. ALL DIMENSIONS IN MILLIMETERS/INCHES.
- ⑦ CENTER PEG FOR 8-PORTS AND ABOVE, (-XXXM, -XXXMLF PRODUCT ONLY).
- ⑧ NO CENTER PEG AVAILABLE ON -XXXNLF PRODUCT.
- ⑨ "LF" SUFFIX AT THE END OF PART NUMBER IS LEAD FREE.
10. THE HOUSING WILL WITHSTAND EXPOSURE TO 260°C PEAK TEMPERATURE FOR 15 SECONDS IN A WAVE SOLDER APPLICATION WITH A 1.5mm MINIMUM THICK CIRCUIT BOARD. SEE APPLICATION NOTES/PROCEDURES IF THEY ARE AVAILABLE.
11. THIS PRODUCT MEETS EUROPEAN UNION DIRECTIVES AND OTHER COUNTRY REGULATION AS DESCRIBED IN GS-22-008
- ⑫ PLATING OPTIONS: MAY BE EITHER GOLD OR GXT PLATED AT MANUFACTURER'S OPTION.

mat'l. code		tolerances unless otherwise specified		CUSTOMER COPY		FCI	
ltr	ecn no	dr	date	linear	projection	www.fciconnect.com	
U				.X±.3/.XX ±.01	MM/INCH	title	
				.XX±.13/.XXX ±.005	1:1	R/A 8 POS GANG JACK ASSY SHIELDED, SNAP PEG	
				.XXX±.051/.XXX ±.0020		product family MOD JACK	
				angles 0° ±2°		code	
				dr KCHOU 3/18/93		size	
				enrg TC 3/18/93		94910	
				chr JTSAO 3/18/93		sheet	
				appd JTSAO 3/18/93		2 of	
sheet	revision					cage code	
index	sheet					26	

ACAD

PDM: Rev:U

STATUS: Released 26 Printed: Aug 01, 2010

Tous droits strictement réservés. Reproduction ou communication à des tiers interdite sous quelque forme que ce soit sans autorisation écrite du propriétaire. Property of FCI. No right of reproduction FCI.



All rights strictly reserved. Reproduction or issue to third parties in any form without the prior written authority from the proprietor. Property of FCI. Copyright FCI.

PRODUCT No.	No. OF PORTS	DIM A +.60 [0.024] -0	DIM B	DIM C±.10 [0.004]	DIM D±.15 [0.006]	GROUND LEG NO. ON THE BACK (VIEW B)	NOTE
94910-X01M	1	15.74 [0.620]	-----	5.72 [0.225]	11.43 [0.450]	NONE	NOTE 4
94910-X01AM	1	15.74 [0.620]	-----	5.72 [0.225]	11.43 [0.450]	NONE	NOTE 5
94910-X04M	4	58.92 [2.320]	41.91 [1.650]	26.67 [1.050]	53.34 [2.100]	3	
94910-X08M	8	114.80 [4.520]	97.79 [3.850]	54.61 [2.150]	109.22 [4.300]	3	
94910-X01MLF	1	15.74 [0.620]	-----	5.72 [0.225]	11.43 [0.450]	NONE	NOTE 4
94910-X01AMLF	1	15.74 [0.620]	-----	5.72 [0.225]	11.43 [0.450]	NONE	NOTE 5
94910-X04MLF	4	58.92 [2.320]	41.91 [1.650]	26.67 [1.050]	53.34 [2.100]	3	
94910-X08MLF	8	114.80 [4.520]	97.79 [3.850]	54.61 [2.150]	109.22 [4.300]	3	
94910-X11MLF	1	15.74 [0.620]	-----	5.72 [0.225]	11.43 [0.450]	NONE	NOTE 4
94910-X11AMLF	1	15.74 [0.620]	-----	5.72 [0.225]	11.43 [0.450]	NONE	NOTE 5
94910-X14MLF	4	58.92 [2.320]	41.91 [1.650]	26.67 [1.050]	53.34 [2.100]	3	
94910-X18MLF	8	114.80 [4.520]	97.79 [3.850]	54.61 [2.150]	109.22 [4.300]	3	

0: MEETS WAVE SOLDER PROCESS PRODUCT NO.
1: MEETS PIP PROCESS PRODUCT NO.

PLATING CODE X	PLATING (12)
0	.76uM/30u" G.X.T.
1	.38uM/15u" GOLD
3	.76uM/30u" GOLD
5	1.27uM/50u" GOLD

mat'l. code		tolerances unless otherwise specified		CUSTOMER COPY		FCI www.fciconnect.com		
ltr	ecr no	dr	date	linear	.X±.3/XX ±.01	projection	title	
U				angles	.XX±.13/XXX ±.005		R/A 8 POS GANG JACK ASSY SHIELDED, SNAP PEG	
					.XXX±.051/XXXX ±.0020		product family MOD JACK	code
				dr	0° ±2°	MM/INCH	size	
				enrg	KCHOU 5/4/94		dwg no	
				chr	TC 5/4/94		94910	sheet
				appd	JTSAO 5/4/94		3 of	
sheet index	revision sheet				JTSAO 5/4/94	scale 1:1		

Tous droits strictement réservés. Reproduction ou communication à des tiers interdite sous quelque forme que ce soit sans autorisation écrite du propriétaire. Property of FCI. No right of reproduction FCI.



All rights strictly reserved. Reproduction or issue to third parties in any form whatsoever is not permitted without written authority from the proprietor. Property of FCI. Copyright FCI.

1 | 2

3

4

PRODUCT No.	PORTS	DIM A -0	DIM B $\pm .20$ [0.008]	DIM C $\pm .10$ [0.004]	DIM D $\pm .15$ [0.006]	THE BACK (VIEW B)	
94910-X01NLF	1	15.74 [0.620]	-----	5.72 [0.225]	11.43 [0.450]	NONE	NOTE 4
94910-X01ANLF	1	15.74 [0.620]	-----	5.72 [0.225]	11.43 [0.450]	NONE	NOTE 5
94910-X04NLF	4	58.92 [2.320]	41.91 [1.650]	26.67 [1.050]	53.34 [2.100]	3	
94910-X08NLF	8	114.80 [4.520]	97.79 [3.850]	54.61 [2.150]	109.22 [4.300]	3	
94910-X11NLF	1	15.74 [0.620]	-----	5.72 [0.225]	11.43 [0.450]	NONE	NOTE 4
94910-X11ANLF	1	15.74 [0.620]	-----	5.72 [0.225]	11.43 [0.450]	NONE	NOTE 5
94910-X14NLF	4	58.92 [2.320]	41.91 [1.650]	26.67 [1.050]	53.34 [2.100]	3	
94910-X18NLF	8	114.80 [4.520]	97.79 [3.850]	54.61 [2.150]	109.22 [4.300]	3	

0: MEETS WAVE SOLDER PROCESS PRODUCT NO.
1: MEETS PIP PROCESS PRODUCT NO.

PLATING CODE X	PLATING (2)
0	.76uM/30u" G.X.T.
1	.38uM/15u" GOLD
3	.76uM/30u" GOLD
5	1.27uM/50u" GOLD

mat'l. code		tolerances unless otherwise specified		CUSTOMER COPY		FCI	
ltr	ecr no	dr	date	linear	.X \pm .3/.XX \pm .01	projection	www.fciconnect.com
U				angles	.XX \pm .13/.XXX \pm .005		title R/A 8 POS GANG JACK ASSY SHIELDED, SNAP PEG
				dr	.XXX \pm .051/.XXXX \pm .0020		
				enrg	0" \pm 2"	MM/INCH	code
				chr	KCHOU 5/4/94	scale	size
				appd	TC 5/4/94	1:1	dwg no
sheet	revision				JTSAO 5/4/94		94910
index	sheet				JTSAO 5/4/94		4 of

1 | 2

3

4

ACAD

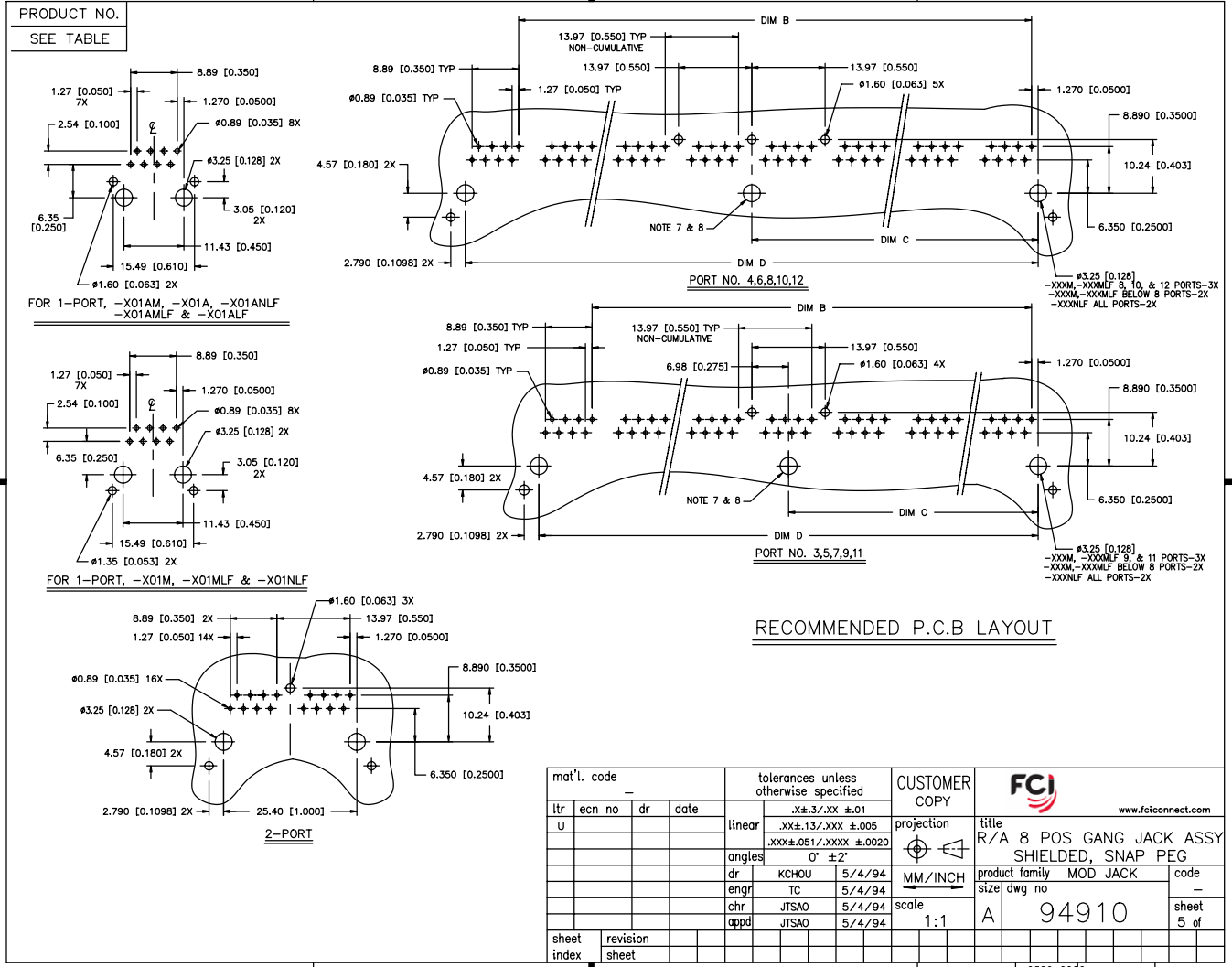
PDM: Rev:0

STATUS: Released 26 Printed: Aug 01, 2014

Tous droits strictement réservés. Reproduction ou communication de ces plans interdite sous quelque forme que ce soit sans autorisation écrite du propriétaire. Propriété de © FCI. Droits de reproduction FCI.



All rights strictly reserved. Reproduction or issue to third parties in any form whatever is not permitted without written authority from the proprietor. Property of FCI. Copyright FCI.



mat'l. code		tolerances unless otherwise specified		CUSTOMER COPY		FCI	
ltr	ecr no	dr	date	.X±.3/XX ±.01	projection	title	www.fciconnect.com
U				linear .XX±.13/XXX ±.005	MM/INCH	R/A 8 POS GANG JACK ASSY SHIELDED, SNAP PEG	
				angles .XXX±.051/XXXX ±.0020	product family	MOD JACK	code
				0° ±2°	size	94910	sheet
				dr KCHOU 5/4/94	scale	1:1	5 of
				enrg TC 5/4/94			
				chr JTSAO 5/4/94			
				appd JTSAO 5/4/94			
sheet index	revision sheet						

ACAD

PDM: Rev:U

STATUS: Released

cage code 22526

Printed: Aug 01 2001

1 | 2

3 |

4

LATCHING AND GROUNDING TAB LOCATING CONFIGURATION

INDICATES LATCHING TAB (SEE SHEET 1)
 INDICATES GROUNDING TAB ON THE FRONT OF PRODUCT (SEE SHEET 1)
 INDICATES GROUNDING LEG ON THE BACK OF PRODUCT (VIEW B)

PORT NUMBERS

12: 41.91 [1.650] (total width), 69.85 [2.750] (pitch), 41.91 [1.650] (total width). Pins 1-12. Latching tabs on pins 1, 2, 11, 12. Grounding tabs on pins 3, 4, 10, 11. Grounding legs on pins 5, 6, 7, 8, 9.

11: 34.93 [1.375] (total width), 62.87 [2.475] (pitch), 34.93 [1.375] (total width). Pins 1-11. Latching tabs on pins 1, 2, 10, 11. Grounding tabs on pins 3, 4, 9, 10. Grounding legs on pins 5, 6, 7, 8.

10: 13.97 [0.550] (total width), 27.94 [1.100] (pitch), 13.97 [0.550] (total width). Pins 1-10. Latching tabs on pins 1, 2, 9, 10. Grounding tabs on pins 3, 4, 8, 9. Grounding legs on pins 5, 6, 7.

9: 20.96 [0.825] (total width), 55.88 [2.200] (pitch), 20.96 [0.825] (total width). Pins 1-9. Latching tabs on pins 1, 2, 8, 9. Grounding tabs on pins 3, 4, 7, 8. Grounding legs on pins 5, 6.

8: 13.97 [0.550] (total width), 48.90 [1.925] (pitch), 13.97 [0.550] (total width). Pins 1-8. Latching tabs on pins 1, 2, 7, 8. Grounding tabs on pins 3, 4, 6, 7. Grounding legs on pins 5.

7: 41.91 [1.650] (total width), 34.93 [1.375] (pitch), 41.91 [1.650] (total width). Pins 1-7. Latching tabs on pins 1, 2, 6, 7. Grounding tabs on pins 3, 4, 5, 6. Grounding legs on pins 1, 2.

PORT NUMBERS

6: 27.94 [1.100] (total width), 27.94 [1.100] (pitch), 27.94 [1.100] (total width). Pins 1-6. Latching tabs on pins 1, 2, 5, 6. Grounding tabs on pins 3, 4. Grounding legs on pins 1, 2, 3, 4.

5: 20.96 [0.825] (total width), 20.96 [0.825] (pitch), 20.96 [0.825] (total width). Pins 1-5. Latching tabs on pins 1, 2, 4, 5. Grounding tabs on pins 3. Grounding legs on pins 1, 2, 3, 4.

4: 13.97 [0.550] (total width), 13.97 [0.550] (pitch), 13.97 [0.550] (total width). Pins 1-4. Latching tabs on pins 1, 2, 3, 4. Grounding tabs on pins 1, 2, 3. Grounding legs on pins 1, 2, 3.

3: 6.99 [0.275] (total width), 6.99 [0.275] (pitch), 6.99 [0.275] (total width). Pins 1-3. Latching tabs on pins 1, 2, 3. Grounding tabs on pins 1, 2. Grounding legs on pins 1, 2, 3.

2: 41.91 [1.650] (total width), 41.91 [1.650] (pitch), 41.91 [1.650] (total width). Pins 1-2. Latching tabs on pins 1, 2. Grounding tabs on pins 1, 2. Grounding legs on pins 1, 2.

1: 41.91 [1.650] (total width), 41.91 [1.650] (pitch), 41.91 [1.650] (total width). Pin 1. Latching tab on pin 1. Grounding tab on pin 1. Grounding leg on pin 1.

Tous droits strictement reserves. Reproduction ou communication a des tiers interdite sous quelque forme que ce soit sans autorisation écrite du propriétaire. Propriete de c FCI. Droits de reproduction FCI.

All rights strictly reserved. Reproduction or issue to third parties in any form whatever is not permitted without written authority from the proprietor. Property of FCI. Copyright FCI.

mat'l. code		tolerances unless otherwise specified		CUSTOMER COPY		www.fciconnect.com	
ltr	ecn no	dr	date	linear	.X±.3/.XX ±.01	projection	title R/A 8 POS GANG JACK ASSY SHIELDED, SNAP PEG
u				angles	.XX±.13/.XXX ±.005 .XXX±.051/.XXXX ±.0020 0° ±2°		
				dr	KCHOU 5/4/94	MM/INCH	product family MOD JACK
				engr	TC 5/4/94	scale	code
				chr	JTSAO 5/4/94	1:1	size
				appd	JTSAO 5/4/94		dwg no
sheet	revision						94910
index	sheet						6 of

1 | 2

ACAD

PDM: Rev:U

STATUS: Released 22626 Printed: Aug 01, 2010

B

A

OBSOLETE

OBSOLETE

Downloaded from Elcodis.com electronic components distributor