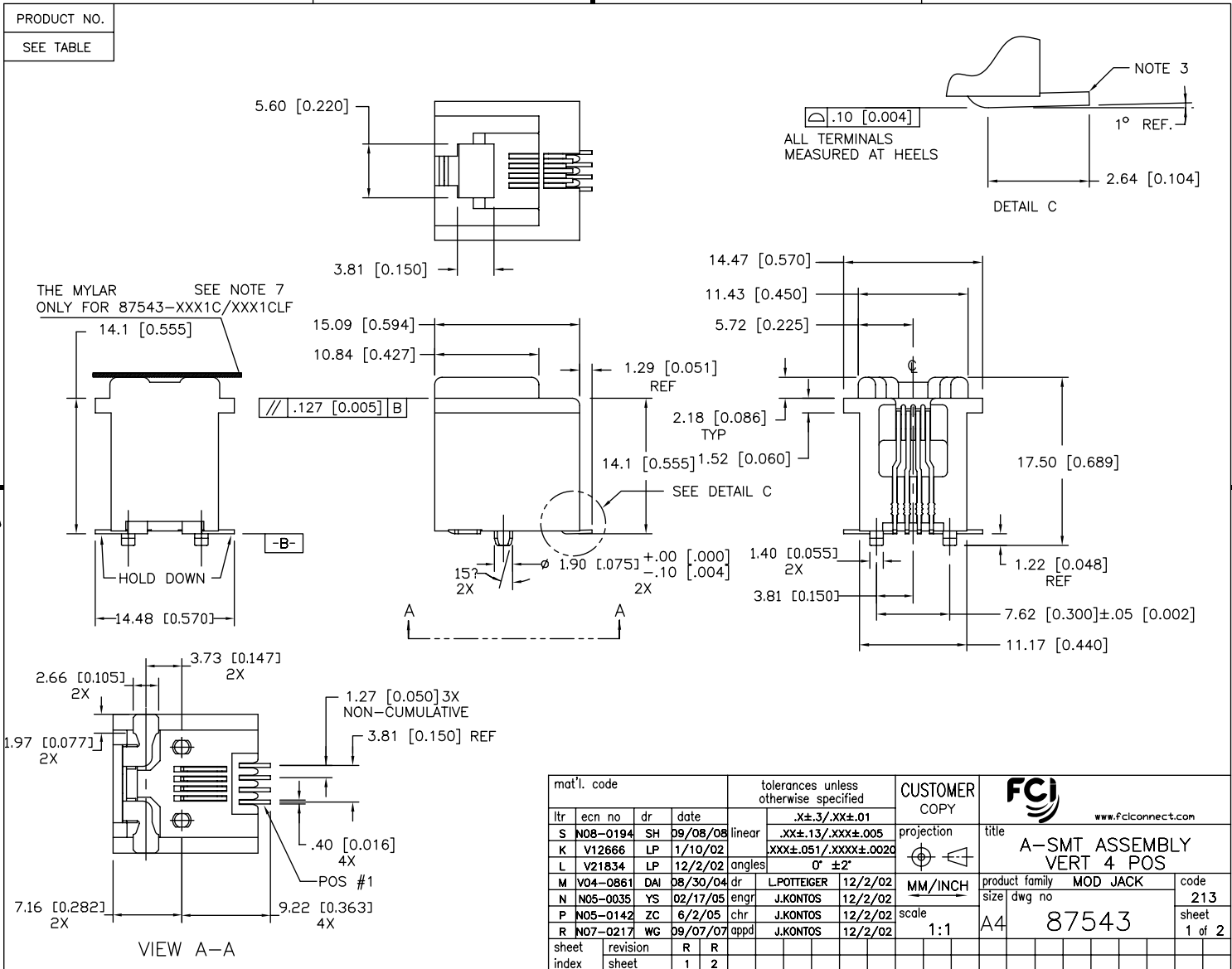


Tous droits strictement réservés. Reproduction ou communication à des tiers interdite sous quelque forme que ce soit sans autorisation écrite du propriétaire. Propriété de c FCI. Droits de reproduction FCI.

All rights strictly reserved. Reproduction or issue to third parties in any form whatever is not permitted without written authority from the proprietor. Property of FCI. Copyright FCI.



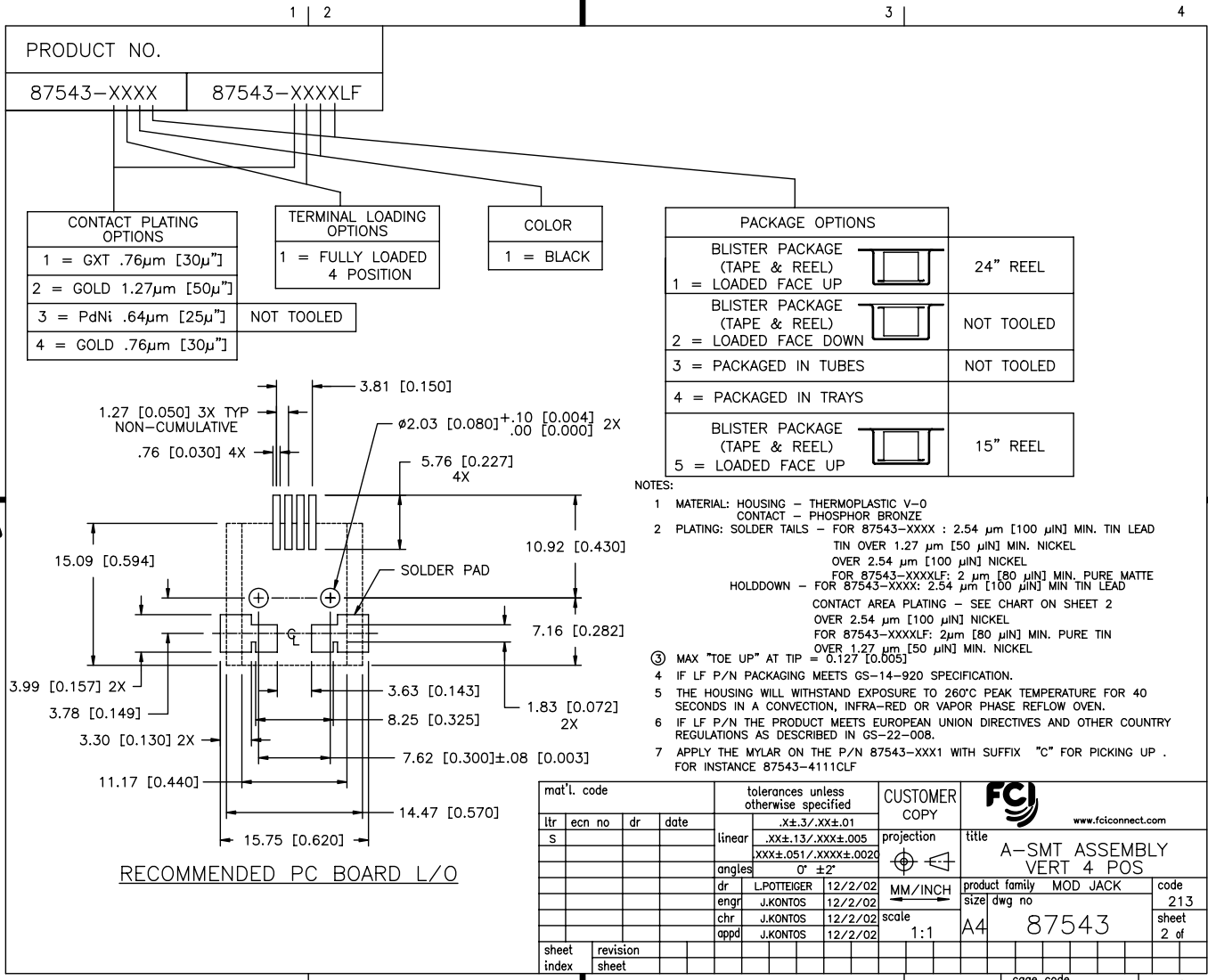
mat'l. code		tolerances unless otherwise specified		CUSTOMER COPY		FCI	
ltr	ecn no	dr	date	linear	.XX±.3/.XX±.01	projection	www.fciconnect.com
S	N08-0194	SH	09/08/08		.XX±.13/.XXX±.005	MM/INCH	title
K	V12666	LP	1/10/02		.XXX±.051/.XXX±.0020		A-SMT ASSEMBLY
L	V21834	LP	12/2/02	angles	0° ±2'		VERT 4 POS
M	V04-0861	DAI	08/30/04	dr			product family MOD JACK
N	N05-0035	YS	02/17/05	enr	J.KONTOS 12/2/02		code
P	N05-0142	ZC	6/2/05	chr	J.KONTOS 12/2/02	scale	213
R	N07-0217	WG	09/07/07	appd	J.KONTOS 12/2/02	1:1	sheet
sheet index	revision sheet	R	R				1 of 2
		1	2				

ACAD | PDM: Rev:S | STATUS: Released | cage code 22506 | 22 Aug 01, 2010

Tous droits strictement réservés. Reproduction ou communication à des tiers interdite sous quelque forme que ce soit sans autorisation écrite du propriétaire. Propriété de c FCI. Droits de reproduction FCI.



All rights strictly reserved. Reproduction or issue to third parties in any form whatever is not permitted without written authority from the proprietor. Property of FCI. Copyright FCI.



PRODUCT NO.	
87543-XXXX	87543-XXXXLF

CONTACT PLATING OPTIONS	
1 = GXT .76µm [30µ"]	
2 = GOLD 1.27µm [50µ"]	
3 = PdNi .64µm [25µ"]	
4 = GOLD .76µm [30µ"]	

TERMINAL LOADING OPTIONS	
1 = FULLY LOADED	
4 POSITION	
NOT TOOLED	

COLOR	
1 = BLACK	

PACKAGE OPTIONS		
BLISTER PACKAGE (TAPE & REEL)		24" REEL
1 = LOADED FACE UP		
BLISTER PACKAGE (TAPE & REEL)		NOT TOOLED
2 = LOADED FACE DOWN		
3 = PACKAGED IN TUBES		NOT TOOLED
4 = PACKAGED IN TRAYS		
BLISTER PACKAGE (TAPE & REEL)		15" REEL
5 = LOADED FACE UP		

- NOTES:
- MATERIAL: HOUSING - THERMOPLASTIC V-0
CONTACT - PHOSPHOR BRONZE
 - PLATING: SOLDER TAILS - FOR 87543-XXXX : 2.54 µm [100 µIN] MIN. TIN LEAD
TIN OVER 1.27 µm [50 µIN] MIN. NICKEL
OVER 2.54 µm [100 µIN] NICKEL
FOR 87543-XXXXLF: 2 µm [80 µIN] MIN. PURE MATTE
HOLDDOWN - FOR 87543-XXXX: 2.54 µm [100 µIN] MIN TIN LEAD
CONTACT AREA PLATING - SEE CHART ON SHEET 2
OVER 2.54 µm [100 µIN] NICKEL
FOR 87543-XXXXLF: 2µm [80 µIN] MIN. PURE TIN
OVER 1.27 µm [50 µIN] MIN. NICKEL
 - MAX "TOE UP" AT TIP = 0.127 [0.005]
 - IF LF P/N PACKAGING MEETS GS-14-920 SPECIFICATION.
 - THE HOUSING WILL WITHSTAND EXPOSURE TO 260°C PEAK TEMPERATURE FOR 40 SECONDS IN A CONVECTION, INFRA-RED OR VAPOR PHASE REFLOW OVEN.
 - IF LF P/N THE PRODUCT MEETS EUROPEAN UNION DIRECTIVES AND OTHER COUNTRY REGULATIONS AS DESCRIBED IN GS-22-008.
 - APPLY THE MYLAR ON THE P/N 87543-XXX1 WITH SUFFIX "C" FOR PICKING UP .
FOR INSTANCE 87543-4111CLF

mat'l. code		tolerances unless otherwise specified		CUSTOMER COPY		FCI	
ltr	ecn no	dr	date	linear	projection	www.fciconnect.com	
S				.X±.3/.XX±.01		title	
				.XX±.13/.XXX±.005		A-SMT ASSEMBLY	
				XXX±.051/.XXXX±.0020		VERT 4 POS	
				angles 0° ±2°		product family	MOD JACK
				dr L.POTTEIGER 12/2/02	MM/INCH	code	213
				enrg J.KONTOS 12/2/02	scale	size	dwg no
				chr J.KONTOS 12/2/02	1:1	87543	sheet
				appd J.KONTOS 12/2/02			2 of
sheet	revision						
index	sheet						

RECOMMENDED PC BOARD L/O

ACAD

PDM: Rev: S

STATUS: Released 2006 Printed: Aug 03, 2006