

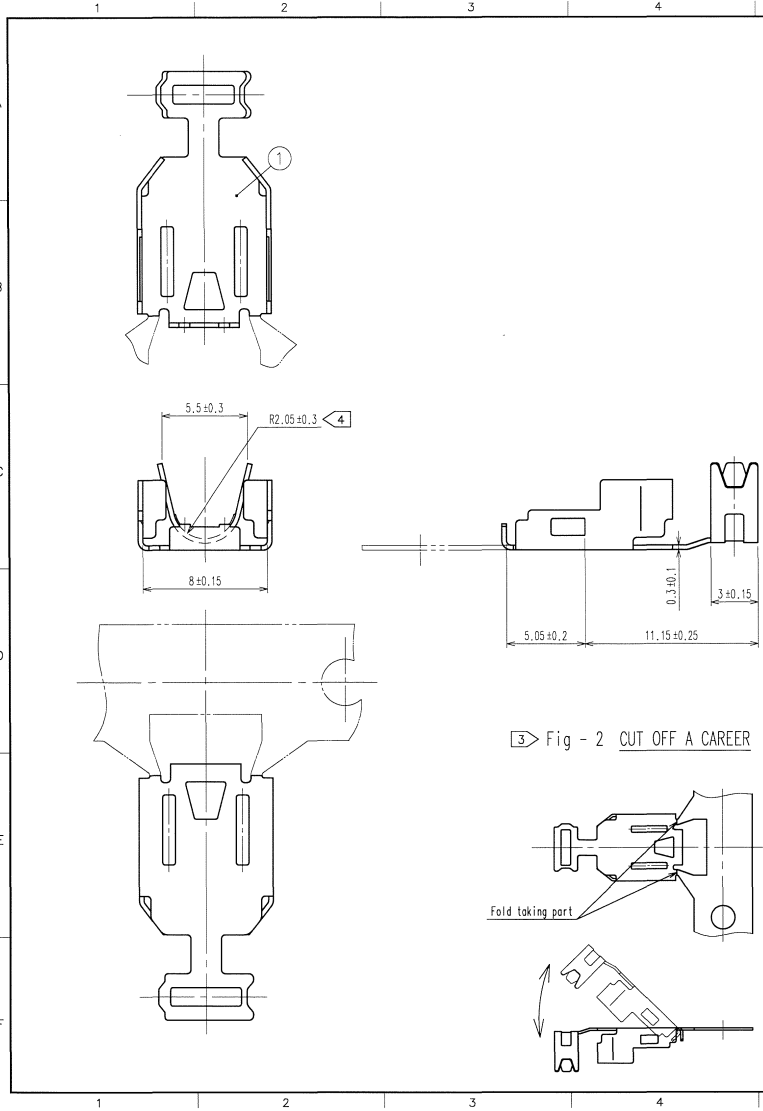
2007/08/24 01:10:18 MY.NAGASHIMA

DRAWING FOR REFERENCE: This is subject to change without notice

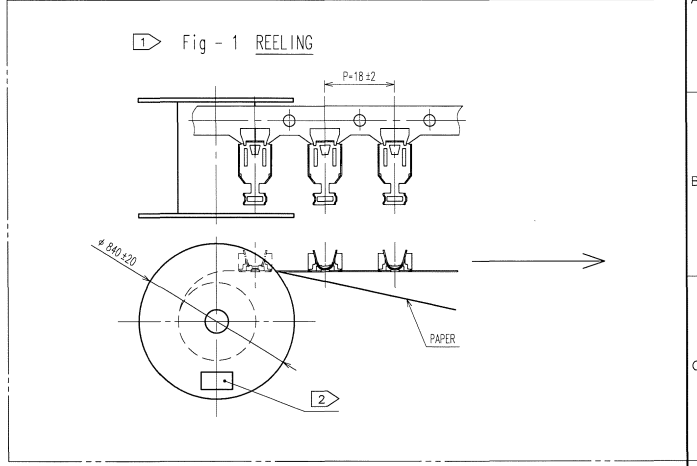
| |
|----|
| TO |
| |
| |
| |

| COUNT | DESCRIPTION OF REVISIONS | BY | CHKD | DATE | COUNT | DESCRIPTION OF REVISIONS | BY | CHKD | DATE |
|--|-----------------------------|---------------------------------------|----------------------------|------|----------------------------|--------------------------|--------------------------|--------------------|----------|
| △ | | | | | △ | | | | |
| △ | | | | | △ | | | | |
| APPLICABLE STANDARD | | USB2.0 SPECIFICATION | | | | | | | |
| RATING | OPERATING TEMPERATURE RANGE | 0 °C TO +50 °C | | | STORAGE TEMPERATURE RANGE | -20 °C TO +60 °C | | | |
| | VOLTAGE | - | | | OPERATING HUMIDITY RANGE | - % TO - % | | | |
| | CURRENT | - | | | APPLICABLE CABLE | USB CABLE (φ 3.8) | | | |
| SPECIFICATIONS | | | | | | | | | |
| ITEM | | TEST METHOD | | | REQUIREMENTS | | | QT | AT |
| CONSTRUCTION | | | | | | | | | |
| GENERAL EXAMINATION | | VISUALLY AND BY MEASURING INSTRUMENT. | | | ACCORDING TO DRAWING. | | | × | × |
| MARKING | | CONFIRMED VISUALLY. | | | | | | × | × |
| | | | | | | | | | |
| REMARKS | | | | | DRAWN | DESIGNED | CHECKED | APPROVED | RELEASED |
| | | | | | Y. Takeuchi 06.11.13 | Y. Takeuchi 06.11.13 | H. Kobayashi 06.11.13 | 06.11.13 | |
| Note QT:Qualification Test AT:Assurance Test ×:Applicable Test | | | | | | | | | |
| HRS HIROSE ELECTRIC CO., LTD. | | | | | SPECIFICATION SHEET | | | PART NO. ZX40-SLDB | |
| CODE NO.(OLD) CL | | | DRAWING NO. ELC4-125859 | | | CODE NO. CL242-0004-0 | | | 1/1 |

| |
|----|
| TO |
| |
| |
| |



| COUNT | DESCRIPTION OF REVISIONS | BY | CHKD | DATE | COUNT | DESCRIPTION OF REVISIONS | BY | CHKD | DATE |
|-------|--------------------------|----|------|------|-------|--------------------------|----|------|------|
| | | | | | | | | | |
| | | | | | | | | | |
| | | | | | | | | | |



- NOTES
- 1 This is delivered by a reel.QTY:4000pcs
 - 2 Shown on a reel and a box is ; * Part No.*, * Code No.*, * Lot No.*, * QTY*
 - 3 Cut off a career as shown in fig-2.
 - 4 This cable-clamping part is applied to φ3.8mm cable.

| CODE NO. (OLD) | | 1 | STAINLESS STEEL | |
|----------------|--|--------------------------|-----------------|-----------------|
| DRAWN | | NO. | MATERIAL | FINISH, REMARKS |
| Y. Takeuchi | | | | |
| DESIGNED | | | | |
| 06.11.13 | | | | |
| CHECKED | | | | |
| 06.11.13 | | | | |
| APPROVED | | | | |
| 06.11.13 | | | | |
| RELEASED | | | | |
| | | | | |
| DRAWING NO. | | PART NO. | | |
| EDC3-125859 | | ZX40-SLDB | | |
| SCALE | | CODE NO. | | |
| 4 : 1 | | CL242-0004-0 | | |
| UNITS | | 1/1 | | |
| (mm) | | FORM NO. 229 | | |
| HRS | | HIROSE ELECTRIC CO., LTD | | |