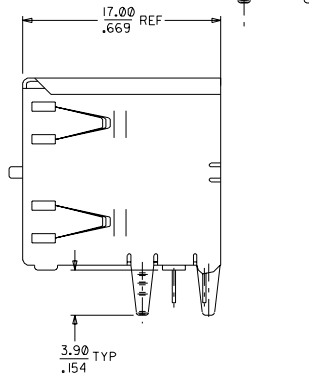
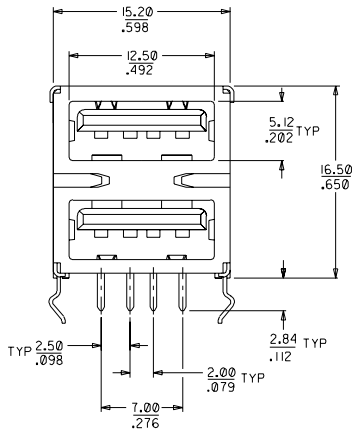
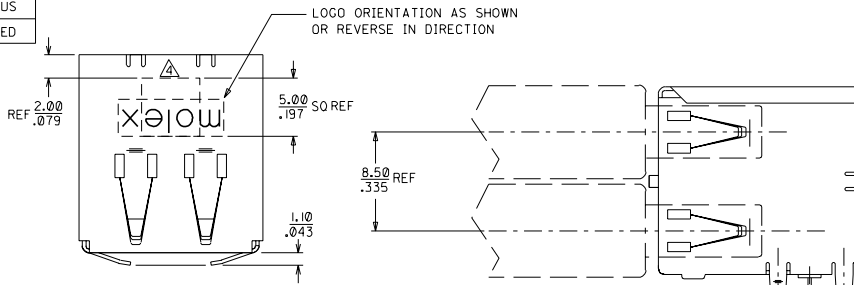
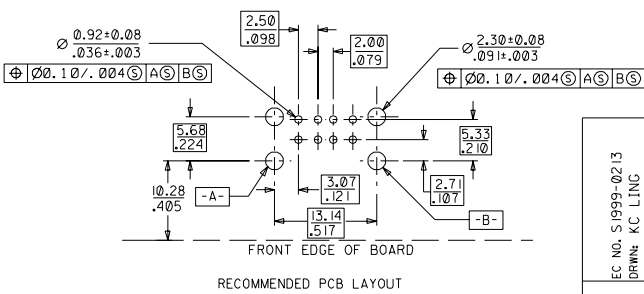
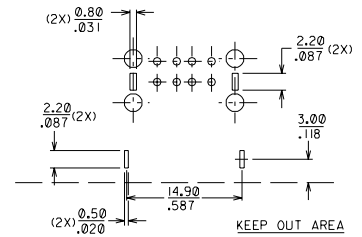
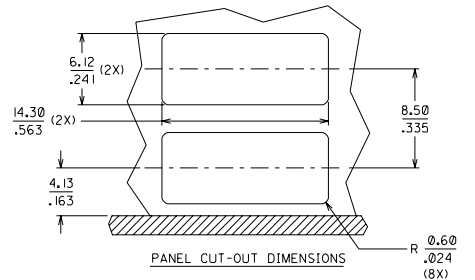


8	7	6	5	4	3	2	1
PART NUMBER	STATUS						
87525-0028	TOOLED						



- NOTES
- MATERIAL  
CONTACTS - PHOSPHOR BRONZE  
SHELL - COPPER ALLOY OR EQUIVALENT  
HOUSING - NYLON, UL94V-0, GLASS FILLED, BEIGE
  - PLATING  
CONTACTS -  
0.76um MIN GOLD ON MATING AREA, 2.50um MIN TIN-LEAD ON SOLDER-TAILS, BOTH OVER 1.27um MIN NICKEL  
SHELL -  
2.50 um MIN TIN-LEAD OVER 1.25 um MIN NICKEL
  - FOR PCB THICKNESS OF 1.60mm.
  - APPROXIMATE AREA FOR PICK & PLACE NOZZLE
  - PARTS TO BE PACKED IN CARTONS.



EC NO. S1999-0213 DRWN: KC LING CHK: A1 APPR:	QUALITY SYMBOLS	GENERAL TOLERANCES: (UNLESS SPECIFIED)	SCALE 3 : 1	DESIGN UNITS <input checked="" type="checkbox"/> mm <input type="checkbox"/> INCH	THIRD ANGLE PROJECTION	TITLE: UNIVERSAL SERIAL BUS, RIGHT-ANGLE, THROUGH-HOLE, STACKED RECEPTACLE	SHT 1	REV
	MAJOR $\nabla = 0$ CRITICAL $\nabla = 0$	mm INCH 4 PLACES $\pm 0, -$ $\pm$ 3 PLACES $\pm 0, -$ $\pm$ 2 PLACES $\pm 0, 20$ $\pm$ 1 PLACE $\pm 0, -$ $\pm$	DRAWN BY & DATE KC LING 981027	CHECKED BY & DATE PT LIM 981030	APPROVED BY & DATE SK TOH 981030	MATERIAL NO. 87525-0028	DRAWING NO. SD-87525-012	REVISION ON CAD ONLY
REV	DESCRIPTION	ANGULAR: $\pm 3^\circ$	CAD FILENAME S87525AE.S01	MATERIAL NO. 87525-0028	DRAWING NO. SD-87525-012	SHEET NO. 1 OF 1		SIZE A3

WBORD\_A,BOR REV A  
97/05/14 LEVEL 4