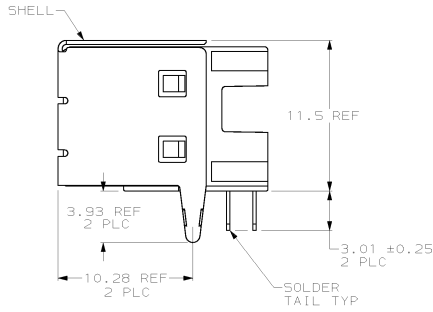
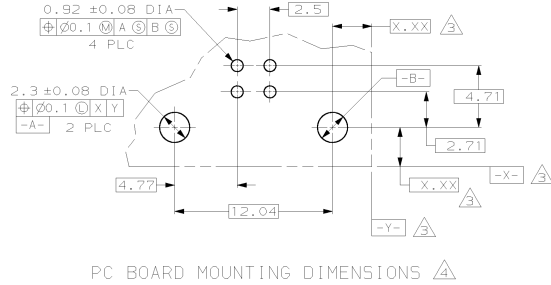
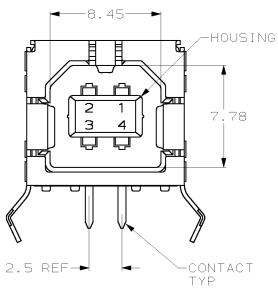
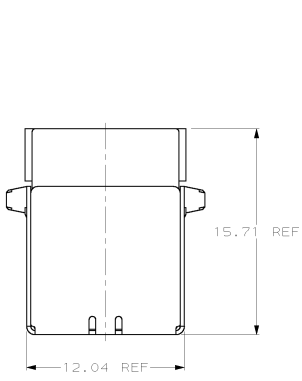


THIS DRAWING IS UNPUBLISHED. RELEASED FOR PUBLICATION
 COPYRIGHT 19 BY AMP INCORPORATED. ALL RIGHTS RESERVED.

REVISIONS				
REV	DATE	DESCRIPTION	DATE	BY
F	11 JAN 04	REVISED PER EC 0513-0426-03	JG	JG



- △ MATERIAL:
SHELL & CONTACTS; COPPER ALLOY.
HOUSING; UL 94V-0 RATED, THERMOPLASTIC, BLACK.
- △ PLATING:
CONTACTS; 0.075µm MINIMUM GOLD OVER 0.76µm MINIMUM PALLADIUM-NICKEL ON MATING AREA.
3.8µm MINIMUM TIN-LEAD ON SOLDER TAILS.
BOTH OVER 1.27µm MINIMUM NICKEL.
CONTACT ALTERNATE PLATING; 0.76µm MIN GOLD ON MATING AREA, 3.8µm MIN TIN-LEAD ON SOLDER TAILS, BOTH OVER 1.27µm MIN NICKEL.
SHELL; 5.1µm MINIMUM TIN.
- △ DATUM AND BASIC DIMENSIONS ESTABLISHED BY CUSTOMER.
- △ RECOMMENDED PC BOARD THICKNESS OF 1.57.
- △ PLATING:
CONTACTS; 0.76µm MINIMUM GOLD ON MATING AREA, 3.8µm MINIMUM TIN-LEAD ON SOLDER TAILS, BOTH OVER 1.27µm MINIMUM NICKEL.
SHELL; 5.1µm MINIMUM TIN.
- △ PLATING:
CONTACTS; 0.38µm MINIMUM GOLD ON MATING AREA, 3.8µm MINIMUM TIN-LEAD ON SOLDER TAILS, BOTH OVER 1.27µm MINIMUM NICKEL.
SHELL; 5.1µm MINIMUM TIN.

△	NO	BLACK	787780-5
△	NO	BLACK	787780-4
△	YES	BLACK	787780-3
△	YES	NATURAL	787780-2
△	NO	BLACK	787780-1
PLATING	HIGH TEMPERATURE COMPATIBLE	HOUSING COLOR	PART NUMBER

APPROVED FOR MANUFACTURE		DATE		AMP INCORPORATED	
DESIGNED BY: J. E. SHIRK		30 AUG 95		Harrisburg, PA 17105-3608	
CHECKED BY: WAYNE DAVIS		31 AUG 95		RECEPTACLE ASSEMBLY, RIGHT ANGLE, 4 POSITION, THRU-HOLE, TYPE B, UNIVERSAL SERIAL BUS	
DRAWN BY: R. WALTON		18 JUN 95			
APPROVED BY: [Signature]		[Signature]			
MATERIAL: [Blank]		WEIGHT: [Blank]		SCALE: A2 00779	
CUSTOMER DRAWING		SCALE: 5:1		SHEET 1 OF 1	