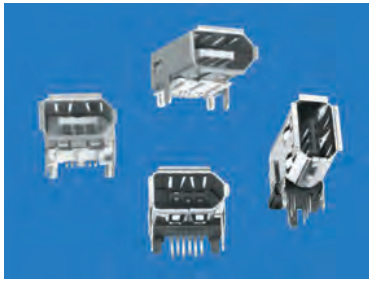


# SUPER SPEED SERIAL BUS - FIREWIRE SOCKETS

## FEATURES

- Snap-In PC tails hold connector in position for soldering
- Gold Plated contacts for low contact resistance and excellent reliability

IEEE 1394



## SPECIFICATIONS

**Shell:** Phosphor Bronze  
**Insulator:** Thermoplastic, Rated UL 94V-0  
**Contacts:** Phosphor Bronze  
**Plating:**  
**Contact Area:** Gold Flash over Nickel  
**Solder Tails:** Tin over Nickel Plate

## DESIGN ADVANTAGES

**Superfast Data Transfer:**  
 Current speeds of 100Mbps, 200Mbps and 400Mbps, and roadmapped to 1GB to 3.2 GBps per second

**Daisy Chaining:**  
 Up to to 63 devices, each one acts as an active repeater on the bus, with a maximum of 16 repeats

**Port Expansion:**  
 Alleviates restriction of limited COM Ports and available IRQ's

**Wide Bandwidth:**  
 Operates in asynchronous or isochronous data streams. Digital interface designed for high speed applications for PC peripherals, consumer electronics and communications.

**Simple Connections:**  
 True Plug and Play, no jumpers, DIP Switches or IRQ's to set

**Hot Swapping:**  
 Allows peripherals to be connected or disconnected without turning off computer

**Highly Versatile Bus:**  
 One bus can handle a variety of devices operating at different speed classes for true backwards compatibility

**Standard Digital Interface:**  
 Allows consumer electronics and computer devices to communicate together on one interface

## ELECTRICAL CHARACTERISTICS

**Rated Voltage:** 30VAC (RMS)  
**Contact Current Rating:** 1 Amp DC max.  
**Contact Resistance:** 15 mΩ  
**Insulation Resistance:** 1000 mΩ min.  
**Dielectric Withstanding Voltage:** 750V AC for 1 minute  
**Operating Temperature:** 32°F (0°C) to 104°F (40°C)  
**Capacitance:** 2pF max.

## MECHANICAL CHARACTERISTICS

**Durability:** >1500 cycles  
**Mating Force:** 35 Newtons min.  
**Withdrawal Force:** 10 Newtons min.

## DEVICE APPLICATIONS

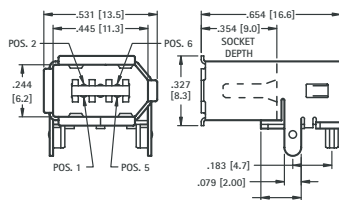
- Broadcast TV
- Cable TV
- Digital Camcorders
- Digital Cameras & VCRs
- Computers & Hard Disks
- DVD Players
- Printers & Monitors
- Stereos

FIREWIRE PLUGS & SOCKETS

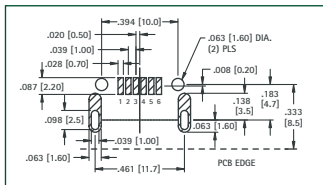
## SURFACE MOUNT

### HORIZONTAL

SUPPLIED ON TAPE AND REEL



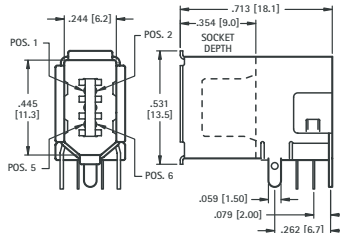
### Mounting Detail



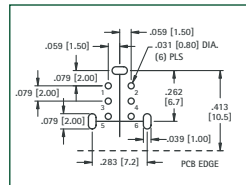
**CAT. NO. 927TR** Tape & Reel Spec's: 32mm wide; 24mm pitch; 13 inch reel (200 pieces per reel)

## THRU HOLE MOUNT

### UP-RIGHT



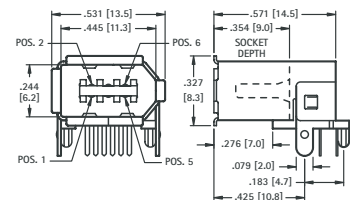
### Mounting Detail



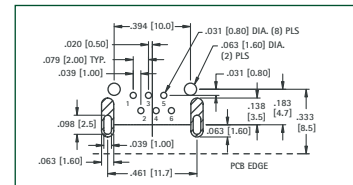
**CAT. NO. 930**

## THRU HOLE MOUNT

### HORIZONTAL



### Mounting Detail



**CAT. NO. 929**

## FIREWIRE PLUG

## FEATURES

- Modular design allows easy and fast assembly of components
  - Integrated strain relief - crimps to wire insulation
- Gold Plated contacts for low contact resistance and excellent reliability

IEEE 1394

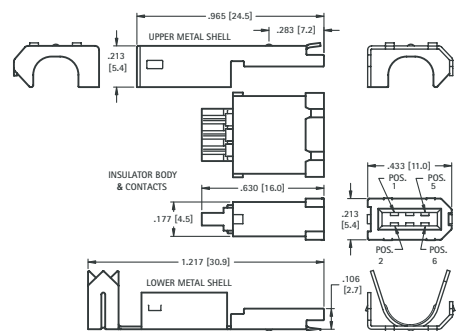


## SPECIFICATIONS

**Shell:** Phosphor Bronze  
**Insulator:** Thermoplastic, Rated UL 94V-0  
**Contacts:** Phosphor Bronze  
**Plating:**  
**Contact Area:** Gold Flash over Nickel  
**Solder Tails:** Tin over Nickel Plate

## ELECTRICAL CHARACTERISTICS

**Contact Resistance:** 30mΩ max.  
**Insulation Resistance:** 1000 mΩ min.  
**Withstanding Voltage:** 500V ± 50V DC  
**Operating Temperature:** 32°F (0°C) to 104°F (40°C)



**CAT. NO. 928** (Supplied Unassembled)

Tel (718) 956-8900 • Fax (718) 956-9040  
 (800) 221-5510 • kec@keyelco.com

**KEYSTONE**  
 RoHS COMPLIANT ~ ISO 9001 CERTIFIED

www.keyelco.com  
 31-07 20th Road - Astoria, NY 11105-1017