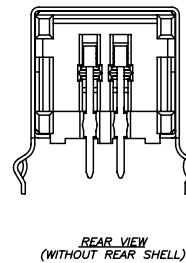
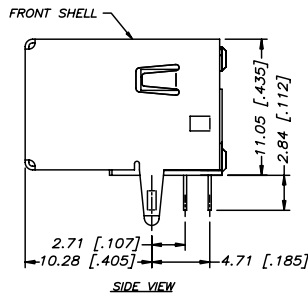
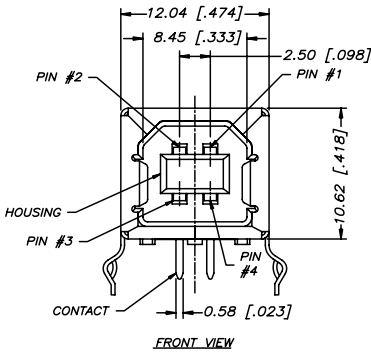


RECOMMENDED PC BOARD LAYOUT
(COMPONENT SIDE OF BOARD)



NOTES:

- MATERIALS: HOUSING: HIGH TEMPERATURE THERMOPLASTIC OR POLYESTER(SEE AMPHENOL PART NUMBER SYSTEM FOR MATERIAL OPTIONS),FLAMMABILITY UL94V-0.
COLOUR: SEE AMPHENOL PART NUMBER SYSTEM FOR COLOUR OPTIONS.
CONTACTS: PHOSPHOR BRONZE.
FRONT SHELL: COPPER ALLOY.
REAR SHELL (WHERE APPLICABLE): STEEL (SPCC).
CONTACT&SHELL PLATING:
CONTACT: PLATING SEE AMPHENOL PART NUMBER SYSTEM FOR PLATING OPTIONS.
FRONT SHELL PLATING: NICKEL OVER COPPER UNDERPLATE.
REAR SHELL PLATING:NICKEL PLATED.
- UNLESS STATED OTHERWISE, TOLERANCES ARE ± 0.30 .
- THE FINISHED CONNECTOR UE27-BCX4-XXH MUST BE ABLE TO WITHSTAND A 260°C SOLDER REFLOW PROFILE WITHOUT DAMAGE OR DISTORTION. (PEAK TEMPERATURE 260°C FOR 10s)
- ALL CONNECTOR&SHELL AND PACKING MATERIALS TO BE RoHS COMPLIANT.



MATERIAL SEE NOTES ON SHEET 1 AND AMPHENOL PART NUMBER SYSTEM ON SHEET 2	DRAWN	MTCHen	DATE	JUL31,2008	Amphenol Canada Corp.
	DESIGNED	MTCHen		JUL31,2008	
FINISH SEE NOTES ON SHEET 1 AND AMPHENOL PART NUMBER SYSTEM ON SHEET 2	CHECKED	L.CHAN		JUL31,2008	TITLE UNIVERSAL SERIAL BUS RECEPTACLE, SERIES B,RIGHT ANGLE PCB TAIL, WITHOUT REAR SHEILD- RoHS COMPLIANT
	I. E. APPRD.				
	Q. A. APPRD.				
	DWG. APPRD.				
	ENG. REL. NO.				DWG. DRAWING NO.
	REF.	EAR E12970			C
	DIMENSIONS ARE IN	mm	INCHES	03554	SCALE 4/1
					WT. _____ SURF. _____ SHEET 1 OF 2

THIS DOCUMENT CONTAINS PROPRIETARY INFORMATION AND SUCH INFORMATION MAY NOT BE DISCLOSED TO OTHERS FOR ANY PURPOSE OR USED FOR MANUFACTURING PURPOSES WITHOUT WRITTEN PERMISSION FROM AMPHENOL CANADA CORP.

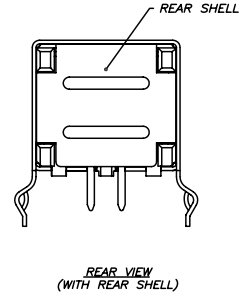
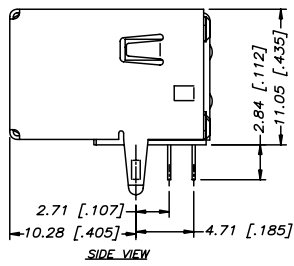
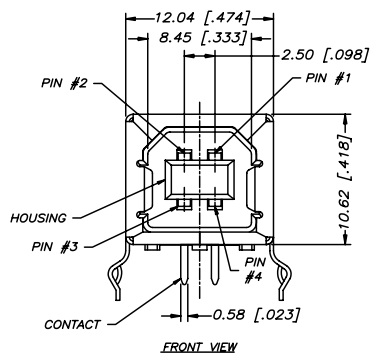
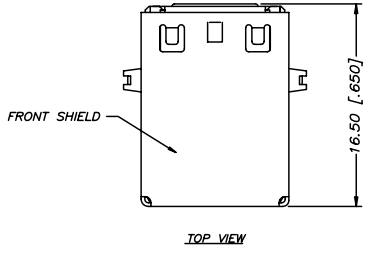
REVISIONS			
SYM	ZONE	ECN, ERN NO.	DATE
D		PLATING REVISED	Aug/09
			L.C.

AMPHENOL PART NUMBER: **UE27-BCX4-XXX**

SERIES
UE27=RECEPTACLE
TYPE
B=SERIES B
STYLE
RIGHT ANGLE PCB TAIL

MODIFIER
0= POLYESTER HOUSING (PBT MATERIAL)
H= STANDARD PRODUCT- HIGH TEMP HOUSING (SEE NOTE 3)
SHIELDING OPTION
0=NO REAR SHIELD (SEE SHEET 1 OF 2)
3=WITH REAR SHIELD
HOUSING COLOUR:
1=BLACK
2=BEIGE(AVAILABLE IN STANDARD TEMP. ONLY)

CONTACT PLATING OPTION
4=4 CONTACTS
5=30 .in[0.76 MICRONS] GOLD OVER 40 .in[1.02 MICRONS] MINIMUM NICKEL ON CONTACT MATING AREA.
100 .in[2.54 MICRONS] TIN PLATING ON CONTACT TAILS.
7=GOLD FLASH OVER 40 .in[1.02 MICRONS] MINIMUM NICKEL ON CONTACT MATING AREA.
100 .in[2.54 MICRONS] TIN PLATING ON CONTACT TAILS.



THIS DOCUMENT CONTAINS PROPRIETARY INFORMATION AND SUCH INFORMATION MAY NOT BE DISCLOSED TO OTHERS FOR ANY PURPOSE OR USED FOR MANUFACTURING PURPOSES WITHOUT WRITTEN PERMISSION FROM AMPHENOL CANADA CORP.

MATERIAL SEE NOTES ON SHEET 1 AND AMPHENOL PART NUMBER SYSTEM ON SHEET 2	DRAWN MTChen DATE JUL31,2006	Amphenol Canada Corp.
DESIGNED MTChen JUL31,2006	CHECKED L.CHAN JUL31,2006	
I. E. APPRD.	Q. A. APPRD.	
DWG. APPRD.		
FINISH SEE NOTES ON SHEET 1 AND AMPHENOL PART NUMBER SYSTEM ON SHEET 2	ENG. REL. NO. REF. EAR E12970	TITLE UNIVERSAL SERIAL BUS RECEPTACLE, SERIES B,RIGHT ANGLE PCB TAIL, WITHOUT REAR SHEILD- RoHS COMPLIANT
DIMENSIONS ARE IN mm/INCHES	CODE ID. NO. 03554	DWG. C DRAWING NO. P-UE27-BCX4-XXX REV. D
SCALE 4/1		WT. _____ SURF. _____ SHEET 2 OF 2