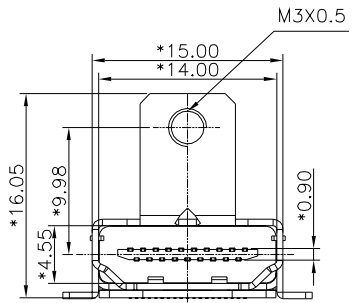
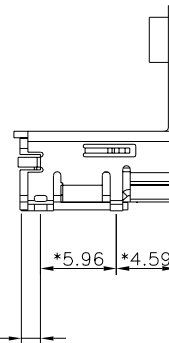
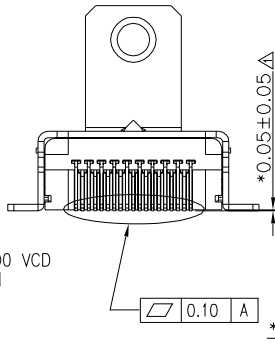
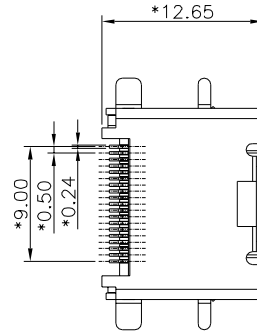


PC Board Layout T=1.6mm
Component Side Shown Tolerance±0.05mm



NOTES:
ELECTRICAL

1. VOLTAGE RATING : 30 VDC RMS
2. CURRENT RATING :0.5AMP MAX PER CONTACT
3. CONTACT RESISTANCE : 30 MILLIOHMS MAX.
4. INSULATION RESISTANCE : 1000 MEGOHMS MIN @ 500 VCD
5. WITHSTANDING VOLTAGE : 500 VAC RMS 60Hz , 1MIN
6. OPERATING : 10000 CYCLES MIN

MECHANICAL :

1. HOUSING MATERIAL : NYLON
2. CONTACT MATERIAL : PHOSPHOR BRONZE 0.20mm THICKNESS
3. PLATING : 30u" GOLD PLATING OVER NICKEL
4. SHIELD MATERIAL : COPPER ALLOY 0.50mm THICKNESS
5. PLATING : NICKLE PLATING.

ENVIRONMENTAL:

1. STORAGE TEMPERATURE : -40°C TO +85°C
2. OPERATION TEMPERATURE : -40°C TO +85°C
3. WAVE SOLDERING TEMPERATURE: 255~265°C (5~10 SECONDS).
4. RoHS COMPLIANT.

PART NUMBER
E810K-SAY104-L

UNITS (INCH) TOLERANCES EXCEPT AS NOTED .0 ± 0.2 ± .00 ± 0.15 ± .000 ± 0.075 ± ANGLES ± 0.5 THIRD ANGLE PROJECTION	RoHS Compliant	
	TITLE HDMI JACK(WITH SCREW)	
DFTO Cathy DATE 2006/09/07	DRAWING NO. CE813029-LA /PART NO. SEE TABLE	SIZE REV A3 0
SCALE :	DO NOT SCALE DRAWING	SHEET 1 OF 1

8 | 7 | 6 | 5 | 4 | 3 | 2 | 1

H
G
F
E
D
C
B
A