

NOTES:
ELECTRICAL

1. VOLTAGE RATING : 30 VDC RMS
2. CURRENT RATING : 0.5AMP MAX PER CONTACT
3. CONTACT RESISTANCE : 30 MILLIOHMS MAX.
4. INSULATION RESISTANCE : 1000 MEGOHMS MIN
5. WITHSTANDING VOLTAGE : 500 VAC RMS 60Hz , 1MIN
6. OPERATING LIFE : 10000 CYCLES MIN @ 500 VCD

MECHANICAL :

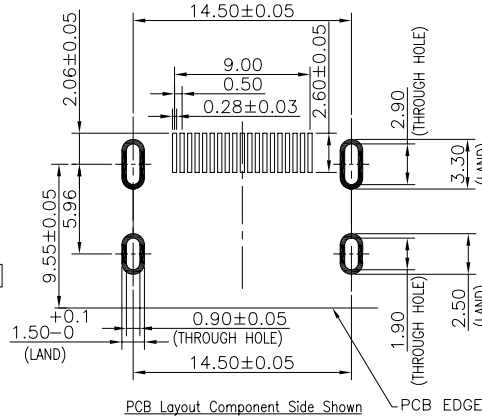
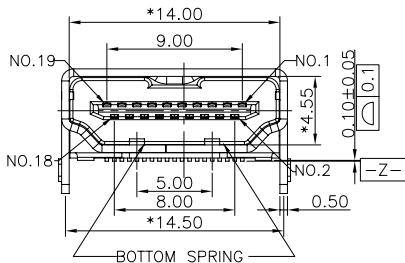
1. HOUSING MATERIAL : NYLON+30%G.F UL94V-0.COLOR:BLACK.
2. CONTACT MATERIAL : PHOSPHOR BRONZE 0.20mm THICKNESS
3. PLATING : 1: CONTACT AREA - SELECTIVE GOLD PLATING
2: TAILS- 120U" MIN OVER NICKEL.
4. SHIELD MATERIAL : PHOSPHOR BRONZE 0.50mm THICKNESS
5. PLATING : PLATED NICKEL.

ENVIRONMENTAL:

1. STORAGE : -40°C TO +85°C
2. OPERATION : -40°C TO +85°C
3. IR REFLOW PEAK SOLDERING TEMPERATURE: 255°C TO 265°C (5-10 SECONDS).
4. RoHS COMPLIANT.
5. FRE OLD DRAWING NUMBER:GE813024-LA.

TABLE

RoHS PART NUMBER:	REV	HS'G MATERIAL	COLOR	UTP/STP TYPE	PIN NUMBER	PLATING Au
E810K-SB0G13-L	A	NYLON+GF30%	BLACK	STP/DIP FEET TYPE	19 PINS	15U"
E810K-SB0G14-L	A	NYLON+GF30%	BLACK	STP/DIP FEET TYPE	19 PINS	30U"



The drawing Can Only Supply To Customer

DETACHED LISTS TOLERANCES EXCEPT AS NOTED MM (INCH) .0 ± 0.2 ± .00 ± 0.15 ± .000 ± 0.075 ± ANGLES ± 0.5 THIRD ANGLE PROJECTION	RoHS Compliant		Pulse A TECHNITROL COMPANY	
	TITLE HDMI CONNECTOR WITHOUT PANEL A TYPE			
DFTO Yumei	DRAWING NO. CE810K-SB0G1X-L	SIZE A3	REV 0	
DATE 02/14/2007	/PART NO. E810K-SB0G1X-L	DO NOT SCALE DRAWING		SHEET 1 OF 1
SCALE : 2.5:1				

8

7

6

5

4

3

2

1

H
G
F
E
D
C
B
A