

4

3

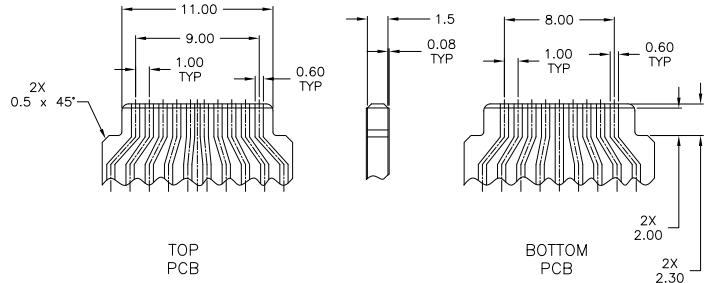
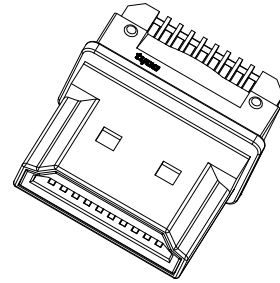
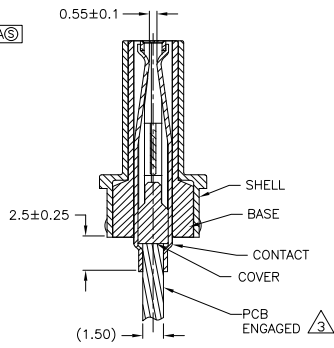
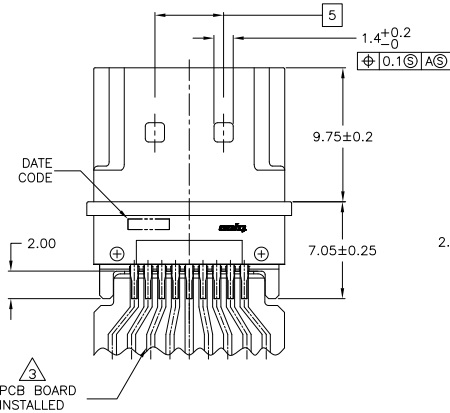
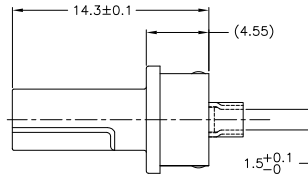
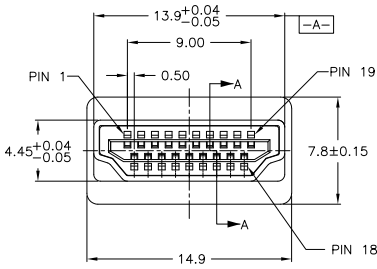
2

1

THIS DRAWING IS UNPUBLISHED. RELEASED FOR PUBLICATION. ALL RIGHTS RESERVED.

LOC		DIST		REVISIONS			
F	LN	DESCRIPTION	DATE	BY	APPD		
	B1	REVISED PER ECO-11-004835	11MAR11	RK	HMR		

- 1 MATERIAL:
CONTACTS: PHOSPHOR BRONZE.
BASE & COVER: LCP, UL94V0, COLOR-BLACK.
SHELL: ZINC ALLOY
- 2 FINISH:
CONTACT: 0.381µm MIN GOLD PLATE IN MATING AREA,
2.54µm MIN MATTE TIN PLATE IN SOLDER AREA, 1.27µm MIN NICKEL UNDERPLATE ON ENTIRE CONTACT.
SHELL: 2.03µm MIN NICKEL PLATE OVER 2.54µm MIN COPPER UNDERPLATE.
- 3 PCB TO BE SUPPLIED BY CUSTOMER AND IS SHOWN FOR REFERENCE.



1888510-1 PART NUMBER

THIS DRAWING IS A CONTROLLED DOCUMENT.		DM S. MCMASTER 24MAY08	TE Connectivity
DIMENSIONS: mm		DR. W. MILLHIMES 24MAY08	
TOLERANCES UNLESS OTHERWISE SPECIFIED:		APPC W. MILLHIMES 24MAY08	PLUG STRADDLE MOUNT, 19 POSITION, HDMI
0 PLG ± 0.3 1 PLG ± 0.3 2 PLG ± 0.05 3 PLG ± 0.3 4 PLG ± 0.3 ANGLES ± 1°		APPLICATION SPEC: —	
MATERIAL	FINISH	WEIGHT: —	RESTRICTED TO: —
CUSTOMER DRAWING		SIZE: A2	SCALE: 5:1
		CAGE CODE: 00779	DRAWING NO: 1888510
		SHEET 1 of 1	

1888510

A