

4

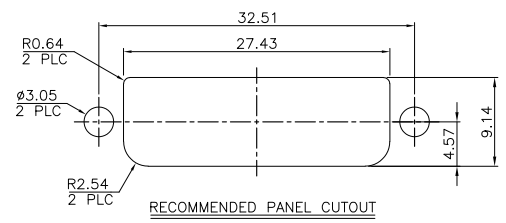
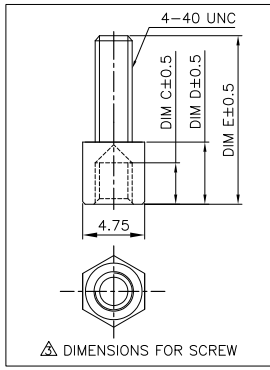
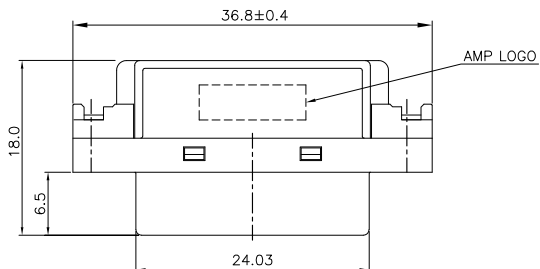
3

2

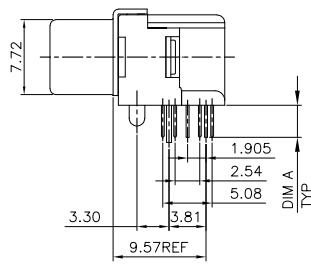
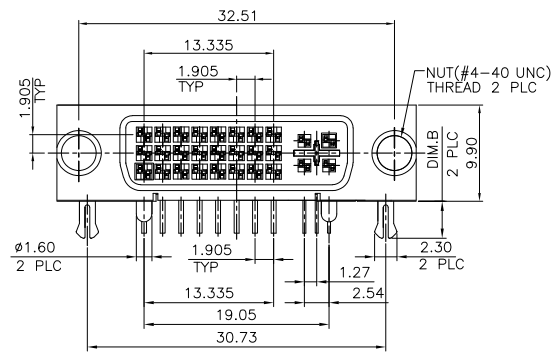
1

THIS DRAWING IS UNPUBLISHED. RELEASED FOR PUBLICATION
 © COPYRIGHT BY TYCO ELECTRONICS CORPORATION. ALL RIGHTS RESERVED.

LOC	DIST	REVISIONS				
P	LTR	DESCRIPTION	DATE	DWN	APVD	
DW						
C1		REVISED PER ECO-10-000444	18JAN10	KK	HMR	

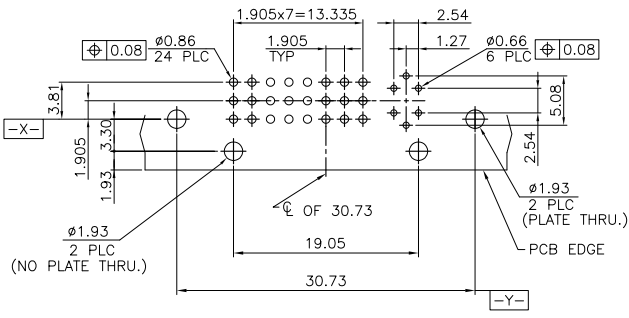


- NOTE:
- MATERIAL: HOUSING: SPS WITH 30% GF, UL 94V-0, WHITE COLOR. SPACER: SPS WITH 30% GF, UL 94V-0, NATURE COLOR. CONTACTS: PHOSPHOR BRONZE. SHELL: SPCC NUTS AND BOARDLOCKS: BRASS.
 - FINISH: CONTACTS: (SEE TABLE) GOLD PLATED ON CONTACT AREA. 2.54mm [100m] MIN. TIN PLATED ON SOLDER TAIL, WITH ENTIRE CONTACT UNDERPLATED 1.27mm [50m] MIN. NICKEL. SHELL: 1.27mm [50m] MIN. NICKEL PLATED. NUTS: 1.27mm [50m] NICKEL PLATED. BOARDLOCKS: 2.54mm [100m] MIN. TIN PLATED OVER 1.27mm [50m] MIN. NICKEL UNDERPLATED OVERALL.
- △ #4-40 UNC SCREW. MATERIAL : BRASS PLATING : 1.27mm [50m] MIN. NICKEL PLATED OVERALL. △ SCREW SEPARATELY PACKED.



△ OBSOLETE PARTS: OBSOLETE CIS STREAMLINING PER D.RENAUD/D.SINISI

DIM E	DIM D	DIM C	DIM B	DIM A				
11.8	4.8	3.2	2.50	3.30	W/	GOLD FLASH	3-1734148-1	
△ OBSOLETE	13.0	6.0	4.4		△ W/	GOLD FLASH	2-1734148-1	
	13.0	6.0	4.4		W/	0.76µm[30µ]	1-1734148-3	
	13.0	6.0	4.4		W/	0.254µm[10µ]	1-1734148-2	
	13.0	6.0	4.4	2.50	2.34	W/	GOLD FLASH	1-1734148-1
						W/O	0.76µm[30µ]	1734148-3
						W/O	0.254µm[10µ]	1734148-2
						W/O	GOLD FLASH	1734148-1
					△ SCREW	GOLD PLATED	PART NUMBER	



RECOMMENDED PCB LAYOUT
 TOP VIEW, TOLERANCE: ±0.05

THIS DRAWING IS A CONTROLLED DOCUMENT.

DIMENSIONS: MM	TOLERANCES UNLESS OTHERWISE SPECIFIED:	DWN S. CHIEN 05MAR2008	Tyco Electronics Corporation Taipei, Taiwan
0 PLC ± -	1 PLC ± 0.35	CHK S. HOU 05MAR2008	
2 PLC ± 0.25	3 PLC ± 0.15	APVD W. KODAMA 05MAR2008	
4 PLC ± -	ANGLES ± 1°	NAME	DVI-I ANALOG & DIGITAL CONN., RCPT. RIGHT-ANGLE
MATERIAL SEE NOTE	FINISH SEE NOTE	PRODUCT SPEC	SIZE CAGE CODE DRAWING NO RESTRICTED TO
		108-1941	A3 00779 C=1734148
		WEIGHT 10g	SCALE SHEET 1 of 2 REV C1
		CUSTOMER DRAWING	

4

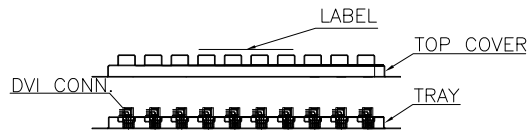
3

2

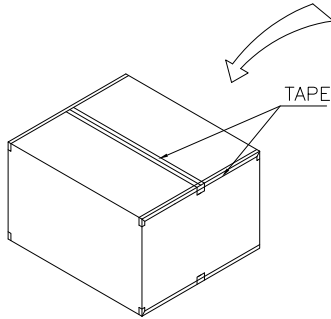
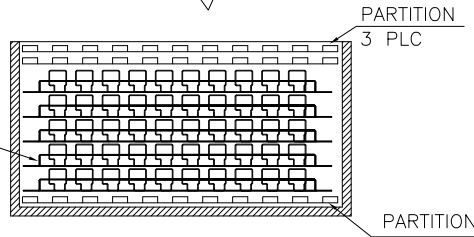
1

THIS DRAWING IS UNPUBLISHED. RELEASED FOR PUBLICATION
 © COPYRIGHT - BY TYCO ELECTRONICS CORPORATION. ALL RIGHTS RESERVED.

LOC	DIST	REVISIONS				
P	LTR	DESCRIPTION	DATE	DWN	APVD	
		SEE SHEET 1.				



18.1	275	340	TOP COVER
10.5	275	340	TRAY
146	278	340	BOX
H	W	L	SIZE PACK



4.43 Kg	3.50 Kg	70	5	350 PCS
GROSS WEIGHT	NET WEIGHT	PCS/TRAY	TRAYS /BOX	QUANTITY

THIS DRAWING IS A CONTROLLED DOCUMENT.

DIMENSIONS: MM	TOLERANCES UNLESS OTHERWISE SPECIFIED: 0 PLC ± - 1 PLC ± - 2 PLC ± - 3 PLC ± - 4 PLC ± - ANGLES ± -	DWN CHK APVD	Tyco Electronics Corporation Taipei, Taiwan	
MATERIAL	FINISH	PRODUCT SPEC APPLICATION SPEC WEIGHT	NAME DVI-I ANALOG & DIGITAL CONN., RCPT. RIGHT-ANGLE	
		SIZE A3	CAGE CODE 00779	DRAWING NO C-1734148
		CUSTOMER DRAWING		RESTRICTED TO
		SCALE	SHEET	REV

CUSTOMER DRAWING SCALE - SHEET 2 of 2 REV C1