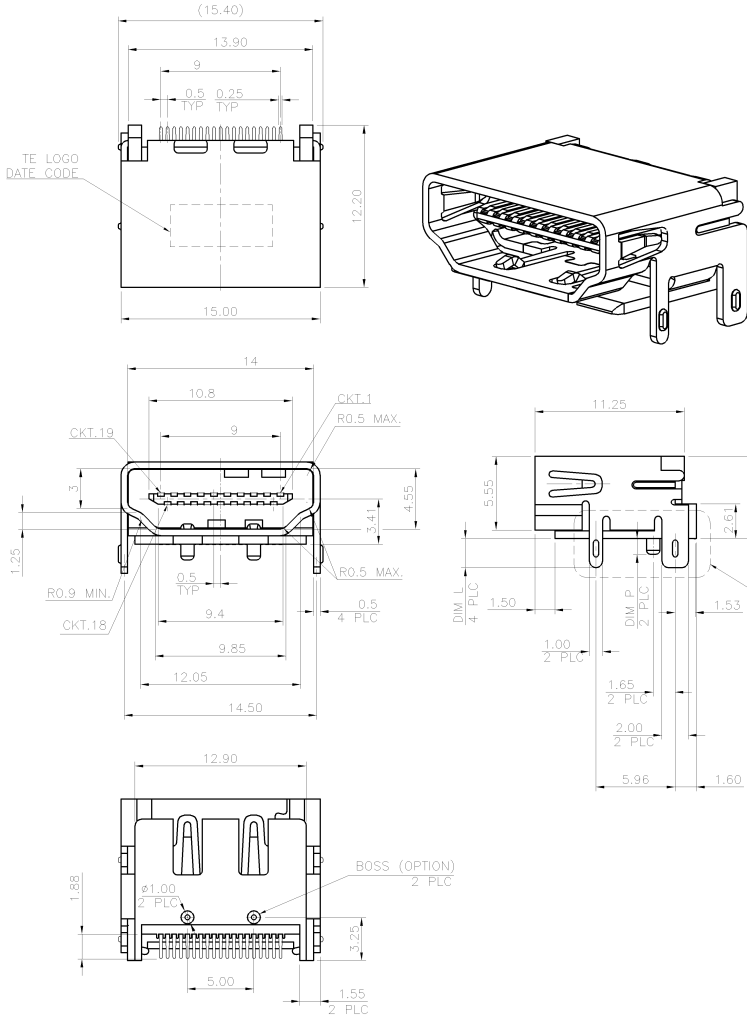
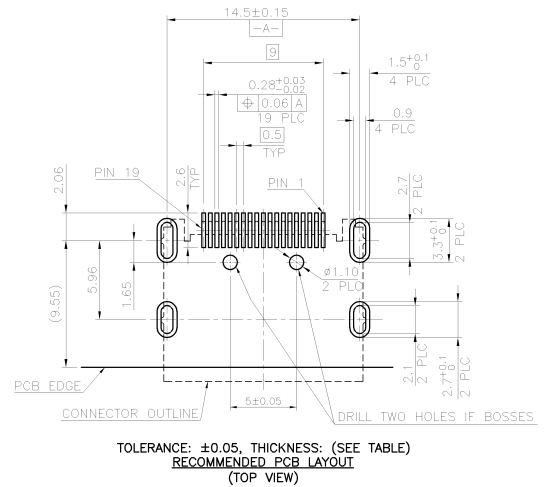


LOC		DIST		REVISIONS			GATE	DRAWN	APPROV
DW	---	F	LWR	DESCRIPTION			DBMAR10	AW	WK
		D		ECR-10-005078					



NOTES:

- MATERIAL:
HOUSING: LCP WITH 30% GF, UL94 V-0, BLACK COLOR.
CONTACTS: PHOSPHOR BRONZE.
SHELL: PHOSPHOR BRONZE.
 - FINISH:
CONTACTS: (SEE TABLE) GOLD PLATED ON CONTACT AREA, 2.54μm [100μ"] MIN. MATTE-TIN PER 112-65-1 ON SOLDER TAIL, WITH ENTIRE CONTACT UNDERPLATED 1.27μm [50μ"] MIN. NICKEL.
SHELL: 1.27μm [50μ"] MIN. NICKEL PLATED.
 - REFLOW SOLDER CAPABLE TO 260°C PER TEC-109-201.
- ⚠️ OBSOLETE PARTS: OBSOLETE CIS STREAMLINING PER D.RENAUD/D.SINISI



THIS DRAWING IS A CONTROLLED DOCUMENT.		SEE SHEET 2	
BOARDLOCK CONFIGURATION	DAN A_WU 07MAY2008	DIM L	DIM P
PCB THICKNESS	CHK S_CHIEN 07MAY2008	BOSSES	MIN. GOLD THICKNESS
	APPD W_KODAMA 07MAY2008	PART NUMBER	
DIMENSIONS: MM TOLERANCES UNLESS OTHERWISE SPECIFIED: Ø PLC ± 0.1 Ø PLC ± 0.3 Ø PLC ± 0.25 Ø PLC ± 0.2 H PLC ± 0.1 H PLC ± 0.3		Tyco Electronics Corporation Taipei, Taiwan HDMI CONNECTOR, TYPE A RECEPTACLE, 3.41 CL, SMT	
MATERIAL	FINISH	WEIGHT	RESTRICTED TO
SEE NOTE	SEE NOTE	3.18 GRAMS	---
CUSTOMER DRAWING		SIZE	CAGE CODE
		A2	00779
		DRAWING NO.	
		C=1775040	
		SCALE	SHEET 1 of 3
			REV D

4

3

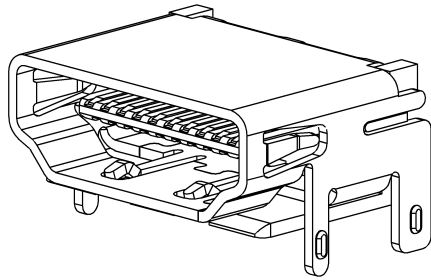
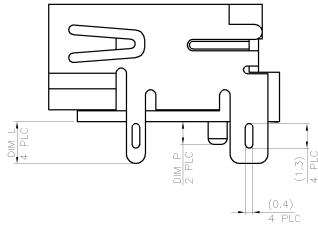
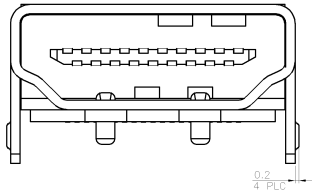
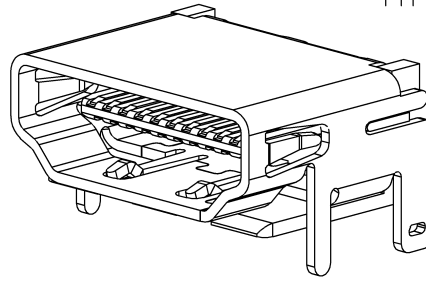
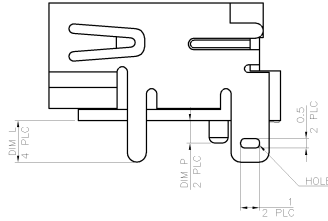
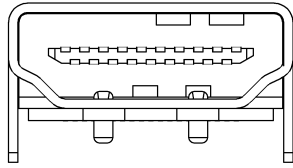
2

1

THIS DRAWING IS UNCLASSIFIED. RELEASED FOR PUBLICATION
 © Copyright 2010 BY TYCO ELECTRONICS CORPORATION. ALL RIGHTS RESERVED.

LOC	REV	DATE	DESCRIPTION	GATE	MAN	APP'D
DW	—	—	—	—	—	—
SEE SHEET 1.						

TYPE 1



TYPE 2

- ⚠ OBSOLETE
- ⚠ OBSOLETE
- ⚠ OBSOLETE
- ⚠ OBSOLETE
- ⚠ OBSOLETE

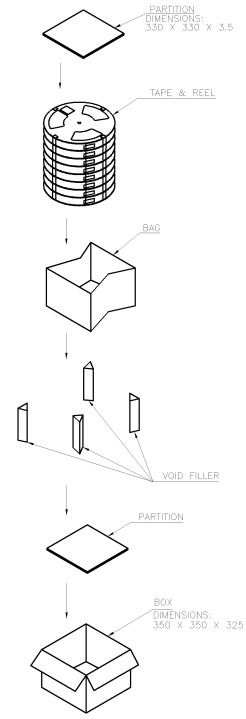
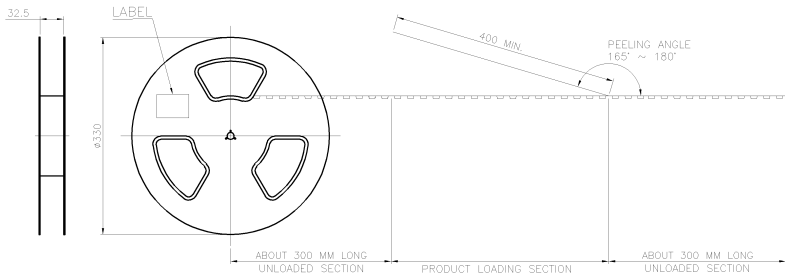
TYPE	BOARDLOCK CONFIGURATION	PCB THICKNESS	DIM L	DIM P	BOSSES	MIN. GOLD THICKNESS	PART NUMBER
TYPE 2	1.6±0.15	2.20	N/A	W/O		0.762µm [30µ"]	1-1775040-8
						0.381µm [15µ"]	1-1775040-7
TYPE 1	1±0.15	1.00	1.20	W/		GOLD FLASH	1-1775040-6
						0.762µm [30µ"]	1-1775040-5
						0.381µm [15µ"]	1-1775040-4
			N/A	W/O		GOLD FLASH	1-1775040-3
						0.762µm [30µ"]	1-1775040-2
						0.381µm [15µ"]	1-1775040-1
1.6±0.15	2.20	1.20	W/		GOLD FLASH	1-1775040-9	
					0.762µm [30µ"]	1775040-8	
					0.381µm [15µ"]	1775040-5	
N/A	W/O			GOLD FLASH	1775040-7		
				0.762µm [30µ"]	1775040-6		
					GOLD FLASH	1775040-4	
					0.381µm [15µ"]	1775040-3	
					GOLD FLASH	1775040-2	
					GOLD FLASH	1775040-1	

THIS DRAWING IS A CONTROLLED DOCUMENT.

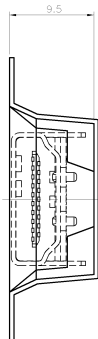
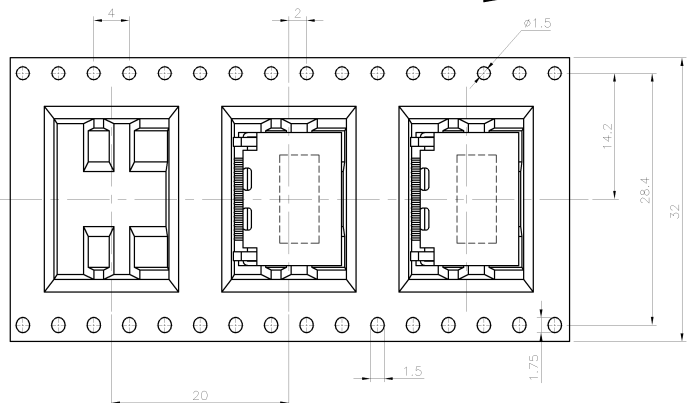
DRAWN	A. WU	07MAY2008	Tyco Electronics Corporation Taipai, Taiwan							
CHEK	S. CHIEN	07MAY2008								
APPRO	W. KODAMA	07MAY2008	HDMI CONNECTOR, TYPE A RECEPTACLE, 3.41 CL, SMT							
PRODUCT SPEC	—	—								
APPLICATION SPEC	—	—	SIZE	A2	CAGE CODE	00779	DRAWING NO.	C=1775040	RESTRICTED TO	—
MATERIAL	—	—	WEIGHT	—	—	—	—	—	—	—
FINISH	—	—	CUSTOMER DRAWING		SCALE	—	SHEET	2 of 3	REV	D

C=1775040

A



USER DIRECTION OF UNREELING →



- NOTES:
1. PEELING STRENGTH: 0.1 ~ 1.3 N (10 ~ 130 GRAMS)
 2. PEELING SPEED: 300 mm/min.

350	8	2800	10.6	6.47
PCS/REELS/TAPE	BOX	QUANTITY	GROSS WEIGHT	NET WEIGHT

THIS DRAWING IS A CONTROLLED DOCUMENT. DAN A WU 07MAY2008
 CHK S CHIEN 07MAY2008
 APD W KODAMA 07MAY2008

Tyco Electronics
 Tyco Electronics Corporation
 Taipei, Taiwan

HDMI CONNECTOR, TYPE A RECEPTACLE, 3.41 CL, SMT

SIZE: A2
 CASE CODE: 00779
 DRAWING NO: C=1775040

CUSTOMER DRAWING SCALE: SHEET 3 of 3