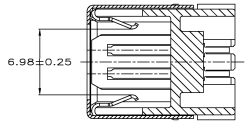
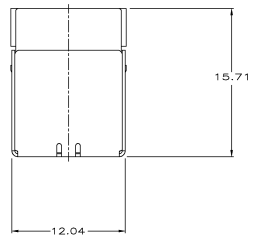
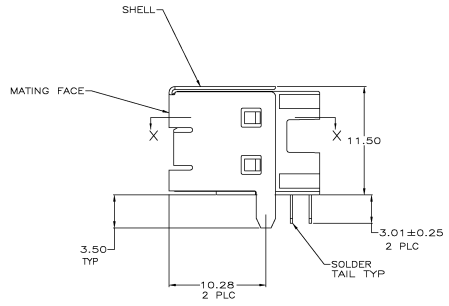
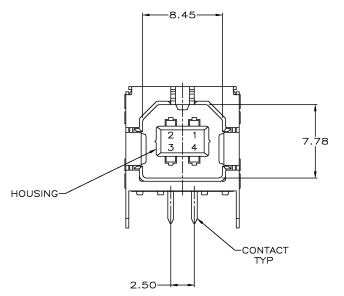


REV	DATE	DESCRIPTION	BY	CHK	APP
C1	REVISED	SCR-08-0092688	YANGRUI	A.Z	S.Y
C2	REVISED	PER ECO-09-021828	STANISLAV	KR	JMR

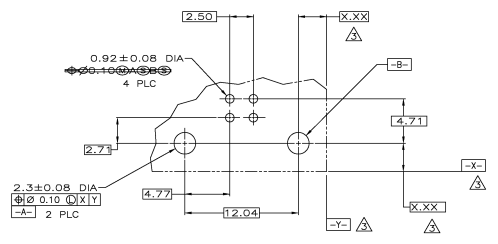


SECTION X-X



- △ CONTACTS: COPPER ALLOY.
SHELL: COPPER ALLOY.
- △ HOUSING: UL 94V-0 RATED THERMOPLASTIC, COLOR: SEE TABLE.
- △ CONTACTS: 0.076 μm MINIMUM GOLD OVER
0.76 μm MINIMUM PALLADIUM NICKEL ON MATING AREA.
3.80 μm MINIMUM MATTE TIN ON SOLDER TAILS
ALL OVER 1.27 μm MINIMUM NICKEL.
SHELL: 2~5 μm MINIMUM BRIGHT TIN.
- △ DATUM AND BASIC DIMENSIONS ESTABLISHED BY CUSTOMER.
- △ RECOMMENDED PC BOARD THICKNESS 1.57.
- △ CONTACTS: 0.076 μm MINIMUM GOLD OVER
0.76 μm MINIMUM PALLADIUM NICKEL ON MATING AREA.
3.80 μm MINIMUM MATTE TIN ON SOLDER TAILS
ALL OVER 1.27 μm MINIMUM NICKEL.
SHELL: 1.27 μm MINIMUM NICKEL ALL OVER, TIN DIPPED
ON TAILS.
- 6 RECOMMEND:
MATING FORCE: 35N MAX.
UNMATING FORCE: 13N MIN.
RECOMMENDED MATING PLUG SHOULD MEET USB2.0
STANDARD.

△ OBSOLETE PARTS: OBSOLETE CIS STREAMLINING PER D.RENAUD/D.SINISI



RECOMMENDED PC BOARD MOUNTING DIMENSIONS

OBsolete	YES	NO	FINISH	BLACK	292317-4
△	YES	NO	△	BLACK	292317-3
△	YES	NO	△	BLACK	292317-1
△	YES	NO	△	BLACK	292317-3

OBsolete	YES	NO	FINISH	BLACK	292317-4
△	YES	NO	△	BLACK	292317-3
△	YES	NO	△	BLACK	292317-1
△	YES	NO	△	BLACK	292317-3

OBsolete	YES	NO	FINISH	BLACK	292317-4
△	YES	NO	△	BLACK	292317-3
△	YES	NO	△	BLACK	292317-1
△	YES	NO	△	BLACK	292317-3