

4

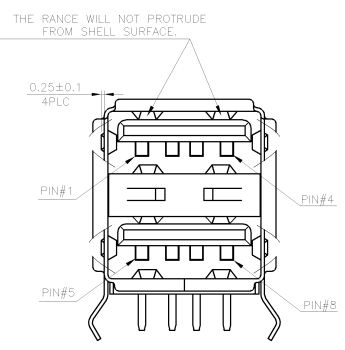
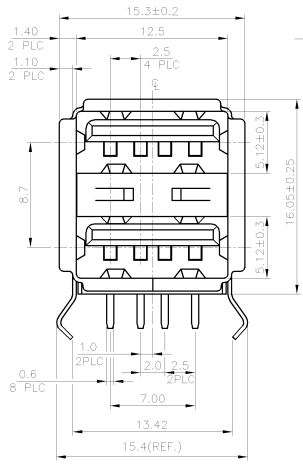
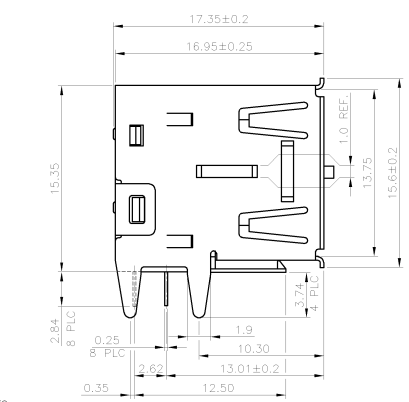
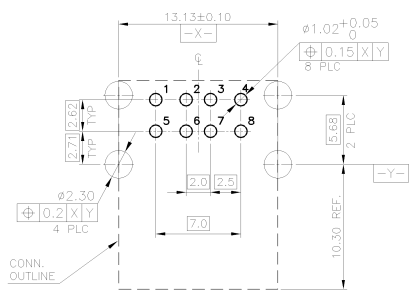
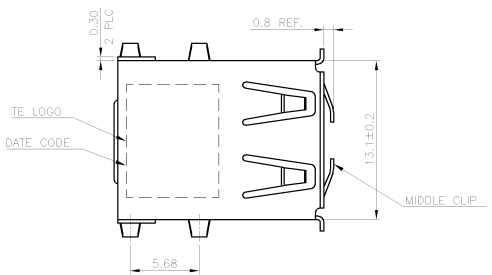
3

2

1

THIS DRAWING IS UNPUBLISHED. RELEASED FOR PUBLICATION AUG. 2006.
 COPYRIGHT - BY TYCO ELECTRONICS CORPORATION. ALL RIGHTS RESERVED.

LOC	DIST	REVISIONS			
P	LTR	DESCRIPTION	DATE	DWN	APVD
DW		REVISED. (ECR-10-016210)	25OCT10	JC	WK



(USB MATING STATUS)
RANGE PROTRUDE FROM SHELL SURFACE:0.25±0.1

- NOTES:
- MATERIAL:
HOUSING: (SEE TABLE) UL 94V-0, COLOR: BLACK.
CONTACTS: BRASS.
SHELL: SPCC
BACK COVER: SPCC
MIDDLE CLIP: SPCC
 - FINISH:
CONTACTS:
GOLD PLATED(SEE TABLE) IN CONTACT AREA,
2.54um[100u"] MIN. MATTE TIN PLATING ON SOLDER TAILS,
1.27um[50u"] MIN. NICKEL UNDERPLATING OVERALL.
SHELL:
2.54um[100u"] MIN. BRIGHT TIN PLATING OVERALL,
1.27um[50u"] MIN. NICKEL UNDERPLATED OVERALL.
BACK COVER:
1.27um[50u"] MIN. NICKEL PLATING OVERALL.
MIDDLE CLIP:
1.27um[50u"] MIN. NICKEL PLATING OVERALL.
 - WAVE SOLDER CAPABLE TO 265°C PER TE SPEC. 109-202, CONDITION B.

MIDDLE CLIP	BACK COVER	GOLD PLATED	H.S.G. MATERIAL	PART NUMBER
W/O	W/O	0.762um [30u"]	PBT	5-1734022-6
W/O	W/O		PBT	5-1734022-5
W/O	W/O		NY66	4-1734022-5
W/O	W/O		NY66	5-1734022-4
W/O	W/O	0.381um [15u"]	NY46	5-1734022-3
W/O	W/O		NY46	4-1734022-3
W/O	W/O		NY46	5-1734022-2
W/O	W/O		NY46	4-1734022-2
W/O	W/O	GOLD FLASH	PBT	3-1734022-6
W/O	W/O		PBT	2-1734022-6
W/O	W/O		NY66	3-1734022-4
W/O	W/O		NY66	2-1734022-4
W/O	W/O	NY46	NY46	3-1734022-1
W/O	W/O		NY46	2-1734022-1
W/O	W/O		NY46	1-1734022-6
W/O	W/O		NY46	1-1734022-5
W/O	W/O	NY46	PBT	1734022-6
W/O	W/O		PBT	1734022-5
W/O	W/O		NY66	1-1734022-3
W/O	W/O		NY66	1734022-4
W/O	W/O	NY46	NY46	1734022-3
W/O	W/O		NY46	1-1734022-2
W/O	W/O		NY46	1-1734022-1
W/O	W/O		NY46	1734022-2
W/O	W/O			1734022-1

THIS DRAWING IS A CONTROLLED DOCUMENT.

DIMENSIONS:	TOLERANCES UNLESS OTHERWISE SPECIFIED:	DWN F. YANG 03MAR2009	Tyco Electronics Corporation Tyco Electronics Corporation Taipei, Taiwan	
MM	0 PLC ±	CHK S. CHIEN 03MAR2009	NAME	
	1 PLC ±0.3	APVD W. KODAMA 03MAR2009	PRODUCT SPEC	
	2 PLC ±0.2		108-1586	
	3 PLC ±		QUALIFICATION TEST REPORT	
	4 PLC ±		WEIGHT	
	ANGLES ±°		SIZE CAGE CODE DRAWING NO RESTRICTED TO	
MATERIAL	FINISH		A3 00779 C-1734022	
SEE NOTE	SEE NOTE		CUSTOMER DRAWING SCALE SHEET 1 of 2 REV D	

4

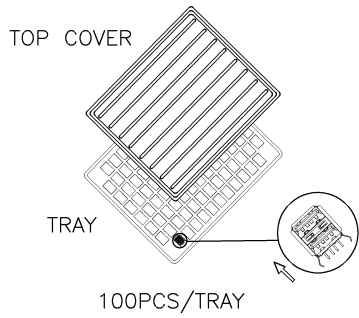
3

2

1

THIS DRAWING IS UNPUBLISHED. RELEASED FOR PUBLICATION AUG 2006
 © COPYRIGHT - BY TYCO ELECTRONICS CORPORATION. ALL RIGHTS RESERVED.

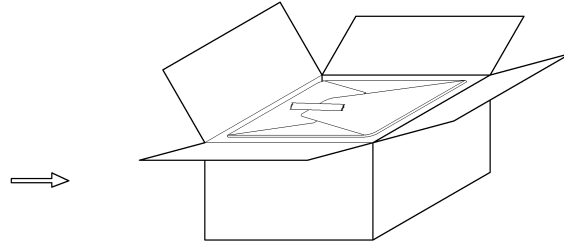
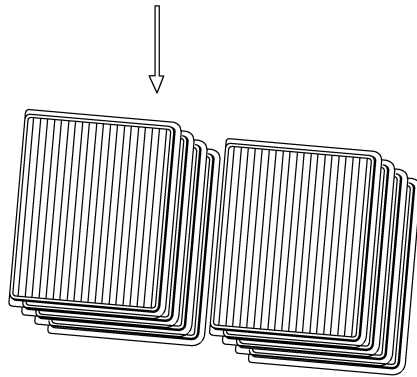
LDC		DIST		REVISIONS			
P	LTR	DESCRIPTION		DATE	DWN	APVD	
		SEE SHEET 1.					



NOTES:

1. MATERIAL:
TRAY: PS or PET
2. DIMENSION:
TRAY: L=270, W=230, H=21
SHIPPING CARTON: L=470, W=280, H=210
3. QUANTITY:
PRIMARY PACKING: 100 PCS/TRAY
SECONDARY PACKING: 20 TRAY/CARTON(2,000PCS)
4. WEIGHT:

BACK COVER	W/	W/O
NET WEIGHT	10.68 Kg	9.4 Kg
GROSS WEIGHT	12.18 Kg	10.9 Kg



20TRAY/CARTON

THIS DRAWING IS A CONTROLLED DOCUMENT.		DWN	Tyco Electronics Corporation Taipei, Taiwan															
DIMENSIONS: MM		CHK	NAME															
<table border="1"> <thead> <tr> <th colspan="2">TOLERANCES UNLESS OTHERWISE SPECIFIED:</th> </tr> </thead> <tbody> <tr> <td>0 PLC</td> <td>± -</td> </tr> <tr> <td>1 PLC</td> <td>± -</td> </tr> <tr> <td>2 PLC</td> <td>± -</td> </tr> <tr> <td>3 PLC</td> <td>± -</td> </tr> <tr> <td>4 PLC</td> <td>± -</td> </tr> <tr> <td>ANGLES</td> <td>± -</td> </tr> </tbody> </table>		TOLERANCES UNLESS OTHERWISE SPECIFIED:		0 PLC	± -	1 PLC	± -	2 PLC	± -	3 PLC	± -	4 PLC	± -	ANGLES	± -	APVD	PRODUCT SPEC	
TOLERANCES UNLESS OTHERWISE SPECIFIED:																		
0 PLC	± -																	
1 PLC	± -																	
2 PLC	± -																	
3 PLC	± -																	
4 PLC	± -																	
ANGLES	± -																	
		QUALIFICATION TEST REPORT																
MATERIAL	FINISH	WEIGHT	SIZE	CAGE CODE														
			A3	00779														
CUSTOMER DRAWING		DRAWING NO	DRAWING NO															
			C-1734022															
		SCALE	SHEET	REV														
			2 of 2	D														