

4

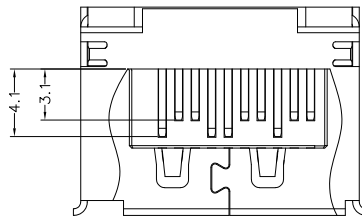
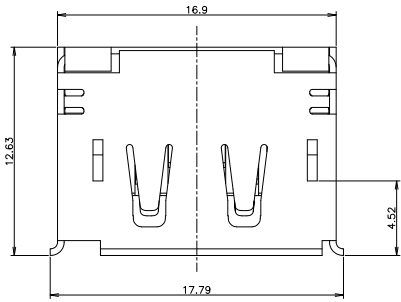
3

2

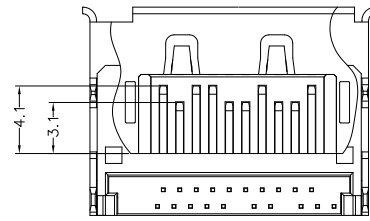
1

THIS DRAWING IS UNPUBLISHED. RELEASED FOR PUBLICATION JAN. 2008.
 © COPYRIGHT 2008 BY - ALL RIGHTS RESERVED.

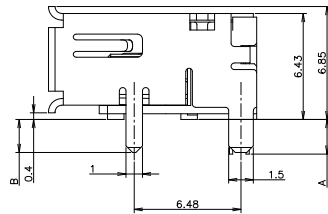
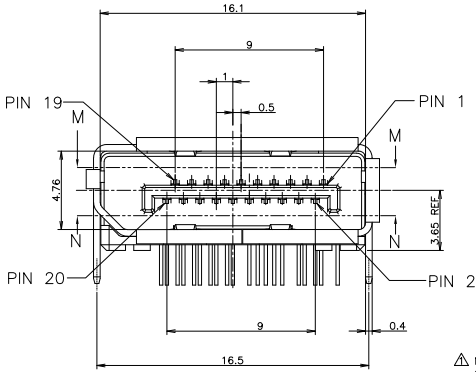
LOC	DIST	REV	REVISIONS	DATE	BY	APP'D
DW		F	LR			
		C1	REVISED PER ECO-11-005027	11MAR11	RK	HMR



© M-M



© N-N



- △ MATERIAL:
HOUSING: HIGH TEMPERATURE THERMAL PLASTIC, BLACK, UL94V-0.
CONTACT: COPPER ALLOY.
SHELL: COPPER ALLOY.
- △ FINISH:
CONTACT:
CONTACT AREA: GOLD PLATING (SEE TABLE)
SOLDER TAIL AREA: 2.54 MINIMUM MICRON MATTE TIN PLATING.
UNDER PLATING: 1.27 MINIMUM MICRON NICKEL PLATING OVERALL.
SHELL:
- ② 2.0 MINIMUM MICRON NICKEL UNDERPLATING ALL OVER
- ③ 3. LOW HALOGEN SPECIFICATION
CHLORINE(C) : 900 ppm MAX.
BROMINE(Br) : 900 ppm MAX.
CHLORINE(C) & BROMINE(Br) : 1500 ppm MAX.

DIM	DIM A	DIM B	Δ Au (MIN. um)	P/N	PACKING	
①	1.8	1.8	0.76	9-	-1	SEE SHEET 5
			GOLD FLASH	4-	-3	SEE SHEET 4
②	1.8	1.8	0.38	4-	-2	SEE SHEET 4
			GOLD FLASH	4-	-1	SEE SHEET 4
	2	2.1	0.76		-3	SEE SHEET 3
			GOLD FLASH		-2	SEE SHEET 3
			0.76	2040451-1		SEE SHEET 3

THIS DRAWING IS A CONTROLLED DOCUMENT.

DIM	Y. HIRATA	19MAR2008
CHK	T. KUSUHARA	19MAR2008
APP	T. KUSUHARA	19MAR2008
NAME	TE Connectivity	
PRODUCT SPEC	RECEPTACLE ASSEMBLY	
APPLICATION SPEC	DISPLAYPORT RA TH 2ROW TINE	
REVISIONS	08-78515	
SIZE	A2	00779
DATE	2040451	
CUSTOMER DRAWING	SCALE	6:1
	SHEET	1 of 5
	REV	C1

4

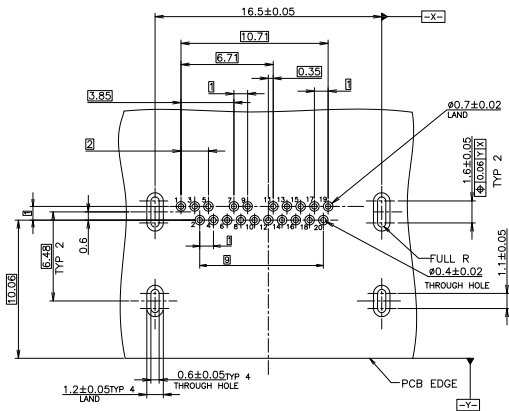
3

2

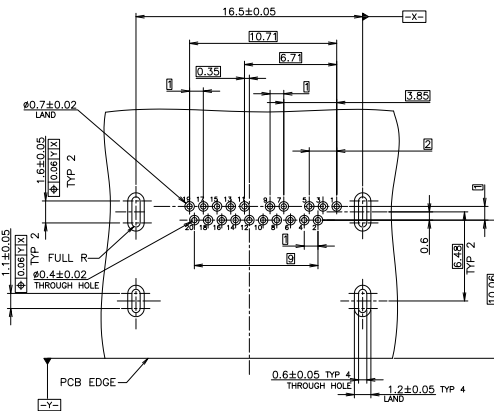
1

THIS DRAWING IS UNPUBLISHED. RELEASED FOR PUBLICATION JAN. 2008.
 ALL RIGHTS RESERVED.
 © COPYRIGHT 2008 BY -

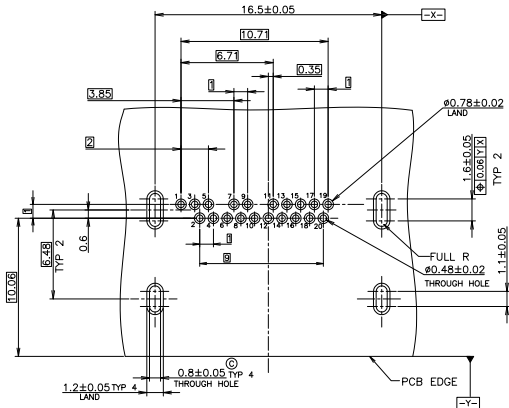
LOC	DIST	REVISIONS	DATE	BY	APPD
J		F LWR			
		SEE SHEET 1			



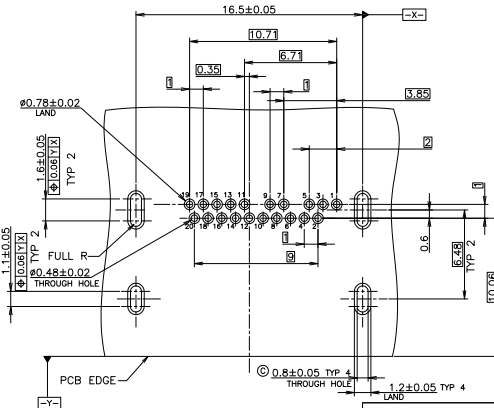
RECOMMENDED PCB LAYOUT (THICKNESS=1.6±0.1)
 BOTTOM VIEW
 (FOR 2040451-1 ~ -3)



RECOMMENDED PCB LAYOUT (THICKNESS=1.6±0.1)
 TOP VIEW
 (FOR 2040451-1 ~ -3)



RECOMMENDED PCB LAYOUT (THICKNESS=1.6±0.1)
 BOTTOM VIEW
 (FOR 4-2040451-1 ~ -3)
 (FOR 9-2040451-1)



RECOMMENDED PCB LAYOUT (THICKNESS=1.6±0.1)
 TOP VIEW
 (FOR 4-2040451-1 ~ -3)
 (FOR 9-2040451-1)

NOTE: THE DIFFERENCE IS THE LAND DIAMETER.

THIS DRAWING IS A CONTROLLED DOCUMENT.		OWN	TE Connectivity
DIMENSIONS ARE IN mm		APPC	RECEPTACLE ASSEMBLY
TOLERANCES UNLESS OTHERWISE SPECIFIED		NAME	DISPLAYPORT RA TH 2ROW TIME
0 P.L.C	± 0.3	PRODUCT SPEC	
1 P.L.C	± 0.3	APPLICATION SPEC	
2 P.L.C	± 0.3	REFERENCE	
3 P.L.C	± 0.3	SIZE	A2
4 P.L.C	± 0.3	CAGE CODE	00779
ANGLES	± 7	DRAWING NO	2040451
FINISH	± 7	RESTRICTED	
MATERIAL		WEIGHT	
CUSTOMER DRAWING		SCALE	1:1
		NTS	SHEET 2 of 5
		REV	C1

4

3

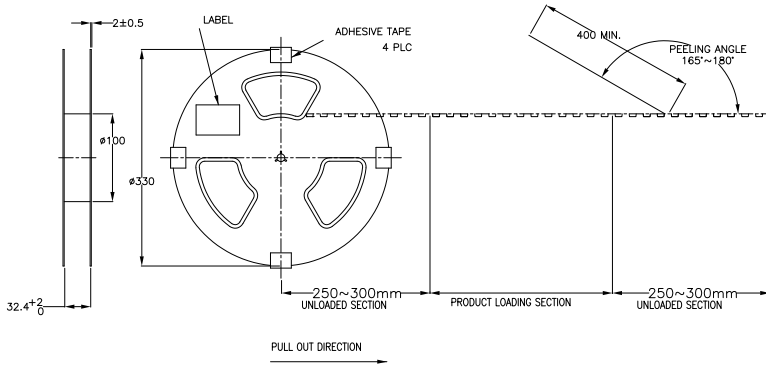
2

1

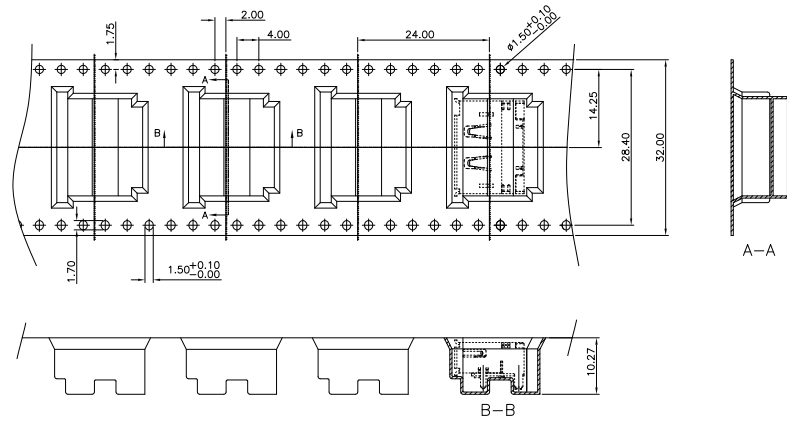
THIS DRAWING IS UNPUBLISHED. RELEASED FOR PUBLICATION JAN. 2008.
 © COPYRIGHT 2008 BY ALL RIGHTS RESERVED.

LOC	DIST	REVISIONS		
J	F	LR	DATE	OWN
		SEE SHEET 1	-	-

PACKING FOR 2040451-1 ~ -3



- 1 PRIMARY PACKING: 250PCS /REEL;
- 2 PEELING RESISTANCE: 0.1~0.7N (10.2gf~71.4gf).
- 3 PEELING SPEED: 300mm/minutes.
- 4 CARRIER TAPES, COVER TAPES, REELS AND TAPED COMPONENTS MUST MEET THE REQUIREMENTS DEFINED PER EIA-481-B.



THIS DRAWING IS A CONTROLLED DOCUMENT.		DWG CHK	TE Connectivity	
DIMENSIONS: 単位:mm		TOLERANCES UNLESS OTHERWISE SPECIFIED: 公差	RECEPTACLE ASSEMBLY DISPLAYPORT RA TH 2ROW TINE	
0 PLC ± 0.3		PRODUCT SPEC	RESTRICTED	
1 PLC ± 0.3		APPLICATION SPEC	SIZE: A2	
2 PLC ± 0.3		FINISH	CAGE CODE: 00779	
3 PLC ± 0.3		ANGLE	DRAWING NO: 2040451	
4 PLC ± 0.3		FINISH	SCALE: NTS	
MATERIAL		WEIGHT	SHEET 3 of 5	
CUSTOMER DRAWING		DATE	REV C1	

1471-9 (3/13)

2040451

A

4

3

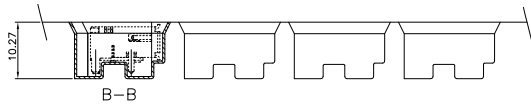
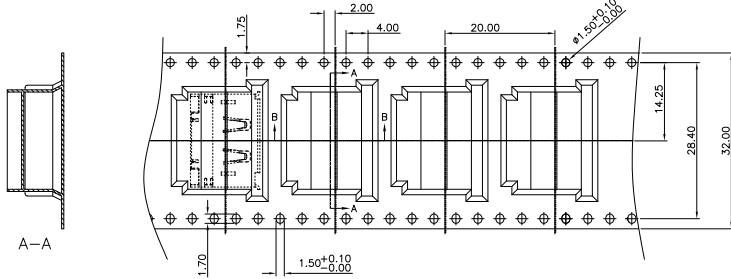
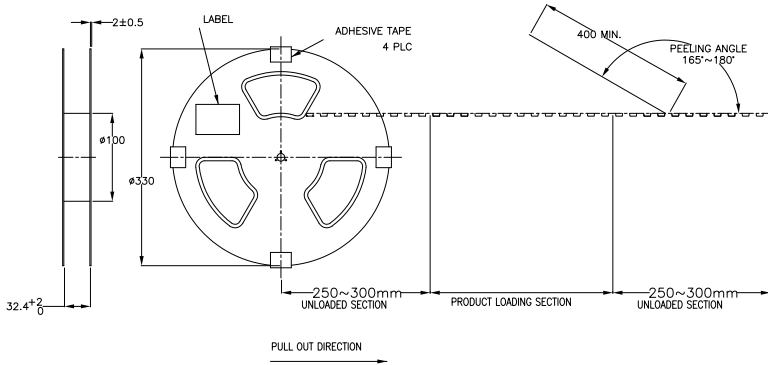
2

1

THIS DRAWING IS UNPUBLISHED. RELEASED FOR PUBLICATION JAN. 2008.
 ALL RIGHTS RESERVED.
 © COPYRIGHT 2008 By -

LOC	DIST	REVISIONS		
F	LNK	DESCRIPTION	DATE	BY
-	-	SEE SHEET 1	-	-

⊕PACKING FOR 4-2040451-1 ~ -3



- 1 PRIMARY PACKING: 250PCS /REEL;
- 2 PEELING RESISTANCE: 0.1~0.7N (10.2gf~71.4gf).
- 3 PEELING SPEED: 300mm/minutes.
- 4 CARRIER TAPES, COVER TAPES, REELS AND TAPED COMPONENTS MUST MEET THE REQUIREMENTS DEFINED PER EIA-481-B.

THIS DRAWING IS A CONTROLLED DOCUMENT.		DMN	TE Connectivity	
DIMENSIONS: 0.1mm		CHK	RECEPTACLE ASSEMBLY	
TOLERANCES UNLESS OTHERWISE SPECIFIED:		NAME	DISPLAYPORT RA TH 2ROW TIME	
0 PLC	± 0.3	PRODUCT SPEC	APPLICATION SPEC	
1 PLC	± 0.3	APPLICATION SPEC	SIZE	
2 PLC	± 0.3	APPLICATION SPEC	CASE CODE	
3 PLC	± 0.3	APPLICATION SPEC	DRAWING NO	
4 PLC	± 0.3	APPLICATION SPEC	WEIGHT	
ANGLES	± 0.3	APPLICATION SPEC	CUSTOMER DRAWING	
FINISH		DATE	SHEET	
			4 of 5	
			REV C1	

1471-9 (3/11)

2040451

A

4

3

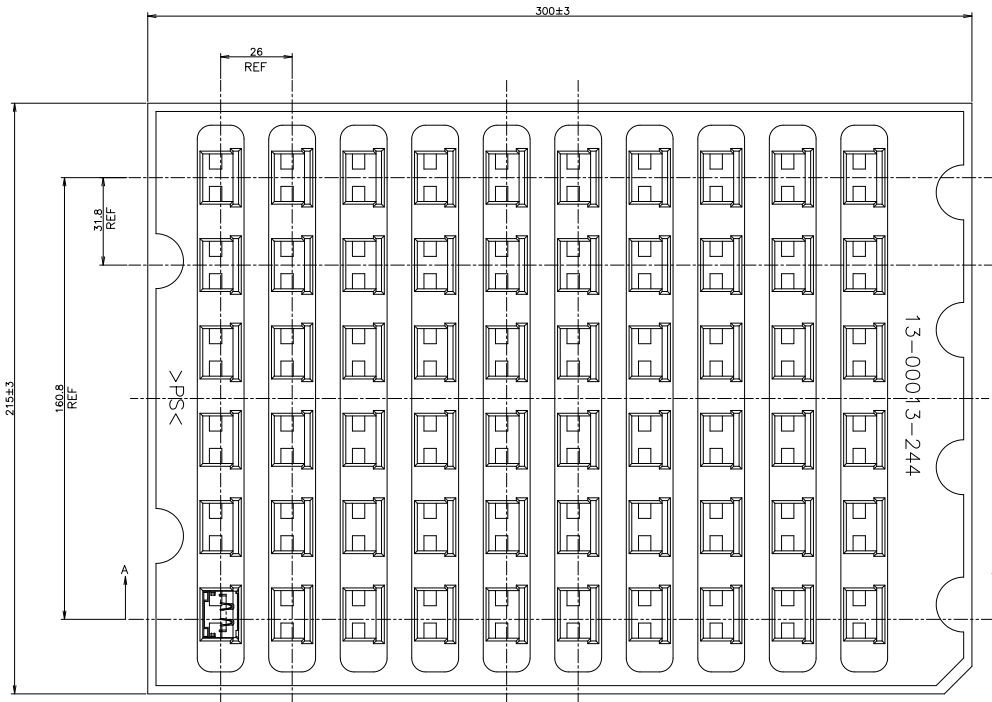
2

1

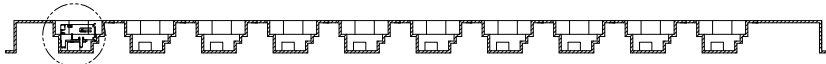
THIS DRAWING IS UNPUBLISHED. RELEASED FOR PUBLICATION JAN. 2008.
 © COPYRIGHT 2008 BY - ALL RIGHTS RESERVED.

LOC	DIST	REVISIONS		
F	LNK	DESCRIPTION	DATE	BY
-	-	SEE SHEET 1	-	-

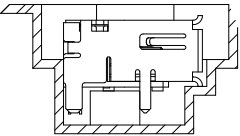
© PACKING FOR 9-2040451-1



11.75±1



SECTION A-A



NOTES:

1. PACKING MATERIAL TO BE MET TE CONNECTIVITY SPEC 230-702 .CADMIUM AND CADMIUM COMPOUNDS CONTENT: 50ppm UNDER(PLASTIC,RUBBER,INK,PINMENT,PAINT) .LEAD,CADMIUM,CHROM VI AND MERCURY CONTENT: 100ppm(COMBINED)UNDER.(IN PACKAGING MATERIAL)
2. MATERIAL: FS, WHITE; T=0.8mm.
3. 60 Pcs/ TRAY

THIS DRAWING IS A CONTROLLED DOCUMENT.		DRN	TE Connectivity	
DIMENSIONS: 0 PLG ± 0.3		CHK	RECEPTACLE ASSEMBLY	
1 PLG ± 0.3		APPC	DISPLAYPORT RA TH 2ROW TINE	
2 PLG ± 0.3		PRODUCT SPEC	RESTRICTED	
3 PLG ± 0.3		APPLICATION SPEC	SIZE	CAGE CODE
4 PLG ± 0.3		FINISH	A2	00779
ANGLES ± 0.2		WEIGHT	DRAWING NO	
MATERIAL		CUSTOMER DRAWING	C=2040451	
SCALE		SHEET		5 of 5
NTS		REV		C1