

2008/09/17 01:23:47 CAROL TRIBBLE

DRAWING FOR REFERENCE: This is subject to change without notice

| COUNT | DESCRIPTION OF REVISIONS | BY | CHKD | DATE | COUNT | DESCRIPTION OF REVISIONS | BY | CHKD | DATE |
|--|-----------------------------|--|----------------------------|------|--|--------------------------|-----------------------|---------------------------|----------|
| △ | | | | | △ | | | | |
| △ | | | | | △ | | | | |
| APPLICABLE STANDARD | | | | | | | | | |
| RATING | OPERATING TEMPERATURE RANGE | -30°C TO 75°C | | | STORAGE TEMPERATURE RANGE | -40°C TO 85°C | | | |
| | VOLTAGE | 5V AC | | | OPERATING HUMIDITY RANGE | -% TO -% | | | |
| | CURRENT | 1A | | | APPLICABLE CABLE | - | | | |
| SPECIFICATIONS | | | | | | | | | |
| ITEM | | TEST METHOD | | | REQUIREMENTS | | | QT | AT |
| CONSTRUCTION | | | | | | | | | |
| GENERAL EXAMINATION | | VISUALLY AND BY MEASURING INSTRUMENT. | | | ACCORDING TO DRAWING. | | | ○ | ○ |
| MARKING | | CONFIRMED VISUALLY. | | | | | | ○ | ○ |
| ELECTRIC CHARACTERISTICS | | | | | | | | | |
| CONTACT RESISTANCE | | 100 mA (DC OR 1000 Hz). | | | | | | ○ | ○ |
| CONTACT RESISTANCE MILLIVOLT LEVEL METHOD. | | 20 mV MAX, 100 mA(DC OR 1000 Hz). | | | 50 mΩ MAX. | | | ○ | - |
| INSULATION RESISTANCE | | 100 V DC | | | 100 MΩ MIN. | | | ○ | ○ |
| VOLTAGE PROOF | | 100 V AC FOR 1min. | | | NO FLASHOVER OR BREAKDOWN | | | ○ | ○ |
| CAPASITANCE | | MEASURE ADJACENT TWO CONTACTS AT 1000±10Hz AC VOLTAGE. | | | 2 pF MAX | | | ○ | - |
| MECHANICAL CHARACTERISTICS | | | | | | | | | |
| INSERTION AND WITHDRAWAL FORCES | | MEASURED BY APPLICABLE CONNECTOR. | | | INSERTION FORCE 35 N MAX. EXTRACTION FORCE 7 N MIN. | | | ○ | - |
| MECHANICAL OPERATION | | 5000 TIMES INSERTIONS AND EXTRACTIONS. | | | ① CONTACT RESISTANCE: 70 mΩ MAX. ② EXTRACTION FORCE 3 N MIN. ③ NO DAMAGE, CRACK AND LOOSENESS, OF PARTS. | | | ○ | - |
| VIBRATION | | FREQUENCY 10 TO 55 Hz, SINGLE AMPLITUDE 0.75 mm AT 2 h, FOR 3 DIRECTIONS. | | | ① NO ELECTRICAL DISCONTINUITY OF 1 μs. ② NO DAMAGE, CRACK AND LOOSENESS, OF PARTS. | | | ○ | - |
| RANDOM VIBRATION | | FREQUENCY 50 TO 2000 Hz, AT 15 min, FOR 3 DIRECTIONS. | | | | | | ○ | - |
| SHOCK | | 490 m/s ² DIRECTIONS OF PULSE 11 ms AT 3TIMES FOR 6 DIRECTION. HALF SINE WAVE. | | | | | | ○ | - |
| ENVIRONMENTAL CHARACTERISTICS | | | | | | | | | |
| THERMAL SHOCK | | TEMPERATURE -55→ 20~35→ 85→ 20~35 °C TIME 30 → 2~3 → 30 → 2~3 min UNDER 10 CYCLES, | | | ① CONTACT RESISTANCE: 70 mΩ MAX. ② NO DAMAGE, CRACK AND LOOSENESS, OF PARTS. | | | ○ | - |
| HUMIDITY LIFE | | TEMPERATURE -10~65 °C, HUMIDITY 90 TO 98 %, UNDER 7 CYCLES (168 h) | | | ① INSULATION RESISTANCE: 10 MΩ MIN.(AT DRY) ② NO DAMAGE, CRACK AND LOOSENESS, OF PARTS. | | | ○ | - |
| CORROSION SALT MIST | | EXPOSED IN 5% SALT WATER SPRAY FOR 48 h. (JIS C 5402) | | | ① CONTACT RESISTANCE: 70 mΩ MAX. NO DAMAGE, CRACK AND LOOSENESS, OF PARTS. | | | ○ | - |
| SOLDERABILITY | | SOLDERED AT TEMP.245°C FOR IN IMMERSION, DURATION, 2~3 S. | | | SOLDER SHALL COVER A MINIMUM OF 95% OF THE SURFACE BEING IMMersed. | | | ○ | - |
| REMARKS | | | | | DRAWN | DESIGNED | CHECKED | APPROVED | RELEASED |
| Unless otherwise specified, refer to USB2.0 EIA364. | | | | | H. Tanaka 03.9.9 | H. Tanaka 03.9.9 | M. Nakamura 03.9.9 | 03.9.9 | |
| Note QT:Qualification Test AT:Assurance Test ○:Applicable Test | | | | | | | | | |
| HRS HIROSE ELECTRIC CO., LTD. | | | | | SPECIFICATION SHEET | | | PART NO. UX60RA-MB-5ST | |
| CODE NO.(OLD) | | | DRAWING NO. ELC4-124218 | | CODE NO. CL240-0007-5 | | | 1/1 | |

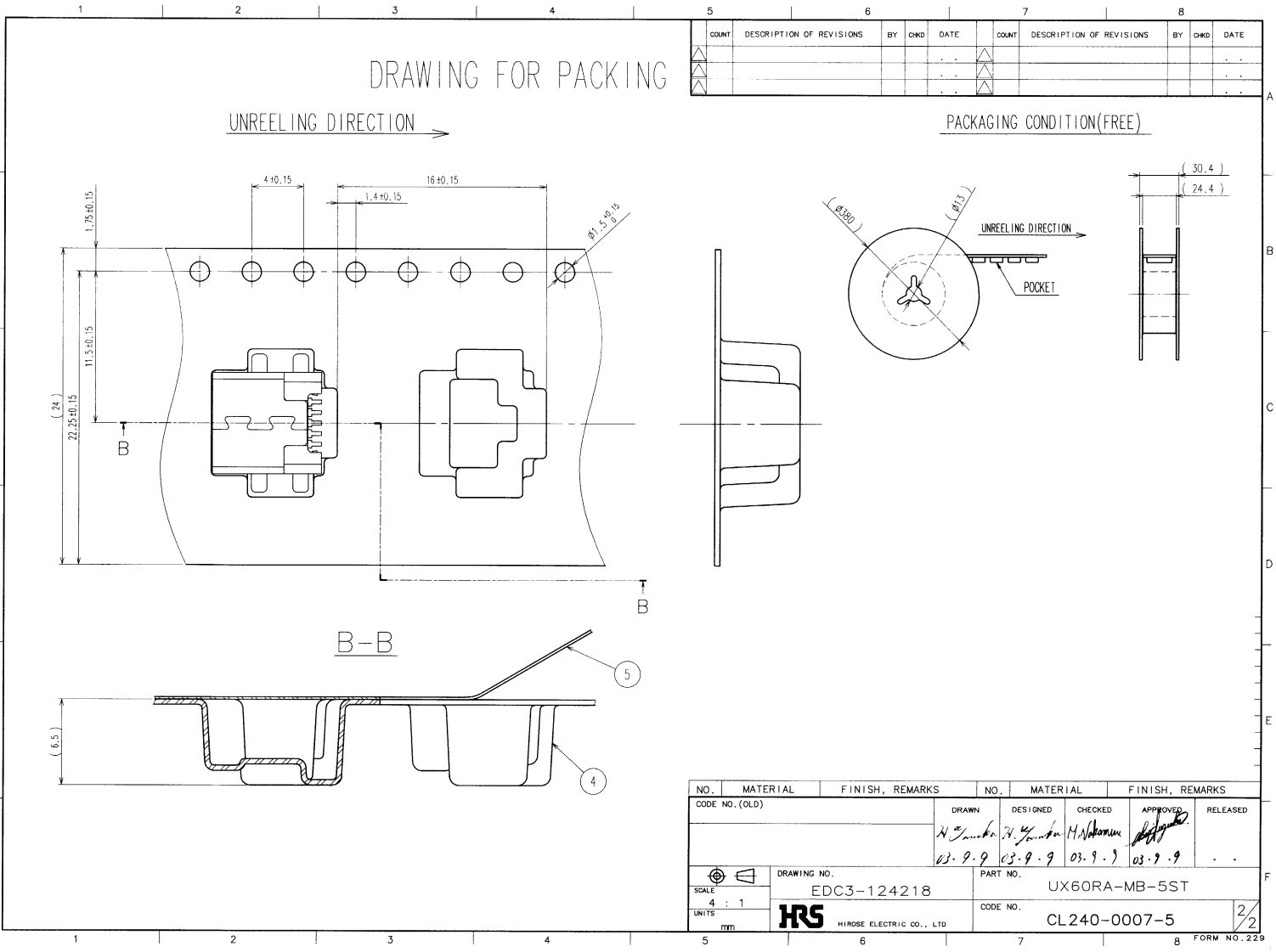
FORM No.231-1



2008/09/17 01:23:47 CAROL TRIBBLE

DRAWING FOR REFERENCE: This is subject to change without notice

| |
|----|
| TO |
| Q1 |
| |
| |



| COUNT | DESCRIPTION OF REVISIONS | BY | CHKD | DATE | COUNT | DESCRIPTION OF REVISIONS | BY | CHKD | DATE |
|-------|--------------------------|----|------|------|-------|--------------------------|----|------|------|
| | | | | | | | | | |
| | | | | | | | | | |

| NO. | MATERIAL | FINISH, REMARKS | NO. | MATERIAL | FINISH, REMARKS |
|-----|----------|-----------------|-----|----------|-----------------|
| | | | | | |
| | | | | | |

| | | | | | |
|----------------|------------------|---------------------|--------------------|--------------------|----------|
| CODE NO. (OLD) | DRAWN | DESIGNED | CHECKED | APPROVED | RELEASED |
| | <i>N. Sasaki</i> | <i>N. Y. Sasaki</i> | <i>M. Nakamura</i> | <i>[Signature]</i> | |
| | 03.9.9 | 03.9.9 | 03.9.9 | 03.9.9 | |

| | |
|-------------|---------------|
| DRAWING NO. | PART NO. |
| EDC3-124218 | UX60RA-MB-5ST |
| SCALE | UNITS |
| 4 : 1 | mm |

| | |
|--------------|-----|
| CODE NO. | |
| CL240-0007-5 | 2/2 |

FORM NO. 229