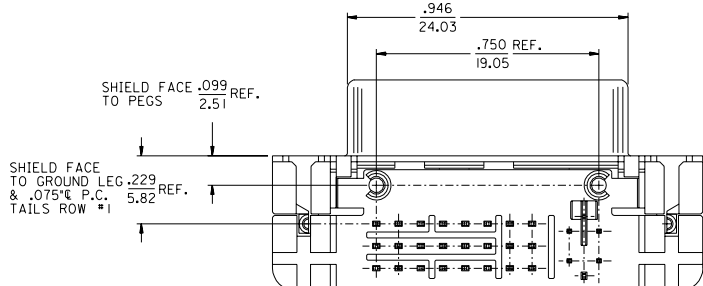
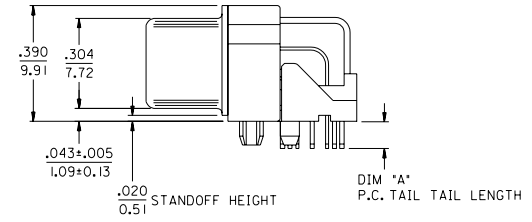
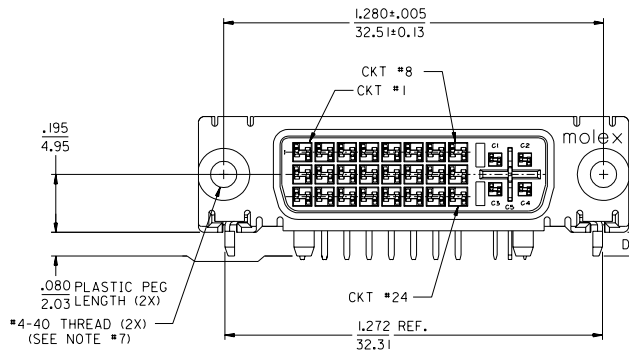


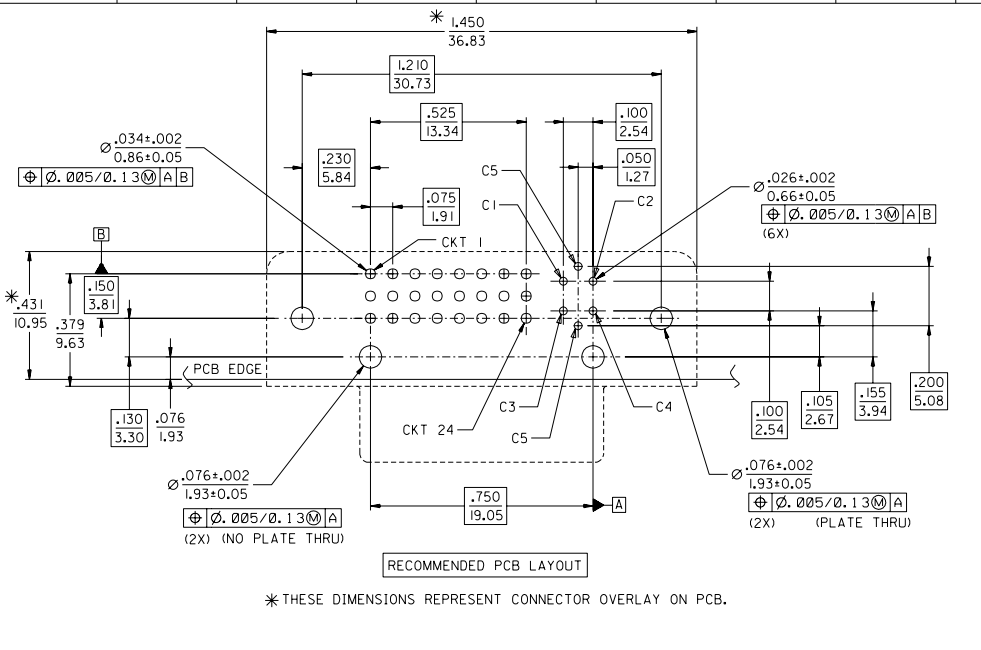
- NOTES:
- MATERIALS:  
SHIELD -- DEEP DRAW STEEL.  
HOUSING -- GLASS FILLED POLYMER, NATURAL (WHITE), UL 94v-0.  
TAIL ALIGNER -- GLASS FILLED POLYMER, NATURAL (WHITE), UL 94v-0.  
CONTACTS -- COPPER ALLOY.  
MICROCROSS GROUND -- COPPER ALLOY.
  - PLATING: SEE SHEET 2
  - PRODUCT CONFORMS TO MOLEX PRODUCT SPECIFICATION NUMBER PS-74320-001. REFER TO THIS SPECIFICATION FOR SPACING ON A P.C.B. OF TWO OR MORE CONNECTORS WHEN USING A CABLE OR AN ADAPTER ASSEMBLY.
  - SEE SHEET 2 FOR RECOMMENDED PANEL CUT-OUT AND P.C.B. LAYOUT.
  - PARTS WILL BE PACKAGED IN TRAYS PER PK-74320-010.
  - PRODUCT CONFORMS TO DDWG DVI SPECIFICATION. REFER TO THIS SPECIFICATION FOR CONNECTOR MATING DIMENSIONS.
  - RECOMMENDED MOUNTING HARDWARE IS MOLEX P/N 71781-0001 OR 82007-0300 OR 88780-6066.  
REFER TO PRODUCT SPECIFICATION NUMBER PS-74320-001 FOR THE APPLICATION TORQUE REQUIREMENT FOR ASSEMBLING MOUNTING HARDWARE.
- ⚠ CAVITY ID AND MANUFACTURING PLANT CODE.



PART NUMBER	PLATING OPTION	DIM "A"	DIM "B"
74320-1000	1	.092/2.34	.080±.020
74320-1001	1	.050/1.27	2.03±0.51
74320-1003	1	.123/3.12	.110/2.79
74320-1004	2	.092/2.34	.080±.020
74320-1005	2	.050/1.27	2.03±0.51
74320-1006	2	.110/2.79	.110/2.79
74320-1007	2	.123/3.12	.110/2.79

MODIFICATION EC NO. SH2004-0130 DRWG. DXLUE 04/03/04 CHK: HARVEY 04/03/11 APPR: SHUANG 04/03/12	QUALITY SYMBOLS MAJOR CRITICAL REV
---	---

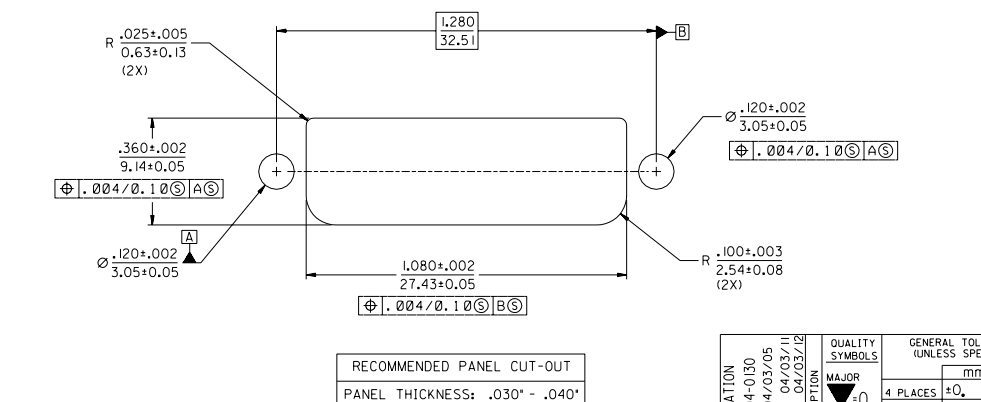
GENERAL TOLERANCES: (UNLESS SPECIFIED) mm    INCH 4 PLACES ±0.    ±. 3 PLACES ±0.    ±.010 2 PLACES ±0.25    ±.010 1 PLACE ±0.25    ±.010 ANGULAR: ± 1/2°	SCALE 4 : 1 DESIGN UNITS mm    INCH DRAWN BY & DATE MOSULLIV 99/02/12 CHECKED BY & DATE MOSULLIV 99/02/12 APPROVED BY & DATE NELLIGAN 99/02/15	DIMENSIONS: mm    INCH THIRD ANGLE PROJECTION TITLE: DVI - INTERGRATED RIGHT ANGLE RECEPTACLE CONNECTOR MOLEX INCORPORATED MATERIAL NO. SEE CHART DRAWING NO. SD-74320-001 SHEET NO. 1 OF 2 SIZE C
--	--	--



**PLATING OPTIONS:**

**PLATING OPTION #1:**  
 OUTER SHIELD -- 150u"/(3.75um) MIN. BRIGHT TIN OVER  
 50u"/(1.27um) MIN. NICKEL OVER COPPER FLASH.  
 .075"/(1.91mm) CONTACTS -- 30u"/(0.75um) MIN. SELECT GOLD AND  
 100u"/(2.50um) MIN. SELECT PURE TIN  
 OVER 50u"/(1.27um) MIN. NICKEL OVERALL.  
 .100"/(2.54mm) CONTACTS -- 30u"/(0.75um) MIN. SELECT GOLD AND  
 100u"/(2.50um) MIN. SELECT PURE TIN.  
 OVER 50u"/(1.27um) MIN. NICKEL OVERALL.  
 MICROCROSS GROUND -- 30u"/(0.75um) MIN. SELECT GOLD AND  
 100u"/(2.50um) MIN. SELECT PURE TIN.  
 OVER 50u"/(1.27um) MIN. NICKEL OVERALL.

**PLATING OPTION #2:**  
 OUTER SHIELD -- 150u"/(3.75um) MIN. BRIGHT TIN OVER  
 50u"/(1.27um) MIN. NICKEL OVER COPPER FLASH.  
 .075"/(1.91mm) CONTACTS -- SELECT GOLD FLASH AND  
 100u"/(2.50um) MIN. SELECT PURE TIN  
 OVER 50u"/(1.27um) MIN. NICKEL OVERALL.  
 .100"/(2.54mm) CONTACTS -- SELECT GOLD FLASH AND  
 100u"/(2.50um) MIN. SELECT PURE TIN  
 OVER 50u"/(1.27um) MIN. NICKEL OVERALL.  
 MICROCROSS GROUND -- 30u"/(0.75um) MIN. SELECT GOLD AND  
 100u"/(2.50um) MIN. SELECT PURE TIN  
 OVER 50u"/(1.27um) MIN. NICKEL OVERALL.



MODIFICATION EC NO. SH2004-0130 DRAWN/DXLE 04/03/05 CHK: HARVEY 04/03/11 APPR: SHUANG 04/03/12	QUALITY SYMBOLS	GENERAL TOLERANCES: (UNLESS SPECIFIED)	SCALE 4 : 1	DESIGN UNITS <input type="checkbox"/> mm <input checked="" type="checkbox"/> INCH	THIRD ANGLE PROJECTION	DIMENSIONS: <input type="checkbox"/> mm <input checked="" type="checkbox"/> INCH <input type="checkbox"/> mm ONLY <input type="checkbox"/> INCH ONLY	SHT REV
	MAJOR -0	4 PLACES ±0.010	mm	INCH	TITLE: DVI - INTERGRATED RIGHT ANGLE RECEPTACLE CONNECTOR	MATERIAL NO. SEE CHART	DRAWING NO. SD-74320-001
	CRITICAL 0	3 PLACES ±0.025	±.010	±.010			
	REV	2 PLACES ±0.25	±.010	ANGULAR: ± 1/2°	APPROVED BY & DATE NELLIGAN 99/02/15	MATERIAL NO. DRAWING NO. SHEET NO. SEE CHART SD-74320-001 2	
	1 PLACE ±0.25	±.010	DRAFT WHERE APPLICABLE MUST REMAIN WITHIN DIMENSIONS		THIS DRAWING CONTAINS INFORMATION THAT IS PROPRIETARY TO MOLEX INCORPORATED AND SHOULD NOT BE USED WITHOUT WRITTEN PERMISSION.		