

注記

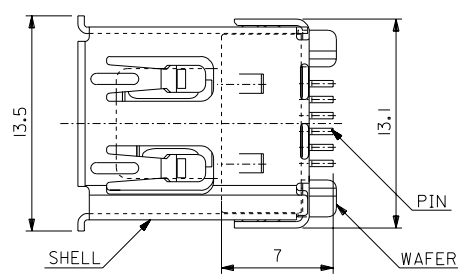
1. 一般公差: ±0.5
GENERAL TOLERANCES: ±0.5
 2. 各部の反りは2.0MAX.
WARP 2.0MAX.
 3. 梱包数: 150個
PACKAGING QUANTITY: 150PCS.
- △ トレイ中の製品の向きは(a)又は(b)とし、かつ同一トレイ中の製品の向きはどちらか一方で統一
PRODUCT DIRECTION SHOULD BE (a) OR (b). ALL PRODUCTS MUST FACED THE SAME DIRECTION IN THE TRAY.

53462-0629
適用製品番号
APPLICABLE PART No.

RELEASED EC NO: J2008-3804 DRWN: Y. TOKUZONO 2008/05/01 CHKD: T. HARUYAMA 2008/05/01 APPR: N. UKITA 2008/05/01 REV. DESCRIPTION	GENERAL TOLERANCES (UNLESS SPECIFIED)		DIMENSION STYLE MM ONLY	SCALE 1:2	DESIGN UNITS METRIC	THIRD ANGLE PROJECTION	
	10 UNDER ± ---	30 UNDER ± ---	DRAWN BY Y. TOKUZONO	DATE 2008/4/28	TITLE TRAY FOR 53462 (2.0 I/O FLAT SMT WAFER ASS'Y)		
	10 OVER ± ---	30 OVER ± ---	CHECKED BY T. HARUYAMA	DATE 2008/4/28	MOLEX INCORPORATED		
	ANGULAR ± --- °		APPROVED BY N. UKITA	DATE 2008/4/28	MATERIAL NO. 098910030	DOCUMENT NO. SD-53462-001	SHEET NO. 1 OF 1
DRAFT WHERE APPLICABLE MUST REMAIN WITHIN DIMENSIONS			THIS DRAWING CONTAINS INFORMATION THAT IS PROPRIETARY TO MOLEX INCORPORATED AND SHOULD NOT BE USED WITHOUT WRITTEN PERMISSION				

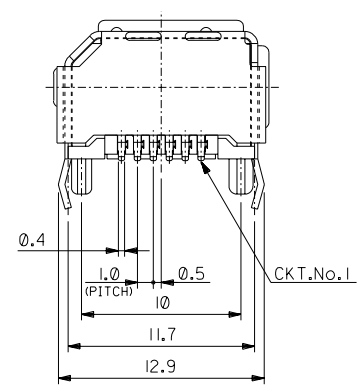
DWG. NO. SD-53462-010

1:MM DIMENSIONS IN METRIC DO NOT SCALE DRAWING



部品名 PARTS NAME	材質 MATERIAL	注記 NOTES
ウエハー WAFER	ガラス入り46ナイロン NYLON46 G.F.	G.F.30%, UL94V-0, 色:黒 G.F.30%, UL94V-0, COLOR: BLACK
ピン PIN	黄銅 t0.25 BRASS t0.25	接点部: 金メッキ0.76 μmMIN. CONTACT AREA: GOLD 0.76 MICROMETER MIN. 半田付け部: 錫メッキ1.0 μmMIN. SOLDER TAIL AREA: TIN 1.0 MICROMETER MIN. 下地メッキ: ニッケルメッキ2.0 μmMIN. UNDER-PLATING: NICKEL 2.0 MICROMETER MIN.
シェル SHELL	りん青銅 t0.4 PHOSPHOR BRONZE t0.4	錫メッキ: 1.0 μmMIN. TIN: 1.0 MICROMETER MIN. 下地メッキ: ニッケルメッキ1.27 μmMIN. UNDER-PLATING: NICKEL 1.27 MICROMETER MIN.

本製品は53462-**-21の鉛フリー品である。
THIS PRODUCT IS LEAD FREE OF 53462-**-21.



53462-0629	6
MATERIAL NO.	CIRCUIT
MODEL NO.	53462-**-29

molex MOLEX-JAPAN CO.,LTD.
日本モレックス株式会社

REVISE ONLY ON CAD SYSTEM

TITLE 名称
2.0 I/O CONN. SOCKET
RIGHT-ANGLE FLAT
WITH KINK -LEAD FREE-

DWG. NO.	SD-53462-010	REV	0
----------	--------------	-----	---

角度 ANGLE	公差 TOL.	材料 MATERIAL	仕上げ FINISH	適用電線範囲 WIRE RANGE	被覆外径 INS. RANGE
30°以上 OVER	+0.3	表参照 SEE TABLE	表参照 SEE TABLE	—	—
10°以上 30°未満 UNDER	+0.25				
10°未満 UNDER	+0.2				

THIS DRAWING CONTAINS INFORMATION THAT IS PROPRIETARY TO MOLEX/JAPAN AND SHOULD NOT BE USED WITHOUT WRITTEN PERMISSION
本図面は日本モレックス(株)の所有する情報を含むもので、当社の許可なく複製を禁止する。
EN-01C(032)MXJ-32